

# Converting Colors

Hex(A7896C)

Have a look what the booklet for  
Hex(A7896C) contains.

<b>Hex(A7896C)</b> .....	3
<b><i>Conversions</i></b> .....	4
<b><i>Details</i></b> .....	6
<b><i>Harmonies</i></b> .....	11
<b><i>Previews</i></b> .....	23
<b><i>Color Blindness Simulation</i></b> .....	26
<b><i>CSS Examples</i></b> .....	29

**Color**

**Hex(A7896C)**

# Conversions

## Conversions Part 1

<b>Format</b>	<b>Color</b>
Hex	A7896C
RGB	167, 137, 108
RGB Percent	65%, 54%, 42%
CMY	0.3451, 0.4627, 0.5765
CMYK	0.00, 0.18, 0.35, 0.35
HSL	29°, 25%, 54%
HSV	29°, 35%, 65%
XYZ	27.5888, 27.1895, 17.9814
YIQ	142.6640, 27.1890, -2.6590

# Conversions

## Conversions Part 2

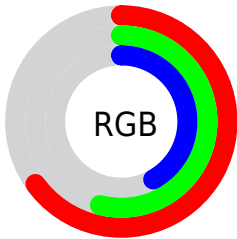
<b>Format</b>	<b>Color</b>
<a href="#">RYB</a>	<a href="#">167, 165, 108</a>
Decimal	<a href="#">10979692</a>
CIELab	<a href="#">59.15, 7.14, 19.84</a>
CIElCh	<a href="#">59, 21.084, 70.216</a>
Yxy	<a href="#">27.1895, 0.3792, 0.3737</a>
Android (android.graphics.Color)	<a href="#">4289169772</a> ( <a href="#">0xFFA7896C</a> )
YUV	<a href="#">142.6640, -17.0894, 21.3427</a>
Hunter-Lab	<a href="#">52.1436, 3.1918, 16.0547</a>

# Details

The Hex color **A7896C** is a dark color, and the websafe version is hex **999966**. A complement of this color would be **6C8AA7**, and the grayscale version is **8F8F8F**.

A 20% lighter version of the original color is **DFBEA0**, and **72573C** is the 20% darker color. If you saturate the color by 10%, you get **A7815B**, and if you desaturate by 10%, it is **A7917D**.

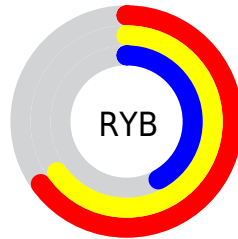
# Distribution



Red (65%)

Green (54%)

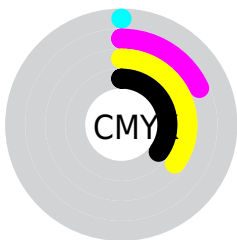
Blue (42%)



Red (65%)

Yellow (65%)

Blue (42%)

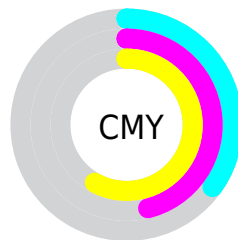


Cyan (0%)

Magenta (18%)

Yellow (35%)

Black (35%)



Cyan (35%)

Magenta (46%)

Yellow (58%)

# Brightness & Saturation Gradients

These gradients show how the Hex color A7896C changes by changing the brightness by 10 percent. The first figure shows a shift by +10% for each color and the second figure -10%.

Similar to the brightness gradients but the following saturation gradients show a change of the Hex color A7896C by changing the saturation by 10% instead.



 A7896C

 A7896C

FFFFFF

 8C7054

 DFBEA0

 72573C

 FCDABB

 584026

 FFF7D6

 402A11

 FFFFF3

 291500

 090000

 000000

 A7896C

 A7896C

 A7815B

 A7917D

 A7784B

 A79A8D

 A7703A

 A7A29E

 A76729

 A7ABAF

 A75F18

 A7B3BF

 A75608

 A7BCD0

 A75200

 A7C4E1

 A7CDF2

 A7D5FF

# Harmonies

## Analogous

The Analogous color harmony consists of three colors that are next to each other on the color wheel.



B28477



A7896C



968F6A

# Triad

The Triadic color harmony groups three colors that are evenly spaced from another and form a triangle on the color wheel.



A7896C



5C9994



9987AB

# Complementary

The Complementary color scheme is a pair of colors which are on the opposite of each other on the color wheel.



A7896C



6C8AA7

# Split Complementary

Split-complementary colors differ from the complementary color scheme. The scheme consists of three colors, the original color and two neighbors of the complement color.



818EB3



A7896C



5A97A6

# Square

The Square scheme is like the rectangle color scheme, but the four colors are evenly spaced on the color wheel.



A7896C



6C9881



6894B1



AB839B

# Rectangle

The Rectangle color scheme consists of four colors that form a rectangle on the color wheel.



A7896C



88936E



6894B1



928AAE



# Sweetspot

The Sweet Spot groups the original color and five complimentary colors.



A7896C



D9CDC1



A76C8A



6E665F



EDEDED



6E6E6E



# Same Dimension

The Same Dimension uses a secret algorithm to generate beautiful new colors.



A7896C



D9AA7E



A7A66C



54504C



944900



140A00



# Inverse Universe

The Inverse Universe completely reimagines the original color for something new.



6C8AA7



7EACD9



6C6DA7



4C5054



004B94

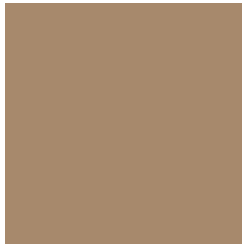


000A14



# Previews

## White Background



This preview shows how the Hex color A7896C looks on a white background.

## Color Contrast Check

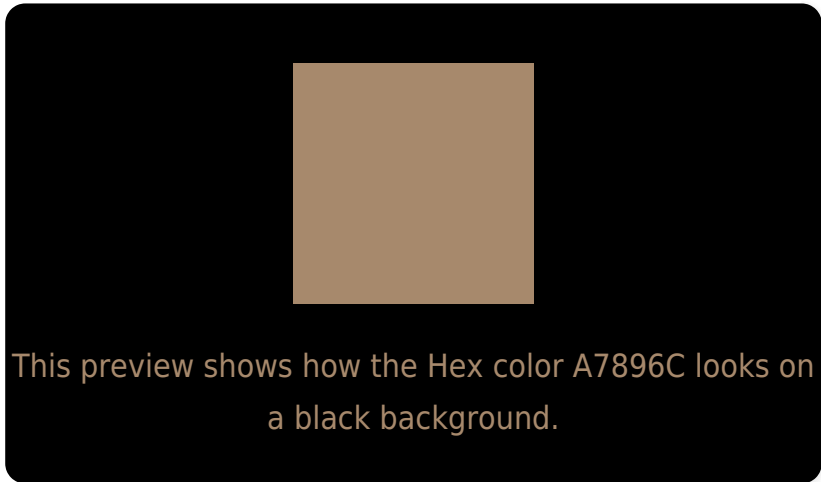
Large Text (above 18pt) WCAG AA ✓ Pass

Any Text WCAG AA × Fail

Large Text (above 18pt) WCAG AAA × Fail

Any Text WCAG AAA × Fail

# Black Background



## Color Contrast Check

Large Text (above 18pt) WCAG AA ✓ Pass

Any Text WCAG AA ✓ Pass

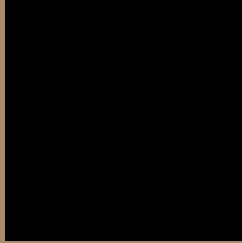
Large Text (above 18pt) WCAG AAA ✓ Pass

Any Text WCAG AAA × Fail

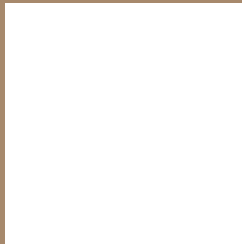
If you want to check with other color combinations, try the [Color Contrast Checker](#).



## Hex A7896C Background



This preview shows how black text looks on a background with the Hex color A7896C.



This preview shows how white text looks on a background with the Hex color A7896C.

# Color Blindness Simulation

Color vision deficiency is a very complex topic, and I could not describe the different causes any better than Wikipedia does, so if you want to learn more, you should check out their [article about color blindness](#).


## Dichromacy



**Original Color**  
A7896C

**Protanopia**  
988E6E

**Deuteranopia**  
A8896C



**Tritanopia**  
AB848F

# Trichromacy



**Original Color**  
A7896C

**Protanomaly**  
9D8C6D

**Deuteranomaly**  
A8896C

**Tritanomaly**  
AA8682

# Monochromacy



**Original Color**  
A7896C

**Achromatopsia**  
8F8F8F

**Achromatomaly**  
988D82

# CSS Examples

## Text

The CSS property to change the color of the text to Hex A7896C is called "color". The color property can be set on classes, ids or directly on the HTML element.

This example shows how text in the color #A7896C looks like.

```
.text, #text, p{  
    color:#A7896C  
}
```

If you want to add a text shadow in that color use the text-shadow property, you can generate a text shadow directly with our [CSS Text Shadow Generator](#).

Here you see how black text with a 4 pixel #A7896C colored shadow looks like.

```
.shadow{ text-shadow: 4px 4px 2px #A7896C
}
```

## Border

The CSS property to change the border of an element to Hex A7896C is called "border". The border property can be set on classes, ids or directly on the HTML element.

This example shows the color as border, it can be applied via the CSS property "border" or "border-color".

```
.border, #border, table{ border:4px solid
#A7896C }
```

If only the border color should be changed use the property `border-color`.

```
.border{ border-color:#A7896C }
```

If you want to add a box shadow in that color use:

Here you see how a box with a 4 pixel #A7896C colored shadow looks like.

```
.boxshadow{ -moz-box-shadow:4px 4px 4px  
4px #A7896C; -webkit-box-shadow:4px 4px  
4px 4px #A7896C; box-shadow:4px 4px 4px  
4px #A7896C }
```

# Background

The CSS property to change the background color of an element to Hex A7896C is called "background". The background property can be set on classes, ids or directly on the HTML element.

```
.background, #background, body{  
background:#A7896C }
```

If only the background color should be changed can be used:

```
.background{ background-color:#A7896C }
```

This example shows the color as background, it is applied via the CSS property "background".

To optimize and compress your CSS code, you can use our [online CSS compressor and optimizer](#) based on csstidy. If you want to create a linear or radial gradient as background or border, check our [CSS Gradient Generator](#).



Hey! You found this booklet interesting? Support Converting Colors with the new Membership Option!

The pro membership hides all ads, plus gives you double the colors in the color bucket, and more awesome pro features!

**[Learn more, Memberships starting at \\$2.50/m!](#)**

**Follow me  
on Twitter!**

@ConvertingColor