

Converting Colors

Hex(A84751)

Have a look what the booklet for
Hex(A84751) contains.

Hex(A84751)	3
<i>Conversions</i>	4
<i>Details</i>	6
<i>Harmonies</i>	11
<i>Previews</i>	23
<i>Color Blindness Simulation</i>	26
<i>CSS Examples</i>	29

Color

Hex(A84751)

Conversions

Conversions Part 1

Format	Color
Hex	A84751
RGB	168, 71, 81
RGB Percent	66%, 28%, 32%
CMY	0.3412, 0.7216, 0.6824
CMYK	0.00, 0.58, 0.52, 0.34
HSL	354°, 41%, 47%
HSV	354°, 58%, 66%
XYZ	19.8869, 13.4254, 9.3278
YIQ	101.1430, 54.6020, 23.6740

Conversions

Conversions Part 2

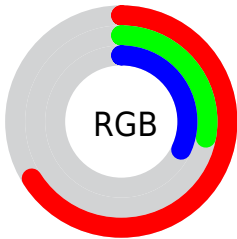
Format	Color
R_{YB}	168, 71, 81
Decimal	11028305
CIE _{Lab}	43.40, 40.81, 14.24
CIE _{LCh}	43, 43.224, 19.239
Yxy	13.4254, 0.4664, 0.3149
Android (android.graphics.Color)	4289218385 (0xFFA84751)
YUV	101.1430, -9.9305, 58.6336
Hunter-Lab	36.6407, 32.7605, 10.5547

Details

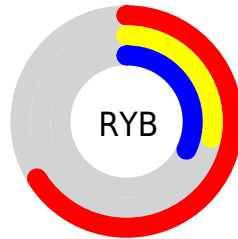
The Hex color **A84751** is a dark color, and the websafe version is hex **993333**. A complement of this color would be **47A89E**, and the grayscale version is **656565**.

A 20% lighter version of the original color is **E37B82**, and **6F1125** is the 20% darker color. If you saturate the color by 10%, you get **A83642**, and if you desaturate by 10%, it is **A85860**.

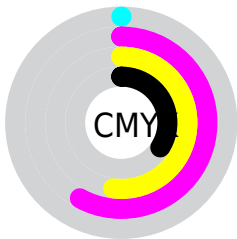
Distribution



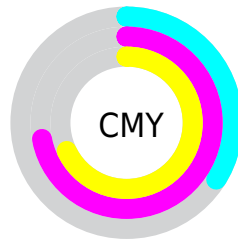
- Red (66%)
- Green (28%)
- Blue (32%)



- Red (66%)
- Yellow (28%)
- Blue (32%)



- Cyan (0%)
- Magenta (58%)
- Yellow (52%)
- Black (34%)



- Cyan (34%)
- Magenta (72%)
- Yellow (68%)

Brightness & Saturation Gradients

These gradients show how the Hex color A84751 changes by changing the brightness by 10 percent. The first figure shows a shift by +10% for each color and the second figure -10%.

Similar to the brightness gradients but the following saturation gradients show a change of the Hex color A84751 by changing the saturation by 10% instead.

 A84751

 A84751

FFFFFF

 8B2D3A

 E37B82

 6F1125

 FF969C

 540010

 FFB1B7

 3A0000

 FFCDD3

 190001

 FFEAEF

 000000

 A84751

 A84751

 A83642

 A85860

 A82533

 A8696F

 A81524

 A8797E

 A80415

 A88A8D

 A80011

 A89B9C

 A8ACAB

 A8BDBA

 A8CDCA

 A8DED9

Harmonies

Analogous

The Analogous color harmony consists of three colors that are next to each other on the color wheel.



A14775



A84751



9D5231

Triad

The Triadic color harmony groups three colors that are evenly spaced from another and form a triangle on the color wheel.



A84751



387335



006EAD

Complementary

The Complementary color scheme is a pair of colors which are on the opposite of each other on the color wheel.



A84751



47A89E

Split Complementary

Split-complementary colors differ from the complementary color scheme. The scheme consists of three colors, the original color and two neighbors of the complement color.



00759C



A84751



007758

Square

The Square scheme is like the rectangle color scheme, but the four colors are evenly spaced on the color wheel.



A84751



636C1D



00787D



5062AA

Rectangle

The Rectangle color scheme consists of four colors that form a rectangle on the color wheel.



A84751



8E5C21



00787D



0071A9

Sweetspot

The Sweet Spot groups the original color and five complimentary colors.



A84751



DBB6BA



9D47A8



6E585A



EDEDED



6E6E6E

Same Dimension

The Same Dimension uses a secret algorithm to generate beautiful new colors.



A84751



DB4454



A86C47



544C4D



94000F



140002

Inverse Universe

The Inverse Universe completely reimagines the original color for something new.



A84751



DB4454



4783A8



544C4D



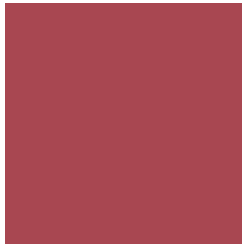
94000F



140002

Previews

White Background



This preview shows how the Hex color A84751 looks on a white background.

Color Contrast Check

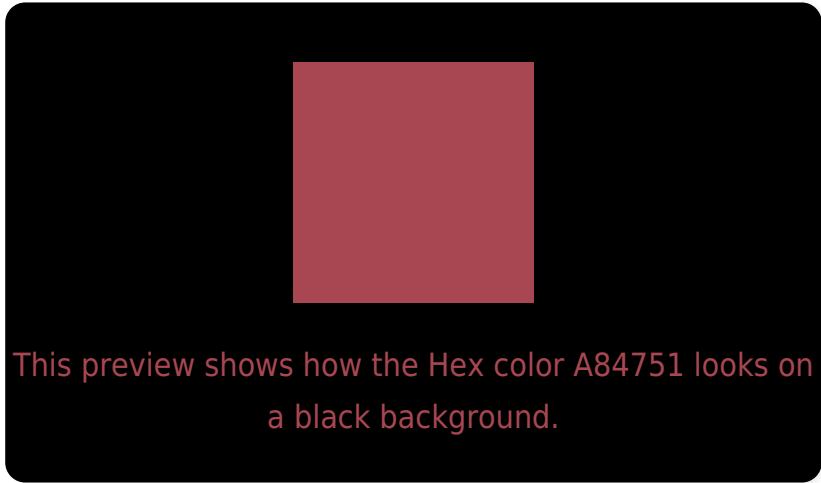
Large Text (above 18pt) WCAG AA ✓ Pass

Any Text WCAG AA ✓ Pass

Large Text (above 18pt) WCAG AAA ✓ Pass

Any Text WCAG AAA × Fail

Black Background



Color Contrast Check

Large Text (above 18pt) WCAG AA ✓ Pass

Any Text WCAG AA × Fail

Large Text (above 18pt) WCAG AAA × Fail

Any Text WCAG AAA × Fail

If you want to check with other color combinations, try the [Color Contrast Checker](#).

Hex A84751 Background



This preview shows how black text looks on a background with the Hex color A84751.

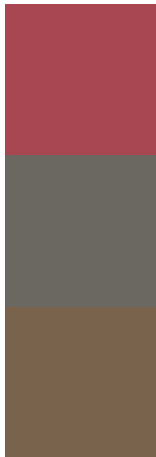


This preview shows how white text looks on a background with the Hex color A84751.

Color Blindness Simulation

Color vision deficiency is a very complex topic, and I could not describe the different causes any better than Wikipedia does, so if you want to learn more, you should check out their [article about color blindness](#).


Dichromacy



Original Color
A84751

Protanopia
6B6761

Deuteranopia
7A634D



Tritanopia
A8484D

Trichromacy



Monochromacy



CSS Examples

Text

The CSS property to change the color of the text to Hex A84751 is called "color". The color property can be set on classes, ids or directly on the HTML element.

This example shows how text in the color #A84751 looks like.

```
.text, #text, p{  
    color:#A84751  
}
```

If you want to add a text shadow in that color use the text-shadow property, you can generate a text shadow directly with our [CSS Text Shadow Generator](#).

Here you see how black text with a 4 pixel #A84751 colored shadow looks like.

```
.shadow{ text-shadow: 4px 4px 2px #A84751
}
```

Border

The CSS property to change the border of an element to Hex A84751 is called "border". The border property can be set on classes, ids or directly on the HTML element.

This example shows the color as border, it can be applied via the CSS property "border" or "border-color".

```
.border, #border, table{ border:4px solid
#A84751 }
```

If only the border color should be changed use the property border-color.

```
.border{ border-color:#A84751 }
```

If you want to add a box shadow in that color use:

Here you see how a box with a 4 pixel #A84751 colored shadow looks like.

```
.boxshadow{ -moz-box-shadow:4px 4px 4px  
4px #A84751; -webkit-box-shadow:4px 4px  
4px 4px #A84751; box-shadow:4px 4px 4px  
4px #A84751 }
```

Background

The CSS property to change the background color of an element to Hex A84751 is called "background". The background property can be set on classes, ids or directly on the HTML element.

```
.background, #background, body{  
background:#A84751 }
```

If only the background color should be changed can be used:

```
.background{ background-color:#A84751 }
```

This example shows the color as background, it is applied via the CSS property "background".

To optimize and compress your CSS code, you can use our [online CSS compressor and optimizer](#) based on csstidy. If you want to create a linear or radial gradient as background or border, check our [CSS Gradient Generator](#).

Hey! You found this booklet interesting? Support Converting Colors with the new Membership Option!

The pro membership hides all ads, plus gives you double the colors in the color bucket, and more awesome pro features!

[Learn more, Memberships starting at \\$2.50/m!](#)

**Follow me
on Twitter!**

@ConvertingColor