

Converting Colors

Hex(A8714D)

Have a look what the booklet for
Hex(A8714D) contains.

Hex(A8714D)	3
<i>Conversions</i>	4
<i>Details</i>	6
<i>Harmonies</i>	11
<i>Previews</i>	23
<i>Color Blindness Simulation</i>	26
<i>CSS Examples</i>	29

Color

Hex(A8714D)

Conversions

Conversions Part 1

Format	Color
Hex	A8714D
RGB	168, 113, 77
RGB Percent	66%, 44%, 30%
CMY	0.3412, 0.5569, 0.6980
CMYK	0.00, 0.33, 0.54, 0.34
HSL	24°, 37%, 48%
HSV	24°, 54%, 66%
XYZ	23.3931, 20.6709, 9.7781
YIQ	125.3410, 44.3360, 0.4640

Conversions

Conversions Part 2

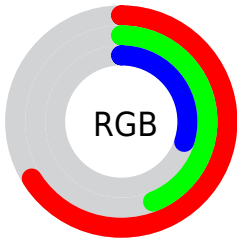
Format	Color
R _Y B	168, 137, 77
Decimal	11039053
CIE Lab	52.59, 17.71, 28.69
CIE LCh	53, 33.716, 58.318
Yxy	20.6709, 0.4345, 0.3839
Android (android.graphics.Color)	4289229133 (0xFFA8714D)
YUV	125.3410, -23.8321, 37.4119
Hunter-Lab	45.4653, 12.2789, 19.0743

Details

The Hex color **A8714D** is a dark color, and the websafe version is hex **996633**. A complement of this color would be **4D84A8**, and the grayscale version is **7E7E7E**.

A 20% lighter version of the original color is **E2A57F**, and **71411F** is the 20% darker color. If you saturate the color by 10%, you get **A8673C**, and if you desaturate by 10%, it is **A87B5E**.

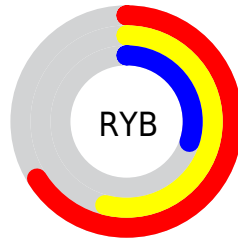
Distribution



Red (66%)

Green (44%)

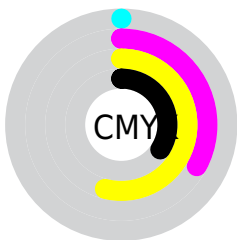
Blue (30%)



Red (66%)

Yellow (54%)

Blue (30%)

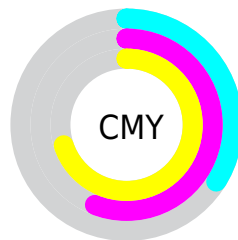


Cyan (0%)

Magenta (33%)

Yellow (54%)

Black (34%)



Cyan (34%)

Magenta (56%)

Yellow (70%)

Brightness & Saturation Gradients

These gradients show how the Hex color A8714D changes by changing the brightness by 10 percent. The first figure shows a shift by +10% for each color and the second figure -10%.

Similar to the brightness gradients but the following saturation gradients show a change of the Hex color A8714D by changing the saturation by 10% instead.

 A8714D

 A8714D

FFFFFF

 8C5836

 E2A57F

 71411F

 FFC099

 562A09

 FFDCB4

 3D1500

 FFF9CF

 250000

 FFFFEC

 000000

 A8714D

 A8714D

 A8673C

 A87B5E

 A85D2B

 A8856F

 A8531B

 A88F7F

 A8480A

 A89A90

 A84200

 A8A4A1

 A8AEB2

 A8B8C3

 A8C2D3

 A8CCE4

Harmonies

Analogous

The Analogous color harmony consists of three colors that are next to each other on the color wheel.



B46964



A8714D



917B43

Triad

The Triadic color harmony groups three colors that are evenly spaced from another and form a triangle on the color wheel.



A8714D



228D7B



7E77B0

Complementary

The Complementary color scheme is a pair of colors which are on the opposite of each other on the color wheel.



A8714D



4D84A8

Split Complementary

Split-complementary colors differ from the complementary color scheme. The scheme consists of three colors, the original color and two neighbors of the complement color.



4D81B7



A8714D



008C98

Square

The Square scheme is like the rectangle color scheme, but the four colors are evenly spaced on the color wheel.



A8714D



518A5E



0088AE



A06C9C

Rectangle

The Rectangle color scheme consists of four colors that form a rectangle on the color wheel.



A8714D



7E8145



0088AE



6F7AB4

Sweetspot

The Sweet Spot groups the original color and five complimentary colors.



A8714D



DBC6B8



A84D85



6E6159



EDEDED



6E6E6E

Same Dimension

The Same Dimension uses a secret algorithm to generate beautiful new colors.



A8714D



DB854D



A89D4D



544F4C



943B00



140800

Inverse Universe

The Inverse Universe completely reimagines the original color for something new.



4D84A8



4DA3DB



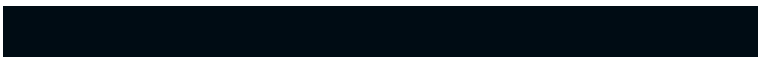
4D58A8



4C5154



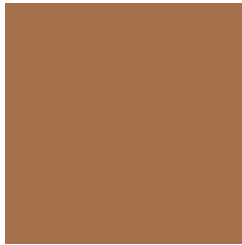
005994



000C14

Previews

White Background



This preview shows how the Hex color A8714D looks on a white background.

Color Contrast Check

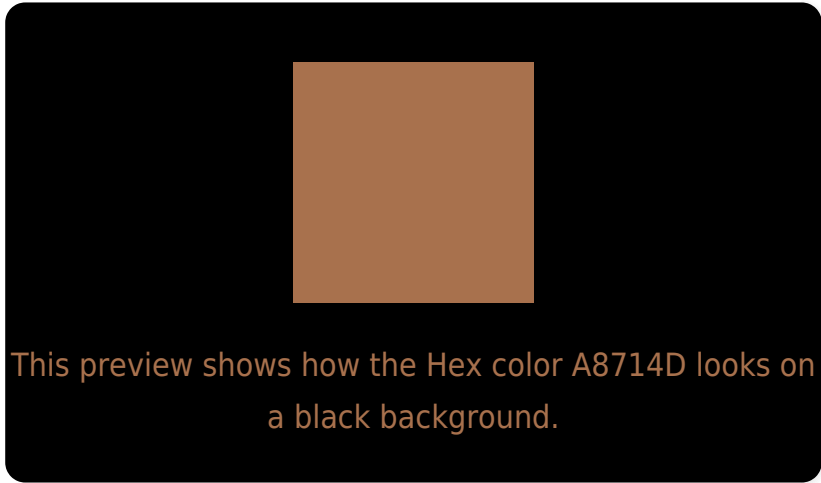
Large Text (above 18pt) WCAG AA ✓ Pass

Any Text WCAG AA × Fail

Large Text (above 18pt) WCAG AAA × Fail

Any Text WCAG AAA × Fail

Black Background



Color Contrast Check

Large Text (above 18pt) WCAG AA ✓ Pass

Any Text WCAG AA ✓ Pass

Large Text (above 18pt) WCAG AAA ✓ Pass

Any Text WCAG AAA × Fail

If you want to check with other color combinations, try the [Color Contrast Checker](#).

Hex A8714D Background



This preview shows how black text looks on a background with the Hex color A8714D.

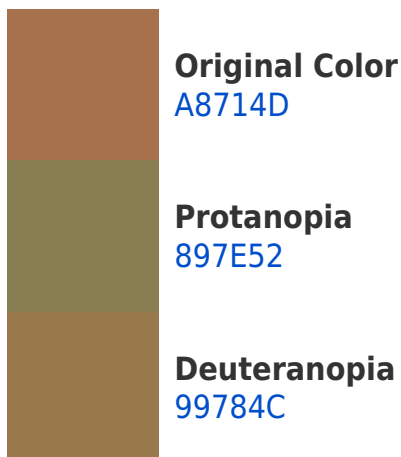


This preview shows how white text looks on a background with the Hex color A8714D.

Color Blindness Simulation

Color vision deficiency is a very complex topic, and I could not describe the different causes any better than Wikipedia does, so if you want to learn more, you should check out their [article about color blindness](#).

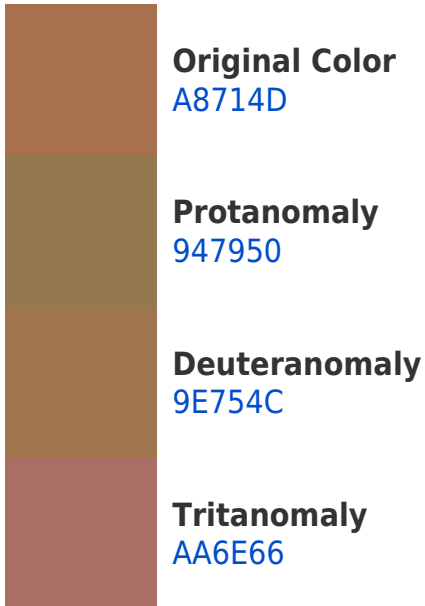
Dichromacy





Tritanopia
AB6C74

Trichromacy



Monochromacy



CSS Examples

Text

The CSS property to change the color of the text to Hex A8714D is called "color". The color property can be set on classes, ids or directly on the HTML element.

This example shows how text in the color #A8714D looks like.

```
.text, #text, p{  
    color:#A8714D  
}
```

If you want to add a text shadow in that color use the text-shadow property, you can generate a text shadow directly with our [CSS Text Shadow Generator](#).

Here you see how black text with a 4 pixel #A8714D colored shadow looks like.

```
.shadow{ text-shadow: 4px 4px 2px #A8714D
}
```

Border

The CSS property to change the border of an element to Hex A8714D is called "border". The border property can be set on classes, ids or directly on the HTML element.

This example shows the color as border, it can be applied via the CSS property "border" or "border-color".

```
.border, #border, table{ border:4px solid
#A8714D }
```

If only the border color should be changed use the property `border-color`.

```
.border{ border-color:#A8714D }
```

If you want to add a box shadow in that color use:

Here you see how a box with a 4 pixel #A8714D colored shadow looks like.

```
.boxshadow{ -moz-box-shadow:4px 4px 4px  
4px #A8714D; -webkit-box-shadow:4px 4px  
4px 4px #A8714D; box-shadow:4px 4px 4px  
4px #A8714D }
```

Background

The CSS property to change the background color of an element to Hex A8714D is called "background". The background property can be set on classes, ids or directly on the HTML element.

```
.background, #background, body{  
background:#A8714D }
```

If only the background color should be changed can be used:

```
.background{ background-color:#A8714D }
```

This example shows the color as background, it is applied via the CSS property "background".

To optimize and compress your CSS code, you can use our [online CSS compressor and optimizer](#) based on csstidy. If you want to create a linear or radial gradient as background or border, check our [CSS Gradient Generator](#).

Hey! You found this booklet interesting? Support Converting Colors with the new Membership Option!

The pro membership hides all ads, plus gives you double the colors in the color bucket, and more awesome pro features!

[Learn more, Memberships starting at \\$2.50/m!](#)

**Follow me
on Twitter!**

@ConvertingColor