

Converting Colors

Hex(A8765A)

Have a look what the booklet for
Hex(A8765A) contains.

Hex(A8765A)	3
<i>Conversions</i>	4
<i>Details</i>	6
<i>Harmonies</i>	11
<i>Previews</i>	23
<i>Color Blindness Simulation</i>	26
<i>CSS Examples</i>	29

Color

Hex(A8765A)

Conversions

Conversions Part 1

Format	Color
Hex	A8765A
RGB	168, 118, 90
RGB Percent	66%, 46%, 35%
CMY	0.3412, 0.5373, 0.6471
CMYK	0.00, 0.30, 0.46, 0.34
HSL	22°, 31%, 51%
HSV	22°, 46%, 66%
XYZ	24.4723, 22.0199, 12.6333
YIQ	129.7580, 38.7880, 1.8920

Conversions

Conversions Part 2

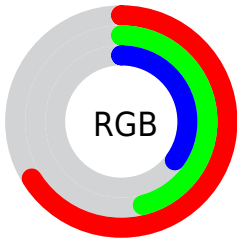
Format	Color
R_{YB}	168, 134, 90
Decimal	11040346
CIE Lab	54.05, 16.16, 23.23
CIE LCh	54, 28.293, 55.174
Yxy	22.0199, 0.4139, 0.3724
Android (android.graphics.Color)	4289230426 (0xFFA8765A)
YUV	129.7580, -19.6007, 33.5382
Hunter-Lab	46.9253, 10.9713, 16.8856

Details

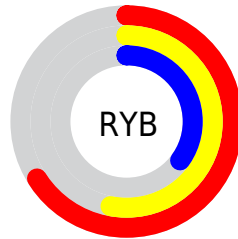
The Hex color **A8765A** is a dark color, and the websafe version is hex **996633**. A complement of this color would be **5A8CA8**, and the grayscale version is **828282**.

A 20% lighter version of the original color is **E1AA8C**, and **72452C** is the 20% darker color. If you saturate the color by 10%, you get **A86B49**, and if you desaturate by 10%, it is **A8816B**.

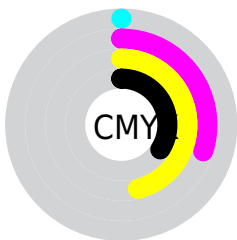
Distribution



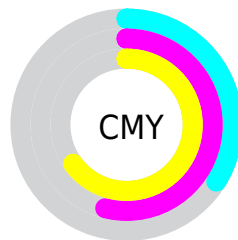
- Red (66%)
- Green (46%)
- Blue (35%)



- Red (66%)
- Yellow (53%)
- Blue (35%)



- Cyan (0%)
- Magenta (30%)
- Yellow (46%)
- Black (34%)



- Cyan (34%)
- Magenta (54%)
- Yellow (65%)

Brightness & Saturation Gradients

These gradients show how the Hex color A8765A changes by changing the brightness by 10 percent. The first figure shows a shift by +10% for each color and the second figure -10%.

Similar to the brightness gradients but the following saturation gradients show a change of the Hex color A8765A by changing the saturation by 10% instead.



A8765A



A8765A

FFFFFF



8C5D42



E1AA8C



72452C



FEC6A7



572F17



FFE2C2



3F1900



FFFEDE



260200



FFFFFFB



000000



A8765A



A8765A



A86B49



A8816B



A86038



A88C7C

 A85628

 A8968C

 A84B17

 A8A19D

 A84006

 A8ACAE

 A83C00

 A8B7BF

 A8C1D0

 A8CCE0

 A8D7F1

Harmonies

Analogous

The Analogous color harmony consists of three colors that are next to each other on the color wheel.



B1706E



A8765A



957E50

Triad

The Triadic color harmony groups three colors that are evenly spaced from another and form a triangle on the color wheel.



A8765A



428E7C



7F7CAD

Complementary

The Complementary color scheme is a pair of colors which are on the opposite of each other on the color wheel.



A8765A



5A8CA8

Split Complementary

Split-complementary colors differ from the complementary color scheme. The scheme consists of three colors, the original color and two neighbors of the complement color.



5985B1



A8765A



298E95

Square

The Square scheme is like the rectangle color scheme, but the four colors are evenly spaced on the color wheel.



A8765A



608B65



348BA9



9C749D

Rectangle

The Rectangle color scheme consists of four colors that form a rectangle on the color wheel.



A8765A



858452



348BA9



737FB0

Sweetspot

The Sweet Spot groups the original color and five complimentary colors.



A8765A



DBC8BD



A85A8D



6E625B



EDEDED



6E6E6E

Same Dimension

The Same Dimension uses a secret algorithm to generate beautiful new colors.



A8765A



DB8D60



A89C5A



544F4C



943500



140700

Inverse Universe

The Inverse Universe completely reimagines the original color for something new.



5A8CA8



60AFDB



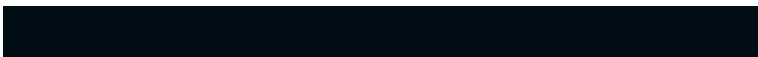
5A66A8



4C5154



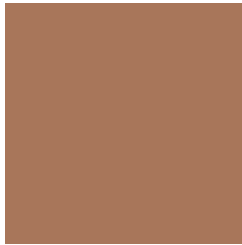
005F94



000D14

Previews

White Background



This preview shows how the Hex color A8765A looks on a white background.

Color Contrast Check

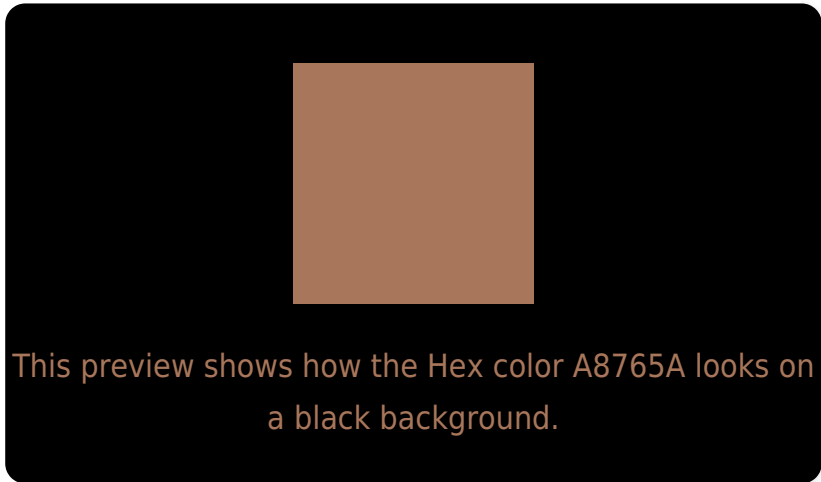
Large Text (above 18pt) WCAG AA ✓ Pass

Any Text WCAG AA × Fail

Large Text (above 18pt) WCAG AAA × Fail

Any Text WCAG AAA × Fail

Black Background



Color Contrast Check

Large Text (above 18pt) WCAG AA ✓ Pass

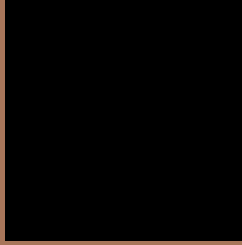
Any Text WCAG AA ✓ Pass

Large Text (above 18pt) WCAG AAA ✓ Pass

Any Text WCAG AAA × Fail

If you want to check with other color combinations, try the [Color Contrast Checker](#).

Hex A8765A Background



This preview shows how black text looks on a background with the Hex color A8765A.



This preview shows how white text looks on a background with the Hex color A8765A.

Color Blindness Simulation

Color vision deficiency is a very complex topic, and I could not describe the different causes any better than Wikipedia does, so if you want to learn more, you should check out their [article about color blindness](#).

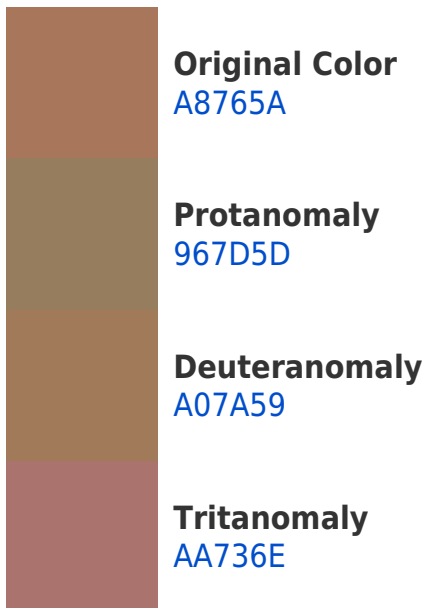
Dichromacy



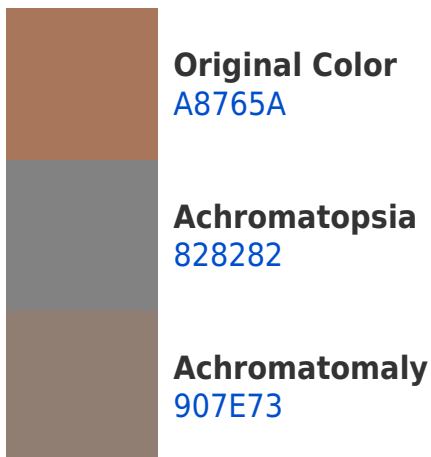


Tritanopia
AB727A

Trichromacy



Monochromacy



CSS Examples

Text

The CSS property to change the color of the text to Hex A8765A is called "color". The color property can be set on classes, ids or directly on the HTML element.

This example shows how text in the color #A8765A looks like.

```
.text, #text, p{  
    color:#A8765A  
}
```

If you want to add a text shadow in that color use the text-shadow property, you can generate a text shadow directly with our [CSS Text Shadow Generator](#).

Here you see how black text with a 4 pixel #A8765A colored shadow looks like.

```
.shadow{ text-shadow: 4px 4px 2px #A8765A
}
```

Border

The CSS property to change the border of an element to Hex A8765A is called "border". The border property can be set on classes, ids or directly on the HTML element.

This example shows the color as border, it can be applied via the CSS property "border" or "border-color".

```
.border, #border, table{ border:4px solid
#A8765A }
```

If only the border color should be changed use the property `border-color`.

```
.border{ border-color:#A8765A }
```

If you want to add a box shadow in that color use:

Here you see how a box with a 4 pixel #A8765A colored shadow looks like.

```
.boxshadow{ -moz-box-shadow:4px 4px 4px  
4px #A8765A; -webkit-box-shadow:4px 4px  
4px 4px #A8765A; box-shadow:4px 4px 4px  
4px #A8765A }
```

Background

The CSS property to change the background color of an element to Hex A8765A is called "background". The background property can be set on classes, ids or directly on the HTML element.

```
.background, #background, body{  
background:#A8765A }
```

If only the background color should be changed can be used:

```
.background{ background-color:#A8765A }
```

This example shows the color as background, it is applied via the CSS property "background".

To optimize and compress your CSS code, you can use our [online CSS compressor and optimizer](#) based on csstidy. If you want to create a linear or radial gradient as background or border, check our [CSS Gradient Generator](#).

Hey! You found this booklet interesting? Support Converting Colors with the new Membership Option!

The pro membership hides all ads, plus gives you double the colors in the color bucket, and more awesome pro features!

[Learn more, Memberships starting at \\$2.50/m!](#)

**Follow me
on Twitter!**

@ConvertingColor