

Converting Colors

Hex(A87747)

Have a look what the booklet for
Hex(A87747) contains.

Hex(A87747)	3
<i>Conversions</i>	4
<i>Details</i>	6
<i>Harmonies</i>	11
<i>Previews</i>	23
<i>Color Blindness Simulation</i>	26
<i>CSS Examples</i>	29

Color

Hex(A87747)

Conversions

Conversions Part 1

Format	Color
Hex	A87747
RGB	168, 119, 71
RGB Percent	66%, 47%, 28%
CMY	0.3412, 0.5333, 0.7216
CMYK	0.00, 0.29, 0.58, 0.34
HSL	30°, 41%, 47%
HSV	30°, 58%, 66%
XYZ	23.8826, 21.9734, 8.9438
YIQ	128.1790, 44.6120, -4.5400

Conversions

Conversions Part 2

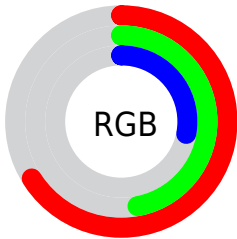
Format	Color
R_{YB}	168, 166, 71
Decimal	11040583
CIE _{Lab}	54.00, 13.79, 33.75
CIE _{LCh}	54, 36.458, 67.768
Yxy	21.9734, 0.4358, 0.4010
Android (android.graphics.Color)	4289230663 (0xFFA87747)
YUV	128.1790, -28.1892, 34.9230
Hunter-Lab	46.8758, 8.9107, 21.5007

Details

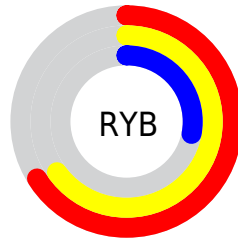
The Hex color **A87747** is a dark color, and the websafe version is hex **996633**. A complement of this color would be **4778A8**, and the grayscale version is **808080**.

A 20% lighter version of the original color is **E2AB79**, and **714719** is the 20% darker color. If you saturate the color by 10%, you get **A86F36**, and if you desaturate by 10%, it is **A87F58**.

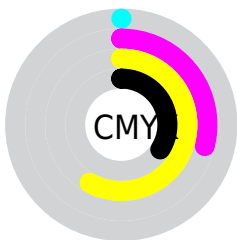
Distribution



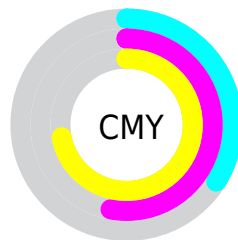
- Red (66%)
- Green (47%)
- Blue (28%)



- Red (66%)
- Yellow (65%)
- Blue (28%)



- Cyan (0%)
- Magenta (29%)
- Yellow (58%)
- Black (34%)



- Cyan (34%)
- Magenta (53%)
- Yellow (72%)

Brightness & Saturation Gradients

These gradients show how the Hex color A87747 changes by changing the brightness by 10 percent. The first figure shows a shift by +10% for each color and the second figure -10%.

Similar to the brightness gradients but the following saturation gradients show a change of the Hex color A87747 by changing the saturation by 10% instead.

 A87747

 A87747

FFFFFF

 8C5E30

 E2AB79

 714719

 FFC793

 563000

 FFE3AD

 3C1B00

 FFFFC9

 240300

 FFFF E5

 000000

 A87747

 A87747

 A86F36

 A87F58

 A86625

 A88869

 A85E15

 A89079

 A85504

 A8998A

 A85300

 A8A19B

 A8AAAC

 A8B2BD

 A8BBCD

 A8C3DE

Harmonies

Analogous

The Analogous color harmony consists of three colors that are next to each other on the color wheel.



B96D5C



A87747



8D8241

Triad

The Triadic color harmony groups three colors that are evenly spaced from another and form a triangle on the color wheel.



A87747



009289



8F76B3

Complementary

The Complementary color scheme is a pair of colors which are on the opposite of each other on the color wheel.



A87747



4778A8

Split Complementary

Split-complementary colors differ from the complementary color scheme. The scheme consists of three colors, the original color and two neighbors of the complement color.



5E82BF



A87747



0090A7

Square

The Square scheme is like the rectangle color scheme, but the four colors are evenly spaced on the color wheel.



A87747



419068



018BBB



AF6B9A

Rectangle

The Rectangle color scheme consists of four colors that form a rectangle on the color wheel.



A87747



778848



018BBB



807AB9

Sweetspot

The Sweet Spot groups the original color and five complimentary colors.



A87747



DBC8B6



A84779



6E6358



EDEDED



6E6E6E

Same Dimension

The Same Dimension uses a secret algorithm to generate beautiful new colors.



A87747



DB8F44



A8A647



54504C



944900



140A00

Inverse Universe

The Inverse Universe completely reimagines the original color for something new.



4778A8



4490DB



4749A8



4C5054



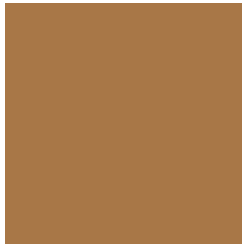
004B94



000A14

Previews

White Background



This preview shows how the Hex color A87747 looks on a white background.

Color Contrast Check

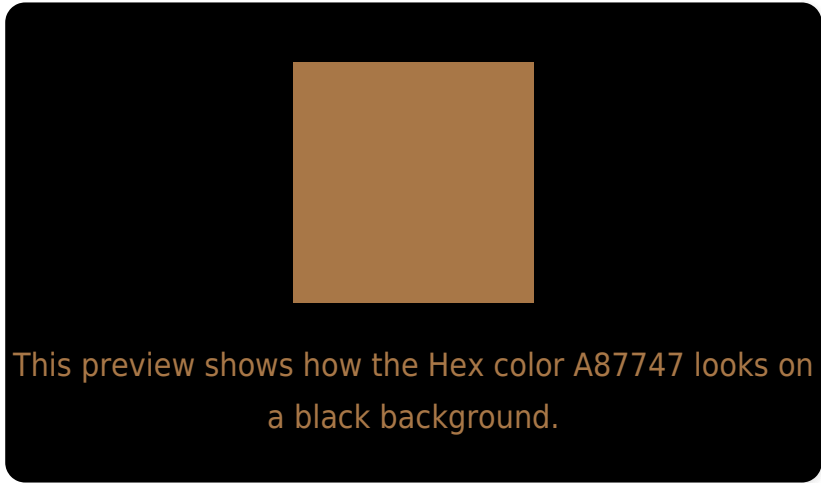
Large Text (above 18pt) WCAG AA ✓ Pass

Any Text WCAG AA × Fail

Large Text (above 18pt) WCAG AAA × Fail

Any Text WCAG AAA × Fail

Black Background



Color Contrast Check

Large Text (above 18pt) WCAG AA ✓ Pass

Any Text WCAG AA ✓ Pass

Large Text (above 18pt) WCAG AAA ✓ Pass

Any Text WCAG AAA × Fail

If you want to check with other color combinations, try the [Color Contrast Checker](#).

Hex A87747 Background



This preview shows how black text looks on a background with the Hex color A87747.



This preview shows how white text looks on a background with the Hex color A87747.

Color Blindness Simulation

Color vision deficiency is a very complex topic, and I could not describe the different causes any better than Wikipedia does, so if you want to learn more, you should check out their [article about color blindness](#).

Dichromacy



Original Color
A87747

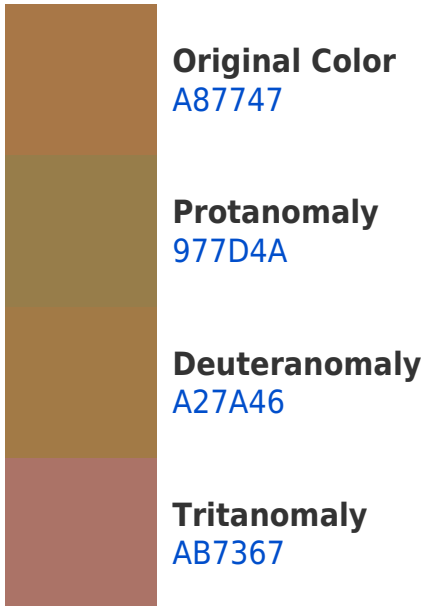
Protanopia
8E814B

Deuteranopia
9E7B46

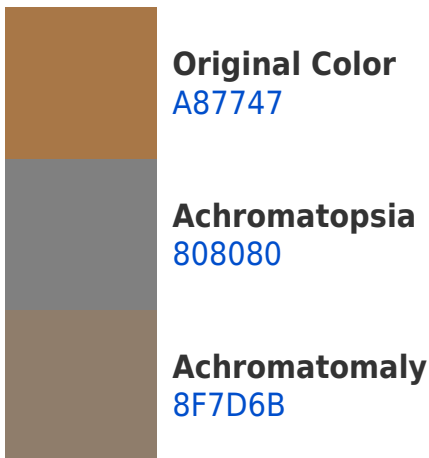


Tritanopia
AC717A

Trichromacy



Monochromacy



CSS Examples

Text

The CSS property to change the color of the text to Hex A87747 is called "color". The color property can be set on classes, ids or directly on the HTML element.

This example shows how text in the color #A87747 looks like.

```
.text, #text, p{  
    color:#A87747  
}
```

If you want to add a text shadow in that color use the text-shadow property, you can generate a text shadow directly with our [CSS Text Shadow Generator](#).

Here you see how black text with a 4 pixel #A87747 colored shadow looks like.

```
.shadow{ text-shadow: 4px 4px 2px #A87747  
}
```

Border

The CSS property to change the border of an element to Hex A87747 is called "border". The border property can be set on classes, ids or directly on the HTML element.

This example shows the color as border, it can be applied via the CSS property "border" or "border-color".

```
.border, #border, table{ border:4px solid  
#A87747 }
```

If only the border color should be changed use the property `border-color`.

```
.border{ border-color:#A87747 }
```

If you want to add a box shadow in that color use:

Here you see how a box with a 4 pixel #A87747 colored shadow looks like.

```
.boxshadow{ -moz-box-shadow:4px 4px 4px  
4px #A87747; -webkit-box-shadow:4px 4px  
4px 4px #A87747; box-shadow:4px 4px 4px  
4px #A87747 }
```

Background

The CSS property to change the background color of an element to Hex A87747 is called "background". The background property can be set on classes, ids or directly on the HTML element.

```
.background, #background, body{  
background:#A87747 }
```

If only the background color should be changed can be used:

```
.background{ background-color:#A87747 }
```

This example shows the color as background, it is applied via the CSS property "background".

To optimize and compress your CSS code, you can use our [online CSS compressor and optimizer](#) based on csstidy. If you want to create a linear or radial gradient as background or border, check our [CSS Gradient Generator](#).

Hey! You found this booklet interesting? Support Converting Colors with the new Membership Option!

The pro membership hides all ads, plus gives you double the colors in the color bucket, and more awesome pro features!

[Learn more, Memberships starting at \\$2.50/m!](#)

**Follow me
on Twitter!**

@ConvertingColor