

# Converting Colors

Hex(A87F5D)

Have a look what the booklet for  
Hex(A87F5D) contains.

<b>Hex(A87F5D)</b> .....	3
<b><i>Conversions</i></b> .....	4
<b><i>Details</i></b> .....	6
<b><i>Harmonies</i></b> .....	11
<b><i>Previews</i></b> .....	23
<b><i>Color Blindness Simulation</i></b> .....	26
<b><i>CSS Examples</i></b> .....	29

# Color

Hex(A87F5D)

# Conversions

## Conversions Part 1

<b>Format</b>	<b>Color</b>
Hex	A87F5D
RGB	168, 127, 93
RGB Percent	66%, 50%, 36%
CMY	0.3412, 0.5020, 0.6353
CMYK	0.00, 0.24, 0.45, 0.34
HSL	27°, 30%, 51%
HSV	27°, 45%, 66%
XYZ	25.7136, 24.2939, 13.6899
YIQ	135.3830, 35.3500, -1.8820

# Conversions

## Conversions Part 2

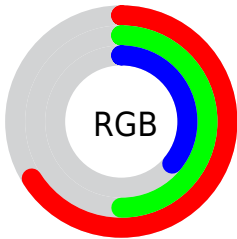
<b>Format</b>	<b>Color</b>
<b>RYB</b>	168, 155, 93
Decimal	11042653
CIELab	56.38, 11.39, 24.60
CIELCh	56, 27.110, 65.151
Yxy	24.2939, 0.4037, 0.3814
Android (android.graphics.Color)	4289232733 (0xFFA87F5D)
YUV	135.3830, -20.8948, 28.6051
Hunter-Lab	49.2888, 6.8666, 18.0345

# Details

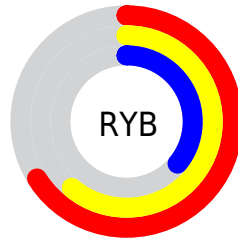
The Hex color **A87F5D** is a dark color, and the websafe version is hex **CC9966**. A complement of this color would be **5D86A8**, and the grayscale version is **888888**.

A 20% lighter version of the original color is **E1B490**, and **724E2E** is the 20% darker color. If you saturate the color by 10%, you get **A8764C**, and if you desaturate by 10%, it is **A8886E**.

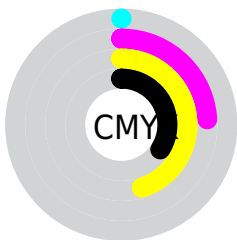
# Distribution



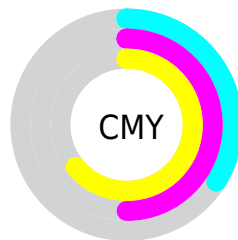
- Red (66%)
- Green (50%)
- Blue (36%)



- Red (66%)
- Yellow (61%)
- Blue (36%)



- Cyan (0%)
- Magenta (24%)
- Yellow (45%)
- Black (34%)



- Cyan (34%)
- Magenta (50%)
- Yellow (64%)

# Brightness & Saturation Gradients

These gradients show how the Hex color A87F5D changes by changing the brightness by 10 percent. The first figure shows a shift by +10% for each color and the second figure -10%.

Similar to the brightness gradients but the following saturation gradients show a change of the Hex color A87F5D by changing the saturation by 10% instead.



 A87F5D

 A87F5D

FFFFFF

 8D6645

 E1B490

 724E2E

 FECFAA

 583719

 FFECC6

 3F2100

 FFFFE2

 270D00

FFFFFFE

 000000

 A87F5D

 A87F5D

 A8764C

 A8886E

 A86D3B

 A8917F

 A8632B

 A89B8F

 A85A1A

 A8A4A0

 A85109

 A8ADB1

 A84C00

 A8B6C2

 A8BFD3

 A8C8E3

 A8D2F4

# Harmonies

## Analogous

The Analogous color harmony consists of three colors that are next to each other on the color wheel.



B4786D



A87F5D



948758

# Triad

The Triadic color harmony groups three colors that are evenly spaced from another and form a triangle on the color wheel.



A87F5D



44948B



9080AE

# Complementary

The Complementary color scheme is a pair of colors which are on the opposite of each other on the color wheel.



A87F5D



5D86A8

# Split Complementary

Split-complementary colors differ from the complementary color scheme. The scheme consists of three colors, the original color and two neighbors of the complement color.



6E88B6



A87F5D



3793A2

# Square

The Square scheme is like the rectangle color scheme, but the four colors are evenly spaced on the color wheel.



A87F5D



5E9273



4B8FB1



A9789B

# Rectangle

The Rectangle color scheme consists of four colors that form a rectangle on the color wheel.



A87F5D



838C5C



4B8FB1



8582B2



# Sweetspot

The Sweet Spot groups the original color and five complimentary colors.



A87F5D



DBCCBF



A85D86



6E645C



EDEDED



6E6E6E



# Same Dimension

The Same Dimension uses a secret algorithm to generate beautiful new colors.



A87F5D



DB9B65



A8A45D



54504C



944300



140900



# Inverse Universe

The Inverse Universe completely reimagines the original color for something new.



5D86A8



65A6DB



5D61A8



4C5054



005194

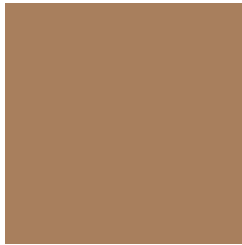


000B14



# Previews

## White Background



This preview shows how the Hex color A87F5D looks on a white background.

## Color Contrast Check

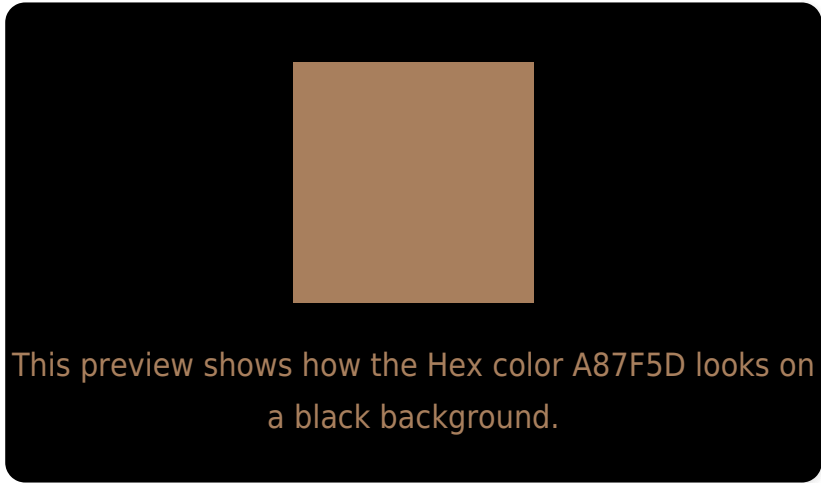
Large Text (above 18pt) WCAG AA ✓ Pass

Any Text WCAG AA × Fail

Large Text (above 18pt) WCAG AAA × Fail

Any Text WCAG AAA × Fail

# Black Background



## Color Contrast Check

Large Text (above 18pt) WCAG AA ✓ Pass

Any Text WCAG AA ✓ Pass

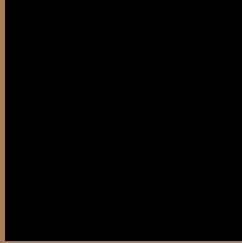
Large Text (above 18pt) WCAG AAA ✓ Pass

Any Text WCAG AAA × Fail

If you want to check with other color combinations, try the [Color Contrast Checker](#).



## Hex A87F5D Background



This preview shows how black text looks on a background with the Hex color A87F5D.



This preview shows how white text looks on a background with the Hex color A87F5D.

# Color Blindness Simulation

Color vision deficiency is a very complex topic, and I could not describe the different causes any better than Wikipedia does, so if you want to learn more, you should check out their [article about color blindness](#).


## Dichromacy



**Original Color**  
A87F5D

**Protanopia**  
928761

**Deuteranopia**  
A2825C



**Tritanopia**  
AC7A83

# Trichromacy



**Original Color**  
A87F5D

**Protanomaly**  
9A8460

**Deuteranomaly**  
A4815C

**Tritanomaly**  
AB7C75

# Monochromacy



**Original Color**  
A87F5D

**Achromatopsia**  
878787

**Achromatomaly**  
938478

# CSS Examples

## Text

The CSS property to change the color of the text to Hex A87F5D is called "color". The color property can be set on classes, ids or directly on the HTML element.

This example shows how text in the color #A87F5D looks like.

```
.text, #text, p{  
    color:#A87F5D  
}
```

If you want to add a text shadow in that color use the text-shadow property, you can generate a text shadow directly with our [CSS Text Shadow Generator](#).

Here you see how black text with a 4 pixel #A87F5D colored shadow looks like.

```
.shadow{ text-shadow: 4px 4px 2px #A87F5D  
}
```

## Border

The CSS property to change the border of an element to Hex A87F5D is called "border". The border property can be set on classes, ids or directly on the HTML element.

This example shows the color as border, it can be applied via the CSS property "border" or "border-color".

```
.border, #border, table{ border:4px solid  
#A87F5D }
```

If only the border color should be changed use the property `border-color`.

```
.border{ border-color:#A87F5D }
```

If you want to add a box shadow in that color use:

Here you see how a box with a 4 pixel #A87F5D colored shadow looks like.

```
.boxshadow{ -moz-box-shadow:4px 4px 4px  
4px #A87F5D; -webkit-box-shadow:4px 4px  
4px 4px #A87F5D; box-shadow:4px 4px 4px  
4px #A87F5D }
```

# Background

The CSS property to change the background color of an element to Hex A87F5D is called "background". The background property can be set on classes, ids or directly on the HTML element.

```
.background, #background, body{  
background:#A87F5D }
```

If only the background color should be changed can be used:

```
.background{ background-color:#A87F5D }
```

This example shows the color as background, it is applied via the CSS property "background".

To optimize and compress your CSS code, you can use our [online CSS compressor and optimizer](#) based on csstidy. If you want to create a linear or radial gradient as background or border, check our [CSS Gradient Generator](#).



Hey! You found this booklet interesting? Support Converting Colors with the new Membership Option!

The pro membership hides all ads, plus gives you double the colors in the color bucket, and more awesome pro features!

**[Learn more, Memberships starting at \\$2.50/m!](#)**

**Follow me  
on Twitter!**

@ConvertingColor