

Converting Colors

Hex(A8845E)

Have a look what the booklet for
Hex(A8845E) contains.

Hex(A8845E)	3
<i>Conversions</i>	4
<i>Details</i>	6
<i>Harmonies</i>	11
<i>Previews</i>	23
<i>Color Blindness Simulation</i>	26
<i>CSS Examples</i>	29

Color

Hex(A8845E)

Conversions

Conversions Part 1

Format	Color
Hex	A8845E
RGB	168, 132, 94
RGB Percent	66%, 52%, 37%
CMY	0.3412, 0.4824, 0.6314
CMYK	0.00, 0.21, 0.44, 0.34
HSL	31°, 30%, 51%
HSV	31°, 44%, 66%
XYZ	26.4201, 25.6355, 14.1453
YIQ	138.4320, 33.6540, -4.1860

Conversions

Conversions Part 2

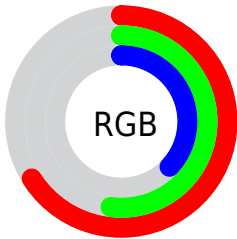
Format	Color
RYB	164, 168, 94
Decimal	11043934
CIELab	57.69, 8.69, 25.76
CIElCh	58, 27.183, 71.363
Yxy	25.6355, 0.3991, 0.3872
Android (android.graphics.Color)	4289234014 (0xFFA8845E)
YUV	138.4320, -21.9050, 25.9311
Hunter-Lab	50.6315, 4.5381, 18.8777

Details

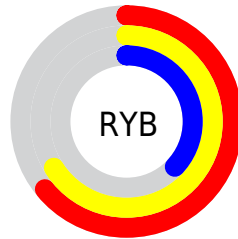
The Hex color **A8845E** is a dark color, and the websafe version is hex **CC9966**. A complement of this color would be **5E82A8**, and the grayscale version is **8B8B8B**.

A 20% lighter version of the original color is **E1B991**, and **72532F** is the 20% darker color. If you saturate the color by 10%, you get **A87C4D**, and if you desaturate by 10%, it is **A88C6F**.

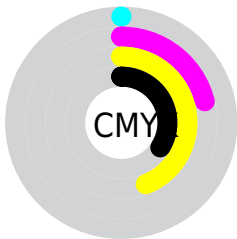
Distribution



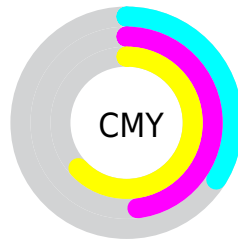
- Red (66%)
- Green (52%)
- Blue (37%)



- Red (64%)
- Yellow (66%)
- Blue (37%)



- Cyan (0%)
- Magenta (21%)
- Yellow (44%)
- Black (34%)



- Cyan (34%)
- Magenta (48%)
- Yellow (63%)

Brightness & Saturation Gradients

These gradients show how the Hex color A8845E changes by changing the brightness by 10 percent. The first figure shows a shift by +10% for each color and the second figure -10%.

Similar to the brightness gradients but the following saturation gradients show a change of the Hex color A8845E by changing the saturation by 10% instead.



A8845E



A8845E

FFFFFF



8D6B46



E1B991



72532F



FED5AB



583C19



FFF1C7



402600



FFFFE3



271200



000000



A8845E



A8845E



A87C4D



A88C6F



A8743C



A89480

 A86B2C

 A89D90

 A8631B

 A8A5A1

 A85B0A

 A8ADB2

 A85600

 A8B5C3

 A8BDD4

 A8C5E4

 A8CEF5

Harmonies

Analogous

The Analogous color harmony consists of three colors that are next to each other on the color wheel.



B67D6C



A8845E



928C5C

Triad

The Triadic color harmony groups three colors that are evenly spaced from another and form a triangle on the color wheel.



A8845E



439893



9981AE

Complementary

The Complementary color scheme is a pair of colors which are on the opposite of each other on the color wheel.



A8845E



5E82A8

Split Complementary

Split-complementary colors differ from the complementary color scheme. The scheme consists of three colors, the original color and two neighbors of the complement color.



798AB9



A8845E



3D96A9

Square

The Square scheme is like the rectangle color scheme, but the four colors are evenly spaced on the color wheel.



A8845E



5C967B



5591B7



B07B9A

Rectangle

The Rectangle color scheme consists of four colors that form a rectangle on the color wheel.



A8845E



819161



5591B7



8F84B3

Sweetspot

The Sweet Spot groups the original color and five complimentary colors.



A8845E



DBCDBF



A85E83



6E655C



EDEDED



6E6E6E

Same Dimension

The Same Dimension uses a secret algorithm to generate beautiful new colors.



A8845E



DBA367



A8A85E



54504C



944C00



140A00

Inverse Universe

The Inverse Universe completely reimagines the original color for something new.



5E82A8



67A0DB



5E5EA8



4C5054



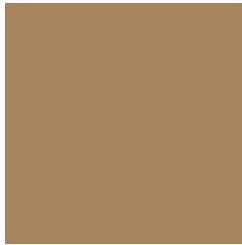
004894



000A14

Previews

White Background



This preview shows how the Hex color A8845E looks on a white background.

Color Contrast Check

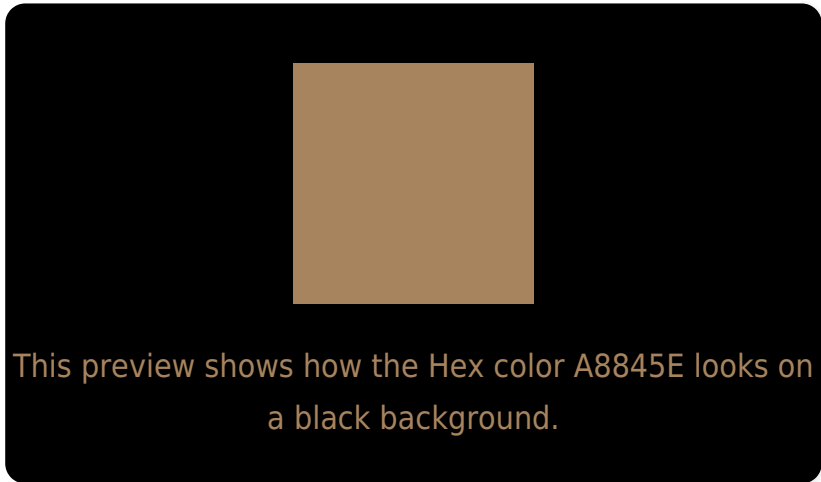
Large Text (above 18pt) WCAG AA ✓ Pass

Any Text WCAG AA × Fail

Large Text (above 18pt) WCAG AAA × Fail

Any Text WCAG AAA × Fail

Black Background



Color Contrast Check

Large Text (above 18pt) WCAG AA ✓ Pass

Any Text WCAG AA ✓ Pass

Large Text (above 18pt) WCAG AAA ✓ Pass

Any Text WCAG AAA × Fail

If you want to check with other color combinations, try the [Color Contrast Checker](#).

Hex A8845E Background



This preview shows how black text looks on a background with the Hex color A8845E.



This preview shows how white text looks on a background with the Hex color A8845E.

Color Blindness Simulation

Color vision deficiency is a very complex topic, and I could not describe the different causes any better than Wikipedia does, so if you want to learn more, you should check out their [article about color blindness](#).

Dichromacy



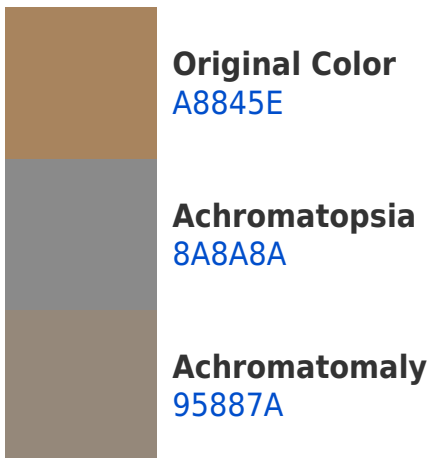


Tritanopia
AC7F88

Trichromacy



Monochromacy



CSS Examples

Text

The CSS property to change the color of the text to Hex A8845E is called "color". The color property can be set on classes, ids or directly on the HTML element.

This example shows how text in the color #A8845E looks like.

```
.text, #text, p{  
    color:#A8845E  
}
```

If you want to add a text shadow in that color use the text-shadow property, you can generate a text shadow directly with our [CSS Text Shadow Generator](#).

Here you see how black text with a 4 pixel #A8845E colored shadow looks like.

```
.shadow{ text-shadow: 4px 4px 2px #A8845E
}
```

Border

The CSS property to change the border of an element to Hex A8845E is called "border". The border property can be set on classes, ids or directly on the HTML element.

This example shows the color as border, it can be applied via the CSS property "border" or "border-color".

```
.border, #border, table{ border:4px solid
#A8845E }
```

If only the border color should be changed use the property `border-color`.

```
.border{ border-color:#A8845E }
```

If you want to add a box shadow in that color use:

Here you see how a box with a 4 pixel #A8845E colored shadow looks like.

```
.boxshadow{ -moz-box-shadow:4px 4px 4px  
4px #A8845E; -webkit-box-shadow:4px 4px  
4px 4px #A8845E; box-shadow:4px 4px 4px  
4px #A8845E }
```

Background

The CSS property to change the background color of an element to Hex A8845E is called "background". The background property can be set on classes, ids or directly on the HTML element.

```
.background, #background, body{  
background:#A8845E }
```

If only the background color should be changed can be used:

```
.background{ background-color:#A8845E }
```

This example shows the color as background, it is applied via the CSS property "background".

To optimize and compress your CSS code, you can use our [online CSS compressor and optimizer](#) based on csstidy. If you want to create a linear or radial gradient as background or border, check our [CSS Gradient Generator](#).

Hey! You found this booklet interesting? Support Converting Colors with the new Membership Option!

The pro membership hides all ads, plus gives you double the colors in the color bucket, and more awesome pro features!

[Learn more, Memberships starting at \\$2.50/m!](#)

**Follow me
on Twitter!**

@ConvertingColor