

# Converting Colors

Hex(A93A62)

Have a look what the booklet for  
Hex(A93A62) contains.

<b>Hex(A93A62)</b> .....	3
<b><i>Conversions</i></b> .....	4
<b><i>Details</i></b> .....	6
<b><i>Harmonies</i></b> .....	11
<b><i>Previews</i></b> .....	23
<b><i>Color Blindness Simulation</i></b> .....	26
<b><i>CSS Examples</i></b> .....	29

# Color

**Hex(A93A62)**

# Conversions

## Conversions Part 1

<b>Format</b>	<b>Color</b>
Hex	A93A62
RGB	169, 58, 98
RGB Percent	66%, 23%, 38%
CMY	0.3373, 0.7725, 0.6157
CMYK	0.00, 0.66, 0.42, 0.34
HSL	338°, 49%, 45%
HSV	338°, 66%, 66%
XYZ	20.0798, 12.3430, 12.8794
YIQ	95.7490, 53.3160, 35.9720

# Conversions

## Conversions Part 2

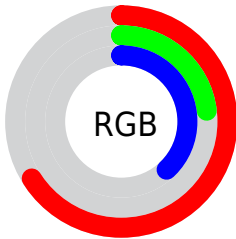
<b>Format</b>	<b>Color</b>
<b>R<sub>YB</sub></b>	169, 58, 98
Decimal	11090530
CIE Lab	41.76, 48.84, 1.40
CIE LCh	42, 48.862, 1.645
Yxy	12.3430, 0.4432, 0.2725
Android (android.graphics.Color)	4289280610 (0xFFA93A62)
YUV	95.7490, 1.1097, 64.2411
Hunter-Lab	35.1326, 40.5388, 2.8574

# Details

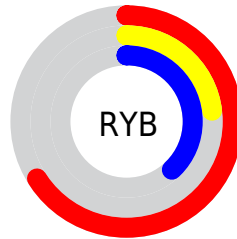
The Hex color **A93A62** is a dark color, and the websafe version is hex **993366**. A complement of this color would be **3AA981**, and the grayscale version is **606060**.

A 20% lighter version of the original color is **E47095**, and **700034** is the 20% darker color. If you saturate the color by 10%, you get **A92957**, and if you desaturate by 10%, it is **A94B6D**.

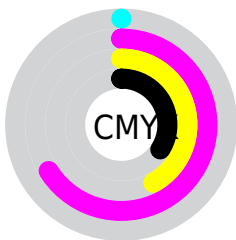
# Distribution



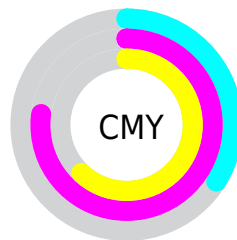
- Red (66%)
- Green (23%)
- Blue (38%)



- Red (66%)
- Yellow (23%)
- Blue (38%)



- Cyan (0%)
- Magenta (66%)
- Yellow (42%)
- Black (34%)



- Cyan (34%)
- Magenta (77%)
- Yellow (62%)

# Brightness & Saturation Gradients

These gradients show how the Hex color A93A62 changes by changing the brightness by 10 percent. The first figure shows a shift by +10% for each color and the second figure -10%.

Similar to the brightness gradients but the following saturation gradients show a change of the Hex color A93A62 by changing the saturation by 10% instead.



 A93A62

 A93A62

FFFFFF

 8C1D4A

 E47095

 700034

 FF8BAF

 55001F

 FFA6CA

 3C0005

 FFC3E7

 1A0001

 FFDFFF

 000000

 FFFCFF

 A93A62

 A93A62

 A92957

 A94B6D

 A9184C

 A95C78

 A90742

 A96D82

 A9003D

 A97E8D

 A98E98

 A99FA3

 A9B0AE

 A9C1B8

 A9D2C3

# Harmonies

## Analogous

The Analogous color harmony consists of three colors that are next to each other on the color wheel.



944589



A93A62



A7413B

# Triad

The Triadic color harmony groups three colors that are evenly spaced from another and form a triangle on the color wheel.



A93A62



4C6C15



0070A9

# Complementary

The Complementary color scheme is a pair of colors which are on the opposite of each other on the color wheel.



A93A62



3AA981

# Split Complementary

Split-complementary colors differ from the complementary color scheme. The scheme consists of three colors, the original color and two neighbors of the complement color.



00758C



A93A62



00723A

# Square

The Square scheme is like the rectangle color scheme, but the four colors are evenly spaced on the color wheel.



A93A62



746100



007564



0067B3

# Rectangle

The Rectangle color scheme consists of four colors that form a rectangle on the color wheel.



A93A62



9C4C23



007564



0072A1



# Sweetspot

The Sweet Spot groups the original color and five complimentary colors.



A93A62



DBAFBF



803AA9



6E535D



EDEDED



6E6E6E



# Same Dimension

The Same Dimension uses a secret algorithm to generate beautiful new colors.



A93A62



DB2E6C



A9493A



544C4F



940035



140007



# Inverse Universe

The Inverse Universe completely reimagines the original color for something new.



A93A62



DB2E6C



3A9AA9



544C4F



940035

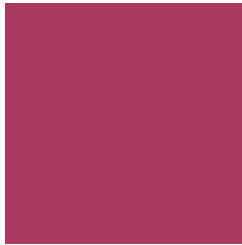


140007



# Previews

## White Background



This preview shows how the Hex color A93A62 looks on a white background.

## Color Contrast Check

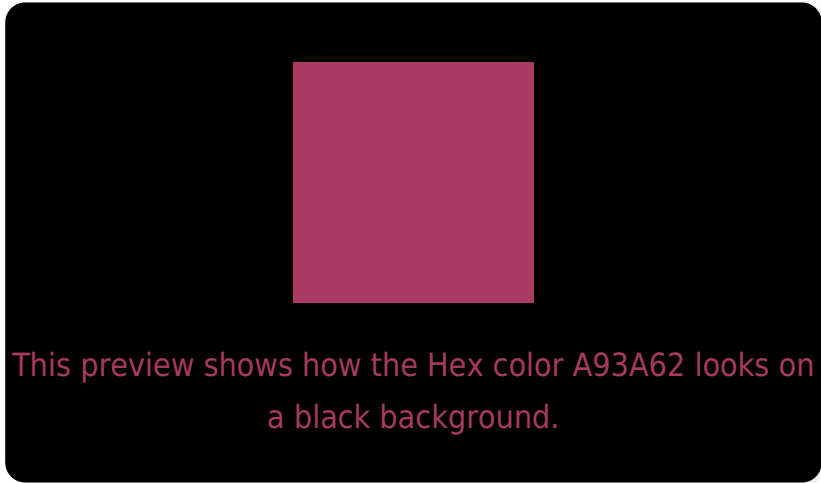
Large Text (above 18pt) WCAG AA ✓ Pass

Any Text WCAG AA ✓ Pass

Large Text (above 18pt) WCAG AAA ✓ Pass

Any Text WCAG AAA × Fail

# Black Background



## Color Contrast Check

Large Text (above 18pt) WCAG AA ✓ Pass

Any Text WCAG AA × Fail

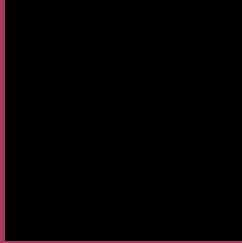
Large Text (above 18pt) WCAG AAA × Fail

Any Text WCAG AAA × Fail

If you want to check with other color combinations, try the [Color Contrast Checker](#).



## Hex A93A62 Background



This preview shows how black text looks on a background with the Hex color A93A62.

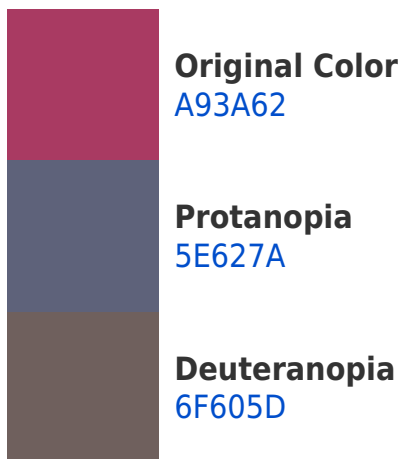


This preview shows how white text looks on a background with the Hex color A93A62.

# Color Blindness Simulation

Color vision deficiency is a very complex topic, and I could not describe the different causes any better than Wikipedia does, so if you want to learn more, you should check out their [article about color blindness](#).

## Dichromacy





**Tritanopia**  
A74044

# Trichromacy



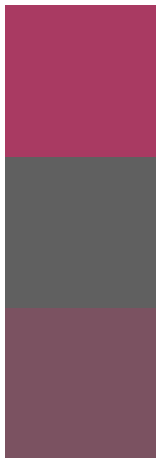
**Original Color**  
A93A62

**Protanomaly**  
795371

**Deuteranomaly**  
84525F

**Tritanomaly**  
A83E4F

# Monochromacy



**Original Color**  
A93A62

**Achromatopsia**  
606060

**Achromatomaly**  
7B5261

# CSS Examples

## Text

The CSS property to change the color of the text to Hex A93A62 is called "color". The color property can be set on classes, ids or directly on the HTML element.

This example shows how text in the color #A93A62 looks like.

```
.text, #text, p{  
    color:#A93A62  
}
```

If you want to add a text shadow in that color use the text-shadow property, you can generate a text shadow directly with our [CSS Text Shadow Generator](#).

Here you see how black text with a 4 pixel #A93A62 colored shadow looks like.

```
.shadow{ text-shadow: 4px 4px 2px #A93A62
}
```

## Border

The CSS property to change the border of an element to Hex A93A62 is called "border". The border property can be set on classes, ids or directly on the HTML element.

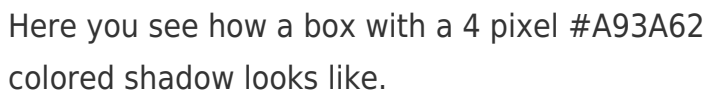
This example shows the color as border, it can be applied via the CSS property "border" or "border-color".

```
.border, #border, table{ border:4px solid
#A93A62 }
```

If only the border color should be changed use the property `border-color`.

```
.border{ border-color:#A93A62 }
```

If you want to add a box shadow in that color use:



Here you see how a box with a 4 pixel `#A93A62` colored shadow looks like.

```
.boxshadow{ -moz-box-shadow:4px 4px 4px  
4px #A93A62; -webkit-box-shadow:4px 4px  
4px 4px #A93A62; box-shadow:4px 4px 4px  
4px #A93A62 }
```

# Background

The CSS property to change the background color of an element to Hex A93A62 is called "background". The background property can be set on classes, ids or directly on the HTML element.

```
.background, #background, body{  
background:#A93A62 }
```

If only the background color should be changed can be used:

```
.background{ background-color:#A93A62 }
```

This example shows the color as background, it is applied via the CSS property "background".

To optimize and compress your CSS code, you can use our [online CSS compressor and optimizer](#) based on csstidy. If you want to create a linear or radial gradient as background or border, check our [CSS Gradient Generator](#).



Hey! You found this booklet interesting? Support Converting Colors with the new Membership Option!

The pro membership hides all ads, plus gives you double the colors in the color bucket, and more awesome pro features!

**[Learn more, Memberships starting at \\$2.50/m!](#)**

**Follow me  
on Twitter!**

@ConvertingColor