

Converting Colors

Hex(A96A4B)

Have a look what the booklet for
Hex(A96A4B) contains.

Hex(A96A4B)	3
<i>Conversions</i>	4
<i>Details</i>	6
<i>Harmonies</i>	11
<i>Previews</i>	23
<i>Color Blindness Simulation</i>	26
<i>CSS Examples</i>	29

Color

Hex(A96A4B)

Conversions

Conversions Part 1

Format	Color
Hex	A96A4B
RGB	169, 106, 75
RGB Percent	66%, 42%, 29%
CMY	0.3373, 0.5843, 0.7059
CMYK	0.00, 0.37, 0.56, 0.34
HSL	20°, 39%, 48%
HSV	20°, 56%, 66%
XYZ	22.7862, 19.2511, 9.1715
YIQ	121.3030, 47.4990, 3.7150

Conversions

Conversions Part 2

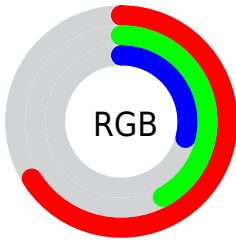
Format	Color
R _Y B	169, 121, 75
Decimal	11102795
CIE Lab	50.98, 21.90, 27.81
CIE LCh	51, 35.401, 51.776
Yxy	19.2511, 0.4450, 0.3759
Android (android.graphics.Color)	4289292875 (0xFFA96A4B)
YUV	121.3030, -22.8274, 41.8303
Hunter-Lab	43.8761, 15.9176, 18.3198

Details

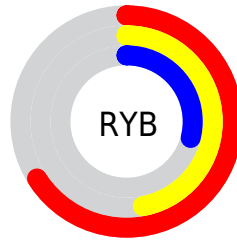
The Hex color **A96A4B** is a dark color, and the websafe version is hex **996633**. A complement of this color would be **4B8AA9**, and the grayscale version is **797979**.

A 20% lighter version of the original color is **E39E7C**, and **713A1E** is the 20% darker color. If you saturate the color by 10%, you get **A95F3A**, and if you desaturate by 10%, it is **A9755C**.

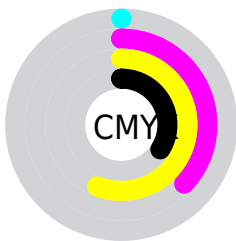
Distribution



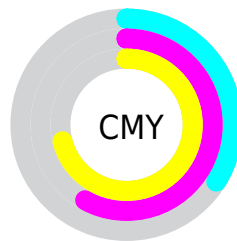
- Red (66%)
- Green (42%)
- Blue (29%)



- Red (66%)
- Yellow (47%)
- Blue (29%)



- Cyan (0%)
- Magenta (37%)
- Yellow (56%)
- Black (34%)



- Cyan (34%)
- Magenta (58%)
- Yellow (71%)

Brightness & Saturation Gradients

These gradients show how the Hex color A96A4B changes by changing the brightness by 10 percent. The first figure shows a shift by +10% for each color and the second figure -10%.

Similar to the brightness gradients but the following saturation gradients show a change of the Hex color A96A4B by changing the saturation by 10% instead.

 A96A4B

 A96A4B

FFFFFF

 8D5134

 E39E7C

 713A1E

 FFB996

 562307

 FFD5B1

 3C0D00

 FFF1CD

 260000

 FFFFE9

 000000

 A96A4B

 A96A4B

 A95F3A

 A9755C

 A95329

 A9816D

 A94818

 A98C7E

 A93D07

 A9978F

 A93800

 A9A39F

 A9AEB0

 A9B9C1

 A9C5D2

 A9D0E3

Harmonies

Analogous

The Analogous color harmony consists of three colors that are next to each other on the color wheel.



B36265



A96A4B



93753D

Triad

The Triadic color harmony groups three colors that are evenly spaced from another and form a triangle on the color wheel.



A96A4B



218970



6F75B1

Complementary

The Complementary color scheme is a pair of colors which are on the opposite of each other on the color wheel.



A96A4B



4B8AA9

Split Complementary

Split-complementary colors differ from the complementary color scheme. The scheme consists of three colors, the original color and two neighbors of the complement color.



347FB5



A96A4B



00898F

Square

The Square scheme is like the rectangle color scheme, but the four colors are evenly spaced on the color wheel.



A96A4B



538553



0086A8



97699F

Rectangle

The Rectangle color scheme consists of four colors that form a rectangle on the color wheel.



A96A4B



817B3D



0086A8



5E78B4

Sweetspot

The Sweet Spot groups the original color and five complimentary colors.



A96A4B



DBC2B6



A94B8B



6E5F58



EDEDED



6E6E6E

Same Dimension

The Same Dimension uses a secret algorithm to generate beautiful new colors.



A96A4B



DB7948



A9984B



544F4C



943100



140700

Inverse Universe

The Inverse Universe completely reimagines the original color for something new.



4B8AA9



48ABDB



4B5CA9



4C5154



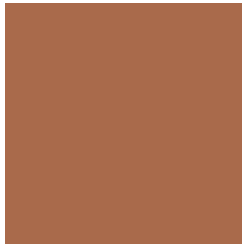
006394



000E14

Previews

White Background



This preview shows how the Hex color A96A4B looks on a white background.

Color Contrast Check

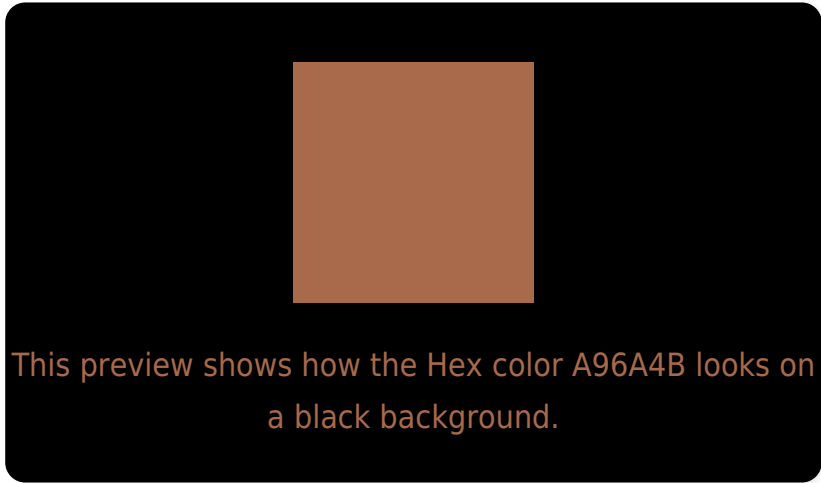
Large Text (above 18pt) WCAG AA ✓ Pass

Any Text WCAG AA × Fail

Large Text (above 18pt) WCAG AAA × Fail

Any Text WCAG AAA × Fail

Black Background



Color Contrast Check

Large Text (above 18pt) WCAG AA ✓ Pass

Any Text WCAG AA ✓ Pass

Large Text (above 18pt) WCAG AAA ✓ Pass

Any Text WCAG AAA × Fail

If you want to check with other color combinations, try the [Color Contrast Checker](#).

Hex A96A4B Background



This preview shows how black text looks on a background with the Hex color A96A4B.



This preview shows how white text looks on a background with the Hex color A96A4B.

Color Blindness Simulation

Color vision deficiency is a very complex topic, and I could not describe the different causes any better than Wikipedia does, so if you want to learn more, you should check out their [article about color blindness](#).

Dichromacy

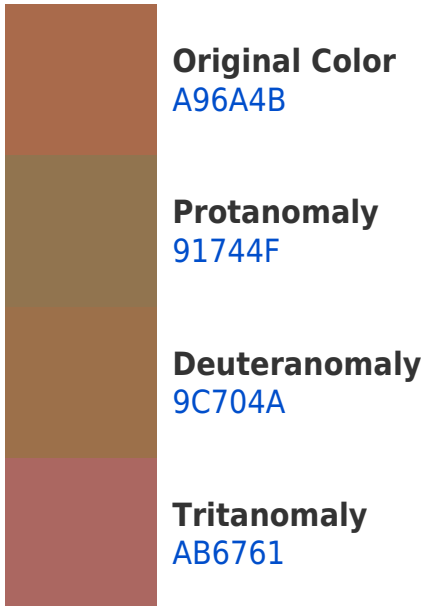


Original Color
A96A4B

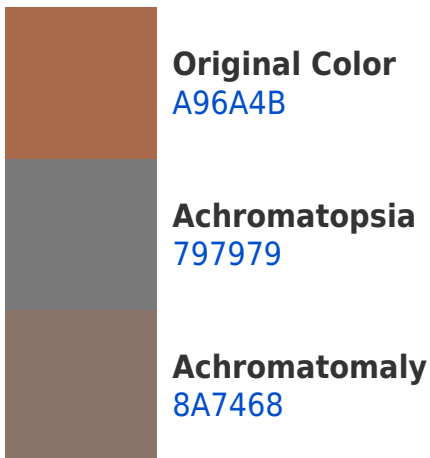
Protanopia
847A51

Deuteranopia
947449

Trichromacy



Monochromacy



CSS Examples

Text

The CSS property to change the color of the text to Hex A96A4B is called "color". The color property can be set on classes, ids or directly on the HTML element.

This example shows how text in the color #A96A4B looks like.

```
.text, #text, p{  
    color:#A96A4B  
}
```

If you want to add a text shadow in that color use the text-shadow property, you can generate a text shadow directly with our [CSS Text Shadow Generator](#).

Here you see how black text with a 4 pixel #A96A4B colored shadow looks like.

```
.shadow{ text-shadow: 4px 4px 2px #A96A4B
}
```

Border

The CSS property to change the border of an element to Hex A96A4B is called "border". The border property can be set on classes, ids or directly on the HTML element.

This example shows the color as border, it can be applied via the CSS property "border" or "border-color".

```
.border, #border, table{ border:4px solid
#A96A4B }
```

If only the border color should be changed use the property `border-color`.

```
.border{ border-color:#A96A4B }
```

If you want to add a box shadow in that color use:

Here you see how a box with a 4 pixel #A96A4B colored shadow looks like.

```
.boxshadow{ -moz-box-shadow:4px 4px 4px  
4px #A96A4B; -webkit-box-shadow:4px 4px  
4px 4px #A96A4B; box-shadow:4px 4px 4px  
4px #A96A4B }
```

Background

The CSS property to change the background color of an element to Hex A96A4B is called "background". The background property can be set on classes, ids or directly on the HTML element.

```
.background, #background, body{  
background:#A96A4B }
```

If only the background color should be changed can be used:

```
.background{ background-color:#A96A4B }
```

This example shows the color as background, it is applied via the CSS property "background".

To optimize and compress your CSS code, you can use our [online CSS compressor and optimizer](#) based on csstidy. If you want to create a linear or radial gradient as background or border, check our [CSS Gradient Generator](#).

Hey! You found this booklet interesting? Support Converting Colors with the new Membership Option!

The pro membership hides all ads, plus gives you double the colors in the color bucket, and more awesome pro features!

[Learn more, Memberships starting at \\$2.50/m!](#)

**Follow me
on Twitter!**

@ConvertingColor