

# Converting Colors

Hex(A9714A)

Have a look what the booklet for  
Hex(A9714A) contains.

<b>Hex(A9714A)</b> .....	3
<b><i>Conversions</i></b> .....	4
<b><i>Details</i></b> .....	6
<b><i>Harmonies</i></b> .....	11
<b><i>Previews</i></b> .....	23
<b><i>Color Blindness Simulation</i></b> .....	26
<b><i>CSS Examples</i></b> .....	29

**Color**

**Hex(A9714A)**

# Conversions

## Conversions Part 1

<b>Format</b>	<b>Color</b>
Hex	A9714A
RGB	169, 113, 74
RGB Percent	66%, 44%, 29%
CMY	0.3373, 0.5569, 0.7098
CMYK	0.00, 0.33, 0.56, 0.34
HSL	25°, 39%, 48%
HSV	25°, 56%, 66%
XYZ	23.5033, 20.7397, 9.2430
YIQ	125.2980, 45.8950, -0.2570

# Conversions

## Conversions Part 2

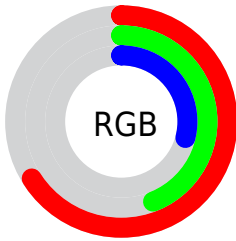
<b>Format</b>	<b>Color</b>
<b>R<sub>YB</sub></b>	169, 140, 74
Decimal	11104586
CIE <sub>Lab</sub>	52.66, 17.87, 30.49
CIE <sub>LCh</sub>	53, 35.339, 59.621
Yxy	20.7397, 0.4394, 0.3878
Android (android.graphics.Color)	4289294666 (0xFFA9714A)
YUV	125.2980, -25.2899, 38.3267
Hunter-Lab	45.5408, 12.4263, 19.8451

# Details

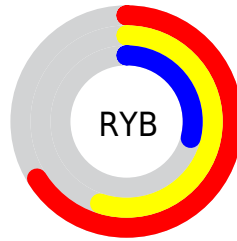
The Hex color **A9714A** is a dark color, and the websafe version is hex **996633**. A complement of this color would be **4A82A9**, and the grayscale version is **7E7E7E**.

A 20% lighter version of the original color is **E3A57B**, and **72411C** is the 20% darker color. If you saturate the color by 10%, you get **A96739**, and if you desaturate by 10%, it is **A97B5B**.

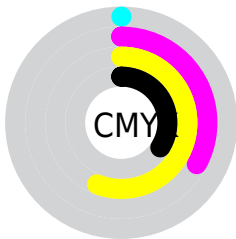
# Distribution



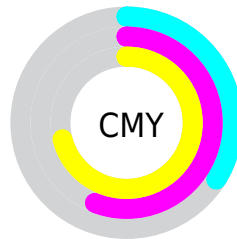
- Red (66%)
- Green (44%)
- Blue (29%)



- Red (66%)
- Yellow (55%)
- Blue (29%)



- Cyan (0%)
- Magenta (33%)
- Yellow (56%)
- Black (34%)



- Cyan (34%)
- Magenta (56%)
- Yellow (71%)

# Brightness & Saturation Gradients

These gradients show how the Hex color A9714A changes by changing the brightness by 10 percent. The first figure shows a shift by +10% for each color and the second figure -10%.

Similar to the brightness gradients but the following saturation gradients show a change of the Hex color A9714A by changing the saturation by 10% instead.



 A9714A

 A9714A

FFFFFF

 8D5833

 E3A57B

 72411C

 FFC096

 572A05

 FFDCB0

 3D1500

 FFF9CC

 250000

 FFFFEE

 000000

 A9714A

 A9714A

 A96739

 A97B5B

 A95D28

 A9856C

 A95317

 A98F7D

 A94906

 A9998E

 A94500

 A9A39E

 A9ADAF

 A9B7C0

 A9C1D1

 A9CBE2

# Harmonies

## Analogous

The Analogous color harmony consists of three colors that are next to each other on the color wheel.



B66861



A9714A



917C40

# Triad

The Triadic color harmony groups three colors that are evenly spaced from another and form a triangle on the color wheel.



A9714A



118D7C



8076B2

# Complementary

The Complementary color scheme is a pair of colors which are on the opposite of each other on the color wheel.



A9714A



4A82A9

# Split Complementary

Split-complementary colors differ from the complementary color scheme. The scheme consists of three colors, the original color and two neighbors of the complement color.



4C81BA



A9714A



008D9B

# Square

The Square scheme is like the rectangle color scheme, but the four colors are evenly spaced on the color wheel.



A9714A



4D8B5E



0089B1



A36B9D

# Rectangle

The Rectangle color scheme consists of four colors that form a rectangle on the color wheel.



A9714A



7D8243



0089B1



707AB7



# Sweetspot

The Sweet Spot groups the original color and five complimentary colors.



A9714A



DBC5B6



A94A83



6E6158



EDEDED



6E6E6E



# Same Dimension

The Same Dimension uses a secret algorithm to generate beautiful new colors.



A9714A



DB8548



A99F4A



544F4C



943D00



140800



# Inverse Universe

The Inverse Universe completely reimagines the original color for something new.



4A82A9



489FDB



4A53A9



4C5154



005794

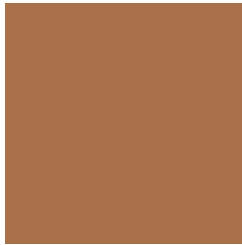


000C14



# Previews

## White Background



This preview shows how the Hex color A9714A looks on a white background.

## Color Contrast Check

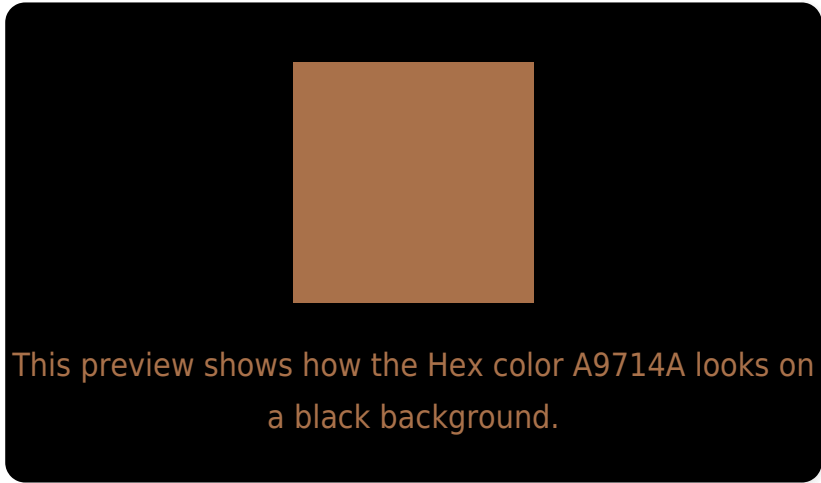
Large Text (above 18pt) WCAG AA ✓ Pass

Any Text WCAG AA ✗ Fail

Large Text (above 18pt) WCAG AAA ✗ Fail

Any Text WCAG AAA ✗ Fail

# Black Background



## Color Contrast Check

Large Text (above 18pt) WCAG AA ✓ Pass

Any Text WCAG AA ✓ Pass

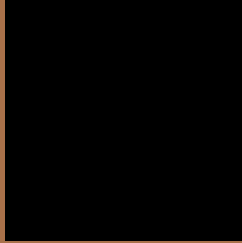
Large Text (above 18pt) WCAG AAA ✓ Pass

Any Text WCAG AAA × Fail

If you want to check with other color combinations, try the [Color Contrast Checker](#).



## Hex A9714A Background



This preview shows how black text looks on a background with the Hex color A9714A.



This preview shows how white text looks on a background with the Hex color A9714A.

# Color Blindness Simulation

Color vision deficiency is a very complex topic, and I could not describe the different causes any better than Wikipedia does, so if you want to learn more, you should check out their [article about color blindness](#).

## Dichromacy



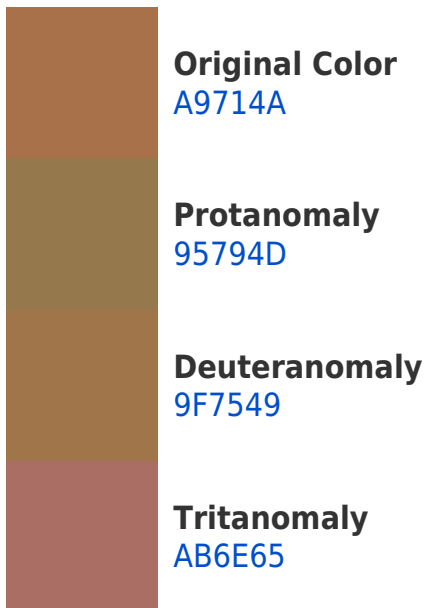
**Original Color**  
A9714A

**Protanopia**  
897E4F

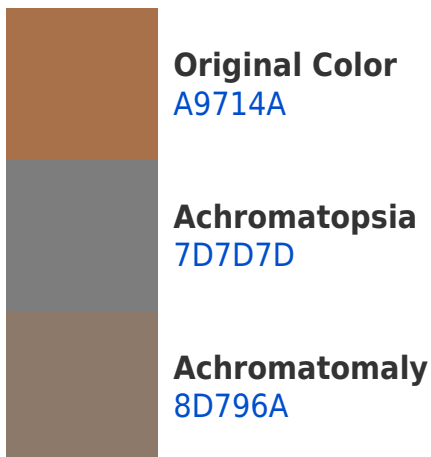
**Deuteranopia**  
9A7848



# Trichromacy



# Monochromacy



# CSS Examples

## Text

The CSS property to change the color of the text to Hex A9714A is called "color". The color property can be set on classes, ids or directly on the HTML element.

This example shows how text in the color #A9714A looks like.

```
.text, #text, p{  
    color:#A9714A  
}
```

If you want to add a text shadow in that color use the text-shadow property, you can generate a text shadow directly with our [CSS Text Shadow Generator](#).

Here you see how black text with a 4 pixel #A9714A colored shadow looks like.

```
.shadow{ text-shadow: 4px 4px 2px #A9714A
}
```

## Border

The CSS property to change the border of an element to Hex A9714A is called "border". The border property can be set on classes, ids or directly on the HTML element.

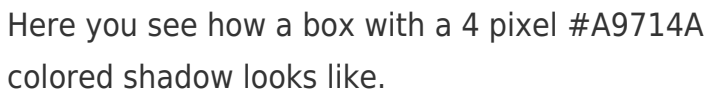
This example shows the color as border, it can be applied via the CSS property "border" or "border-color".

```
.border, #border, table{ border:4px solid
#A9714A }
```

If only the border color should be changed use the property `border-color`.

```
.border{ border-color:#A9714A }
```

If you want to add a box shadow in that color use:



Here you see how a box with a 4 pixel #A9714A colored shadow looks like.

```
.boxshadow{ -moz-box-shadow:4px 4px 4px  
4px #A9714A; -webkit-box-shadow:4px 4px  
4px 4px #A9714A; box-shadow:4px 4px 4px  
4px #A9714A }
```

# Background

The CSS property to change the background color of an element to Hex A9714A is called "background". The background property can be set on classes, ids or directly on the HTML element.

```
.background, #background, body{  
background:#A9714A }
```

If only the background color should be changed can be used:

```
.background{ background-color:#A9714A }
```

This example shows the color as background, it is applied via the CSS property "background".

To optimize and compress your CSS code, you can use our [online CSS compressor and optimizer](#) based on csstidy. If you want to create a linear or radial gradient as background or border, check our [CSS Gradient Generator](#).



Hey! You found this booklet interesting? Support Converting Colors with the new Membership Option!

The pro membership hides all ads, plus gives you double the colors in the color bucket, and more awesome pro features!

**[Learn more, Memberships starting at \\$2.50/m!](#)**

**Follow me  
on Twitter!**

@ConvertingColor