

Converting Colors

Hex(A9795F)

Have a look what the booklet for
Hex(A9795F) contains.

Hex(A9795F)	3
<i>Conversions</i>	4
<i>Details</i>	6
<i>Harmonies</i>	11
<i>Previews</i>	23
<i>Color Blindness Simulation</i>	26
<i>CSS Examples</i>	29

Color

Hex(A9795F)

Conversions

Conversions Part 1

Format	Color
Hex	A9795F
RGB	169, 121, 95
RGB Percent	66%, 47%, 37%
CMY	0.3373, 0.5255, 0.6275
CMYK	0.00, 0.28, 0.44, 0.34
HSL	21°, 30%, 52%
HSV	21°, 44%, 66%
XYZ	25.2651, 22.9360, 13.9219
YIQ	132.3880, 36.9540, 2.0900

Conversions

Conversions Part 2

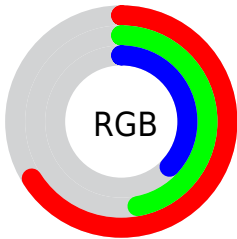
Format	Color
RYB	169, 135, 95
Decimal	11106655
CIELab	55.01, 15.43, 21.67
CIELCh	55, 26.598, 54.551
Yxy	22.9360, 0.4067, 0.3692
Android (android.graphics.Color)	4289296735 (0xFFA9795F)
YUV	132.3880, -18.4323, 32.1087
Hunter-Lab	47.8915, 10.3573, 16.2886

Details

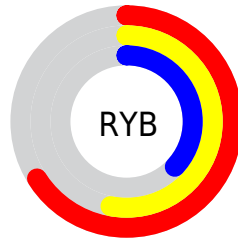
The Hex color **A9795F** is a dark color, and the websafe version is hex **996666**. A complement of this color would be **5F8FA9**, and the grayscale version is **858585**.

A 20% lighter version of the original color is **E2AD92**, and **734830** is the 20% darker color. If you saturate the color by 10%, you get **A96E4E**, and if you desaturate by 10%, it is **A98470**.

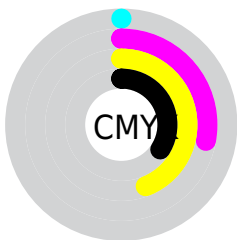
Distribution



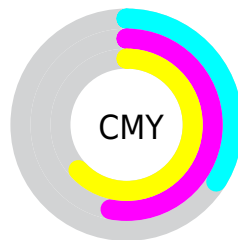
- Red (66%)
- Green (47%)
- Blue (37%)



- Red (66%)
- Yellow (53%)
- Blue (37%)



- Cyan (0%)
- Magenta (28%)
- Yellow (44%)
- Black (34%)



- Cyan (34%)
- Magenta (53%)
- Yellow (63%)

Brightness & Saturation Gradients

These gradients show how the Hex color A9795F changes by changing the brightness by 10 percent. The first figure shows a shift by +10% for each color and the second figure -10%.

Similar to the brightness gradients but the following saturation gradients show a change of the Hex color A9795F by changing the saturation by 10% instead.

 A9795F

 A9795F

FFFFFF

 8E6047

 E2AD92

 734830

 FFC9AC

 59311B

 FFE5C8

 401C02

 FFFFE4

 280500

 000000

 A9795F

 A9795F

 A96E4E

 A98470

 A9633D

 A98F81

 A9582C

 A99A92

 A94D1B

 A9A5A3

 A9420B

 A9B0B3

 A93B00

 A9BBC4

 A9C6D5

 A9D1E6

 A9DCF7

Harmonies

Analogous

The Analogous color harmony consists of three colors that are next to each other on the color wheel.



B17372



A9795F



978156

Triad

The Triadic color harmony groups three colors that are evenly spaced from another and form a triangle on the color wheel.



A9795F



4A907F



817FAD

Complementary

The Complementary color scheme is a pair of colors which are on the opposite of each other on the color wheel.



A9795F



5F8FA9

Split Complementary

Split-complementary colors differ from the complementary color scheme. The scheme consists of three colors, the original color and two neighbors of the complement color.



5E87B1



A9795F



379096

Square

The Square scheme is like the rectangle color scheme, but the four colors are evenly spaced on the color wheel.



A9795F



658D68



3F8DA8



9D779F

Rectangle

The Rectangle color scheme consists of four colors that form a rectangle on the color wheel.



A9795F



888657



3F8DA8



7682B0

Sweetspot

The Sweet Spot groups the original color and five complimentary colors.



A9795F



DBC9BF



A95F8F



6E625C



EDEDED



6E6E6E

Same Dimension

The Same Dimension uses a secret algorithm to generate beautiful new colors.



A9795F



DB9067



A99E5F



544F4C



943400



140700

Inverse Universe

The Inverse Universe completely reimagines the original color for something new.



5F8FA9



67B2DB



5F6AA9



4C5154



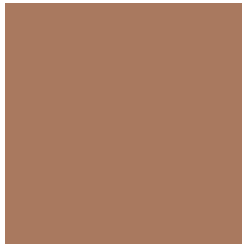
006094



000D14

Previews

White Background



This preview shows how the Hex color A9795F looks on a white background.

Color Contrast Check

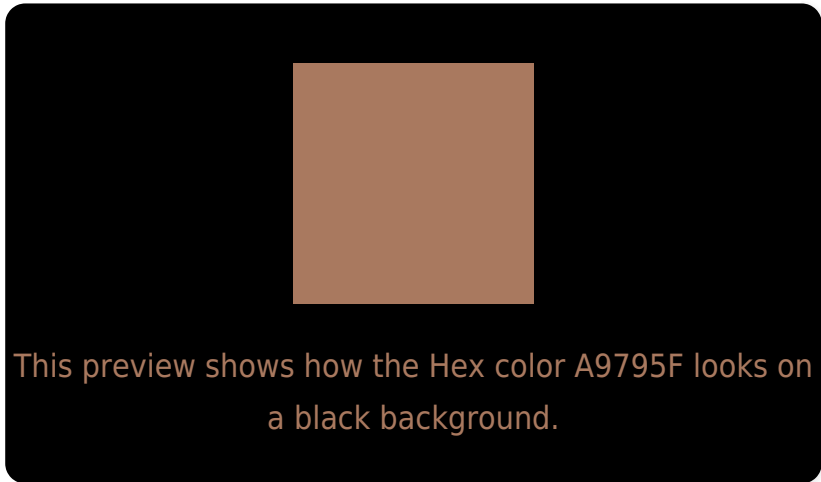
Large Text (above 18pt) WCAG AA ✓ Pass

Any Text WCAG AA × Fail

Large Text (above 18pt) WCAG AAA × Fail

Any Text WCAG AAA × Fail

Black Background



Color Contrast Check

Large Text (above 18pt) WCAG AA ✓ Pass

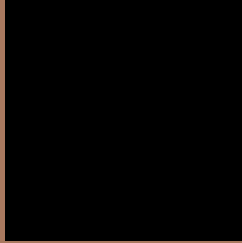
Any Text WCAG AA ✓ Pass

Large Text (above 18pt) WCAG AAA ✓ Pass

Any Text WCAG AAA × Fail

If you want to check with other color combinations, try the [Color Contrast Checker](#).

Hex A9795F Background



This preview shows how black text looks on a background with the Hex color A9795F.



This preview shows how white text looks on a background with the Hex color A9795F.

Color Blindness Simulation

Color vision deficiency is a very complex topic, and I could not describe the different causes any better than Wikipedia does, so if you want to learn more, you should check out their [article about color blindness](#).

Dichromacy



Original Color
A9795F

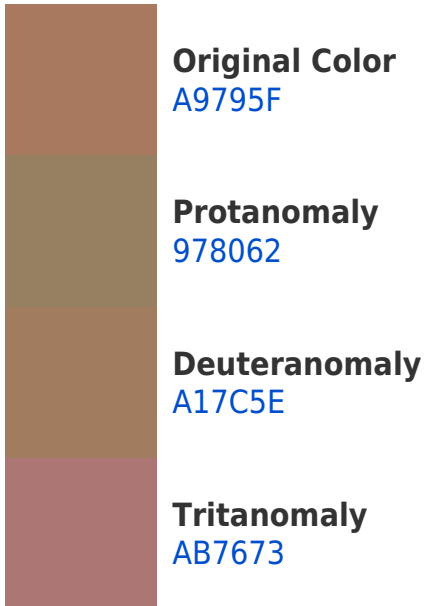
Protanopia
8D8464

Deuteranopia
9D7E5E

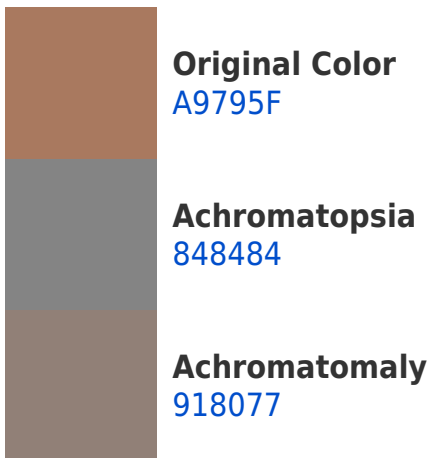


Tritanopia
AC757E

Trichromacy



Monochromacy



CSS Examples

Text

The CSS property to change the color of the text to Hex A9795F is called "color". The color property can be set on classes, ids or directly on the HTML element.

This example shows how text in the color #A9795F looks like.

```
.text, #text, p{  
    color:#A9795F  
}
```

If you want to add a text shadow in that color use the text-shadow property, you can generate a text shadow directly with our [CSS Text Shadow Generator](#).

Here you see how black text with a 4 pixel #A9795F colored shadow looks like.

```
.shadow{ text-shadow: 4px 4px 2px #A9795F
}
```

Border

The CSS property to change the border of an element to Hex A9795F is called "border". The border property can be set on classes, ids or directly on the HTML element.

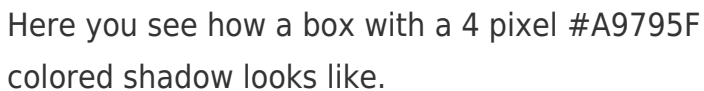
This example shows the color as border, it can be applied via the CSS property "border" or "border-color".

```
.border, #border, table{ border:4px solid
#A9795F }
```

If only the border color should be changed use the property `border-color`.

```
.border{ border-color:#A9795F }
```

If you want to add a box shadow in that color use:



Here you see how a box with a 4 pixel `#A9795F` colored shadow looks like.

```
.boxshadow{ -moz-box-shadow:4px 4px 4px  
4px #A9795F; -webkit-box-shadow:4px 4px  
4px 4px #A9795F; box-shadow:4px 4px 4px  
4px #A9795F }
```

Background

The CSS property to change the background color of an element to Hex A9795F is called "background". The background property can be set on classes, ids or directly on the HTML element.

```
.background, #background, body{  
background:#A9795F }
```

If only the background color should be changed can be used:

```
.background{ background-color:#A9795F }
```

This example shows the color as background, it is applied via the CSS property "background".

To optimize and compress your CSS code, you can use our [online CSS compressor and optimizer](#) based on csstidy. If you want to create a linear or radial gradient as background or border, check our [CSS Gradient Generator](#).

Hey! You found this booklet interesting? Support Converting Colors with the new Membership Option!

The pro membership hides all ads, plus gives you double the colors in the color bucket, and more awesome pro features!

[Learn more, Memberships starting at \\$2.50/m!](#)

**Follow me
on Twitter!**

@ConvertingColor