

# Converting Colors

Hex(A9835D)

Have a look what the booklet for  
Hex(A9835D) contains.

<b>Hex(A9835D)</b> .....	3
<b><i>Conversions</i></b> .....	4
<b><i>Details</i></b> .....	6
<b><i>Harmonies</i></b> .....	11
<b><i>Previews</i></b> .....	23
<b><i>Color Blindness Simulation</i></b> .....	26
<b><i>CSS Examples</i></b> .....	29

**Color**

**Hex(A9835D)**

# Conversions

## Conversions Part 1

<b>Format</b>	<b>Color</b>
Hex	A9835D
RGB	169, 131, 93
RGB Percent	66%, 51%, 36%
CMY	0.3373, 0.4863, 0.6353
CMYK	0.00, 0.22, 0.45, 0.34
HSL	30°, 31%, 51%
HSV	30°, 45%, 66%
XYZ	26.4543, 25.4579, 13.8755
YIQ	138.0300, 34.8460, -3.7620

# Conversions

## Conversions Part 2

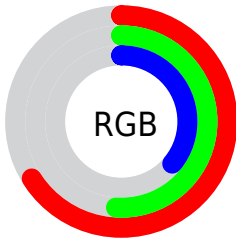
<b>Format</b>	<b>Color</b>
<b>R<sub>YB</sub></b>	169, 169, 93
Decimal	11109213
CIE <sub>Lab</sub>	57.52, 9.56, 26.11
CIE <sub>LCh</sub>	58, 27.807, 69.886
Yxy	25.4579, 0.4021, 0.3870
Android (android.graphics.Color)	4289299293 (0xFFA9835D)
YUV	138.0300, -22.1998, 27.1607
Hunter-Lab	50.4559, 5.2908, 19.0142

# Details

The Hex color **A9835D** is a dark color, and the websafe version is hex **CC9966**. A complement of this color would be **5D83A9**, and the grayscale version is **8A8A8A**.

A 20% lighter version of the original color is **E2B890**, and **73522E** is the 20% darker color. If you saturate the color by 10%, you get **A97B4C**, and if you desaturate by 10%, it is **A98B6E**.

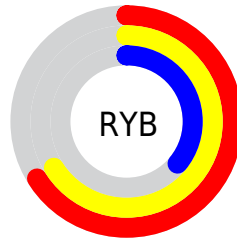
# Distribution



Red (66%)

Green (51%)

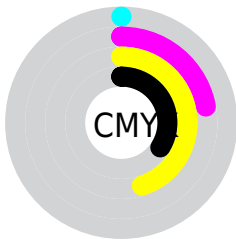
Blue (36%)



Red (66%)

Yellow (66%)

Blue (36%)

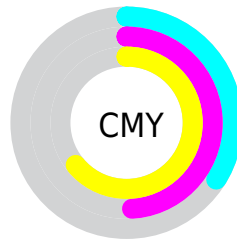


Cyan (0%)

Magenta (22%)

Yellow (45%)

Black (34%)



Cyan (34%)

Magenta (49%)

Yellow (64%)

# Brightness & Saturation Gradients

These gradients show how the Hex color A9835D changes by changing the brightness by 10 percent. The first figure shows a shift by +10% for each color and the second figure -10%.

Similar to the brightness gradients but the following saturation gradients show a change of the Hex color A9835D by changing the saturation by 10% instead.



 A9835D

 A9835D

FFFFFF

 8E6A45

 E2B890

 73522E

 FFD4AA

 593B18

 FFF0C6

 402500

 FFFFE2

 281100

 000000

 A9835D

 A9835D

 A97B4C

 A98B6E

 A9723B

 A9947F

 A96A2A

 A99C90

 A96119

 A9A5A1

 A95909

 A9ADB1

 A95400

 A9B6C2

 A9BED3

 A9C7E4

 A9CFF5

# Harmonies

## Analogous

The Analogous color harmony consists of three colors that are next to each other on the color wheel.



B77B6C



A9835D



938B5A

# Triad

The Triadic color harmony groups three colors that are evenly spaced from another and form a triangle on the color wheel.



A9835D



419792



9881AF

# Complementary

The Complementary color scheme is a pair of colors which are on the opposite of each other on the color wheel.



A9835D



5D83A9

# Split Complementary

Split-complementary colors differ from the complementary color scheme. The scheme consists of three colors, the original color and two neighbors of the complement color.



768ABA



A9835D



3896A8

# Square

The Square scheme is like the rectangle color scheme, but the four colors are evenly spaced on the color wheel.



A9835D



5B9679



5191B7



AF7A9B

# Rectangle

The Rectangle color scheme consists of four colors that form a rectangle on the color wheel.



A9835D



81905F



5191B7



8D84B4



# Sweetspot

The Sweet Spot groups the original color and five complimentary colors.



A9835D



DBCDBF



A95D83



6E655C



EDEDED



6E6E6E



# Same Dimension

The Same Dimension uses a secret algorithm to generate beautiful new colors.



A9835D



DBA065



A9A85D



54504C



944A00



140A00



# Inverse Universe

The Inverse Universe completely reimagines the original color for something new.



5D83A9



65A0DB



5D5DA9



4C5054



004A94

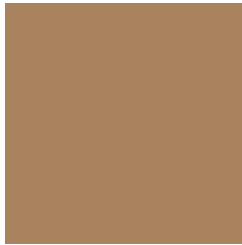


000A14



# Previews

## White Background



This preview shows how the Hex color A9835D looks on a white background.

## Color Contrast Check

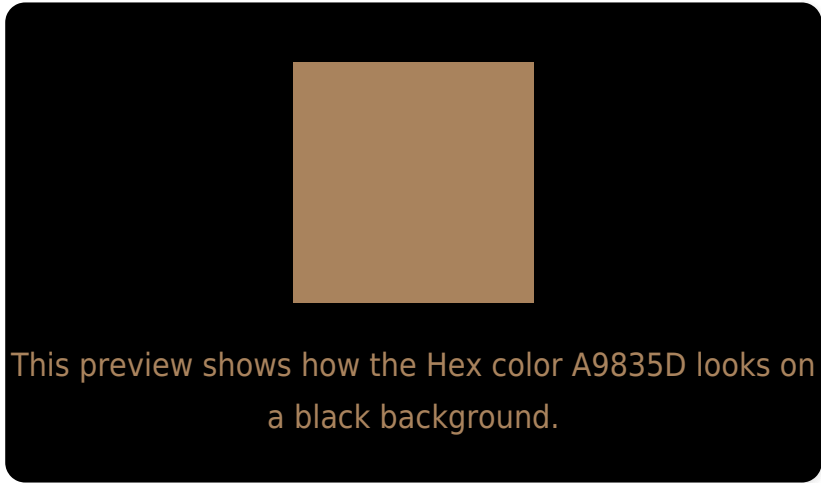
Large Text (above 18pt) WCAG AA ✓ Pass

Any Text WCAG AA × Fail

Large Text (above 18pt) WCAG AAA × Fail

Any Text WCAG AAA × Fail

# Black Background



## Color Contrast Check

Large Text (above 18pt) WCAG AA ✓ Pass

Any Text WCAG AA ✓ Pass

Large Text (above 18pt) WCAG AAA ✓ Pass

Any Text WCAG AAA × Fail

If you want to check with other color combinations, try the [Color Contrast Checker](#).



## Hex A9835D Background



This preview shows how black text looks on a background with the Hex color A9835D.



This preview shows how white text looks on a background with the Hex color A9835D.

# Color Blindness Simulation

Color vision deficiency is a very complex topic, and I could not describe the different causes any better than Wikipedia does, so if you want to learn more, you should check out their [article about color blindness](#).

## Dichromacy



**Original Color**  
A9835D

**Protanopia**  
968A60

**Deuteranopia**  
A6845D



**Tritanopia**  
AD7E87

# Trichromacy



**Original Color**  
A9835D

**Protanomaly**  
9D875F

**Deuteranomaly**  
A7845D

**Tritanomaly**  
AC8078

# Monochromacy



**Original Color**  
A9835D

**Achromatopsia**  
8A8A8A

**Achromatomaly**  
95877A

# CSS Examples

## Text

The CSS property to change the color of the text to Hex A9835D is called "color". The color property can be set on classes, ids or directly on the HTML element.

This example shows how text in the color #A9835D looks like.

```
.text, #text, p{  
    color:#A9835D  
}
```

If you want to add a text shadow in that color use the text-shadow property, you can generate a text shadow directly with our [CSS Text Shadow Generator](#).

Here you see how black text with a 4 pixel #A9835D colored shadow looks like.

```
.shadow{ text-shadow: 4px 4px 2px #A9835D
}
```

## Border

The CSS property to change the border of an element to Hex A9835D is called "border". The border property can be set on classes, ids or directly on the HTML element.

This example shows the color as border, it can be applied via the CSS property "border" or "border-color".

```
.border, #border, table{ border:4px solid
#A9835D }
```

If only the border color should be changed use the property `border-color`.

```
.border{ border-color:#A9835D }
```

If you want to add a box shadow in that color use:

Here you see how a box with a 4 pixel #A9835D colored shadow looks like.

```
.boxshadow{ -moz-box-shadow:4px 4px 4px  
4px #A9835D; -webkit-box-shadow:4px 4px  
4px 4px #A9835D; box-shadow:4px 4px 4px  
4px #A9835D }
```

# Background

The CSS property to change the background color of an element to Hex A9835D is called "background". The background property can be set on classes, ids or directly on the HTML element.

```
.background, #background, body{  
background:#A9835D }
```

If only the background color should be changed can be used:

```
.background{ background-color:#A9835D }
```

This example shows the color as background, it is applied via the CSS property "background".

To optimize and compress your CSS code, you can use our [online CSS compressor and optimizer](#) based on csstidy. If you want to create a linear or radial gradient as background or border, check our [CSS Gradient Generator](#).



Hey! You found this booklet interesting? Support Converting Colors with the new Membership Option!

The pro membership hides all ads, plus gives you double the colors in the color bucket, and more awesome pro features!

**[Learn more, Memberships starting at \\$2.50/m!](#)**

**Follow me  
on Twitter!**

@ConvertingColor