

# Converting Colors

Hex(A98C79)

Have a look what the booklet for  
Hex(A98C79) contains.

<b>Hex(A98C79)</b> .....	3
<b><i>Conversions</i></b> .....	4
<b><i>Details</i></b> .....	6
<b><i>Harmonies</i></b> .....	11
<b><i>Previews</i></b> .....	23
<b><i>Color Blindness Simulation</i></b> .....	26
<b><i>CSS Examples</i></b> .....	29

**Color**

**Hex(A98C79)**

# Conversions

## Conversions Part 1

<b>Format</b>	<b>Color</b>
Hex	A98C79
RGB	169, 140, 121
RGB Percent	66%, 55%, 47%
CMY	0.3373, 0.4510, 0.5255
CMYK	0.00, 0.17, 0.28, 0.34
HSL	24°, 22%, 57%
HSV	24°, 28%, 66%
XYZ	29.1915, 28.5717, 22.0655
YIQ	146.5050, 23.3830, 0.2390

# Conversions

## Conversions Part 2

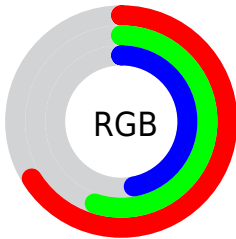
<b>Format</b>	<b>Color</b>
<b>RYB</b>	169, 152, 121
Decimal	11111545
CIELab	60.40, 8.03, 14.25
CIElCh	60, 16.357, 60.606
Yxy	28.5717, 0.3657, 0.3579
Android (android.graphics.Color)	4289301625 (0xFFA98C79)
YUV	146.5050, -12.5740, 19.7281
Hunter-Lab	53.4525, 3.9406, 12.9415

# Details

The Hex color **A98C79** is a dark color, and the websafe version is hex **CC9999**. A complement of this color would be **7996A9**, and the grayscale version is **939393**.

A 20% lighter version of the original color is **E1C2AD**, and **745A48** is the 20% darker color. If you saturate the color by 10%, you get **A98268**, and if you desaturate by 10%, it is **A9968A**.

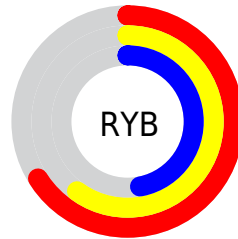
# Distribution



Red (66%)

Green (55%)

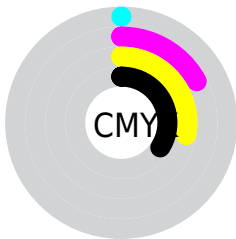
Blue (47%)



Red (66%)

Yellow (60%)

Blue (47%)

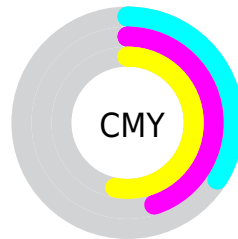


Cyan (0%)

Magenta (17%)

Yellow (28%)

Black (34%)



Cyan (34%)

Magenta (45%)

Yellow (53%)

# Brightness & Saturation Gradients

These gradients show how the Hex color A98C79 changes by changing the brightness by 10 percent. The first figure shows a shift by +10% for each color and the second figure -10%.

Similar to the brightness gradients but the following saturation gradients show a change of the Hex color A98C79 by changing the saturation by 10% instead.





A98C79



A98C79

FFFFFF



8E7260



E1C2AD



745A48



FEDDC9



5B4332



FFFAE5



432C1D



2C1804



140000



000000



A98C79



A98C79



A98268



A9968A

 A97857


 A9A09B

 A96D46

 A9ABAC

 A96335

 A9B5BD

 A95924

 A9BFCD

 A94F14

 A9C9DE

 A94503

 A9D3EF

 A94300

 A9DEFF

 A9E8FF

# Harmonies

## Analogous

The Analogous color harmony consists of three colors that are next to each other on the color wheel.



AF8984



A98C79



9D9175

# Triad

The Triadic color harmony groups three colors that are evenly spaced from another and form a triangle on the color wheel.



A98C79



6F9A91



958EAA

# Complementary

The Complementary color scheme is a pair of colors which are on the opposite of each other on the color wheel.



A98C79



7996A9

# Split Complementary

Split-complementary colors differ from the complementary color scheme. The scheme consists of three colors, the original color and two neighbors of the complement color.



8293AE



A98C79



6B99A0

# Square

The Square scheme is like the rectangle color scheme, but the four colors are evenly spaced on the color wheel.



A98C79



7C9883



7297AA



A58AA0

# Rectangle

The Rectangle color scheme consists of four colors that form a rectangle on the color wheel.



A98C79



929477



7297AA



8E8FAC



# Sweetspot

The Sweet Spot groups the original color and five complimentary colors.



A98C79



DBCFC8



A97997



6E6662



EDEDED



6E6E6E



# Same Dimension

The Same Dimension uses a secret algorithm to generate beautiful new colors.



A98C79



DBAE91



A9A379



544F4C



943B00



140800



# Inverse Universe

The Inverse Universe completely reimagines the original color for something new.



7996A9



91BEDB



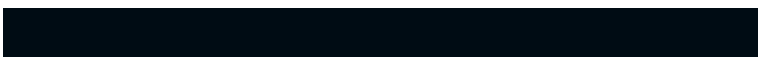
797FA9



4C5154



005994

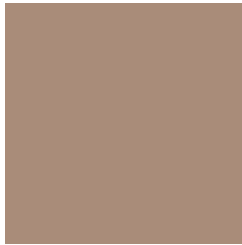


000C14



# Previews

## White Background



This preview shows how the Hex color A98C79 looks on a white background.

## Color Contrast Check

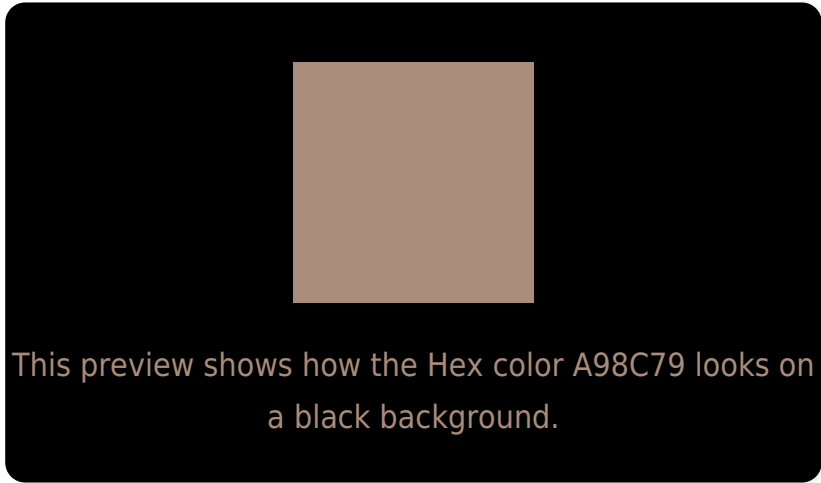
Large Text (above 18pt) WCAG AA ✓ Pass

Any Text WCAG AA × Fail

Large Text (above 18pt) WCAG AAA × Fail

Any Text WCAG AAA × Fail

# Black Background



## Color Contrast Check

Large Text (above 18pt) WCAG AA ✓ Pass

Any Text WCAG AA ✓ Pass

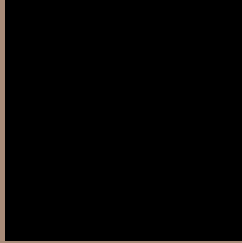
Large Text (above 18pt) WCAG AAA ✓ Pass

Any Text WCAG AAA × Fail

If you want to check with other color combinations, try the [Color Contrast Checker](#).



## Hex A98C79 Background



This preview shows how black text looks on a background with the Hex color A98C79.



This preview shows how white text looks on a background with the Hex color A98C79.

# Color Blindness Simulation

Color vision deficiency is a very complex topic, and I could not describe the different causes any better than Wikipedia does, so if you want to learn more, you should check out their [article about color blindness](#).

## Dichromacy



**Original Color**  
A98C79

**Protanopia**  
99917C

**Deuteranopia**  
A98C79



# Trichromacy



**Original Color**  
A98C79

**Protanomaly**  
9F8F7B

**Deuteranomaly**  
A98C79

**Tritanomaly**  
AB898A

# Monochromacy



**Original Color**  
A98C79

**Achromatopsia**  
939393

**Achromatomaly**  
9B908A

# CSS Examples

## Text

The CSS property to change the color of the text to Hex A98C79 is called "color". The color property can be set on classes, ids or directly on the HTML element.

This example shows how text in the color #A98C79 looks like.

```
.text, #text, p{  
    color:#A98C79  
}
```

If you want to add a text shadow in that color use the text-shadow property, you can generate a text shadow directly with our [CSS Text Shadow Generator](#).

Here you see how black text with a 4 pixel #A98C79 colored shadow looks like.

```
.shadow{ text-shadow: 4px 4px 2px #A98C79
}
```

## Border

The CSS property to change the border of an element to Hex A98C79 is called "border". The border property can be set on classes, ids or directly on the HTML element.

This example shows the color as border, it can be applied via the CSS property "border" or "border-color".

```
.border, #border, table{ border:4px solid
#A98C79 }
```

If only the border color should be changed use the property `border-color`.

```
.border{ border-color:#A98C79 }
```

If you want to add a box shadow in that color use:

Here you see how a box with a 4 pixel #A98C79 colored shadow looks like.

```
.boxshadow{ -moz-box-shadow:4px 4px 4px  
4px #A98C79; -webkit-box-shadow:4px 4px  
4px 4px #A98C79; box-shadow:4px 4px 4px  
4px #A98C79 }
```

# Background

The CSS property to change the background color of an element to Hex A98C79 is called "background". The background property can be set on classes, ids or directly on the HTML element.

```
.background, #background, body{  
background:#A98C79 }
```

If only the background color should be changed can be used:

```
.background{ background-color:#A98C79 }
```

This example shows the color as background, it is applied via the CSS property "background".

To optimize and compress your CSS code, you can use our [online CSS compressor and optimizer](#) based on csstidy. If you want to create a linear or radial gradient as background or border, check our [CSS Gradient Generator](#).



Hey! You found this booklet interesting? Support Converting Colors with the new Membership Option!

The pro membership hides all ads, plus gives you double the colors in the color bucket, and more awesome pro features!

**[Learn more, Memberships starting at \\$2.50/m!](#)**

**Follow me  
on Twitter!**

@ConvertingColor