

Converting Colors

Hex(A98F76)

Have a look what the booklet for
Hex(A98F76) contains.

Hex(A98F76)	3
<i>Conversions</i>	4
<i>Details</i>	6
<i>Harmonies</i>	11
<i>Previews</i>	23
<i>Color Blindness Simulation</i>	26
<i>CSS Examples</i>	29

Color

Hex(A98F76)

Conversions

Conversions Part 1

Format	Color
Hex	A98F76
RGB	169, 143, 118
RGB Percent	66%, 56%, 46%
CMY	0.3373, 0.4392, 0.5373
CMYK	0.00, 0.15, 0.30, 0.34
HSL	29°, 23%, 56%
HSV	29°, 30%, 66%
XYZ	29.4547, 29.3879, 21.2596
YIQ	147.9240, 23.5210, -2.2630

Conversions

Conversions Part 2

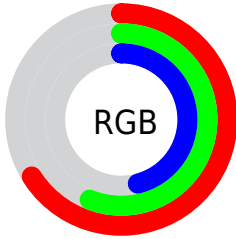
Format	Color
R_{YB}	169, 167, 118
Decimal	11112310
CIE _{Lab}	61.12, 5.93, 16.94
CIE _{LCh}	61, 17.951, 70.702
Yxy	29.3879, 0.3677, 0.3669
Android (android.graphics.Color)	4289302390 (0xFFA98F76)
YUV	147.9240, -14.7525, 18.4837
Hunter-Lab	54.2106, 2.1171, 14.6960

Details

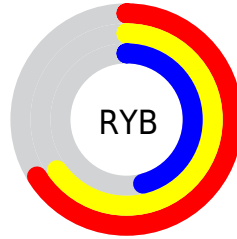
The Hex color **A98F76** is a dark color, and the websafe version is hex **999966**. A complement of this color would be **7690A9**, and the grayscale version is **949494**.

A 20% lighter version of the original color is **E1C5AA**, and **745D46** is the 20% darker color. If you saturate the color by 10%, you get **A98665**, and if you desaturate by 10%, it is **A99887**.

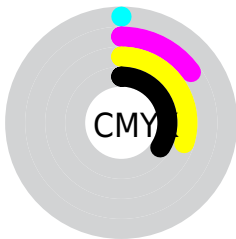
Distribution



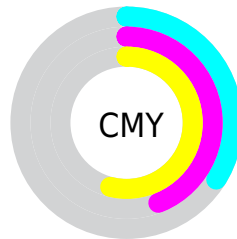
- Red (66%)
- Green (56%)
- Blue (46%)



- Red (66%)
- Yellow (65%)
- Blue (46%)



- Cyan (0%)
- Magenta (15%)
- Yellow (30%)
- Black (34%)



- Cyan (34%)
- Magenta (44%)
- Yellow (54%)

Brightness & Saturation Gradients

These gradients show how the Hex color A98F76 changes by changing the brightness by 10 percent. The first figure shows a shift by +10% for each color and the second figure -10%.

Similar to the brightness gradients but the following saturation gradients show a change of the Hex color A98F76 by changing the saturation by 10% instead.

 A98F76

 A98F76

FFFFFF

 8E755D

 E1C5AA

 745D46

 FEE1C6

 5B452F

 FFFDE2

 422F1A

FFFFFFE

 2C1A00

 130000

 000000

 A98F76

 A98F76

 A98665

 A99887

 A97E54

 A9A098

 A97543

 A9A9A9

 A96D32

 A9B1BA

 A96421

 A9BACA

 A95B11

 A9C3DB

 A95300

 A9CBEC

 A9D4FD

 A9DDFF

Harmonies

Analogous

The Analogous color harmony consists of three colors that are next to each other on the color wheel.



B38A80



A98F76



9A9474

Triad

The Triadic color harmony groups three colors that are evenly spaced from another and form a triangle on the color wheel.



A98F76



6A9D99



9D8EAC

Complementary

The Complementary color scheme is a pair of colors which are on the opposite of each other on the color wheel.



A98F76



7690A9

Split Complementary

Split-complementary colors differ from the complementary color scheme. The scheme consists of three colors, the original color and two neighbors of the complement color.



8993B2



A98F76



699BA8

Square

The Square scheme is like the rectangle color scheme, but the four colors are evenly spaced on the color wheel.



A98F76



779C89



7598B1



AD8A9E

Rectangle

The Rectangle color scheme consists of four colors that form a rectangle on the color wheel.



A98F76



8E9778



7598B1



978FAF

Sweetspot

The Sweet Spot groups the original color and five complimentary colors.



A98F76



DBD1C8



A97690



6E6862



EDEDED



6E6E6E

Same Dimension

The Same Dimension uses a secret algorithm to generate beautiful new colors.



A98F76



DBB38C



A9A876



54504C



944900



140A00

Inverse Universe

The Inverse Universe completely reimagines the original color for something new.



7690A9



8CB5DB



7677A9



4C5054



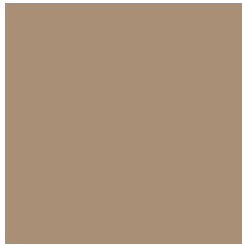
004B94



000A14

Previews

White Background



This preview shows how the Hex color A98F76 looks on a white background.

Color Contrast Check

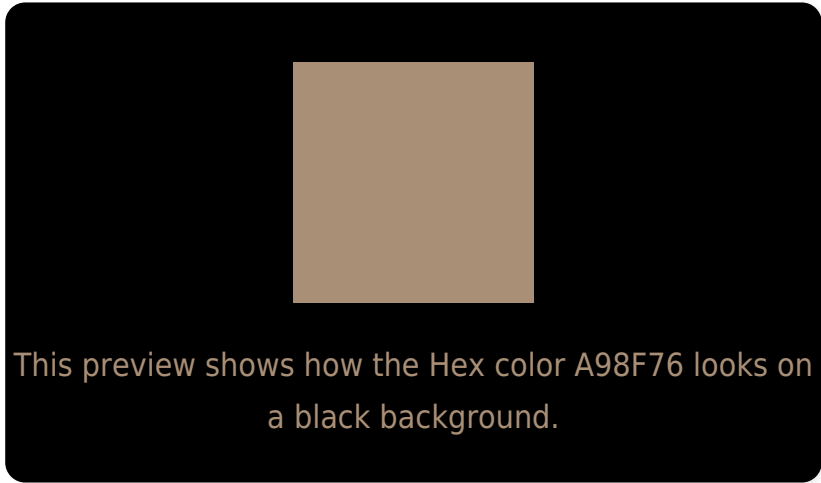
Large Text (above 18pt) WCAG AA ✓ Pass

Any Text WCAG AA × Fail

Large Text (above 18pt) WCAG AAA × Fail

Any Text WCAG AAA × Fail

Black Background



Color Contrast Check

Large Text (above 18pt) WCAG AA ✓ Pass

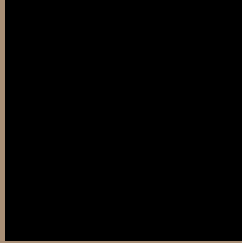
Any Text WCAG AA ✓ Pass

Large Text (above 18pt) WCAG AAA ✓ Pass

Any Text WCAG AAA × Fail

If you want to check with other color combinations, try the [Color Contrast Checker](#).

Hex A98F76 Background



This preview shows how black text looks on a background with the Hex color A98F76.

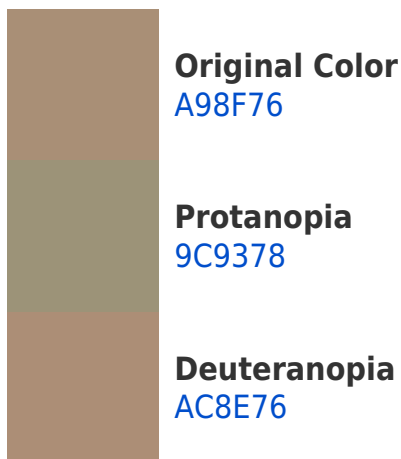


This preview shows how white text looks on a background with the Hex color A98F76.

Color Blindness Simulation

Color vision deficiency is a very complex topic, and I could not describe the different causes any better than Wikipedia does, so if you want to learn more, you should check out their [article about color blindness](#).

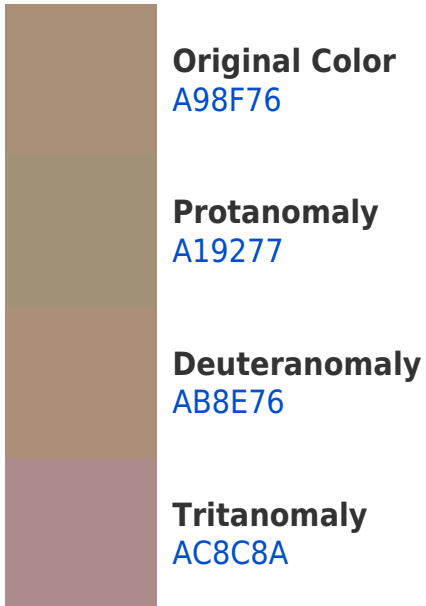
Dichromacy



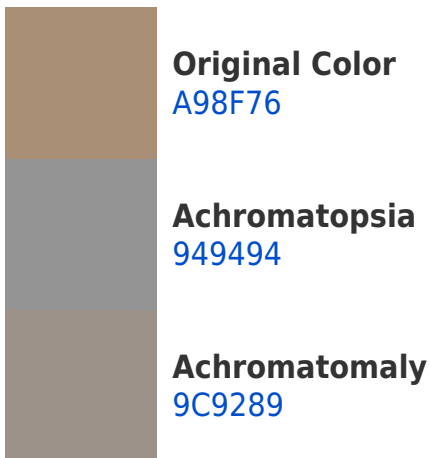


Tritanopia
AD8B95

Trichromacy



Monochromacy



CSS Examples

Text

The CSS property to change the color of the text to Hex A98F76 is called "color". The color property can be set on classes, ids or directly on the HTML element.

This example shows how text in the color #A98F76 looks like.

```
.text, #text, p{  
    color:#A98F76  
}
```

If you want to add a text shadow in that color use the text-shadow property, you can generate a text shadow directly with our [CSS Text Shadow Generator](#).

Here you see how black text with a 4 pixel #A98F76 colored shadow looks like.

```
.shadow{ text-shadow: 4px 4px 2px #A98F76
}
```

Border

The CSS property to change the border of an element to Hex A98F76 is called "border". The border property can be set on classes, ids or directly on the HTML element.

This example shows the color as border, it can be applied via the CSS property "border" or "border-color".

```
.border, #border, table{ border:4px solid
#A98F76 }
```

If only the border color should be changed use the property `border-color`.

```
.border{ border-color:#A98F76 }
```

If you want to add a box shadow in that color use:

Here you see how a box with a 4 pixel #A98F76 colored shadow looks like.

```
.boxshadow{ -moz-box-shadow:4px 4px 4px  
4px #A98F76; -webkit-box-shadow:4px 4px  
4px 4px #A98F76; box-shadow:4px 4px 4px  
4px #A98F76 }
```

Background

The CSS property to change the background color of an element to Hex A98F76 is called "background". The background property can be set on classes, ids or directly on the HTML element.

```
.background, #background, body{  
background:#A98F76 }
```

If only the background color should be changed can be used:

```
.background{ background-color:#A98F76 }
```

This example shows the color as background, it is applied via the CSS property "background".

To optimize and compress your CSS code, you can use our [online CSS compressor and optimizer](#) based on csstidy. If you want to create a linear or radial gradient as background or border, check our [CSS Gradient Generator](#).

Hey! You found this booklet interesting? Support Converting Colors with the new Membership Option!

The pro membership hides all ads, plus gives you double the colors in the color bucket, and more awesome pro features!

[Learn more, Memberships starting at \\$2.50/m!](#)

**Follow me
on Twitter!**

@ConvertingColor