

Converting Colors

Hex(A98F7E)

Have a look what the booklet for
Hex(A98F7E) contains.

Hex(A98F7E)	3
<i>Conversions</i>	4
<i>Details</i>	6
<i>Harmonies</i>	11
<i>Previews</i>	23
<i>Color Blindness Simulation</i>	26
<i>CSS Examples</i>	29

Color

Hex(A98F7E)

Conversions

Conversions Part 1

Format	Color
Hex	A98F7E
RGB	169, 143, 126
RGB Percent	66%, 56%, 49%
CMY	0.3373, 0.4392, 0.5059
CMYK	0.00, 0.15, 0.25, 0.34
HSL	24°, 20%, 58%
HSV	24°, 25%, 66%
XYZ	29.9505, 29.5863, 23.8708
YIQ	148.8360, 20.9530, 0.2250

Conversions

Conversions Part 2

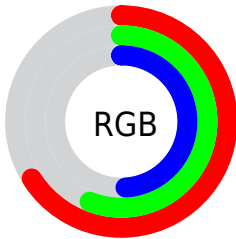
Format	Color
R_{YB}	169, 154, 126
Decimal	11112318
CIE _{Lab}	61.30, 7.07, 12.67
CIE _{LCh}	61, 14.513, 60.827
Yxy	29.5863, 0.3591, 0.3547
Android (android.graphics.Color)	4289302398 (0xFFA98F7E)
YUV	148.8360, -11.2581, 17.6838
Hunter-Lab	54.3933, 3.0991, 12.0555

Details

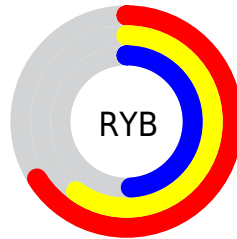
The Hex color **A98F7E** is a dark color, and the websafe version is hex **999999**. A complement of this color would be **7E98A9**, and the grayscale version is **959595**.

A 20% lighter version of the original color is **E1C5B3**, and **745D4D** is the 20% darker color. If you saturate the color by 10%, you get **A9856D**, and if you desaturate by 10%, it is **A9998F**.

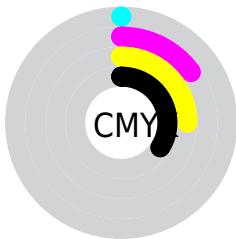
Distribution



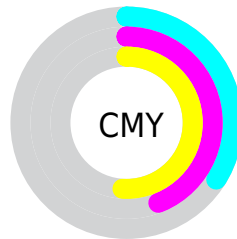
- Red (66%)
- Green (56%)
- Blue (49%)



- Red (66%)
- Yellow (60%)
- Blue (49%)



- Cyan (0%)
- Magenta (15%)
- Yellow (25%)
- Black (34%)



- Cyan (34%)
- Magenta (44%)
- Yellow (51%)

Brightness & Saturation Gradients

These gradients show how the Hex color A98F7E changes by changing the brightness by 10 percent. The first figure shows a shift by +10% for each color and the second figure -10%.

Similar to the brightness gradients but the following saturation gradients show a change of the Hex color A98F7E by changing the saturation by 10% instead.

 A98F7E

 A98F7E

FFFFFF

 8E7565

 E1C5B3

 745D4D

 FEE1CE

 5B4536

 FFFDEA

 432F21

 2C1A0B

 160000

 000000

 A98F7E

 A98F7E

 A9856D

 A9998F

 A97B5C

 A9A3A0

 A9704B


 A9AEB1

 A9663A

 A9B8C2

 A95C29

 A9C2D2

 A95219

 A9CCE3

 A94708

 A9D7F4

 A94300

 A9E1FF

 A9EBFF

Harmonies

Analogous

The Analogous color harmony consists of three colors that are next to each other on the color wheel.



AF8C87



A98F7E



9E937A

Triad

The Triadic color harmony groups three colors that are evenly spaced from another and form a triangle on the color wheel.



A98F7E



769B94



9791AA

Complementary

The Complementary color scheme is a pair of colors which are on the opposite of each other on the color wheel.



A98F7E



7E98A9

Split Complementary

Split-complementary colors differ from the complementary color scheme. The scheme consists of three colors, the original color and two neighbors of the complement color.



8695AD



A98F7E



729BA1

Square

The Square scheme is like the rectangle color scheme, but the four colors are evenly spaced on the color wheel.



A98F7E



819A87



7899AA



A58DA1

Rectangle

The Rectangle color scheme consists of four colors that form a rectangle on the color wheel.



A98F7E



95967C



7899AA



9192AC

Sweetspot

The Sweet Spot groups the original color and five complimentary colors.



A98F7E



DBD1CA



A97E99



6E6763



EDEDED



6E6E6E

Same Dimension

The Same Dimension uses a secret algorithm to generate beautiful new colors.



A98F7E



DBB297



A9A47E



544F4C



943A00



140800

Inverse Universe

The Inverse Universe completely reimagines the original color for something new.



7E98A9



97C0DB



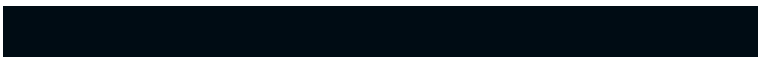
7E83A9



4C5154



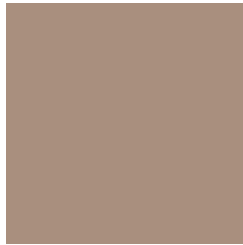
005994



000C14

Previews

White Background



This preview shows how the Hex color A98F7E looks on a white background.

Color Contrast Check

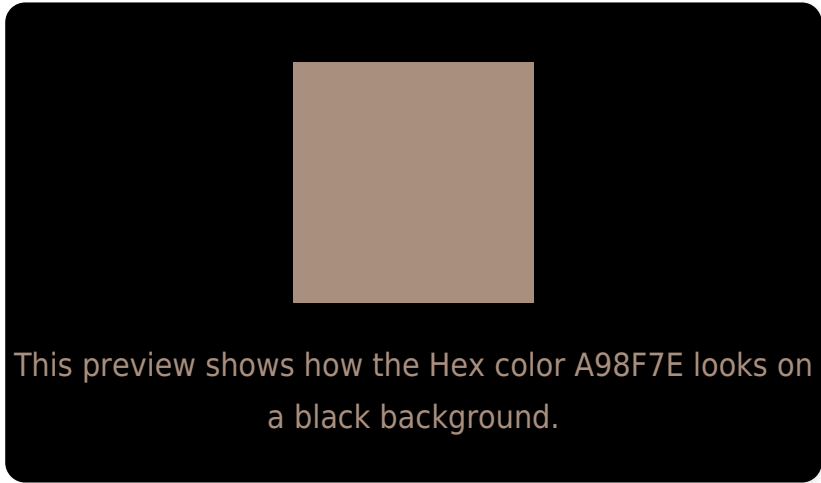
Large Text (above 18pt) WCAG AA ✓ Pass

Any Text WCAG AA × Fail

Large Text (above 18pt) WCAG AAA × Fail

Any Text WCAG AAA × Fail

Black Background



Color Contrast Check

Large Text (above 18pt) WCAG AA ✓ Pass

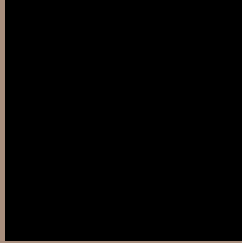
Any Text WCAG AA ✓ Pass

Large Text (above 18pt) WCAG AAA ✓ Pass

Any Text WCAG AAA × Fail

If you want to check with other color combinations, try the [Color Contrast Checker](#).

Hex A98F7E Background



This preview shows how black text looks on a background with the Hex color A98F7E.



This preview shows how white text looks on a background with the Hex color A98F7E.

Color Blindness Simulation

Color vision deficiency is a very complex topic, and I could not describe the different causes any better than Wikipedia does, so if you want to learn more, you should check out their [article about color blindness](#).

Dichromacy



Original Color
A98F7E

Protanopia
9B9480

Deuteranopia
AA8F7E



Tritanopia
AC8B96

Trichromacy



Original Color
A98F7E

Protanomaly
A0927F

Deuteranomaly
AA8F7E

Tritanomaly
AB8C8D

Monochromacy



Original Color
A98F7E

Achromatopsia
959595

Achromatomaly
9C938D

CSS Examples

Text

The CSS property to change the color of the text to Hex A98F7E is called "color". The color property can be set on classes, ids or directly on the HTML element.

This example shows how text in the color #A98F7E looks like.

```
.text, #text, p{  
    color:#A98F7E  
}
```

If you want to add a text shadow in that color use the text-shadow property, you can generate a text shadow directly with our [CSS Text Shadow Generator](#).

Here you see how black text with a 4 pixel #A98F7E colored shadow looks like.

```
.shadow{ text-shadow: 4px 4px 2px #A98F7E
}
```

Border

The CSS property to change the border of an element to Hex A98F7E is called "border". The border property can be set on classes, ids or directly on the HTML element.

This example shows the color as border, it can be applied via the CSS property "border" or "border-color".

```
.border, #border, table{ border:4px solid
#A98F7E }
```

If only the border color should be changed use the property `border-color`.

```
.border{ border-color:#A98F7E }
```

If you want to add a box shadow in that color use:

Here you see how a box with a 4 pixel #A98F7E colored shadow looks like.

```
.boxshadow{ -moz-box-shadow:4px 4px 4px  
4px #A98F7E; -webkit-box-shadow:4px 4px  
4px 4px #A98F7E; box-shadow:4px 4px 4px  
4px #A98F7E }
```

Background

The CSS property to change the background color of an element to Hex A98F7E is called "background". The background property can be set on classes, ids or directly on the HTML element.

```
.background, #background, body{  
background:#A98F7E }
```

If only the background color should be changed can be used:

```
.background{ background-color:#A98F7E }
```

This example shows the color as background, it is applied via the CSS property "background".

To optimize and compress your CSS code, you can use our [online CSS compressor and optimizer](#) based on csstidy. If you want to create a linear or radial gradient as background or border, check our [CSS Gradient Generator](#).

Hey! You found this booklet interesting? Support Converting Colors with the new Membership Option!

The pro membership hides all ads, plus gives you double the colors in the color bucket, and more awesome pro features!

[Learn more, Memberships starting at \\$2.50/m!](#)

**Follow me
on Twitter!**

@ConvertingColor