

# Converting Colors

Hex(AA684A)

Have a look what the booklet for  
Hex(AA684A) contains.

<b>Hex(AA684A)</b> .....	3
<b><i>Conversions</i></b> .....	4
<b><i>Details</i></b> .....	6
<b><i>Harmonies</i></b> .....	11
<b><i>Previews</i></b> .....	23
<b><i>Color Blindness Simulation</i></b> .....	26
<b><i>CSS Examples</i></b> .....	29

**Color**

**Hex(AA684A)**

# Conversions

## Conversions Part 1

<b>Format</b>	<b>Color</b>
Hex	AA684A
RGB	170, 104, 74
RGB Percent	67%, 41%, 29%
CMY	0.3333, 0.5922, 0.7098
CMYK	0.00, 0.39, 0.56, 0.33
HSL	19°, 39%, 48%
HSV	19°, 56%, 67%
XYZ	22.7639, 18.9411, 8.9348
YIQ	120.3140, 48.9660, 4.6620

# Conversions

## Conversions Part 2

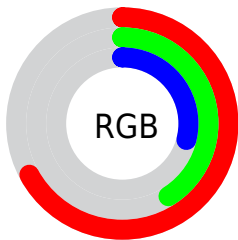
<b>Format</b>	<b>Color</b>
<b>R<sub>YB</sub></b>	170, 118, 74
Decimal	11167818
CIE Lab	50.62, 23.36, 27.95
CIE LCh	51, 36.426, 50.110
Yxy	18.9411, 0.4495, 0.3740
Android (android.graphics.Color)	4289357898 (0xFFAA684A)
YUV	120.3140, -22.8328, 43.5746
Hunter-Lab	43.5214, 17.2023, 18.2929

# Details

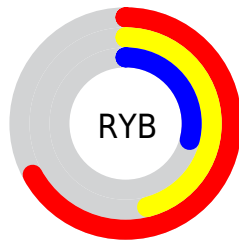
The Hex color **AA684A** is a dark color, and the websafe version is hex **996633**. A complement of this color would be **4A8CAA**, and the grayscale version is **797979**.

A 20% lighter version of the original color is **E49C7B**, and **72381D** is the 20% darker color. If you saturate the color by 10%, you get **AA5C39**, and if you desaturate by 10%, it is **AA745B**.

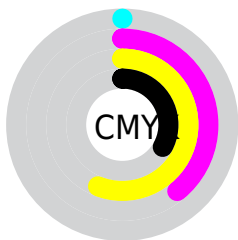
# Distribution



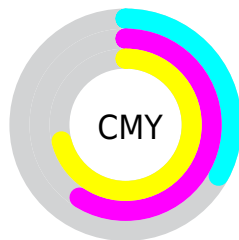
- Red (67%)
- Green (41%)
- Blue (29%)



- Red (67%)
- Yellow (46%)
- Blue (29%)



- Cyan (0%)
- Magenta (39%)
- Yellow (56%)
- Black (33%)



- Cyan (33%)
- Magenta (59%)
- Yellow (71%)

# Brightness & Saturation Gradients

These gradients show how the Hex color AA684A changes by changing the brightness by 10 percent. The first figure shows a shift by +10% for each color and the second figure -10%.

Similar to the brightness gradients but the following saturation gradients show a change of the Hex color AA684A by changing the saturation by 10% instead.



 AA684A

 AA684A

FFFFFF

 8E4F33

 E49C7B

 72381D

 FF795

 572106

 FFD3B0

 3D0B00

 FFEFC

 260001

 FFFF8

 000000

 AA684A

 AA684A

 AA5C39

 AA745B

 AA5128

 AA7F6C

■ AA4517

■ AA8B7D

■ AA3906

■ AA978E

■ AA3500

■ AAA29F

■ AAAEB0

■ AABAC1

■ AAC5D2

■ AAD1E3

# Harmonies

## Analogous

The Analogous color harmony consists of three colors that are next to each other on the color wheel.



B46065



AA684A



94733A

# Triad

The Triadic color harmony groups three colors that are evenly spaced from another and form a triangle on the color wheel.



AA684A



1E886D



6B74B3

# Complementary

The Complementary color scheme is a pair of colors which are on the opposite of each other on the color wheel.



AA684A



4A8CAA

# Split Complementary

Split-complementary colors differ from the complementary color scheme. The scheme consists of three colors, the original color and two neighbors of the complement color.



297FB5



AA684A



00888D

# Square

The Square scheme is like the rectangle color scheme, but the four colors are evenly spaced on the color wheel.



AA684A



53844F



0086A7



9568A1

# Rectangle

The Rectangle color scheme consists of four colors that form a rectangle on the color wheel.



AA684A



817A3A



0086A7



5978B5



# Sweetspot

The Sweet Spot groups the original color and five complimentary colors.



AA684A



DEC4B8



AA4A8D



70615A



F0F0F0



707070



# Same Dimension

The Same Dimension uses a secret algorithm to generate beautiful new colors.



AA684A



DE7647



AA974A



544E4C



942E00



140600



# Inverse Universe

The Inverse Universe completely reimagines the original color for something new.



4A8CAA



47AFDE



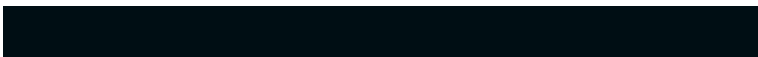
4A5DAA



4C5254



006694

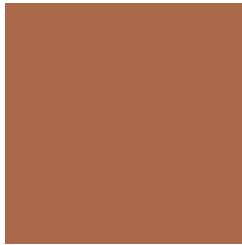


000E14



# Previews

## White Background



This preview shows how the Hex color AA684A looks on a white background.

## Color Contrast Check

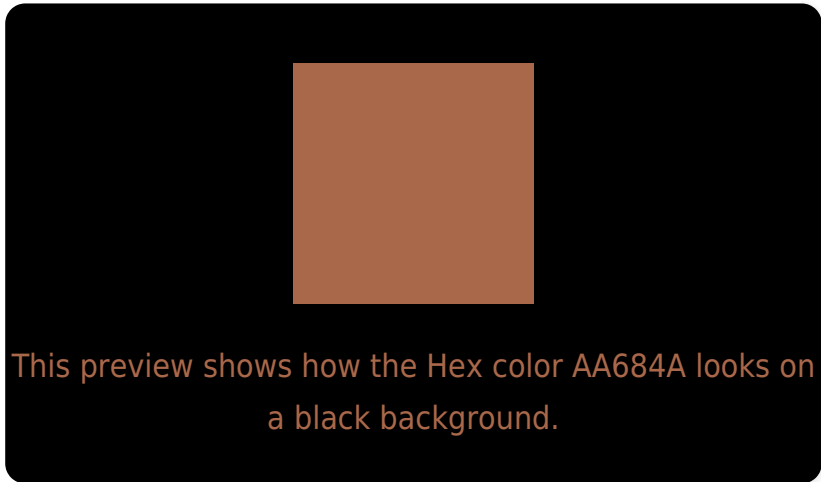
Large Text (above 18pt) WCAG AA ✓ Pass

Any Text WCAG AA × Fail

Large Text (above 18pt) WCAG AAA × Fail

Any Text WCAG AAA × Fail

# Black Background



## Color Contrast Check

Large Text (above 18pt) WCAG AA ✓ Pass

Any Text WCAG AA ✓ Pass

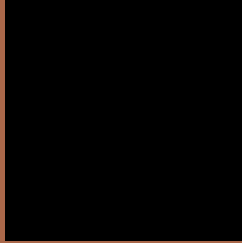
Large Text (above 18pt) WCAG AAA ✓ Pass

Any Text WCAG AAA × Fail

If you want to check with other color combinations, try the [Color Contrast Checker](#).



## Hex AA684A Background



This preview shows how black text looks on a background with the Hex color AA684A.



This preview shows how white text looks on a background with the Hex color AA684A.

# Color Blindness Simulation

Color vision deficiency is a very complex topic, and I could not describe the different causes any better than Wikipedia does, so if you want to learn more, you should check out their [article about color blindness](#).

## Dichromacy



**Original Color**  
AA684A

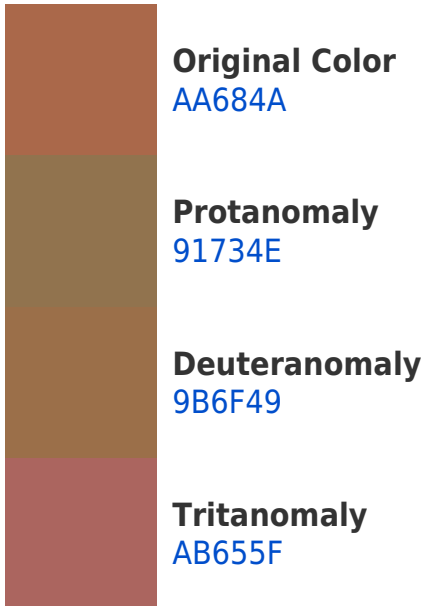
**Protanopia**  
837951

**Deuteranopia**  
937348

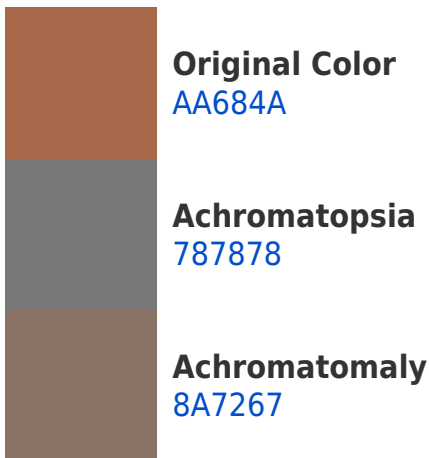


**Tritanopia**  
AC646B

# Trichromacy



# Monochromacy



# CSS Examples

## Text

The CSS property to change the color of the text to Hex AA684A is called "color". The color property can be set on classes, ids or directly on the HTML element.

This example shows how text in the color #AA684A looks like.

```
.text, #text, p{  
    color:#AA684A  
}
```

If you want to add a text shadow in that color use the text-shadow property, you can generate a text shadow directly with our [CSS Text Shadow Generator](#).

Here you see how black text with a 4 pixel #AA684A colored shadow looks like.

```
.shadow{ text-shadow: 4px 4px 2px #AA684A
}
```

## Border

The CSS property to change the border of an element to Hex AA684A is called "border". The border property can be set on classes, ids or directly on the HTML element.

This example shows the color as border, it can be applied via the CSS property "border" or "border-color".

```
.border, #border, table{ border:4px solid
#AA684A }
```

If only the border color should be changed use the property `border-color`.

```
.border{ border-color:#AA684A }
```

If you want to add a box shadow in that color use:

Here you see how a box with a 4 pixel #AA684A colored shadow looks like.

```
.boxshadow{ -moz-box-shadow:4px 4px 4px  
4px #AA684A; -webkit-box-shadow:4px 4px  
4px 4px #AA684A; box-shadow:4px 4px 4px  
4px #AA684A }
```

# Background

The CSS property to change the background color of an element to Hex AA684A is called "background". The background property can be set on classes, ids or directly on the HTML element.

```
.background, #background, body{  
background:#AA684A }
```

If only the background color should be changed can be used:

```
.background{ background-color:#AA684A }
```

This example shows the color as background, it is applied via the CSS property "background".

To optimize and compress your CSS code, you can use our [online CSS compressor and optimizer](#) based on csstidy. If you want to create a linear or radial gradient as background or border, check our [CSS Gradient Generator](#).



Hey! You found this booklet interesting? Support Converting Colors with the new Membership Option!

The pro membership hides all ads, plus gives you double the colors in the color bucket, and more awesome pro features!

**[Learn more, Memberships starting at \\$2.50/m!](#)**

**Follow me  
on Twitter!**

@ConvertingColor