

# Converting Colors

Hex(AA7C59)

Have a look what the booklet for  
Hex(AA7C59) contains.

<b>Hex(AA7C59)</b> .....	3
<b><i>Conversions</i></b> .....	4
<b><i>Details</i></b> .....	6
<b><i>Harmonies</i></b> .....	11
<b><i>Previews</i></b> .....	23
<b><i>Color Blindness Simulation</i></b> .....	26
<b><i>CSS Examples</i></b> .....	29

**Color**

**Hex(AA7C59)**

# Conversions

## Conversions Part 1

<b>Format</b>	<b>Color</b>
Hex	AA7C59
RGB	170, 124, 89
RGB Percent	67%, 49%, 35%
CMY	0.3333, 0.5137, 0.6510
CMYK	0.00, 0.27, 0.48, 0.33
HSL	26°, 32%, 51%
HSV	26°, 48%, 67%
XYZ	25.5884, 23.6826, 12.6737
YIQ	133.7640, 38.6510, -1.1330

# Conversions

## Conversions Part 2

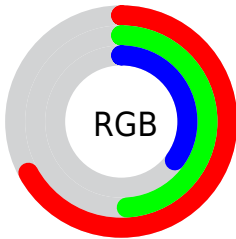
<b>Format</b>	<b>Color</b>
<b>R<sub>YB</sub></b>	170, 151, 89
Decimal	11172953
CIE Lab	55.77, 13.51, 26.09
CIE LCh	56, 29.376, 62.629
Yxy	23.6826, 0.4131, 0.3823
Android (android.graphics.Color)	4289363033 (0xFFAA7C59)
YUV	133.7640, -22.0687, 31.7790
Hunter-Lab	48.6648, 8.6935, 18.6245

# Details

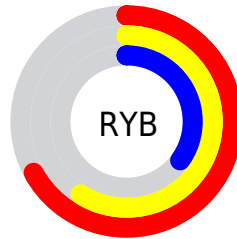
The Hex color **AA7C59** is a dark color, and the websafe version is hex **996633**. A complement of this color would be **5987AA**, and the grayscale version is **868686**.

A 20% lighter version of the original color is **E3B18B**, and **734B2B** is the 20% darker color. If you saturate the color by 10%, you get **AA7248**, and if you desaturate by 10%, it is **AA866A**.

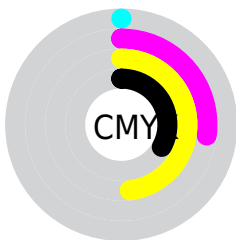
# Distribution



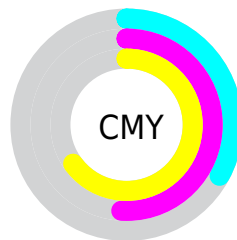
- Red (67%)
- Green (49%)
- Blue (35%)



- Red (67%)
- Yellow (59%)
- Blue (35%)



- Cyan (0%)
- Magenta (27%)
- Yellow (48%)
- Black (33%)



- Cyan (33%)
- Magenta (51%)
- Yellow (65%)

# Brightness & Saturation Gradients

These gradients show how the Hex color AA7C59 changes by changing the brightness by 10 percent. The first figure shows a shift by +10% for each color and the second figure -10%.

Similar to the brightness gradients but the following saturation gradients show a change of the Hex color AA7C59 by changing the saturation by 10% instead.



 AA7C59

 AA7C59

FFFFFF

 8E6341

 E3B18B

 734B2B

 FFCCA6

 593415

 FFE8C1

 401F00

 FFFFDD

 270900

 FFFFFA

 000000

 AA7C59

 AA7C59

 AA7248

 AA866A

 AA6937

 AA8F7B

■ AA5F26

■ AA998C

■ AA5515

■ AAA39D

■ AA4C04

■ AAACAE

■ AA4900

■ AAB6BF

■ AAC0D0

■ AAC9E1

■ AAD3F2

# Harmonies

## Analogous

The Analogous color harmony consists of three colors that are next to each other on the color wheel.



B6756B



AA7C59



958552

# Triad

The Triadic color harmony groups three colors that are evenly spaced from another and form a triangle on the color wheel.



AA7C59



3B9387



8C7EB1

# Complementary

The Complementary color scheme is a pair of colors which are on the opposite of each other on the color wheel.



AA7C59



5987AA

# Split Complementary

Split-complementary colors differ from the complementary color scheme. The scheme consists of three colors, the original color and two neighbors of the complement color.



6687B8



AA7C59



2693A0

# Square

The Square scheme is like the rectangle color scheme, but the four colors are evenly spaced on the color wheel.



AA7C59



5B916D



3C8EB2



A8769E

# Rectangle

The Rectangle color scheme consists of four colors that form a rectangle on the color wheel.



AA7C59



838A56



3C8EB2



8081B5



# Sweetspot

The Sweet Spot groups the original color and five complimentary colors.



AA7C59



DECCBF



AA5988



70655D



F0F0F0



707070



# Same Dimension

The Same Dimension uses a secret algorithm to generate beautiful new colors.



AA7C59



DE965F



AAA359



544F4C



944000



140900



# Inverse Universe

The Inverse Universe completely reimagines the original color for something new.



5987AA



5FA7DE



5960AA



4C5154



005494

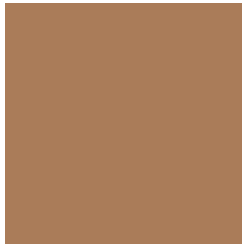


000C14



# Previews

## White Background



This preview shows how the Hex color AA7C59 looks on a white background.

## Color Contrast Check

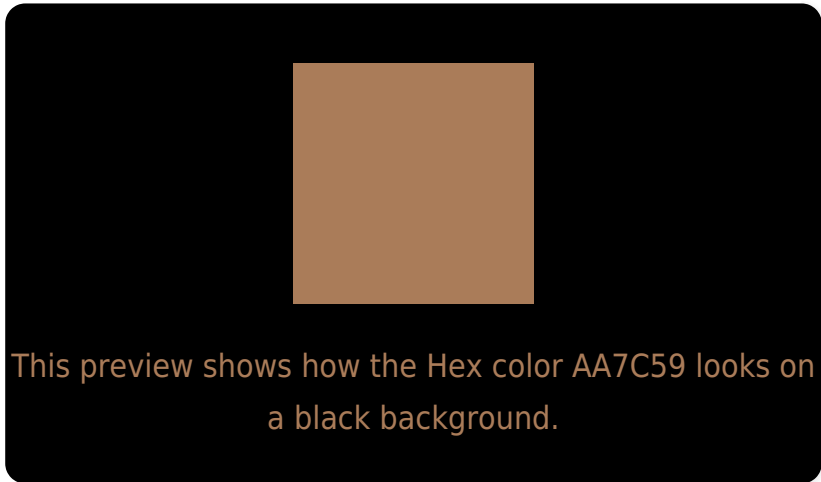
Large Text (above 18pt) WCAG AA ✓ Pass

Any Text WCAG AA × Fail

Large Text (above 18pt) WCAG AAA × Fail

Any Text WCAG AAA × Fail

# Black Background



## Color Contrast Check

Large Text (above 18pt) WCAG AA ✓ Pass

Any Text WCAG AA ✓ Pass

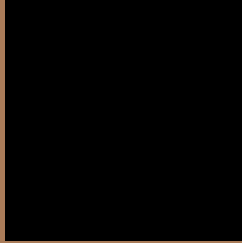
Large Text (above 18pt) WCAG AAA ✓ Pass

Any Text WCAG AAA × Fail

If you want to check with other color combinations, try the [Color Contrast Checker](#).



## Hex AA7C59 Background



This preview shows how black text looks on a background with the Hex color AA7C59.



This preview shows how white text looks on a background with the Hex color AA7C59.

# Color Blindness Simulation

Color vision deficiency is a very complex topic, and I could not describe the different causes any better than Wikipedia does, so if you want to learn more, you should check out their [article about color blindness](#).

## Dichromacy



**Original Color**  
AA7C59

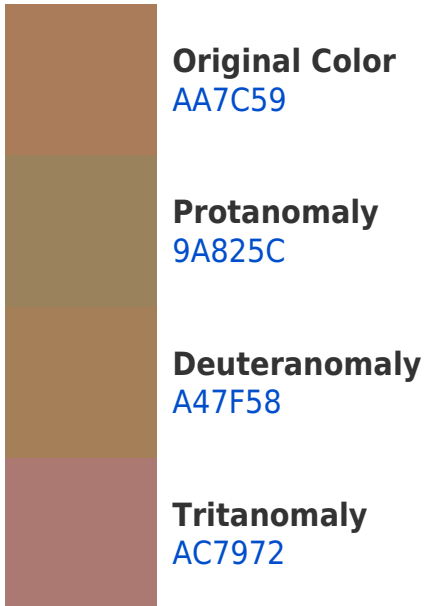
**Protanopia**  
91865D

**Deuteranopia**  
A18058

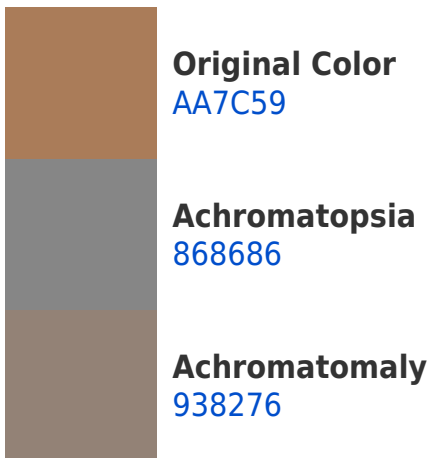


**Tritanopia**  
AD7780

# Trichromacy



# Monochromacy



# CSS Examples

## Text

The CSS property to change the color of the text to Hex AA7C59 is called "color". The color property can be set on classes, ids or directly on the HTML element.

This example shows how text in the color #AA7C59 looks like.

```
.text, #text, p{  
    color:#AA7C59  
}
```

If you want to add a text shadow in that color use the text-shadow property, you can generate a text shadow directly with our [CSS Text Shadow Generator](#).

Here you see how black text with a 4 pixel #AA7C59 colored shadow looks like.

```
.shadow{ text-shadow: 4px 4px 2px #AA7C59
}
```

## Border

The CSS property to change the border of an element to Hex AA7C59 is called "border". The border property can be set on classes, ids or directly on the HTML element.

This example shows the color as border, it can be applied via the CSS property "border" or "border-color".

```
.border, #border, table{ border:4px solid
#AA7C59 }
```

If only the border color should be changed use the property `border-color`.

```
.border{ border-color:#AA7C59 }
```

If you want to add a box shadow in that color use:

Here you see how a box with a 4 pixel #AA7C59 colored shadow looks like.

```
.boxshadow{ -moz-box-shadow:4px 4px 4px  
4px #AA7C59; -webkit-box-shadow:4px 4px  
4px 4px #AA7C59; box-shadow:4px 4px 4px  
4px #AA7C59 }
```

# Background

The CSS property to change the background color of an element to Hex AA7C59 is called "background". The background property can be set on classes, ids or directly on the HTML element.

```
.background, #background, body{  
background:#AA7C59 }
```

If only the background color should be changed can be used:

```
.background{ background-color:#AA7C59 }
```

This example shows the color as background, it is applied via the CSS property "background".

To optimize and compress your CSS code, you can use our [online CSS compressor and optimizer](#) based on csstidy. If you want to create a linear or radial gradient as background or border, check our [CSS Gradient Generator](#).



Hey! You found this booklet interesting? Support Converting Colors with the new Membership Option!

The pro membership hides all ads, plus gives you double the colors in the color bucket, and more awesome pro features!

**[Learn more, Memberships starting at \\$2.50/m!](#)**

**Follow me  
on Twitter!**

@ConvertingColor