

Converting Colors

Hex(AA7D56)

Have a look what the booklet for
Hex(AA7D56) contains.

Hex(AA7D56)	3
<i>Conversions</i>	4
<i>Details</i>	6
<i>Harmonies</i>	11
<i>Previews</i>	23
<i>Color Blindness Simulation</i>	26
<i>CSS Examples</i>	29

Color

Hex(AA7D56)

Conversions

Conversions Part 1

Format	Color
Hex	AA7D56
RGB	170, 125, 86
RGB Percent	67%, 49%, 34%
CMY	0.3333, 0.5098, 0.6627
CMYK	0.00, 0.26, 0.49, 0.33
HSL	28°, 33%, 50%
HSV	28°, 49%, 67%
XYZ	25.5909, 23.8852, 12.0656
YIQ	134.0090, 39.3390, -2.5890

Conversions

Conversions Part 2

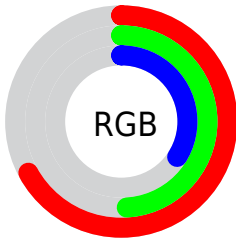
Format	Color
RYB	170, 159, 86
Decimal	11173206
CIELab	55.97, 12.64, 28.03
CIElCh	56, 30.744, 65.731
Yxy	23.8852, 0.4158, 0.3881
Android (android.graphics.Color)	4289363286 (0xFFAA7D56)
YUV	134.0090, -23.6684, 31.5641
Hunter-Lab	48.8725, 7.9405, 19.5732

Details

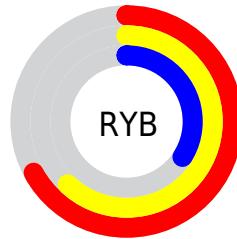
The Hex color **AA7D56** is a dark color, and the websafe version is hex **996633**. A complement of this color would be **5683AA**, and the grayscale version is **868686**.

A 20% lighter version of the original color is **E3B288**, and **734C28** is the 20% darker color. If you saturate the color by 10%, you get **AA7445**, and if you desaturate by 10%, it is **AA8667**.

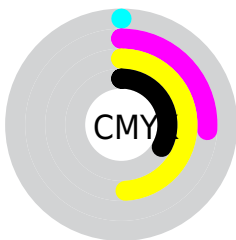
Distribution



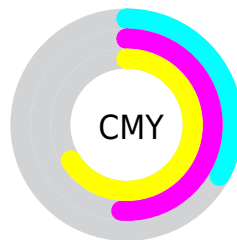
- Red (67%)
- Green (49%)
- Blue (34%)



- Red (67%)
- Yellow (62%)
- Blue (34%)



- Cyan (0%)
- Magenta (26%)
- Yellow (49%)
- Black (33%)



- Cyan (33%)
- Magenta (51%)
- Yellow (66%)

Brightness & Saturation Gradients

These gradients show how the Hex color AA7D56 changes by changing the brightness by 10 percent. The first figure shows a shift by +10% for each color and the second figure -10%.

Similar to the brightness gradients but the following saturation gradients show a change of the Hex color AA7D56 by changing the saturation by 10% instead.

 AA7D56

 AA7D56

FFFFFF

 8E643E

 E3B288

 734C28

 FFCDA3

 593512

 FFE9BE

 402000

 FFFFDA

 270B00

 FFFFF6

 000000

 AA7D56

 AA7D56

 AA7445

 AA8667

 AA6B34

 AA8F78

■ AA6223

■ AA9889

■ AA5912

■ AAA19A

■ AA4F01

■ AAABAB

■ AA4F00

■ AAB4BC

■ AABDCD

■ AAC6DE

■ AACFEF

Harmonies

Analogous

The Analogous color harmony consists of three colors that are next to each other on the color wheel.



B87568



AA7D56



938650

Triad

The Triadic color harmony groups three colors that are evenly spaced from another and form a triangle on the color wheel.



AA7D56



32958B



907DB2

Complementary

The Complementary color scheme is a pair of colors which are on the opposite of each other on the color wheel.



AA7D56



5683AA

Split Complementary

Split-complementary colors differ from the complementary color scheme. The scheme consists of three colors, the original color and two neighbors of the complement color.



6887BB



AA7D56



1A93A4

Square

The Square scheme is like the rectangle color scheme, but the four colors are evenly spaced on the color wheel.



AA7D56



56936F



3B8FB6



AC759D

Rectangle

The Rectangle color scheme consists of four colors that form a rectangle on the color wheel.



AA7D56



808C55



3B8FB6



8481B6

Sweetspot

The Sweet Spot groups the original color and five complimentary colors.



AA7D56



DECCBD



AA5684



70655C



F0F0F0



707070

Same Dimension

The Same Dimension uses a secret algorithm to generate beautiful new colors.



AA7D56



DE985B



AAA656



54504C



944500



140900

Inverse Universe

The Inverse Universe completely reimagines the original color for something new.



5683AA



5BA1DE



565AAA



4C5054



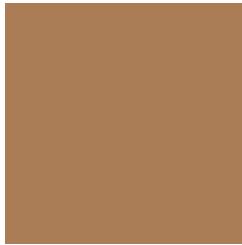
004F94



000B14

Previews

White Background



This preview shows how the Hex color AA7D56 looks on a white background.

Color Contrast Check

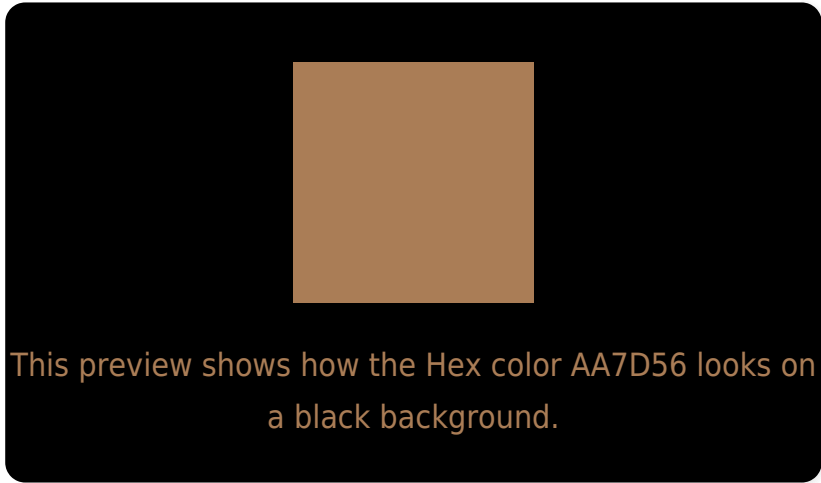
Large Text (above 18pt) WCAG AA ✓ Pass

Any Text WCAG AA × Fail

Large Text (above 18pt) WCAG AAA × Fail

Any Text WCAG AAA × Fail

Black Background



Color Contrast Check

Large Text (above 18pt) WCAG AA ✓ Pass

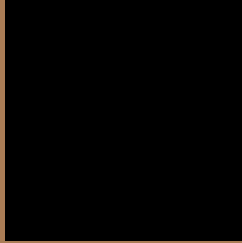
Any Text WCAG AA ✓ Pass

Large Text (above 18pt) WCAG AAA ✓ Pass

Any Text WCAG AAA × Fail

If you want to check with other color combinations, try the [Color Contrast Checker](#).

Hex AA7D56 Background



This preview shows how black text looks on a background with the Hex color AA7D56.



This preview shows how white text looks on a background with the Hex color AA7D56.

Color Blindness Simulation

Color vision deficiency is a very complex topic, and I could not describe the different causes any better than Wikipedia does, so if you want to learn more, you should check out their [article about color blindness](#).

Dichromacy



Original Color
AA7D56

Protanopia
92865A

Deuteranopia
A28055



Tritanopia
AE7881

Trichromacy



Original Color
AA7D56

Protanomaly
9B8359

Deuteranomaly
A57F55

Tritanomaly
AD7A71

Monochromacy



Original Color
AA7D56

Achromatopsia
868686

Achromatomaly
938375

CSS Examples

Text

The CSS property to change the color of the text to Hex AA7D56 is called "color". The color property can be set on classes, ids or directly on the HTML element.

This example shows how text in the color #AA7D56 looks like.

```
.text, #text, p{  
    color:#AA7D56  
}
```

If you want to add a text shadow in that color use the text-shadow property, you can generate a text shadow directly with our [CSS Text Shadow Generator](#).

Here you see how black text with a 4 pixel #AA7D56 colored shadow looks like.

```
.shadow{ text-shadow: 4px 4px 2px #AA7D56
}
```

Border

The CSS property to change the border of an element to Hex AA7D56 is called "border". The border property can be set on classes, ids or directly on the HTML element.

This example shows the color as border, it can be applied via the CSS property "border" or "border-color".

```
.border, #border, table{ border:4px solid
#AA7D56 }
```

If only the border color should be changed use the property `border-color`.

```
.border{ border-color:#AA7D56 }
```

If you want to add a box shadow in that color use:

Here you see how a box with a 4 pixel #AA7D56 colored shadow looks like.

```
.boxshadow{ -moz-box-shadow:4px 4px 4px  
4px #AA7D56; -webkit-box-shadow:4px 4px  
4px 4px #AA7D56; box-shadow:4px 4px 4px  
4px #AA7D56 }
```

Background

The CSS property to change the background color of an element to Hex AA7D56 is called "background". The background property can be set on classes, ids or directly on the HTML element.

```
.background, #background, body{  
background:#AA7D56 }
```

If only the background color should be changed can be used:

```
.background{ background-color:#AA7D56 }
```

This example shows the color as background, it is applied via the CSS property "background".

To optimize and compress your CSS code, you can use our [online CSS compressor and optimizer](#) based on csstidy. If you want to create a linear or radial gradient as background or border, check our [CSS Gradient Generator](#).

Hey! You found this booklet interesting? Support Converting Colors with the new Membership Option!

The pro membership hides all ads, plus gives you double the colors in the color bucket, and more awesome pro features!

[Learn more, Memberships starting at \\$2.50/m!](#)

**Follow me
on Twitter!**

@ConvertingColor