

Converting Colors

Hex(AA7D7C)

Have a look what the booklet for
Hex(AA7D7C) contains.

Hex(AA7D7C)	3
<i>Conversions</i>	4
<i>Details</i>	6
<i>Harmonies</i>	11
<i>Previews</i>	23
<i>Color Blindness Simulation</i>	26
<i>CSS Examples</i>	29

Color

Hex(AA7D7C)

Conversions

Conversions Part 1

Format	Color
Hex	AA7D7C
RGB	170, 125, 124
RGB Percent	67%, 49%, 49%
CMY	0.3333, 0.5098, 0.5137
CMYK	0.00, 0.26, 0.27, 0.33
HSL	1°, 21%, 58%
HSV	1°, 27%, 67%
XYZ	27.5493, 24.6685, 22.3783
YIQ	138.3410, 27.1410, 9.2290

Conversions

Conversions Part 2

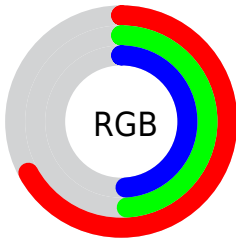
Format	Color
R _Y B	170, 125, 124
Decimal	11173244
CIE Lab	56.75, 17.32, 7.40
CIE LCh	57, 18.833, 23.153
Yxy	24.6685, 0.3693, 0.3307
Android (android.graphics.Color)	4289363324 (0xFFAA7D7C)
YUV	138.3410, -7.0701, 27.7649
Hunter-Lab	49.6674, 12.0915, 8.0533

Details

The Hex color **AA7D7C** is a dark color, and the websafe version is hex **996666**. A complement of this color would be **7CA9AA**, and the grayscale version is **8A8A8A**.

A 20% lighter version of the original color is **E2B2B0**, and **754C4B** is the 20% darker color. If you saturate the color by 10%, you get **AA6C6B**, and if you desaturate by 10%, it is **AA8E8D**.

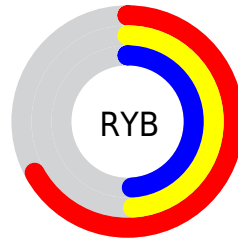
Distribution



Red (67%)

Green (49%)

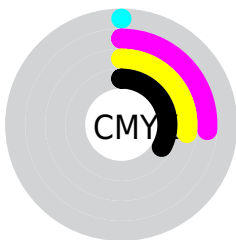
Blue (49%)



Red (67%)

Yellow (49%)

Blue (49%)

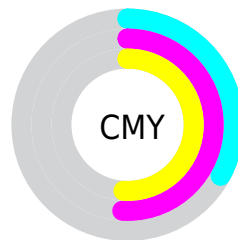


Cyan (0%)

Magenta (26%)

Yellow (27%)

Black (33%)



Cyan (33%)

Magenta (51%)

Yellow (51%)

Brightness & Saturation Gradients

These gradients show how the Hex color AA7D7C changes by changing the brightness by 10 percent. The first figure shows a shift by +10% for each color and the second figure -10%.

Similar to the brightness gradients but the following saturation gradients show a change of the Hex color AA7D7C by changing the saturation by 10% instead.

■ AA7D7C

■ AA7D7C

FFFFFF

■ 8F6463

■ E2B2B0

■ 754C4B

■ FFCDCC

■ 5B3535

■ FFEAE8

■ 431F20

■ 2C0907

■ 090000

■ 000000

■ AA7D7C

■ AA7D7C

■ AA6C6B

■ AA8E8D

■ AA5C5A

■ AA9E9E

■ AA4B49

■ AAFAF

■ AA3A38

■ AACOC0

■ AA2A27

■ AAD0D1

■ AA1916

■ AAE1E2

■ AA0905

■ AAF1F3

■ AA0400

■ AAFFFF

Harmonies

Analogous

The Analogous color harmony consists of three colors that are next to each other on the color wheel.



A67D8D



AA7D7C



A5816F

Triad

The Triadic color harmony groups three colors that are evenly spaced from another and form a triangle on the color wheel.



AA7D7C



748F74



708BA8

Complementary

The Complementary color scheme is a pair of colors which are on the opposite of each other on the color wheel.



AA7D7C



7CA9AA

Split Complementary

Split-complementary colors differ from the complementary color scheme. The scheme consists of three colors, the original color and two neighbors of the complement color.



5F8FA2



AA7D7C



639184

Square

The Square scheme is like the rectangle color scheme, but the four colors are evenly spaced on the color wheel.



AA7D7C



878B6A



5A9194



8685A6

Rectangle

The Rectangle color scheme consists of four colors that form a rectangle on the color wheel.



AA7D7C



9D8469



5A9194



698CA7

Sweetspot

The Sweet Spot groups the original color and five complimentary colors.



AA7D7C



DECCCC



AA7CA9



706565



F0F0F0



707070

Same Dimension

The Same Dimension uses a secret algorithm to generate beautiful new colors.



AA7D7C



DE9897



AA947C



544C4C



940300



140000

Inverse Universe

The Inverse Universe completely reimagines the original color for something new.



7CA9AA



97DCDE



7C92AA



4C5454



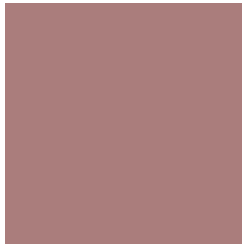
009194



001414

Previews

White Background



This preview shows how the Hex color AA7D7C looks on a white background.

Color Contrast Check

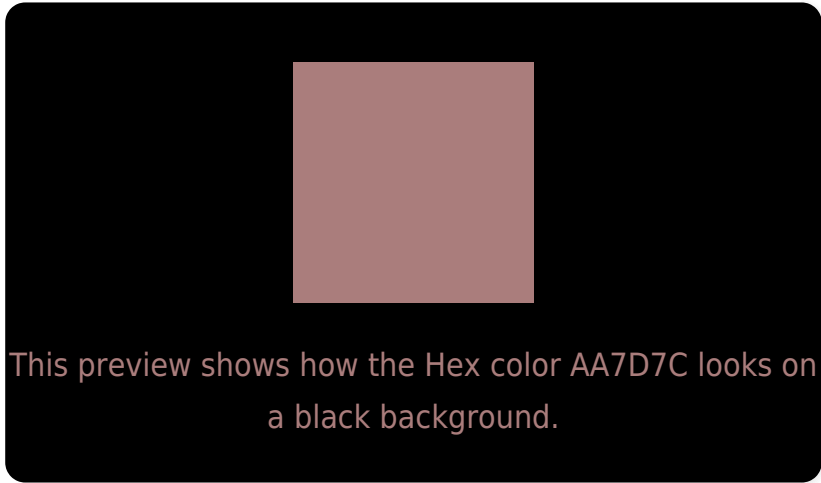
Large Text (above 18pt) WCAG AA ✓ Pass

Any Text WCAG AA × Fail

Large Text (above 18pt) WCAG AAA × Fail

Any Text WCAG AAA × Fail

Black Background



Color Contrast Check

Large Text (above 18pt) WCAG AA ✓ Pass

Any Text WCAG AA ✓ Pass

Large Text (above 18pt) WCAG AAA ✓ Pass

Any Text WCAG AAA × Fail

If you want to check with other color combinations, try the [Color Contrast Checker](#).

Hex AA7D7C Background



This preview shows how black text looks on a background with the Hex color AA7D7C.



This preview shows how white text looks on a background with the Hex color AA7D7C.

Color Blindness Simulation

Color vision deficiency is a very complex topic, and I could not describe the different causes any better than Wikipedia does, so if you want to learn more, you should check out their [article about color blindness](#).

Dichromacy



Original Color
AA7D7C

Protanopia
8C8882

Deuteranopia
9B847B



Tritanopia
AB7C85

Trichromacy



Original Color
AA7D7C

Protanomaly
978480

Deuteranomaly
A0817B

Tritanomaly
AB7C82

Monochromacy



Original Color
AA7D7C

Achromatopsia
8A8A8A

Achromatomaly
968585

CSS Examples

Text

The CSS property to change the color of the text to Hex AA7D7C is called "color". The color property can be set on classes, ids or directly on the HTML element.

This example shows how text in the color #AA7D7C looks like.

```
.text, #text, p{  
    color:#AA7D7C  
}
```

If you want to add a text shadow in that color use the text-shadow property, you can generate a text shadow directly with our [CSS Text Shadow Generator](#).

Here you see how black text with a 4 pixel #AA7D7C colored shadow looks like.

```
.shadow{ text-shadow: 4px 4px 2px #AA7D7C  
}
```

Border

The CSS property to change the border of an element to Hex AA7D7C is called "border". The border property can be set on classes, ids or directly on the HTML element.

This example shows the color as border, it can be applied via the CSS property "border" or "border-color".

```
.border, #border, table{ border:4px solid  
#AA7D7C }
```

If only the border color should be changed use the property `border-color`.

```
.border{ border-color:#AA7D7C }
```

If you want to add a box shadow in that color use:

Here you see how a box with a 4 pixel #AA7D7C colored shadow looks like.

```
.boxshadow{ -moz-box-shadow:4px 4px 4px  
4px #AA7D7C; -webkit-box-shadow:4px 4px  
4px 4px #AA7D7C; box-shadow:4px 4px 4px  
4px #AA7D7C }
```

Background

The CSS property to change the background color of an element to Hex AA7D7C is called "background". The background property can be set on classes, ids or directly on the HTML element.

```
.background, #background, body{  
background:#AA7D7C }
```

If only the background color should be changed can be used:

```
.background{ background-color:#AA7D7C }
```

This example shows the color as background, it is applied via the CSS property "background".

To optimize and compress your CSS code, you can use our [online CSS compressor and optimizer](#) based on csstidy. If you want to create a linear or radial gradient as background or border, check our [CSS Gradient Generator](#).

Hey! You found this booklet interesting? Support Converting Colors with the new Membership Option!

The pro membership hides all ads, plus gives you double the colors in the color bucket, and more awesome pro features!

[Learn more, Memberships starting at \\$2.50/m!](#)

**Follow me
on Twitter!**

@ConvertingColor