

Converting Colors

Hex(AA8B6A)

Have a look what the booklet for
Hex(AA8B6A) contains.

Hex(AA8B6A)	3
<i>Conversions</i>	4
<i>Details</i>	6
<i>Harmonies</i>	11
<i>Previews</i>	23
<i>Color Blindness Simulation</i>	26
<i>CSS Examples</i>	29

Color

Hex(AA8B6A)

Conversions

Conversions Part 1

Format	Color
Hex	AA8B6A
RGB	170, 139, 106
RGB Percent	67%, 55%, 42%
CMY	0.3333, 0.4549, 0.5843
CMYK	0.00, 0.18, 0.38, 0.33
HSL	31°, 27%, 54%
HSV	31°, 38%, 67%
XYZ	28.4117, 28.0519, 17.5528
YIQ	144.5070, 29.0690, -3.6910

Conversions

Conversions Part 2

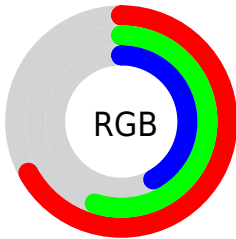
Format	Color
R_{YB}	166, 170, 106
Decimal	11176810
CIE Lab	59.94, 7.01, 22.07
CIE LCh	60, 23.160, 72.390
Yxy	28.0519, 0.3839, 0.3790
Android (android.graphics.Color)	4289366890 (0xFFAA8B6A)
YUV	144.5070, -18.9840, 22.3574
Hunter-Lab	52.9640, 3.0664, 17.4256

Details

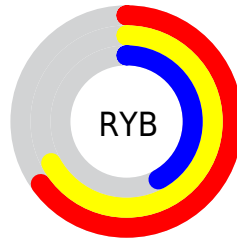
The Hex color **AA8B6A** is a dark color, and the websafe version is hex **CC9966**. A complement of this color would be **6A89AA**, and the grayscale version is **919191**.

A 20% lighter version of the original color is **E2C09E**, and **74593A** is the 20% darker color. If you saturate the color by 10%, you get **AA8359**, and if you desaturate by 10%, it is **AA937B**.

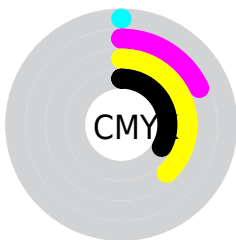
Distribution



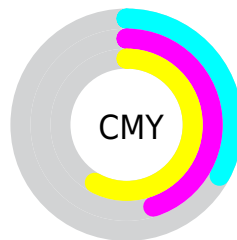
- Red (67%)
- Green (55%)
- Blue (42%)



- Red (65%)
- Yellow (67%)
- Blue (42%)



- Cyan (0%)
- Magenta (18%)
- Yellow (38%)
- Black (33%)



- Cyan (33%)
- Magenta (45%)
- Yellow (58%)

Brightness & Saturation Gradients

These gradients show how the Hex color AA8B6A changes by changing the brightness by 10 percent. The first figure shows a shift by +10% for each color and the second figure -10%.

Similar to the brightness gradients but the following saturation gradients show a change of the Hex color AA8B6A by changing the saturation by 10% instead.

 AA8B6A

 AA8B6A

FFFFFF

 8F7252

 E2C09E

 74593A

 FFDCB9

 5B4224

 FFF9D4

 422C0F

 FFFFF1

 2B1700

 100000

 000000

 AA8B6A

 AA8B6A

 AA8359

 AA937B

■ AA7B48

■ AA9B8C

■ AA7237

■ AAA49D

■ AA6A26

■ AAACAE

■ AA6215

■ AAB4BF

■ AA5A04

■ AABCD0

■ AA5800

■ AAC5E1

■ AACDF2

■ AAD5FF

Harmonies

Analogous

The Analogous color harmony consists of three colors that are next to each other on the color wheel.



B78576



AA8B6A



979268

Triad

The Triadic color harmony groups three colors that are evenly spaced from another and form a triangle on the color wheel.



AA8B6A



579C98



9E88AF

Complementary

The Complementary color scheme is a pair of colors which are on the opposite of each other on the color wheel.



AA8B6A



6A89AA

Split Complementary

Split-complementary colors differ from the complementary color scheme. The scheme consists of three colors, the original color and two neighbors of the complement color.



838FB8



AA8B6A



559AAB

Square

The Square scheme is like the rectangle color scheme, but the four colors are evenly spaced on the color wheel.



AA8B6A



699B83



6796B7



B1839D

Rectangle

The Rectangle color scheme consists of four colors that form a rectangle on the color wheel.



AA8B6A



88966E



6796B7



968BB3

Sweetspot

The Sweet Spot groups the original color and five complimentary colors.



AA8B6A



DED2C5



AA6A8A



706962



F0F0F0



707070

Same Dimension

The Same Dimension uses a secret algorithm to generate beautiful new colors.



AA8B6A



DEAD7A



AAAA6A



54504C



944C00



140B00

Inverse Universe

The Inverse Universe completely reimagines the original color for something new.



6A89AA



7AAADE



6A6AAA



4C5054



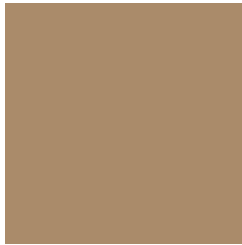
004894



000A14

Previews

White Background



This preview shows how the Hex color AA8B6A looks on a white background.

Color Contrast Check

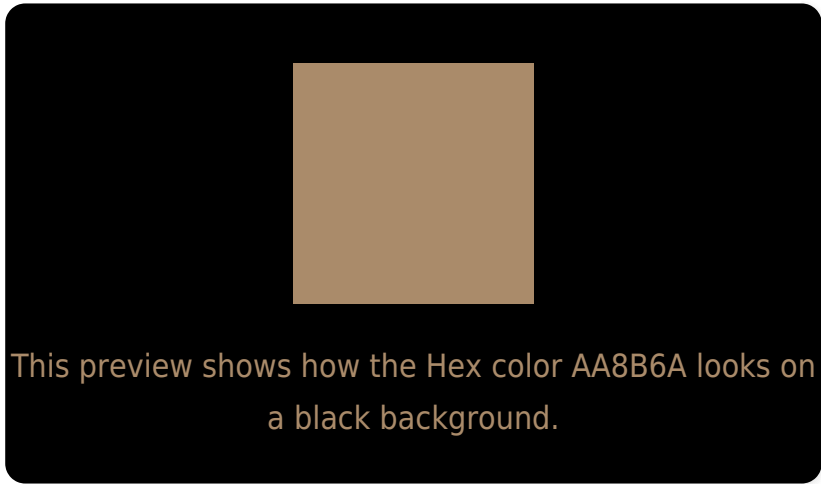
Large Text (above 18pt) WCAG AA ✓ Pass

Any Text WCAG AA × Fail

Large Text (above 18pt) WCAG AAA × Fail

Any Text WCAG AAA × Fail

Black Background



Color Contrast Check

Large Text (above 18pt) WCAG AA ✓ Pass

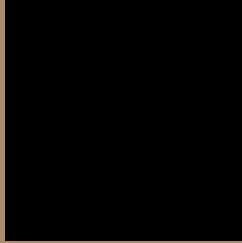
Any Text WCAG AA ✓ Pass

Large Text (above 18pt) WCAG AAA ✓ Pass

Any Text WCAG AAA × Fail

If you want to check with other color combinations, try the [Color Contrast Checker](#).

Hex AA8B6A Background



This preview shows how black text looks on a background with the Hex color AA8B6A.

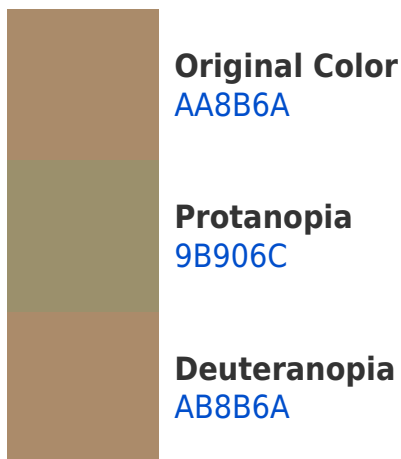


This preview shows how white text looks on a background with the Hex color AA8B6A.

Color Blindness Simulation

Color vision deficiency is a very complex topic, and I could not describe the different causes any better than Wikipedia does, so if you want to learn more, you should check out their [article about color blindness](#).

Dichromacy



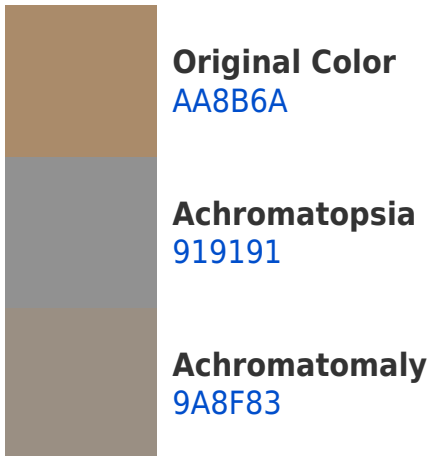


Tritanopia
AE8690

Trichromacy



Monochromacy



CSS Examples

Text

The CSS property to change the color of the text to Hex AA8B6A is called "color". The color property can be set on classes, ids or directly on the HTML element.

This example shows how text in the color #AA8B6A looks like.

```
.text, #text, p{  
    color:#AA8B6A  
}
```

If you want to add a text shadow in that color use the text-shadow property, you can generate a text shadow directly with our [CSS Text Shadow Generator](#).

Here you see how black text with a 4 pixel #AA8B6A colored shadow looks like.

```
.shadow{ text-shadow: 4px 4px 2px #AA8B6A
}
```

Border

The CSS property to change the border of an element to Hex AA8B6A is called "border". The border property can be set on classes, ids or directly on the HTML element.

This example shows the color as border, it can be applied via the CSS property "border" or "border-color".

```
.border, #border, table{ border:4px solid
#AA8B6A }
```

If only the border color should be changed use the property `border-color`.

```
.border{ border-color:#AA8B6A }
```

If you want to add a box shadow in that color use:

Here you see how a box with a 4 pixel #AA8B6A colored shadow looks like.

```
.boxshadow{ -moz-box-shadow:4px 4px 4px  
4px #AA8B6A; -webkit-box-shadow:4px 4px  
4px 4px #AA8B6A; box-shadow:4px 4px 4px  
4px #AA8B6A }
```

Background

The CSS property to change the background color of an element to Hex AA8B6A is called "background". The background property can be set on classes, ids or directly on the HTML element.

```
.background, #background, body{  
background:#AA8B6A }
```

If only the background color should be changed can be used:

```
.background{ background-color:#AA8B6A }
```

This example shows the color as background, it is applied via the CSS property "background".

To optimize and compress your CSS code, you can use our [online CSS compressor and optimizer](#) based on csstidy. If you want to create a linear or radial gradient as background or border, check our [CSS Gradient Generator](#).

Hey! You found this booklet interesting? Support Converting Colors with the new Membership Option!

The pro membership hides all ads, plus gives you double the colors in the color bucket, and more awesome pro features!

[Learn more, Memberships starting at \\$2.50/m!](#)

**Follow me
on Twitter!**

@ConvertingColor