

# Converting Colors

Hex(AA907E)

Have a look what the booklet for  
Hex(AA907E) contains.

<b>Hex(AA907E)</b> .....	3
<b><i>Conversions</i></b> .....	4
<b><i>Details</i></b> .....	6
<b><i>Harmonies</i></b> .....	11
<b><i>Previews</i></b> .....	23
<b><i>Color Blindness Simulation</i></b> .....	26
<b><i>CSS Examples</i></b> .....	29

**Color**

**Hex(AA907E)**

# Conversions

## Conversions Part 1

Format	Color
Hex	AA907E
RGB	170, 144, 126
RGB Percent	67%, 56%, 49%
CMY	0.3333, 0.4353, 0.5059
CMYK	0.00, 0.15, 0.26, 0.33
HSL	25°, 21%, 58%
HSV	25°, 26%, 67%
XYZ	30.3167, 29.9989, 23.9312
YIQ	149.7220, 21.2740, -0.0860

# Conversions

## Conversions Part 2

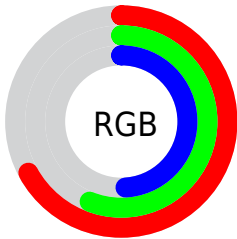
Format	Color
<a href="#">RYB</a>	<a href="#">170, 156, 126</a>
Decimal	<a href="#">11178110</a>
CIELab	<a href="#">61.65, 6.91, 13.19</a>
CIElCh	<a href="#">62, 14.890, 62.334</a>
Yxy	<a href="#">29.9989, 0.3599, 0.3561</a>
Android (android.graphics.Color)	<a href="#">4289368190 (0xFFAA907E)</a>
YUV	<a href="#">149.7220, -11.6949, 17.7838</a>
Hunter-Lab	<a href="#">54.7713, 2.9527, 12.4344</a>

# Details

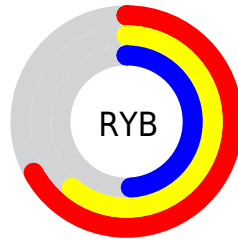
The Hex color **AA907E** is a dark color, and the websafe version is hex **CC9999**. A complement of this color would be **7E98AA**, and the grayscale version is **969696**.

A 20% lighter version of the original color is **E2C6B3**, and **755E4D** is the 20% darker color. If you saturate the color by 10%, you get **AA866D**, and if you desaturate by 10%, it is **AA9A8F**.

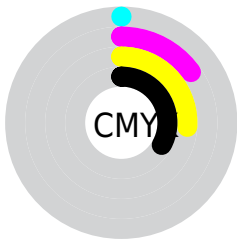
# Distribution



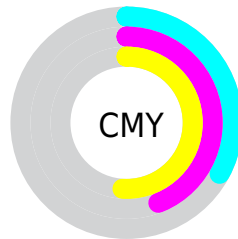
- Red (67%)
- Green (56%)
- Blue (49%)



- Red (67%)
- Yellow (61%)
- Blue (49%)



- Cyan (0%)
- Magenta (15%)
- Yellow (26%)
- Black (33%)



- Cyan (33%)
- Magenta (44%)
- Yellow (51%)

# Brightness & Saturation Gradients

These gradients show how the Hex color AA907E changes by changing the brightness by 10 percent. The first figure shows a shift by +10% for each color and the second figure -10%.

Similar to the brightness gradients but the following saturation gradients show a change of the Hex color AA907E by changing the saturation by 10% instead.



 AA907E

 AA907E

FFFFFF

 8F7665

 E2C6B3

 755E4D

 FFE2CE

 5C4636

 FFFEEA

 443021

 2D1B0A

 170000

 000000

 AA907E

 AA907E

 AA866D

 AA9A8F

■ AA7C5C

■ AAA4A0

■ AA724B

■ AAAEB1

■ AA683A

■ AAB8C2

■ AA5E29

■ AAC2D3

■ AA5418

■ AACCE4

■ AA4A07

■ AAD6F5

■ AA4600

■ AAEOFF

■ AAEAFF

# Harmonies

## Analogous

The Analogous color harmony consists of three colors that are next to each other on the color wheel.



B08D87



AA907E



9E947B

# Triad

The Triadic color harmony groups three colors that are evenly spaced from another and form a triangle on the color wheel.



AA907E



769D95



9991AB

# Complementary

The Complementary color scheme is a pair of colors which are on the opposite of each other on the color wheel.



AA907E



7E98AA

# Split Complementary

Split-complementary colors differ from the complementary color scheme. The scheme consists of three colors, the original color and two neighbors of the complement color.



8896AF



AA907E



729CA2

# Square

The Square scheme is like the rectangle color scheme, but the four colors are evenly spaced on the color wheel.



AA907E



819B88



799AAC



A78DA1

# Rectangle

The Rectangle color scheme consists of four colors that form a rectangle on the color wheel.



AA907E



95977C



799AAC



9393AD



# Sweetspot

The Sweet Spot groups the original color and five complimentary colors.



AA907E



DED3CC



AA7E98



706A65



F0F0F0



707070



# Same Dimension

The Same Dimension uses a secret algorithm to generate beautiful new colors.



AA907E



DEB599



AAA67E



544F4C



943D00



140800



# Inverse Universe

The Inverse Universe completely reimagines the original color for something new.



7E98AA



99C2DE



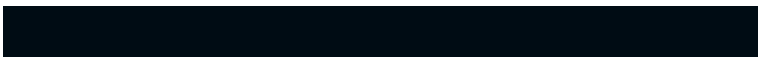
7E82AA



4C5154



005794

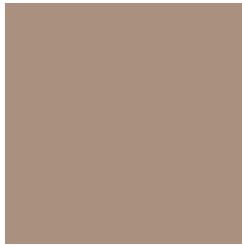


000C14



# Previews

## White Background



This preview shows how the Hex color AA907E looks on a white background.

## Color Contrast Check

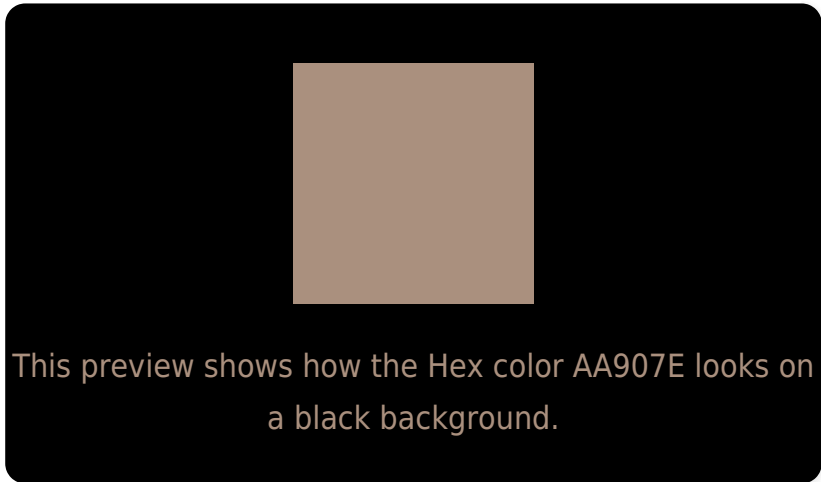
Large Text (above 18pt) WCAG AA ✓ Pass

Any Text WCAG AA × Fail

Large Text (above 18pt) WCAG AAA × Fail

Any Text WCAG AAA × Fail

# Black Background



## Color Contrast Check

Large Text (above 18pt) WCAG AA ✓ Pass

Any Text WCAG AA ✓ Pass

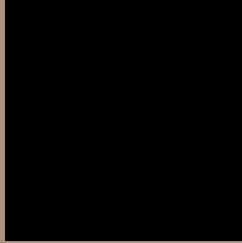
Large Text (above 18pt) WCAG AAA ✓ Pass

Any Text WCAG AAA ✓ Pass

If you want to check with other color combinations, try the [Color Contrast Checker](#).



## Hex AA907E Background



This preview shows how black text looks on a background with the Hex color AA907E.



This preview shows how white text looks on a background with the Hex color AA907E.

# Color Blindness Simulation

Color vision deficiency is a very complex topic, and I could not describe the different causes any better than Wikipedia does, so if you want to learn more, you should check out their [article about color blindness](#).

## Dichromacy





**Tritanopia**  
AD8C97

# Trichromacy



**Original Color**  
AA907E

**Protanomaly**  
A1937F

**Deuteranomaly**  
AB8F7E

**Tritanomaly**  
AC8D8E

# Monochromacy



**Original Color**  
AA907E

**Achromatopsia**  
969696

**Achromatomaly**  
9D948D

# CSS Examples

## Text

The CSS property to change the color of the text to Hex AA907E is called "color". The color property can be set on classes, ids or directly on the HTML element.

This example shows how text in the color #AA907E looks like.

```
.text, #text, p{  
    color:#AA907E  
}
```

If you want to add a text shadow in that color use the text-shadow property, you can generate a text shadow directly with our [CSS Text Shadow Generator](#).

Here you see how black text with a 4 pixel #AA907E colored shadow looks like.

```
.shadow{ text-shadow: 4px 4px 2px #AA907E
}
```

## Border

The CSS property to change the border of an element to Hex AA907E is called "border". The border property can be set on classes, ids or directly on the HTML element.

This example shows the color as border, it can be applied via the CSS property "border" or "border-color".

```
.border, #border, table{ border:4px solid
#AA907E }
```

If only the border color should be changed use the property `border-color`.

```
.border{ border-color:#AA907E }
```

If you want to add a box shadow in that color use:

Here you see how a box with a 4 pixel #AA907E colored shadow looks like.

```
.boxshadow{ -moz-box-shadow:4px 4px 4px  
4px #AA907E; -webkit-box-shadow:4px 4px  
4px 4px #AA907E; box-shadow:4px 4px 4px  
4px #AA907E }
```

# Background

The CSS property to change the background color of an element to Hex AA907E is called "background". The background property can be set on classes, ids or directly on the HTML element.

```
.background, #background, body{  
background:#AA907E }
```

If only the background color should be changed can be used:

```
.background{ background-color:#AA907E }
```

This example shows the color as background, it is applied via the CSS property "background".

To optimize and compress your CSS code, you can use our [online CSS compressor and optimizer](#) based on csstidy. If you want to create a linear or radial gradient as background or border, check our [CSS Gradient Generator](#).



Hey! You found this booklet interesting? Support Converting Colors with the new Membership Option!

The pro membership hides all ads, plus gives you double the colors in the color bucket, and more awesome pro features!

**[Learn more, Memberships starting at \\$2.50/m!](#)**

**Follow me  
on Twitter!**

@ConvertingColor