

# Converting Colors

Hex(AA9784)

Have a look what the booklet for  
Hex(AA9784) contains.

<b>Hex(AA9784)</b> .....	3
<b><i>Conversions</i></b> .....	4
<b><i>Details</i></b> .....	6
<b><i>Harmonies</i></b> .....	11
<b><i>Previews</i></b> .....	23
<b><i>Color Blindness Simulation</i></b> .....	26
<b><i>CSS Examples</i></b> .....	29

# **Color**

**Hex(AA9784)**

# Conversions

## Conversions Part 1

<b>Format</b>	<b>Color</b>
Hex	AA9784
RGB	170, 151, 132
RGB Percent	67%, 59%, 52%
CMY	0.3333, 0.4078, 0.4824
CMYK	0.00, 0.11, 0.22, 0.33
HSL	30°, 18%, 59%
HSV	30°, 22%, 67%
XYZ	31.8090, 32.3452, 26.3965
YIQ	154.5150, 17.4230, -1.8810

# Conversions

## Conversions Part 2

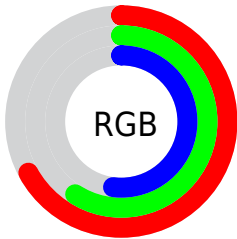
Format	Color
<a href="#">RYB</a>	<a href="#">170, 170, 132</a>
Decimal	<a href="#">11179908</a>
CIELab	<a href="#">63.63, 3.92, 12.58</a>
CIElCh	<a href="#">64, 13.178, 72.687</a>
Yxy	<a href="#">32.3452, 0.3513, 0.3572</a>
Android (android.graphics.Color)	<a href="#">4289369988 (0xFFAA9784)</a>
YUV	<a href="#">154.5150, -11.0999, 13.5803</a>
Hunter-Lab	<a href="#">56.8728, 0.3077, 12.2926</a>

# Details

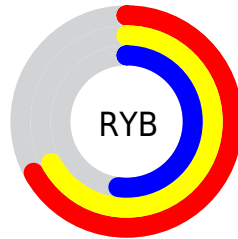
The Hex color **AA9784** is a light color, and the websafe version is hex **999999**. A complement of this color would be **8497AA**, and the grayscale version is **9B9B9B**.

A 20% lighter version of the original color is **E2CDB9**, and **756453** is the 20% darker color. If you saturate the color by 10%, you get **AA8E73**, and if you desaturate by 10%, it is **AA9F95**.

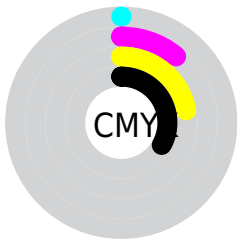
# Distribution



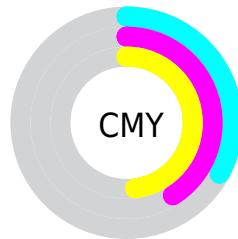
- Red (67%)
- Green (59%)
- Blue (52%)



- Red (67%)
- Yellow (67%)
- Blue (52%)



- Cyan (0%)
- Magenta (11%)
- Yellow (22%)
- Black (33%)



- Cyan (33%)
- Magenta (41%)
- Yellow (48%)

# Brightness & Saturation Gradients

These gradients show how the Hex color AA9784 changes by changing the brightness by 10 percent. The first figure shows a shift by +10% for each color and the second figure -10%.

Similar to the brightness gradients but the following saturation gradients show a change of the Hex color AA9784 by changing the saturation by 10% instead.





AA9784



AA9784

FFFFFF



8F7D6B



E2CDB9



756453



FEE9D5



5C4C3B



FFFFF1



443626



2D2011



180A00



000000



AA9784



AA9784



AA8E73



AA9F95

■ AA8662

■ AAA8A6

■ AA7D51

■ AAB0B7

■ AA7540

■ AAB9C8

■ AA6C2F

■ AAC1D9

■ AA641E

■ AACAEA

■ AA5C0D

■ AAD2FB

■ AA5500

■ AADBFF

■ AA E3FF

# Harmonies

## Analogous

The Analogous color harmony consists of three colors that are next to each other on the color wheel.



B1948B



AA9784



9E9B83

# Triad

The Triadic color harmony groups three colors that are evenly spaced from another and form a triangle on the color wheel.



AA9784



7DA19F



A296AB

# Complementary

The Complementary color scheme is a pair of colors which are on the opposite of each other on the color wheel.



AA9784



8497AA

# Split Complementary

Split-complementary colors differ from the complementary color scheme. The scheme consists of three colors, the original color and two neighbors of the complement color.



9499B1



AA9784



7DA0AA

# Square

The Square scheme is like the rectangle color scheme, but the four colors are evenly spaced on the color wheel.



AA9784



84A093



869DB0



AE93A1

# Rectangle

The Rectangle color scheme consists of four colors that form a rectangle on the color wheel.



AA9784



959D86



869DB0



9E97AE



# Sweetspot

The Sweet Spot groups the original color and five complimentary colors.



AA9784



DED6CE



AA8497



706C67



F0F0F0



707070



# Same Dimension

The Same Dimension uses a secret algorithm to generate beautiful new colors.



AA9784



DEC0A2



AAAA84



54504C



944A00



140A00



# Inverse Universe

The Inverse Universe completely reimagines the original color for something new.



8497AA



A2C0DE



8484AA



4C5054



004A94

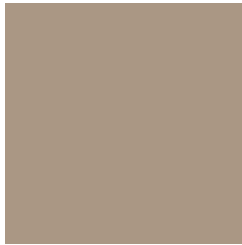


000A14



# Previews

## White Background



This preview shows how the Hex color AA9784 looks on a white background.

## Color Contrast Check

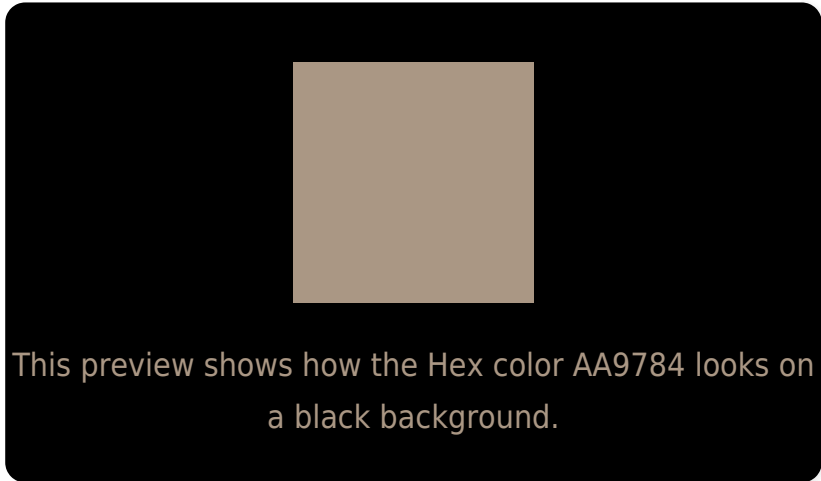
Large Text (above 18pt) WCAG AA × Fail

Any Text WCAG AA × Fail

Large Text (above 18pt) WCAG AAA × Fail

Any Text WCAG AAA × Fail

# Black Background



## Color Contrast Check

Large Text (above 18pt) WCAG AA ✓ Pass

Any Text WCAG AA ✓ Pass

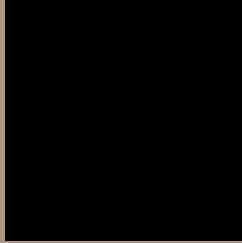
Large Text (above 18pt) WCAG AAA ✓ Pass

Any Text WCAG AAA ✓ Pass

If you want to check with other color combinations, try the [Color Contrast Checker](#).



## Hex AA9784 Background



This preview shows how black text looks on a background with the Hex color AA9784.



This preview shows how white text looks on a background with the Hex color AA9784.

# Color Blindness Simulation

Color vision deficiency is a very complex topic, and I could not describe the different causes any better than Wikipedia does, so if you want to learn more, you should check out their [article about color blindness](#).


## Dichromacy



**Original Color**  
AA9784

**Protanopia**  
A29A85

**Deuteranopia**  
B19485



**Tritanopia**  
AD939F

# Trichromacy



**Original Color**  
AA9784

**Protanomaly**  
A59985

**Deuteranomaly**  
AE9585

**Tritanomaly**  
AC9495

# Monochromacy



**Original Color**  
AA9784

**Achromatopsia**  
9B9B9B

**Achromatomaly**  
A09A93

# CSS Examples

## Text

The CSS property to change the color of the text to Hex AA9784 is called "color". The color property can be set on classes, ids or directly on the HTML element.

This example shows how text in the color #AA9784 looks like.

```
.text, #text, p{  
    color:#AA9784  
}
```

If you want to add a text shadow in that color use the text-shadow property, you can generate a text shadow directly with our [CSS Text Shadow Generator](#).

Here you see how black text with a 4 pixel #AA9784 colored shadow looks like.

```
.shadow{ text-shadow: 4px 4px 2px #AA9784
}
```

## Border

The CSS property to change the border of an element to Hex AA9784 is called "border". The border property can be set on classes, ids or directly on the HTML element.

This example shows the color as border, it can be applied via the CSS property "border" or "border-color".

```
.border, #border, table{ border:4px solid
#AA9784 }
```

If only the border color should be changed use the property `border-color`.

```
.border{ border-color:#AA9784 }
```

If you want to add a box shadow in that color use:

Here you see how a box with a 4 pixel #AA9784 colored shadow looks like.

```
.boxshadow{ -moz-box-shadow:4px 4px 4px  
4px #AA9784; -webkit-box-shadow:4px 4px  
4px 4px #AA9784; box-shadow:4px 4px 4px  
4px #AA9784 }
```

# Background

The CSS property to change the background color of an element to Hex AA9784 is called "background". The background property can be set on classes, ids or directly on the HTML element.

```
.background, #background, body{  
background:#AA9784 }
```

If only the background color should be changed can be used:

```
.background{ background-color:#AA9784 }
```

This example shows the color as background, it is applied via the CSS property "background".

To optimize and compress your CSS code, you can use our [online CSS compressor and optimizer](#) based on csstidy. If you want to create a linear or radial gradient as background or border, check our [CSS Gradient Generator](#).



Hey! You found this booklet interesting? Support Converting Colors with the new Membership Option!

The pro membership hides all ads, plus gives you double the colors in the color bucket, and more awesome pro features!

**[Learn more, Memberships starting at \\$2.50/m!](#)**

**Follow me  
on Twitter!**

@ConvertingColor