

Converting Colors

Hex(AA99A4)

Have a look what the booklet for
Hex(AA99A4) contains.

| | |
|--|----|
| Hex(AA99A4) | 3 |
| <i>Conversions</i> | 4 |
| <i>Details</i> | 6 |
| <i>Harmonies</i> | 11 |
| <i>Previews</i> | 23 |
| <i>Color Blindness Simulation</i> | 26 |
| <i>CSS Examples</i> | 29 |

Color

Hex(AA99A4)

Conversions

Conversions Part 1

| Format | Color |
|-------------|---------------------------|
| Hex | AA99A4 |
| RGB | 170, 153, 164 |
| RGB Percent | 67%, 60%, 64% |
| CMY | 0.3333, 0.4000, 0.3569 |
| CMYK | 0.00, 0.10, 0.04, 0.33 |
| HSL | 321°, 9%, 63% |
| HSV | 321°, 10%, 67% |
| XYZ | 34.6696, 34.0088, 39.8590 |
| YIQ | 159.3370, 6.6010, 7.0250 |

Conversions

Conversions Part 2

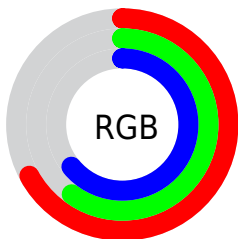
| Format | Color |
|-------------------------------------|--|
| RYB | 170, 153, 164 |
| Decimal | 11180452 |
| CIELab | 64.97, 8.24, -3.47 |
| CIELCh | 65, 8.944, 337.183 |
| Yxy | 34.0088, 0.3194, 0.3133 |
| Android (android.graphics.Color) | 4289370532 (0xFFAA99A4) |
| YUV | 159.3370, 2.2989, 9.3515 |
| Hunter-Lab | 58.3171, 4.0637, 0.2980 |

Details

The Hex color **AA99A4** is a light color, and the websafe version is hex **999999**. A complement of this color would be **99AA9F**, and the grayscale version is **9F9F9F**.

A 20% lighter version of the original color is **E1CFDB**, and **766670** is the 20% darker color. If you saturate the color by 10%, you get **AA889E**, and if you desaturate by 10%, it is **AAAAAA**.

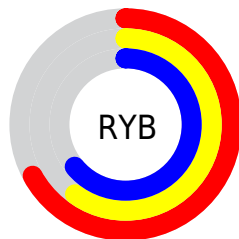
Distribution



Red (67%)

Green (60%)

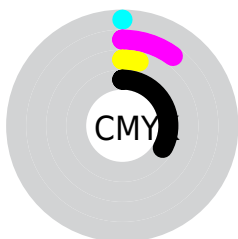
Blue (64%)



Red (67%)

Yellow (60%)

Blue (64%)

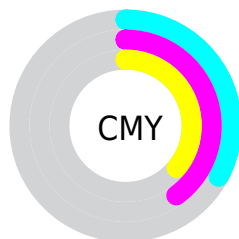


Cyan (0%)

Magenta (10%)

Yellow (4%)

Black (33%)



Cyan (33%)

Magenta (40%)

Yellow (36%)

Brightness & Saturation Gradients

These gradients show how the Hex color AA99A4 changes by changing the brightness by 10 percent. The first figure shows a shift by +10% for each color and the second figure -10%.

Similar to the brightness gradients but the following saturation gradients show a change of the Hex color AA99A4 by changing the saturation by 10% instead.



AA99A4



AA99A4

FFFFFF



8F7F8A



E1CFDB



766670



FEECF7



5D4E58



453741



2F222B



1B0C16



000000



AA99A4



AA99A4



AA889E



AAAAAA

■ AA7798

■ AABBB0

■ AA6692

■ AACCB6

■ AA558C

■ AADDBC

■ AA4486

■ AAEEC2

■ AA3380

■ AAFFC8

■ AA227A

■ AAFFCE

■ AA1174

■ AAFFD4

■ AA006E

■ AAFFDA

Harmonies

Analogous

The Analogous color harmony consists of three colors that are next to each other on the color wheel.



A29BAA



AA99A4



AF989C

Triad

The Triadic color harmony groups three colors that are evenly spaced from another and form a triangle on the color wheel.



AA99A4



A29E8E



8AA2A7

Complementary

The Complementary color scheme is a pair of colors which are on the opposite of each other on the color wheel.



AA99A4



99AA9F

Split Complementary

Split-complementary colors differ from the complementary color scheme. The scheme consists of three colors, the original color and two neighbors of the complement color.



8BA29F



AA99A4



99A091

Square

The Square scheme is like the rectangle color scheme, but the four colors are evenly spaced on the color wheel.



AA99A4



AA9B8F



91A297



8FA0AC

Rectangle

The Rectangle color scheme consists of four colors that form a rectangle on the color wheel.



AA99A4



AF9997



91A297



8AA2A5

Sweetspot

The Sweet Spot groups the original color and five complimentary colors.



AA99A4



DED7DC



9F99AA



706C6F



F0F0F0



707070

Same Dimension

The Same Dimension uses a secret algorithm to generate beautiful new colors.



AA99A4



DEC3D4



AA999C



544C51



940060



14000D

Inverse Universe

The Inverse Universe completely reimagines the original color for something new.



AA99A4



DEC3D4



99AAA7



544C51



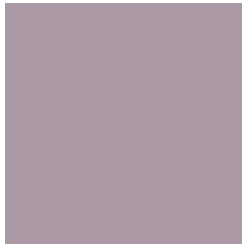
940060



14000D

Previews

White Background



This preview shows how the Hex color AA99A4 looks on a white background.

Color Contrast Check

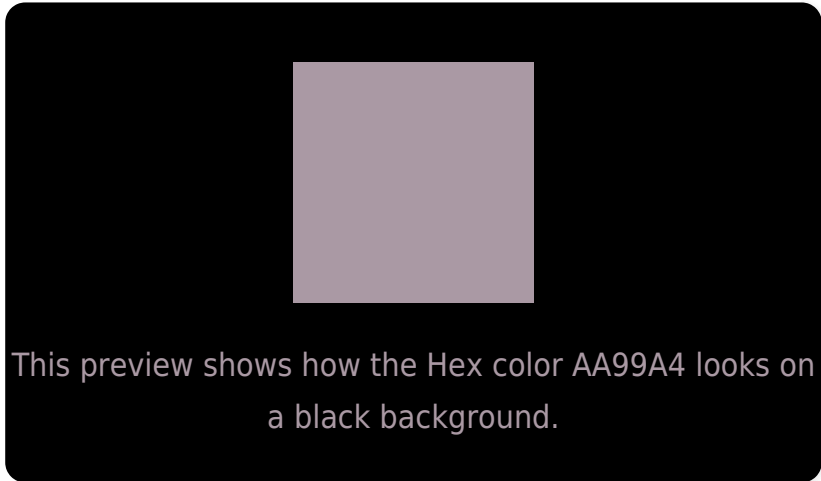
Large Text (above 18pt) WCAG AA × Fail

Any Text WCAG AA × Fail

Large Text (above 18pt) WCAG AAA × Fail

Any Text WCAG AAA × Fail

Black Background



Color Contrast Check

Large Text (above 18pt) WCAG AA ✓ Pass

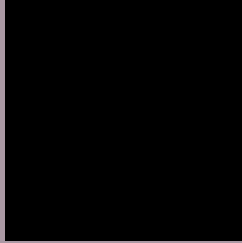
Any Text WCAG AA ✓ Pass

Large Text (above 18pt) WCAG AAA ✓ Pass

Any Text WCAG AAA ✓ Pass

If you want to check with other color combinations, try the [Color Contrast Checker](#).

Hex AA99A4 Background



This preview shows how black text looks on a background with the Hex color AA99A4.



This preview shows how white text looks on a background with the Hex color AA99A4.

Color Blindness Simulation

Color vision deficiency is a very complex topic, and I could not describe the different causes any better than Wikipedia does, so if you want to learn more, you should check out their [article about color blindness](#).


Dichromacy



Original Color
AA99A4

Protanopia
9E9DA6

Deuteranopia
AA99A4



Tritanopia
AA99A5

Trichromacy



Original Color
AA99A4

Protanomaly
A29CA5

Deuteranomaly
AA99A4

Tritanomaly
AA99A5

Monochromacy



Original Color
AA99A4

Achromatopsia
9F9F9F

Achromatomaly
A39DA1

CSS Examples

Text

The CSS property to change the color of the text to Hex AA99A4 is called "color". The color property can be set on classes, ids or directly on the HTML element.

This example shows how text in the color #AA99A4 looks like.

```
.text, #text, p{  
    color:#AA99A4  
}
```

If you want to add a text shadow in that color use the text-shadow property, you can generate a text shadow directly with our [CSS Text Shadow Generator](#).

Here you see how black text with a 4 pixel #AA99A4 colored shadow looks like.

```
.shadow{ text-shadow: 4px 4px 2px #AA99A4
}
```

Border

The CSS property to change the border of an element to Hex AA99A4 is called "border". The border property can be set on classes, ids or directly on the HTML element.

This example shows the color as border, it can be applied via the CSS property "border" or "border-color".

```
.border, #border, table{ border:4px solid
#AA99A4 }
```

If only the border color should be changed use the property `border-color`.

```
.border{ border-color:#AA99A4 }
```

If you want to add a box shadow in that color use:

Here you see how a box with a 4 pixel #AA99A4 colored shadow looks like.

```
.boxshadow{ -moz-box-shadow:4px 4px 4px  
4px #AA99A4; -webkit-box-shadow:4px 4px  
4px 4px #AA99A4; box-shadow:4px 4px 4px  
4px #AA99A4 }
```

Background

The CSS property to change the background color of an element to Hex AA99A4 is called "background". The background property can be set on classes, ids or directly on the HTML element.

```
.background, #background, body{  
background:#AA99A4 }
```

If only the background color should be changed can be used:

```
.background{ background-color:#AA99A4 }
```

This example shows the color as background, it is applied via the CSS property "background".

To optimize and compress your CSS code, you can use our [online CSS compressor and optimizer](#) based on csstidy. If you want to create a linear or radial gradient as background or border, check our [CSS Gradient Generator](#).

Hey! You found this booklet interesting? Support Converting Colors with the new Membership Option!

The pro membership hides all ads, plus gives you double the colors in the color bucket, and more awesome pro features!

[Learn more, Memberships starting at \\$2.50/m!](#)

**Follow me
on Twitter!**

@ConvertingColor