

Converting Colors

Hex(AB6D6D)

Have a look what the booklet for
Hex(AB6D6D) contains.

Hex(AB6D6D)	3
<i>Conversions</i>	4
<i>Details</i>	6
<i>Harmonies</i>	11
<i>Previews</i>	23
<i>Color Blindness Simulation</i>	26
<i>CSS Examples</i>	29

Color

Hex(**AB6D6D**)

Conversions

Conversions Part 1

Format	Color
Hex	AB6D6D
RGB	171, 109, 109
RGB Percent	67%, 43%, 43%
CMY	0.3294, 0.5725, 0.5725
CMYK	0.00, 0.36, 0.36, 0.33
HSL	0°, 27%, 55%
HSV	0°, 36%, 67%
XYZ	25.0235, 20.6993, 17.1445
YIQ	127.5380, 36.9520, 13.1440

Conversions

Conversions Part 2

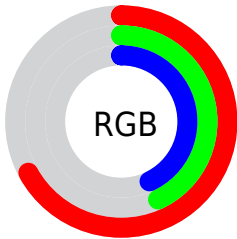
Format	Color
R _Y B	171, 109, 109
Decimal	11234669
CIE Lab	52.62, 24.69, 10.31
CIE LCh	53, 26.755, 22.665
Yxy	20.6993, 0.3980, 0.3293
Android (android.graphics.Color)	4289424749 (0xFFAB6D6D)
YUV	127.5380, -9.1392, 38.1162
Hunter-Lab	45.4965, 18.5579, 9.5053

Details

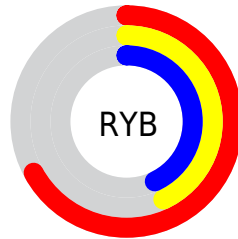
The Hex color **AB6D6D** is a dark color, and the websafe version is hex **996666**. A complement of this color would be **6DABAB**, and the grayscale version is **808080**.

A 20% lighter version of the original color is **E4A1A0**, and **753C3E** is the 20% darker color. If you saturate the color by 10%, you get **AB5C5C**, and if you desaturate by 10%, it is **AB7E7E**.

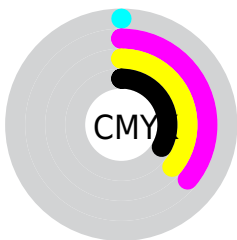
Distribution



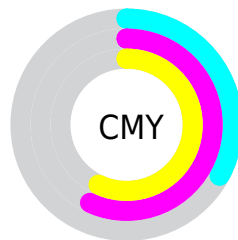
- Red (67%)
- Green (43%)
- Blue (43%)



- Red (67%)
- Yellow (43%)
- Blue (43%)



- Cyan (0%)
- Magenta (36%)
- Yellow (36%)
- Black (33%)



- Cyan (33%)
- Magenta (57%)
- Yellow (57%)

Brightness & Saturation Gradients

These gradients show how the Hex color AB6D6D changes by changing the brightness by 10 percent. The first figure shows a shift by +10% for each color and the second figure -10%.

Similar to the brightness gradients but the following saturation gradients show a change of the Hex color AB6D6D by changing the saturation by 10% instead.

 AB6D6D

 AB6D6D

FFFFFF

 8F5455

 E4A1A0

 753C3E

 FFBCBB

 5A2528

 FFD8D7

 410F14

 FFF5F4

 2B0000

 000000

 AB6D6D

 AB6D6D

 AB5C5C

 AB7E7E

 AB4B4B

 AB8F8F

 AB3A3A

 ABA0A0

 AB2929

 ABB1B1

 AB1717

 ABC2C2

 AB0606

 ABD4D4

 AB0000

 ABE5E5

 ABF6F6

 ABFFFF

Harmonies

Analogous

The Analogous color harmony consists of three colors that are next to each other on the color wheel.



A76D84



AB6D6D



A3725A

Triad

The Triadic color harmony groups three colors that are evenly spaced from another and form a triangle on the color wheel.



AB6D6D



618761



5581AB

Complementary

The Complementary color scheme is a pair of colors which are on the opposite of each other on the color wheel.



AB6D6D



6DABAB

Split Complementary

Split-complementary colors differ from the complementary color scheme. The scheme consists of three colors, the original color and two neighbors of the complement color.



3587A1



AB6D6D



458A77

Square

The Square scheme is like the rectangle color scheme, but the four colors are evenly spaced on the color wheel.



AB6D6D



7B8253



2F8A8E



797AA8

Rectangle

The Rectangle color scheme consists of four colors that form a rectangle on the color wheel.



AB6D6D



997852



2F8A8E



4984A9

Sweetspot

The Sweet Spot groups the original color and five complimentary colors.



AB6D6D



DEC5C5



AB6DAB



706262



F0F0F0



707070

Same Dimension

The Same Dimension uses a secret algorithm to generate beautiful new colors.



AB6D6D



DE7C7C



AB8C6D



574E4E



960000



170000

Inverse Universe

The Inverse Universe completely reimagines the original color for something new.



6DABAB



7CDEDE



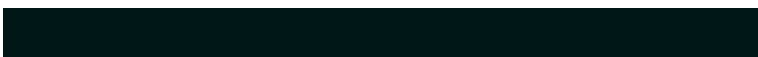
6D8CAB



4E5757



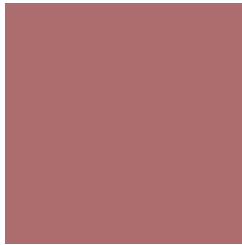
009696



001717

Previews

White Background



This preview shows how the Hex color AB6D6D looks on a white background.

Color Contrast Check

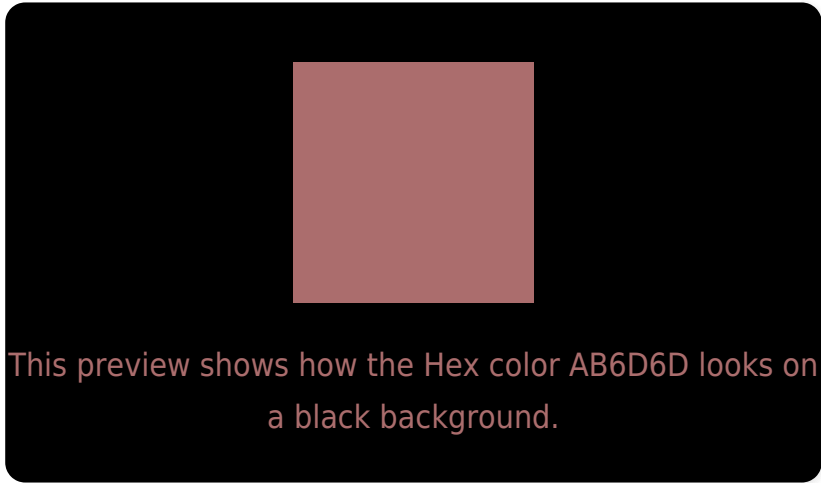
Large Text (above 18pt) WCAG AA ✓ Pass

Any Text WCAG AA ✗ Fail

Large Text (above 18pt) WCAG AAA ✗ Fail

Any Text WCAG AAA ✗ Fail

Black Background



Color Contrast Check

Large Text (above 18pt) WCAG AA ✓ Pass

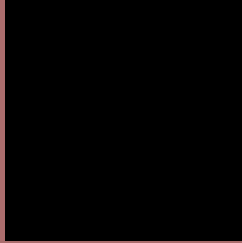
Any Text WCAG AA ✓ Pass

Large Text (above 18pt) WCAG AAA ✓ Pass

Any Text WCAG AAA × Fail

If you want to check with other color combinations, try the [Color Contrast Checker](#).

Hex AB6D6D Background



This preview shows how black text looks on a background with the Hex color AB6D6D.



This preview shows how white text looks on a background with the Hex color AB6D6D.

Color Blindness Simulation

Color vision deficiency is a very complex topic, and I could not describe the different causes any better than Wikipedia does, so if you want to learn more, you should check out their [article about color blindness](#).

Dichromacy



Original Color
AB6D6D

Protanopia
827D76

Deuteranopia
91796B



Tritanopia
AC6C74

Trichromacy



Original Color
AB6D6D

Protanomaly
917773

Deuteranomaly
9A756C

Tritanomaly
AC6C71

Monochromacy



Original Color
AB6D6D

Achromatopsia
808080

Achromatomaly
907979

CSS Examples

Text

The CSS property to change the color of the text to Hex AB6D6D is called "color". The color property can be set on classes, ids or directly on the HTML element.

This example shows how text in the color #AB6D6D looks like.

```
.text, #text, p{  
    color:#AB6D6D  
}
```

If you want to add a text shadow in that color use the text-shadow property, you can generate a text shadow directly with our [CSS Text Shadow Generator](#).

Here you see how black text with a 4 pixel #AB6D6D colored shadow looks like.

```
.shadow{ text-shadow: 4px 4px 2px #AB6D6D
}
```

Border

The CSS property to change the border of an element to Hex AB6D6D is called "border". The border property can be set on classes, ids or directly on the HTML element.

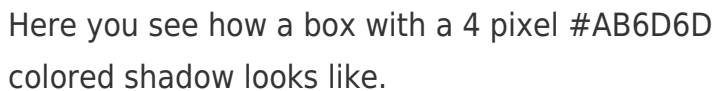
This example shows the color as border, it can be applied via the CSS property "border" or "border-color".

```
.border, #border, table{ border:4px solid
#AB6D6D }
```

If only the border color should be changed use the property `border-color`.

```
.border{ border-color:#AB6D6D }
```

If you want to add a box shadow in that color use:



Here you see how a box with a 4 pixel `#AB6D6D` colored shadow looks like.

```
.boxshadow{ -moz-box-shadow:4px 4px 4px  
4px #AB6D6D; -webkit-box-shadow:4px 4px  
4px 4px #AB6D6D; box-shadow:4px 4px 4px  
4px #AB6D6D }
```

Background

The CSS property to change the background color of an element to Hex AB6D6D is called "background". The background property can be set on classes, ids or directly on the HTML element.

```
.background, #background, body{  
background:#AB6D6D }
```

If only the background color should be changed can be used:

```
.background{ background-color:#AB6D6D }
```

This example shows the color as background, it is applied via the CSS property "background".

To optimize and compress your CSS code, you can use our [online CSS compressor and optimizer](#) based on csstidy. If you want to create a linear or radial gradient as background or border, check our [CSS Gradient Generator](#).

Hey! You found this booklet interesting? Support Converting Colors with the new Membership Option!

The pro membership hides all ads, plus gives you double the colors in the color bucket, and more awesome pro features!

[Learn more, Memberships starting at \\$2.50/m!](#)

**Follow me
on Twitter!**

@ConvertingColor