

Converting Colors

Hex(AB7D7F)

Have a look what the booklet for
Hex(AB7D7F) contains.

Hex(AB7D7F)	3
<i>Conversions</i>	4
<i>Details</i>	6
<i>Harmonies</i>	11
<i>Previews</i>	23
<i>Color Blindness Simulation</i>	26
<i>CSS Examples</i>	29

Color

Hex(AB7D7F)

Conversions

Conversions Part 1

Format	Color
Hex	AB7D7F
RGB	171, 125, 127
RGB Percent	67%, 49%, 50%
CMY	0.3294, 0.5098, 0.5020
CMYK	0.00, 0.27, 0.26, 0.33
HSL	357°, 21%, 58%
HSV	357°, 27%, 67%
XYZ	27.9590, 24.8575, 23.4030
YIQ	138.9820, 26.7740, 10.3740

Conversions

Conversions Part 2

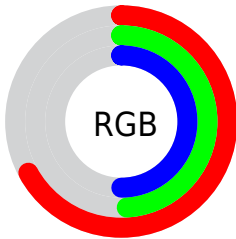
Format	Color
R_{YB}	171, 125, 127
Decimal	11238783
CIE _{Lab}	56.94, 18.15, 5.95
CIE _{LCh}	57, 19.100, 18.149
Yxy	24.8575, 0.3668, 0.3261
Android (android.graphics.Color)	4289428863 (0xFFAB7D7F)
YUV	138.9820, -5.9071, 28.0798
Hunter-Lab	49.8573, 12.8491, 7.0693

Details

The Hex color **AB7D7F** is a dark color, and the websafe version is hex **996666**. A complement of this color would be **7DABA9**, and the grayscale version is **8B8B8B**.

A 20% lighter version of the original color is **E3B2B4**, and **764C4E** is the 20% darker color. If you saturate the color by 10%, you get **AB6C6F**, and if you desaturate by 10%, it is **AB8E8F**.

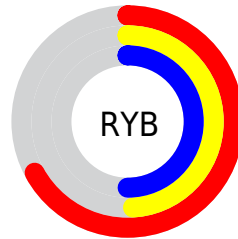
Distribution



Red (67%)

Green (49%)

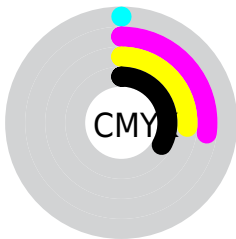
Blue (50%)



Red (67%)

Yellow (49%)

Blue (50%)

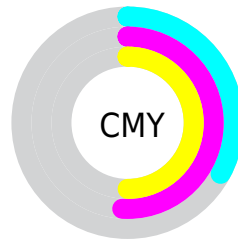


Cyan (0%)

Magenta (27%)

Yellow (26%)

Black (33%)



Cyan (33%)

Magenta (51%)

Yellow (50%)

Brightness & Saturation Gradients

These gradients show how the Hex color AB7D7F changes by changing the brightness by 10 percent. The first figure shows a shift by +10% for each color and the second figure -10%.

Similar to the brightness gradients but the following saturation gradients show a change of the Hex color AB7D7F by changing the saturation by 10% instead.

 AB7D7F

 AB7D7F

FFFFFF

 906466

 E3B2B4

 764C4E

 FFCDCF

 5C3537

 FFEAEB

 441F22

 2C090C

 0D0000

 000000

 AB7D7F

 AB7D7F

 AB6C6F

 AB8E8F

 AB5B5E

 AB9FA0

 AB4A4E

 ABB0B0

 AB393E

 ABC1C0

 AB272D

 ABD2D1

 AB161D

 ABE4E1

 AB050D

 ABF5F1

 AB0007

 ABFFFF

Harmonies

Analogous

The Analogous color harmony consists of three colors that are next to each other on the color wheel.



A67D90



AB7D7F



A78071

Triad

The Triadic color harmony groups three colors that are evenly spaced from another and form a triangle on the color wheel.



AB7D7F



788F72



6C8CA9

Complementary

The Complementary color scheme is a pair of colors which are on the opposite of each other on the color wheel.



AB7D7F



7DABA9

Split Complementary

Split-complementary colors differ from the complementary color scheme. The scheme consists of three colors, the original color and two neighbors of the complement color.



5C90A1



AB7D7F



669281

Square

The Square scheme is like the rectangle color scheme, but the four colors are evenly spaced on the color wheel.



AB7D7F



8B8B69



5A9292



8387A8

Rectangle

The Rectangle color scheme consists of four colors that form a rectangle on the color wheel.



AB7D7F



A0836A



5A9292



668EA7

Sweetspot

The Sweet Spot groups the original color and five complimentary colors.



AB7D7F



DECCCD



A97DAB



706565



F0F0F0



707070

Same Dimension

The Same Dimension uses a secret algorithm to generate beautiful new colors.



AB7D7F



DE979A



AB927D



574E4E



960007



170001

Inverse Universe

The Inverse Universe completely reimagines the original color for something new.



AB7D7F



DE979A



7D96AB



574E4E



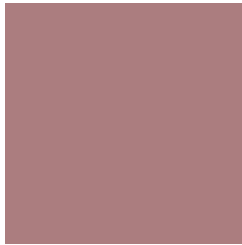
960007



170001

Previews

White Background



This preview shows how the Hex color AB7D7F looks on a white background.

Color Contrast Check

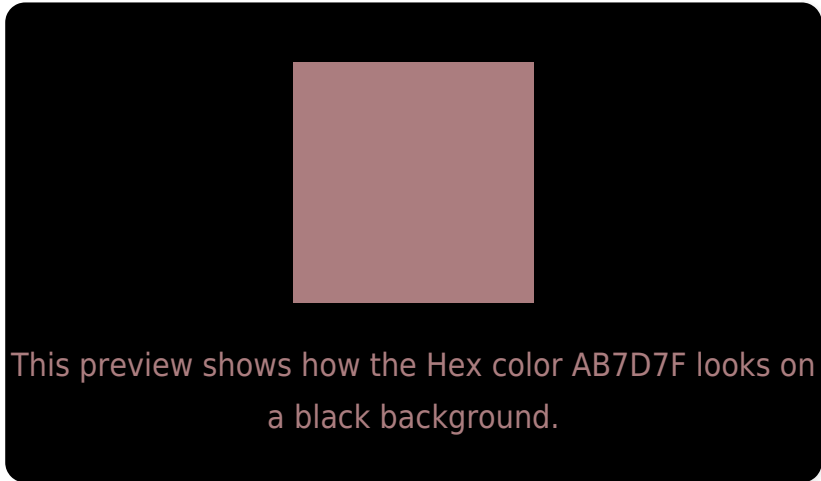
Large Text (above 18pt) WCAG AA ✓ Pass

Any Text WCAG AA × Fail

Large Text (above 18pt) WCAG AAA × Fail

Any Text WCAG AAA × Fail

Black Background



Color Contrast Check

Large Text (above 18pt) WCAG AA ✓ Pass

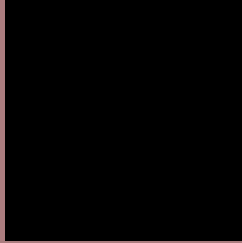
Any Text WCAG AA ✓ Pass

Large Text (above 18pt) WCAG AAA ✓ Pass

Any Text WCAG AAA × Fail

If you want to check with other color combinations, try the [Color Contrast Checker](#).

Hex AB7D7F Background



This preview shows how black text looks on a background with the Hex color AB7D7F.

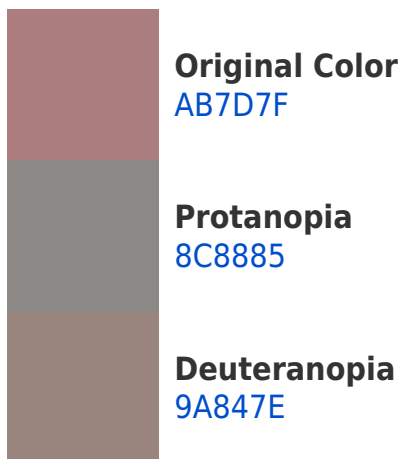


This preview shows how white text looks on a background with the Hex color AB7D7F.

Color Blindness Simulation

Color vision deficiency is a very complex topic, and I could not describe the different causes any better than Wikipedia does, so if you want to learn more, you should check out their [article about color blindness](#).

Dichromacy





Tritanopia
AC7C85

Trichromacy



Original Color
AB7D7F

Protanomaly
978483

Deuteranomaly
A0817E

Tritanomaly
AC7C83

Monochromacy



Original Color
AB7D7F

Achromatopsia
8B8B8B

Achromatomaly
978687

CSS Examples

Text

The CSS property to change the color of the text to Hex AB7D7F is called "color". The color property can be set on classes, ids or directly on the HTML element.

This example shows how text in the color #AB7D7F looks like.

```
.text, #text, p{  
    color:#AB7D7F  
}
```

If you want to add a text shadow in that color use the text-shadow property, you can generate a text shadow directly with our [CSS Text Shadow Generator](#).

Here you see how black text with a 4 pixel #AB7D7F colored shadow looks like.

```
.shadow{ text-shadow: 4px 4px 2px #AB7D7F
}
```

Border

The CSS property to change the border of an element to Hex AB7D7F is called "border". The border property can be set on classes, ids or directly on the HTML element.

This example shows the color as border, it can be applied via the CSS property "border" or "border-color".

```
.border, #border, table{ border:4px solid
#AB7D7F }
```

If only the border color should be changed use the property `border-color`.

```
.border{ border-color:#AB7D7F }
```

If you want to add a box shadow in that color use:

Here you see how a box with a 4 pixel #AB7D7F colored shadow looks like.

```
.boxshadow{ -moz-box-shadow:4px 4px 4px  
4px #AB7D7F; -webkit-box-shadow:4px 4px  
4px 4px #AB7D7F; box-shadow:4px 4px 4px  
4px #AB7D7F }
```

Background

The CSS property to change the background color of an element to Hex AB7D7F is called "background". The background property can be set on classes, ids or directly on the HTML element.

```
.background, #background, body{  
background:#AB7D7F }
```

If only the background color should be changed can be used:

```
.background{ background-color:#AB7D7F }
```

This example shows the color as background, it is applied via the CSS property "background".

To optimize and compress your CSS code, you can use our [online CSS compressor and optimizer](#) based on csstidy. If you want to create a linear or radial gradient as background or border, check our [CSS Gradient Generator](#).

Hey! You found this booklet interesting? Support Converting Colors with the new Membership Option!

The pro membership hides all ads, plus gives you double the colors in the color bucket, and more awesome pro features!

[Learn more, Memberships starting at \\$2.50/m!](#)

**Follow me
on Twitter!**

@ConvertingColor