

Converting Colors

Hex(AB7F4D)

Have a look what the booklet for
Hex(AB7F4D) contains.

Hex(AB7F4D)	3
<i>Conversions</i>	4
<i>Details</i>	6
<i>Harmonies</i>	11
<i>Previews</i>	23
<i>Color Blindness Simulation</i>	26
<i>CSS Examples</i>	29

Color

Hex(AB7F4D)

Conversions

Conversions Part 1

Format	Color
Hex	AB7F4D
RGB	171, 127, 77
RGB Percent	67%, 50%, 30%
CMY	0.3294, 0.5020, 0.6980
CMYK	0.00, 0.26, 0.55, 0.33
HSL	32°, 38%, 49%
HSV	32°, 55%, 67%
XYZ	25.7235, 24.3725, 10.3698
YIQ	134.4560, 42.2740, -6.2220

Conversions

Conversions Part 2

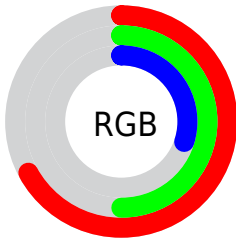
Format	Color
R_{YB}	160, 171, 77
Decimal	11239245
CIE _{Lab}	56.46, 11.10, 33.59
CIE _{LCh}	56, 35.380, 71.719
Yxy	24.3725, 0.4254, 0.4031
Android (android.graphics.Color)	4289429325 (0xFFAB7F4D)
YUV	134.4560, -28.3258, 32.0491
Hunter-Lab	49.3685, 6.6127, 22.1042

Details

The Hex color **AB7F4D** is a dark color, and the websafe version is hex **996633**. A complement of this color would be **4D79AB**, and the grayscale version is **878787**.

A 20% lighter version of the original color is **E5B47F**, and **744E1E** is the 20% darker color. If you saturate the color by 10%, you get **AB773C**, and if you desaturate by 10%, it is **AB875E**.

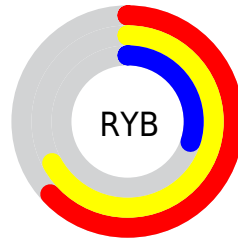
Distribution



Red (67%)

Green (50%)

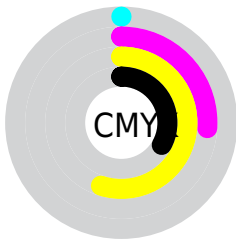
Blue (30%)



Red (63%)

Yellow (67%)

Blue (30%)

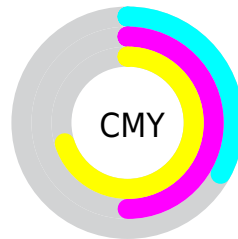


Cyan (0%)

Magenta (26%)

Yellow (55%)

Black (33%)



Cyan (33%)

Magenta (50%)

Yellow (70%)

Brightness & Saturation Gradients

These gradients show how the Hex color AB7F4D changes by changing the brightness by 10 percent. The first figure shows a shift by +10% for each color and the second figure -10%.

Similar to the brightness gradients but the following saturation gradients show a change of the Hex color AB7F4D by changing the saturation by 10% instead.

 AB7F4D

 AB7F4D

FFFFFF

 8F6635

 E5B47F

 744E1E

 FFCF99

 593707

 FFEBB4

 402200

 FFFF00

 270D00

 FFFFED

 000000

 AB7F4D

 AB7F4D

 AB773C

 AB875E

 AB6F2B

 AB8F6F

 AB671A

 AB9780

 AB5F09

 AB9F91

 AB5B00

 ABA7A2

 ABAFB4

 ABB7C5

 ABBFD6

 ABC7E7

Harmonies

Analogous

The Analogous color harmony consists of three colors that are next to each other on the color wheel.



BE7560



AB7F4D



8F894A

Triad

The Triadic color harmony groups three colors that are evenly spaced from another and form a triangle on the color wheel.



AB7F4D



009893



9A7BB6

Complementary

The Complementary color scheme is a pair of colors which are on the opposite of each other on the color wheel.



AB7F4D



4D79AB

Split Complementary

Split-complementary colors differ from the complementary color scheme. The scheme consists of three colors, the original color and two neighbors of the complement color.



6D86C3



AB7F4D



0096AF

Square

The Square scheme is like the rectangle color scheme, but the four colors are evenly spaced on the color wheel.



AB7F4D



459673



2F90C1



B7719B

Rectangle

The Rectangle color scheme consists of four colors that form a rectangle on the color wheel.



AB7F4D



798F52



2F90C1



8D7FBC

Sweetspot

The Sweet Spot groups the original color and five complimentary colors.



AB7F4D



DECDBA



AB4D7A



70665B



F0F0F0



707070

Same Dimension

The Same Dimension uses a secret algorithm to generate beautiful new colors.



AB7F4D



DE994B



A9AB4D



57534E



965000



170C00

Inverse Universe

The Inverse Universe completely reimagines the original color for something new.



4D79AB



4B90DE



4F4DAB



4E5257



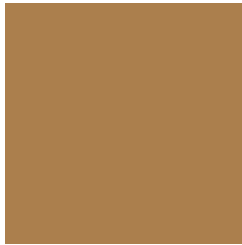
004696



000B17

Previews

White Background



This preview shows how the Hex color AB7F4D looks on a white background.

Color Contrast Check

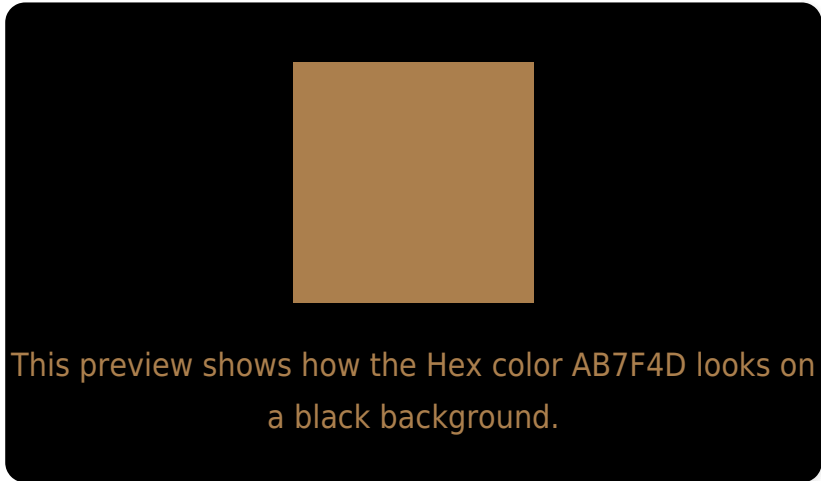
Large Text (above 18pt) WCAG AA ✓ Pass

Any Text WCAG AA × Fail

Large Text (above 18pt) WCAG AAA × Fail

Any Text WCAG AAA × Fail

Black Background



Color Contrast Check

Large Text (above 18pt) WCAG AA ✓ Pass

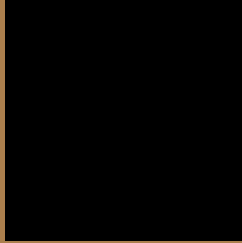
Any Text WCAG AA ✓ Pass

Large Text (above 18pt) WCAG AAA ✓ Pass

Any Text WCAG AAA × Fail

If you want to check with other color combinations, try the [Color Contrast Checker](#).

Hex AB7F4D Background



This preview shows how black text looks on a background with the Hex color AB7F4D.



This preview shows how white text looks on a background with the Hex color AB7F4D.

Color Blindness Simulation

Color vision deficiency is a very complex topic, and I could not describe the different causes any better than Wikipedia does, so if you want to learn more, you should check out their [article about color blindness](#).

Dichromacy



Original Color
AB7F4D

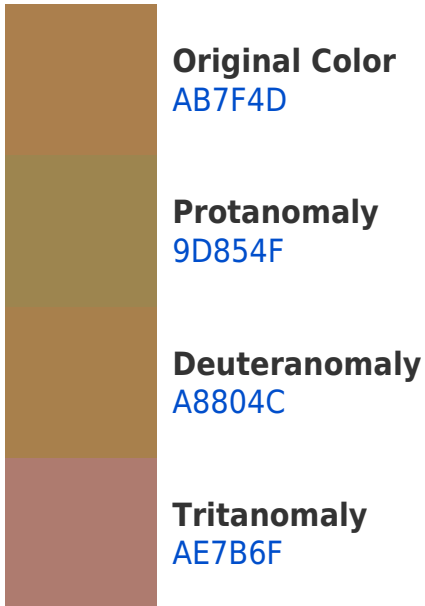
Protanopia
958850

Deuteranopia
A6814C

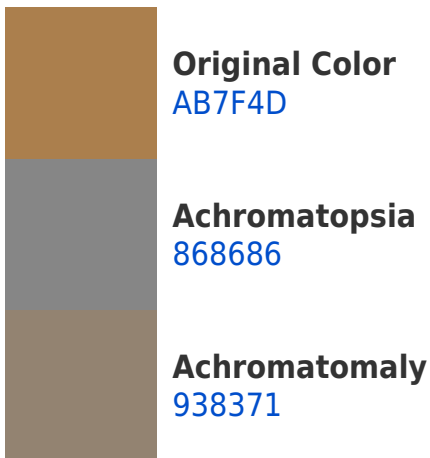


Tritanopia
AF7982

Trichromacy



Monochromacy



CSS Examples

Text

The CSS property to change the color of the text to Hex AB7F4D is called "color". The color property can be set on classes, ids or directly on the HTML element.

This example shows how text in the color #AB7F4D looks like.

```
.text, #text, p{  
    color:#AB7F4D  
}
```

If you want to add a text shadow in that color use the text-shadow property, you can generate a text shadow directly with our [CSS Text Shadow Generator](#).

Here you see how black text with a 4 pixel #AB7F4D colored shadow looks like.

```
.shadow{ text-shadow: 4px 4px 2px #AB7F4D
}
```

Border

The CSS property to change the border of an element to Hex AB7F4D is called "border". The border property can be set on classes, ids or directly on the HTML element.

This example shows the color as border, it can be applied via the CSS property "border" or "border-color".

```
.border, #border, table{ border:4px solid
#AB7F4D }
```

If only the border color should be changed use the property `border-color`.

```
.border{ border-color:#AB7F4D }
```

If you want to add a box shadow in that color use:

Here you see how a box with a 4 pixel #AB7F4D colored shadow looks like.

```
.boxshadow{ -moz-box-shadow:4px 4px 4px  
4px #AB7F4D; -webkit-box-shadow:4px 4px  
4px 4px #AB7F4D; box-shadow:4px 4px 4px  
4px #AB7F4D }
```

Background

The CSS property to change the background color of an element to Hex AB7F4D is called "background". The background property can be set on classes, ids or directly on the HTML element.

```
.background, #background, body{  
background:#AB7F4D }
```

If only the background color should be changed can be used:

```
.background{ background-color:#AB7F4D }
```

This example shows the color as background, it is applied via the CSS property "background".

To optimize and compress your CSS code, you can use our [online CSS compressor and optimizer](#) based on csstidy. If you want to create a linear or radial gradient as background or border, check our [CSS Gradient Generator](#).

Hey! You found this booklet interesting? Support Converting Colors with the new Membership Option!

The pro membership hides all ads, plus gives you double the colors in the color bucket, and more awesome pro features!

[Learn more, Memberships starting at \\$2.50/m!](#)

**Follow me
on Twitter!**

@ConvertingColor