

Converting Colors

Hex(AB8F90)

Have a look what the booklet for
Hex(AB8F90) contains.

Hex(AB8F90)	3
<i>Conversions</i>	4
<i>Details</i>	6
<i>Harmonies</i>	11
<i>Previews</i>	23
<i>Color Blindness Simulation</i>	26
<i>CSS Examples</i>	29

Color

Hex(AB8F90)

Conversions

Conversions Part 1

Format	Color
Hex	AB8F90
RGB	171, 143, 144
RGB Percent	67%, 56%, 56%
CMY	0.3294, 0.4392, 0.4353
CMYK	0.00, 0.16, 0.16, 0.33
HSL	358°, 14%, 62%
HSV	358°, 16%, 67%
XYZ	31.6511, 30.3165, 30.5690
YIQ	151.4860, 16.3670, 6.2470

Conversions

Conversions Part 2

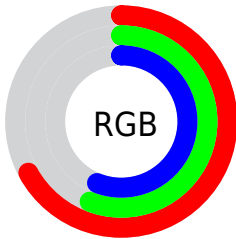
Format	Color
RYB	171, 143, 144
Decimal	11243408
CIELab	61.93, 10.68, 3.40
CIELCh	62, 11.204, 17.645
Yxy	30.3165, 0.3420, 0.3276
Android (android.graphics.Color)	4289433488 (0xFFAB8F90)
YUV	151.4860, -3.6906, 17.1138
Hunter-Lab	55.0604, 6.2538, 5.6250

Details

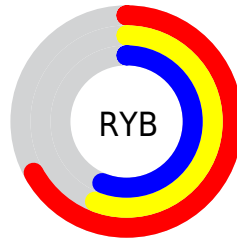
The Hex color **AB8F90** is a light color, and the websafe version is hex **CC9999**. A complement of this color would be **8FABAA**, and the grayscale version is **989898**.

A 20% lighter version of the original color is **E3C5C6**, and **765D5E** is the 20% darker color. If you saturate the color by 10%, you get **AB7E80**, and if you desaturate by 10%, it is **ABA0A0**.

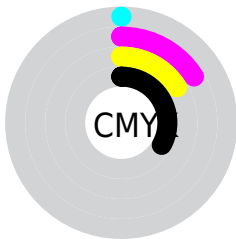
Distribution



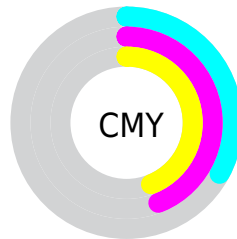
- Red (67%)
- Green (56%)
- Blue (56%)



- Red (67%)
- Yellow (56%)
- Blue (56%)



- Cyan (0%)
- Magenta (16%)
- Yellow (16%)
- Black (33%)



- Cyan (33%)
- Magenta (44%)
- Yellow (44%)

Brightness & Saturation Gradients

These gradients show how the Hex color AB8F90 changes by changing the brightness by 10 percent. The first figure shows a shift by +10% for each color and the second figure -10%.

Similar to the brightness gradients but the following saturation gradients show a change of the Hex color AB8F90 by changing the saturation by 10% instead.

 AB8F90

 AB8F90

FFFFFF

 907576

 E3C5C6

 765D5E

 FFE1E2

 5D4546

 FFFDFE

 452F30

 2F1A1B

 1C0000

 000000

 AB8F90

 AB8F90

 AB7E80

 ABA0A0

 AB6D6F

 ABB1B1

 AB5C5F

 ABC2C1

 AB4B4E

 ABD3D2

 AB393E

 ABE4E2

 AB282D

 ABF6F3

 AB171D

 ABFFFF

 AB060C

 AB0006

Harmonies

Analogous

The Analogous color harmony consists of three colors that are next to each other on the color wheel.



A78F9A



AB8F90



A99187

Triad

The Triadic color harmony groups three colors that are evenly spaced from another and form a triangle on the color wheel.



AB8F90



8C9A88



8698A9

Complementary

The Complementary color scheme is a pair of colors which are on the opposite of each other on the color wheel.



AB8F90



8FABAA

Split Complementary

Split-complementary colors differ from the complementary color scheme. The scheme consists of three colors, the original color and two neighbors of the complement color.



7E9AA4



AB8F90



829B91

Square

The Square scheme is like the rectangle color scheme, but the four colors are evenly spaced on the color wheel.



AB8F90



979783



7D9B9B



9294A8

Rectangle

The Rectangle color scheme consists of four colors that form a rectangle on the color wheel.



AB8F90



A59284



7D9B9B



8399A8

Sweetspot

The Sweet Spot groups the original color and five complimentary colors.



AB8F90



DED3D3



AA8FAB



70696A



F0F0F0



707070

Same Dimension

The Same Dimension uses a secret algorithm to generate beautiful new colors.



AB8F90



DEB1B3



AB9C8F



574E4E



960005



170001

Inverse Universe

The Inverse Universe completely reimagines the original color for something new.



AB8F90



DEB1B3



8F9EAB



574E4E



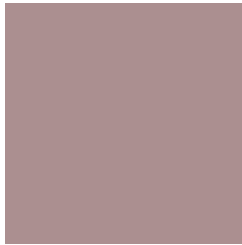
960005



170001

Previews

White Background



This preview shows how the Hex color AB8F90 looks on a white background.

Color Contrast Check

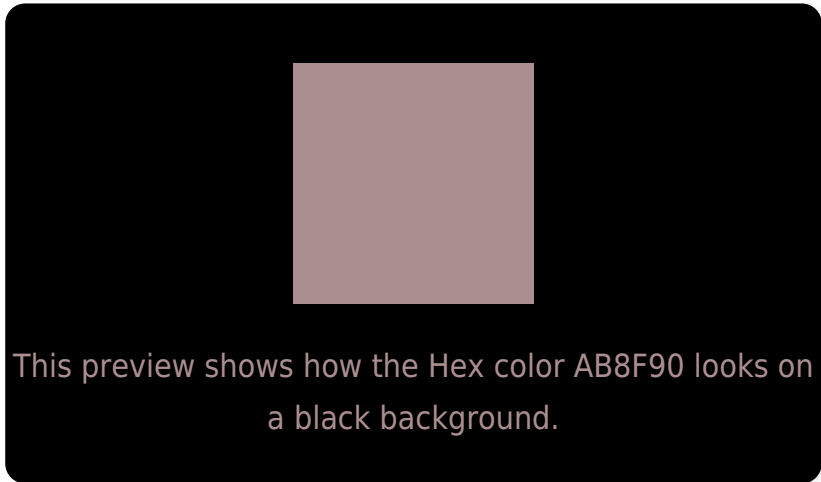
Large Text (above 18pt) WCAG AA × Fail

Any Text WCAG AA × Fail

Large Text (above 18pt) WCAG AAA × Fail

Any Text WCAG AAA × Fail

Black Background



Color Contrast Check

Large Text (above 18pt) WCAG AA ✓ Pass

Any Text WCAG AA ✓ Pass

Large Text (above 18pt) WCAG AAA ✓ Pass

Any Text WCAG AAA ✓ Pass

If you want to check with other color combinations, try the [Color Contrast Checker](#).

Hex AB8F90 Background



This preview shows how black text looks on a background with the Hex color AB8F90.

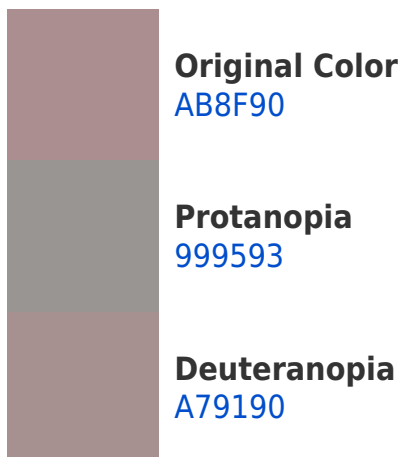



This preview shows how white text looks on a background with the Hex color AB8F90.

Color Blindness Simulation

Color vision deficiency is a very complex topic, and I could not describe the different causes any better than Wikipedia does, so if you want to learn more, you should check out their [article about color blindness](#).

Dichromacy





Tritanopia
AC8E99

Trichromacy



Original Color
AB8F90

Protanomaly
A09392

Deuteranomaly
A89090

Tritanomaly
AC8E96

Monochromacy



Original Color
AB8F90

Achromatopsia
979797

Achromatomaly
9E9494

CSS Examples

Text

The CSS property to change the color of the text to Hex AB8F90 is called "color". The color property can be set on classes, ids or directly on the HTML element.

This example shows how text in the color #AB8F90 looks like.

```
.text, #text, p{  
    color:#AB8F90  
}
```

If you want to add a text shadow in that color use the text-shadow property, you can generate a text shadow directly with our [CSS Text Shadow Generator](#).

Here you see how black text with a 4 pixel #AB8F90 colored shadow looks like.

```
.shadow{ text-shadow: 4px 4px 2px #AB8F90
}
```

Border

The CSS property to change the border of an element to Hex AB8F90 is called "border". The border property can be set on classes, ids or directly on the HTML element.

This example shows the color as border, it can be applied via the CSS property "border" or "border-color".

```
.border, #border, table{ border:4px solid
#AB8F90 }
```

If only the border color should be changed use the property `border-color`.

```
.border{ border-color:#AB8F90 }
```

If you want to add a box shadow in that color use:

Here you see how a box with a 4 pixel #AB8F90 colored shadow looks like.

```
.boxshadow{ -moz-box-shadow:4px 4px 4px  
4px #AB8F90; -webkit-box-shadow:4px 4px  
4px 4px #AB8F90; box-shadow:4px 4px 4px  
4px #AB8F90 }
```

Background

The CSS property to change the background color of an element to Hex AB8F90 is called "background". The background property can be set on classes, ids or directly on the HTML element.

```
.background, #background, body{  
background:#AB8F90 }
```

If only the background color should be changed can be used:

```
.background{ background-color:#AB8F90 }
```

This example shows the color as background, it is applied via the CSS property "background".

To optimize and compress your CSS code, you can use our [online CSS compressor and optimizer](#) based on csstidy. If you want to create a linear or radial gradient as background or border, check our [CSS Gradient Generator](#).

Hey! You found this booklet interesting? Support Converting Colors with the new Membership Option!

The pro membership hides all ads, plus gives you double the colors in the color bucket, and more awesome pro features!

[Learn more, Memberships starting at \\$2.50/m!](#)

**Follow me
on Twitter!**

@ConvertingColor