

# Converting Colors

Hex(AB939C)

Have a look what the booklet for  
Hex(AB939C) contains.

<b>Hex(AB939C)</b> .....	3
<i><b>Conversions</b></i> .....	4
<i><b>Details</b></i> .....	6
<i><b>Harmonies</b></i> .....	11
<i><b>Previews</b></i> .....	23
<i><b>Color Blindness Simulation</b></i> .....	26
<i><b>CSS Examples</b></i> .....	29

# **Color**

**Hex(AB939C)**

# Conversions

## Conversions Part 1

Format	Color
Hex	AB939C
RGB	171, 147, 156
RGB Percent	67%, 58%, 61%
CMY	0.3294, 0.4235, 0.3882
CMYK	0.00, 0.14, 0.09, 0.33
HSL	337°, 12%, 62%
HSV	337°, 14%, 67%
XYZ	33.2291, 31.9257, 35.8634
YIQ	155.2020, 11.4150, 7.8870

# Conversions

## Conversions Part 2

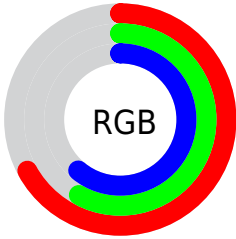
<b>Format</b>	<b>Color</b>
<b>RYB</b>	171, 147, 156
Decimal	11244444
CIELab	63.28, 10.50, -1.43
CIELCh	63, 10.599, 352.251
Yxy	31.9257, 0.3289, 0.3160
Android (android.graphics.Color)	4289434524 (0xFFAB939C)
YUV	155.2020, 0.3934, 13.8548
Hunter-Lab	56.5028, 6.0952, 1.9195

# Details

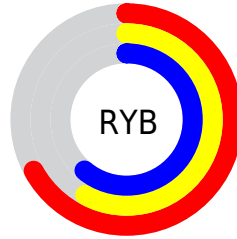
The Hex color **AB939C** is a light color, and the websafe version is hex **999999**. A complement of this color would be **93ABA2**, and the grayscale version is **9B9B9B**.

A 20% lighter version of the original color is **E2C9D2**, and **776069** is the 20% darker color. If you saturate the color by 10%, you get **AB8291**, and if you desaturate by 10%, it is **ABA4A7**.

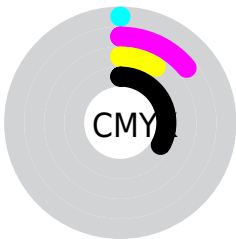
# Distribution



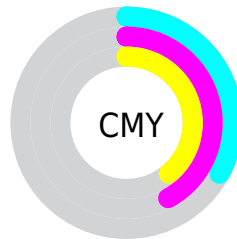
- Red (67%)
- Green (58%)
- Blue (61%)



- Red (67%)
- Yellow (58%)
- Blue (61%)



- Cyan (0%)
- Magenta (14%)
- Yellow (9%)
- Black (33%)



- Cyan (33%)
- Magenta (42%)
- Yellow (39%)

# Brightness & Saturation Gradients

These gradients show how the Hex color AB939C changes by changing the brightness by 10 percent. The first figure shows a shift by +10% for each color and the second figure -10%.

Similar to the brightness gradients but the following saturation gradients show a change of the Hex color AB939C by changing the saturation by 10% instead.



 AB939C

 AB939C

FFFFFF

 907982

 E2C9D2

 776069

 FFE5EF

 5E4951

 46323A

 2F1D24

 1C040F

 000000

 AB939C

 AB939C

 AB8291

 ABA4A7

 AB7187

 ABB5B1

 AB607C

 ABC6BC

 AB4F71

 ABD7C7

 AB3D67

 ABE8D1

 AB2C5C

 ABFADC

 AB1B51

 ABFFE7

 AB0A47

 ABFFF1

 AB0040

 ABFFFC

# Harmonies

## Analogous

The Analogous color harmony consists of three colors that are next to each other on the color wheel.



A395A5



AB939C



AE9392

# Triad

The Triadic color harmony groups three colors that are evenly spaced from another and form a triangle on the color wheel.



AB939C



999B88



849DA8

# Complementary

The Complementary color scheme is a pair of colors which are on the opposite of each other on the color wheel.



AB939C



93ABA2

# Split Complementary

Split-complementary colors differ from the complementary color scheme. The scheme consists of three colors, the original color and two neighbors of the complement color.



819FA0



AB939C



8E9D8D

# Square

The Square scheme is like the rectangle color scheme, but the four colors are evenly spaced on the color wheel.



AB939C



A39887



869F96



8C9BAC

# Rectangle

The Rectangle color scheme consists of four colors that form a rectangle on the color wheel.



AB939C



AC948D



869F96



829EA5



# Sweetspot

The Sweet Spot groups the original color and five complimentary colors.



AB939C



DED5D8



A293AB



706B6D



F0F0F0



707070



# Same Dimension

The Same Dimension uses a secret algorithm to generate beautiful new colors.



AB939C



DEB8C6



AB9693



574E51



960038



170009



# Inverse Universe

The Inverse Universe completely reimagines the original color for something new.



AB939C



DEB8C6



93A8AB



574E51



960038

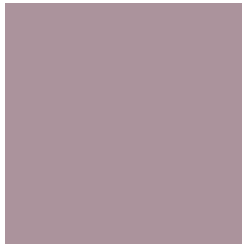


170009



# Previews

## White Background



This preview shows how the Hex color AB939C looks on a white background.

## Color Contrast Check

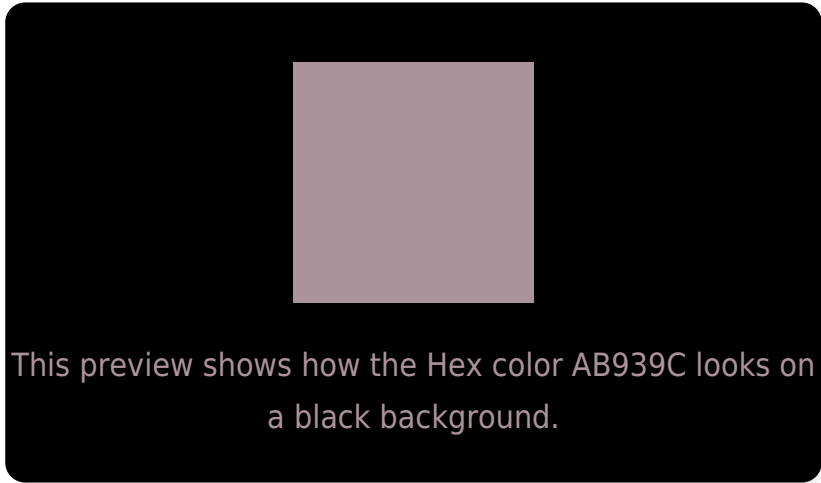
Large Text (above 18pt) WCAG AA × Fail

Any Text WCAG AA × Fail

Large Text (above 18pt) WCAG AAA × Fail

Any Text WCAG AAA × Fail

# Black Background



## Color Contrast Check

Large Text (above 18pt) WCAG AA ✓ Pass

Any Text WCAG AA ✓ Pass

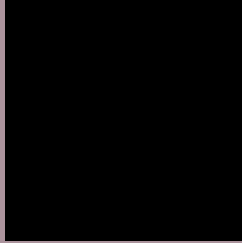
Large Text (above 18pt) WCAG AAA ✓ Pass

Any Text WCAG AAA ✓ Pass

If you want to check with other color combinations, try the [Color Contrast Checker](#).



## Hex AB939C Background



This preview shows how black text looks on a background with the Hex color AB939C.




This preview shows how white text looks on a background with the Hex color AB939C.

# Color Blindness Simulation

Color vision deficiency is a very complex topic, and I could not describe the different causes any better than Wikipedia does, so if you want to learn more, you should check out their [article about color blindness](#).

## Dichromacy





**Tritanopia**  
AB939E

# Trichromacy



**Original Color**  
AB939C

**Protanomaly**  
A0969E

**Deuteranomaly**  
A8949C

**Tritanomaly**  
AB939D

# Monochromacy



**Original Color**  
AB939C

**Achromatopsia**  
9B9B9B

**Achromatomaly**  
A1989B

# CSS Examples

## Text

The CSS property to change the color of the text to Hex AB939C is called "color". The color property can be set on classes, ids or directly on the HTML element.

This example shows how text in the color #AB939C looks like.

```
.text, #text, p{  
    color:#AB939C  
}
```

If you want to add a text shadow in that color use the text-shadow property, you can generate a text shadow directly with our [CSS Text Shadow Generator](#).

Here you see how black text with a 4 pixel #AB939C colored shadow looks like.

```
.shadow{ text-shadow: 4px 4px 2px #AB939C
}
```

## Border

The CSS property to change the border of an element to Hex AB939C is called "border". The border property can be set on classes, ids or directly on the HTML element.

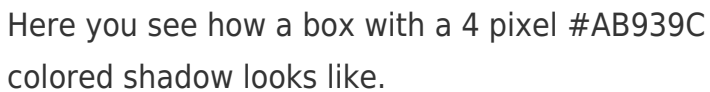
This example shows the color as border, it can be applied via the CSS property "border" or "border-color".

```
.border, #border, table{ border:4px solid
#AB939C }
```

If only the border color should be changed use the property `border-color`.

```
.border{ border-color:#AB939C }
```

If you want to add a box shadow in that color use:



Here you see how a box with a 4 pixel #AB939C colored shadow looks like.

```
.boxshadow{ -moz-box-shadow:4px 4px 4px  
4px #AB939C; -webkit-box-shadow:4px 4px  
4px 4px #AB939C; box-shadow:4px 4px 4px  
4px #AB939C }
```

# Background

The CSS property to change the background color of an element to Hex AB939C is called "background". The background property can be set on classes, ids or directly on the HTML element.

```
.background, #background, body{  
background:#AB939C }
```

If only the background color should be changed can be used:

```
.background{ background-color:#AB939C }
```

This example shows the color as background, it is applied via the CSS property "background".

To optimize and compress your CSS code, you can use our [online CSS compressor and optimizer](#) based on csstidy. If you want to create a linear or radial gradient as background or border, check our [CSS Gradient Generator](#).



Hey! You found this booklet interesting? Support Converting Colors with the new Membership Option!

The pro membership hides all ads, plus gives you double the colors in the color bucket, and more awesome pro features!

**[Learn more, Memberships starting at \\$2.50/m!](#)**

**Follow me  
on Twitter!**

@ConvertingColor