

# Converting Colors

Hex(ABA2B2)

Have a look what the booklet for  
Hex(ABA2B2) contains.

<b>Hex(ABA2B2)</b> .....	3
<i><b>Conversions</b></i> .....	4
<i><b>Details</b></i> .....	6
<i><b>Harmonies</b></i> .....	11
<i><b>Previews</b></i> .....	23
<i><b>Color Blindness Simulation</b></i> .....	26
<i><b>CSS Examples</b></i> .....	29

# **Color**

**Hex(ABA2B2)**

# Conversions

## Conversions Part 1

Format	Color
Hex	ABA2B2
RGB	171, 162, 178
RGB Percent	67%, 64%, 70%
CMY	0.3294, 0.3647, 0.3020
CMYK	0.04, 0.09, 0.00, 0.30
HSL	274°, 9%, 67%
HSV	274°, 9%, 70%
XYZ	37.7508, 37.7129, 47.4091
YIQ	166.5150, 0.2280, 6.8840

# Conversions

## Conversions Part 2

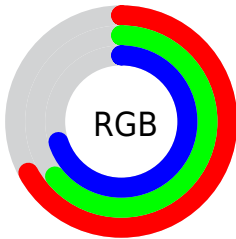
<b>Format</b>	<b>Color</b>
<b>RYB</b>	171, 162, 178
Decimal	11248306
CIELab	67.81, 6.29, -7.09
CIELCh	68, 9.479, 311.586
Yxy	37.7129, 0.3072, 0.3069
Android (android.graphics.Color)	4289438386 (0xFFABA2B2)
YUV	166.5150, 5.6621, 3.9333
Hunter-Lab	61.4109, 2.2594, -2.7842

# Details

The Hex color **ABA2B2** is a light color, and the websafe version is hex **999999**. A complement of this color would be **A9B2A2**, and the grayscale version is **A6A6A6**.

A 20% lighter version of the original color is **E2D9EA**, and **776E7D** is the 20% darker color. If you saturate the color by 10%, you get **A390B2**, and if you desaturate by 10%, it is **B3B4B2**.

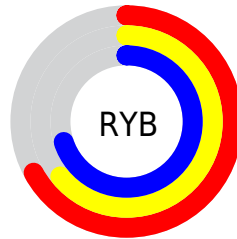
# Distribution



Red (67%)

Green (64%)

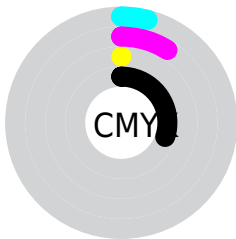
Blue (70%)



Red (67%)

Yellow (64%)

Blue (70%)

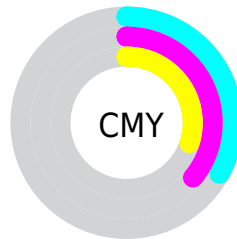


Cyan (4%)

Magenta (9%)

Yellow (0%)

Black (30%)



Cyan (33%)

Magenta (36%)

Yellow (30%)

# Brightness & Saturation Gradients

These gradients show how the Hex color ABA2B2 changes by changing the brightness by 10 percent. The first figure shows a shift by +10% for each color and the second figure -10%.

Similar to the brightness gradients but the following saturation gradients show a change of the Hex color ABA2B2 by changing the saturation by 10% instead.





ABA2B2



ABA2B2

FFFFFF



908897



E2D9EA



776E7D



FFF5FF



5E5664



463F4D



302936



1B1521



000008



000000



ABA2B2



ABA2B2

 A390B2

 B3B4B2

 9B7EB2

 BBC6B2

 946DB2

 C2D7B2

 8C5BB2

 CAE9B2

 8449B2

 D2FBB2

 7C37B2

 DAFFB2

 7425B2

 E2FFB2

 6D14B2

 E9FFB2

 6502B2

 F1FFB2

# Harmonies

## Analogous

The Analogous color harmony consists of three colors that are next to each other on the color wheel.



A0A5B6



ABA2B2



B3A0AB

# Triad

The Triadic color harmony groups three colors that are evenly spaced from another and form a triangle on the color wheel.



ABA2B2



B1A395



91AAA8

# Complementary

The Complementary color scheme is a pair of colors which are on the opposite of each other on the color wheel.



ABA2B2



A9B2A2

# Split Complementary

Split-complementary colors differ from the complementary color scheme. The scheme consists of three colors, the original color and two neighbors of the complement color.



96AAA0



ABA2B2



A9A694

# Square

The Square scheme is like the rectangle color scheme, but the four colors are evenly spaced on the color wheel.



ABA2B2



B7A19A



9FA898



91AAB0

# Rectangle

The Rectangle color scheme consists of four colors that form a rectangle on the color wheel.



ABA2B2



B79FA5



9FA898



92AAA5



# Sweetspot

The Sweet Spot groups the original color and five complimentary colors.



ABA2B2



E5E1E8



A2A9B2



737175



F5F5F5



757575



# Same Dimension

The Same Dimension uses a secret algorithm to generate beautiful new colors.



ABA2B2



DDCFE8



B2A2B1



555059



560099



0E001A



# Inverse Universe

The Inverse Universe completely reimagines the original color for something new.



B2A2A9



E8CFDA



A2B2A3



595054



990043

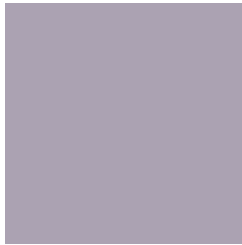


1A000B



# Previews

## White Background



This preview shows how the Hex color ABA2B2 looks on a white background.

## Color Contrast Check

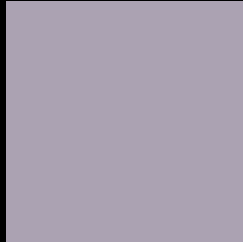
Large Text (above 18pt) WCAG AA × Fail

Any Text WCAG AA × Fail

Large Text (above 18pt) WCAG AAA × Fail

Any Text WCAG AAA × Fail

# Black Background



This preview shows how the Hex color ABA2B2 looks on a black background.

## Color Contrast Check

Large Text (above 18pt) WCAG AA ✓ Pass

Any Text WCAG AA ✓ Pass

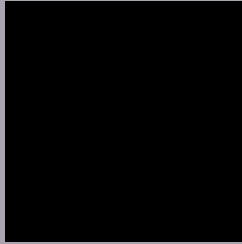
Large Text (above 18pt) WCAG AAA ✓ Pass

Any Text WCAG AAA ✓ Pass

If you want to check with other color combinations, try the [Color Contrast Checker](#).



## Hex ABA2B2 Background



This preview shows how black text looks on a background with the Hex color ABA2B2.



This preview shows how white text looks on a background with the Hex color ABA2B2.

# Color Blindness Simulation

Color vision deficiency is a very complex topic, and I could not describe the different causes any better than Wikipedia does, so if you want to learn more, you should check out their [article about color blindness](#).

## Dichromacy



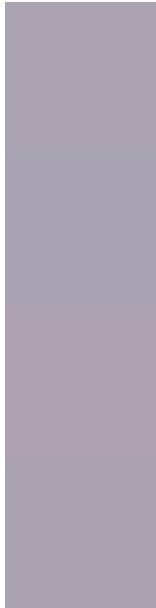
**Original Color**  
ABA2B2

**Protanopia**  
A4A4B3

**Deuteranopia**  
AFA1B2



# Trichromacy



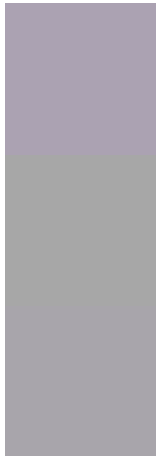
**Original Color**  
ABA2B2

**Protanomaly**  
A7A3B3

**Deuteranomaly**  
AEA1B2

**Tritanomaly**  
ABA2B0

# Monochromacy



**Original Color**  
ABA2B2

**Achromatopsia**  
A7A7A7

**Achromatomaly**  
A8A5AB

# CSS Examples

## Text

The CSS property to change the color of the text to Hex ABA2B2 is called "color". The color property can be set on classes, ids or directly on the HTML element.

This example shows how text in the color #ABA2B2 looks like.

```
.text, #text, p{  
    color:#ABA2B2  
}
```

If you want to add a text shadow in that color use the text-shadow property, you can generate a text shadow directly with our [CSS Text Shadow Generator](#).

Here you see how black text with a 4 pixel #ABA2B2 colored shadow looks like.

```
.shadow{ text-shadow: 4px 4px 2px #ABA2B2
}
```

## Border

The CSS property to change the border of an element to Hex ABA2B2 is called "border". The border property can be set on classes, ids or directly on the HTML element.

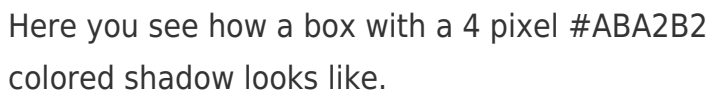
This example shows the color as border, it can be applied via the CSS property "border" or "border-color".

```
.border, #border, table{ border:4px solid
#ABA2B2 }
```

If only the border color should be changed use the property `border-color`.

```
.border{ border-color:#ABA2B2 }
```

If you want to add a box shadow in that color use:



Here you see how a box with a 4 pixel #ABA2B2 colored shadow looks like.

```
.boxshadow{ -moz-box-shadow:4px 4px 4px  
4px #ABA2B2; -webkit-box-shadow:4px 4px  
4px 4px #ABA2B2; box-shadow:4px 4px 4px  
4px #ABA2B2 }
```

# Background

The CSS property to change the background color of an element to Hex ABA2B2 is called "background". The background property can be set on classes, ids or directly on the HTML element.

```
.background, #background, body{  
background:#ABA2B2 }
```

If only the background color should be changed can be used:

```
.background{ background-color:#ABA2B2 }
```

This example shows the color as background, it is applied via the CSS property "background".

To optimize and compress your CSS code, you can use our [online CSS compressor and optimizer](#) based on csstidy. If you want to create a linear or radial gradient as background or border, check our [CSS Gradient Generator](#).



Hey! You found this booklet interesting? Support Converting Colors with the new Membership Option!

The pro membership hides all ads, plus gives you double the colors in the color bucket, and more awesome pro features!

**[Learn more, Memberships starting at \\$2.50/m!](#)**

**Follow me  
on Twitter!**

@ConvertingColor