

# Converting Colors

Hex(AC4853)

Have a look what the booklet for  
Hex(AC4853) contains.

<b>Hex(AC4853)</b> .....	3
<b><i>Conversions</i></b> .....	4
<b><i>Details</i></b> .....	6
<b><i>Harmonies</i></b> .....	11
<b><i>Previews</i></b> .....	23
<b><i>Color Blindness Simulation</i></b> .....	26
<b><i>CSS Examples</i></b> .....	29

# Color

**Hex(AC4853)**

# Conversions

## Conversions Part 1

<b>Format</b>	<b>Color</b>
Hex	AC4853
RGB	172, 72, 83
RGB Percent	67%, 28%, 33%
CMY	0.3255, 0.7176, 0.6745
CMYK	0.00, 0.58, 0.52, 0.33
HSL	353°, 41%, 48%
HSV	353°, 58%, 67%
XYZ	20.8920, 14.0299, 9.7905
YIQ	103.1540, 56.0690, 24.6210

# Conversions

## Conversions Part 2

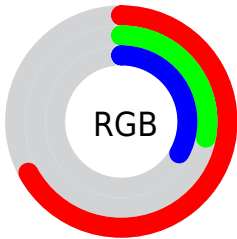
<b>Format</b>	<b>Color</b>
<b>R<sub>YB</sub></b>	172, 72, 83
Decimal	11290707
CIE Lab	44.28, 41.94, 14.32
CIE LCh	44, 44.321, 18.855
Yxy	14.0299, 0.4673, 0.3138
Android (android.graphics.Color)	4289480787 (0xFFAC4853)
YUV	103.1540, -9.9359, 60.3779
Hunter-Lab	37.4565, 34.0122, 10.7221

# Details

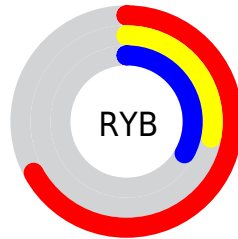
The Hex color **AC4853** is a dark color, and the websafe version is hex **993333**. A complement of this color would be **48ACA1**, and the grayscale version is **676767**.

A 20% lighter version of the original color is **E77C84**, and **731126** is the 20% darker color. If you saturate the color by 10%, you get **AC3744**, and if you desaturate by 10%, it is **AC5962**.

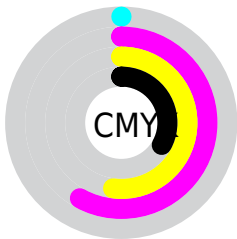
# Distribution



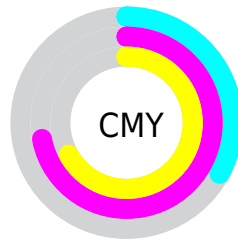
- Red (67%)
- Green (28%)
- Blue (33%)



- Red (67%)
- Yellow (28%)
- Blue (33%)



- Cyan (0%)
- Magenta (58%)
- Yellow (52%)
- Black (33%)



- Cyan (33%)
- Magenta (72%)
- Yellow (67%)

# Brightness & Saturation Gradients

These gradients show how the Hex color AC4853 changes by changing the brightness by 10 percent. The first figure shows a shift by +10% for each color and the second figure -10%.

Similar to the brightness gradients but the following saturation gradients show a change of the Hex color AC4853 by changing the saturation by 10% instead.



 AC4853

 AC4853

FFFFFF

 8F2E3C

 E77C84

 731126

 FF979E

 570012

 FFB3B9

 3D0000

 FFCFD5

 1F0001

 FFECF1

 000000

 AC4853

 AC4853

 AC3744

 AC5962

 AC2634

 AC6A72

 AC1425

 AC7C81

 AC0316

 AC8D90

 AC0013

 AC9EA0

 ACAFAF

 ACC0BE

 ACD2CD

 ACE3DD

# Harmonies

## Analogous

The Analogous color harmony consists of three colors that are next to each other on the color wheel.



A54878



AC4853



A15332

# Triad

The Triadic color harmony groups three colors that are evenly spaced from another and form a triangle on the color wheel.



AC4853



3A7636



0071B1

# Complementary

The Complementary color scheme is a pair of colors which are on the opposite of each other on the color wheel.



AC4853



48ACA1

# Split Complementary

Split-complementary colors differ from the complementary color scheme. The scheme consists of three colors, the original color and two neighbors of the complement color.



00789F



AC4853



007A59

# Square

The Square scheme is like the rectangle color scheme, but the four colors are evenly spaced on the color wheel.



AC4853



666E1C



007A7F



5165AF

# Rectangle

The Rectangle color scheme consists of four colors that form a rectangle on the color wheel.



AC4853



915D21



007A7F



0074AD



# Sweetspot

The Sweet Spot groups the original color and five complimentary colors.



AC4853



E0BABE



A048AC



705A5C



F0F0F0



707070



# Same Dimension

The Same Dimension uses a secret algorithm to generate beautiful new colors.



AC4853



E04355



AC6E48



574E4F



960011



170003



# Inverse Universe

The Inverse Universe completely reimagines the original color for something new.



AC4853



E04355



4886AC



574E4F



960011

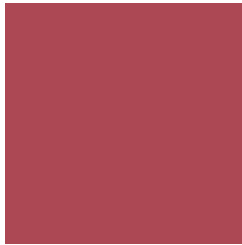


170003



# Previews

## White Background



This preview shows how the Hex color AC4853 looks on a white background.

## Color Contrast Check

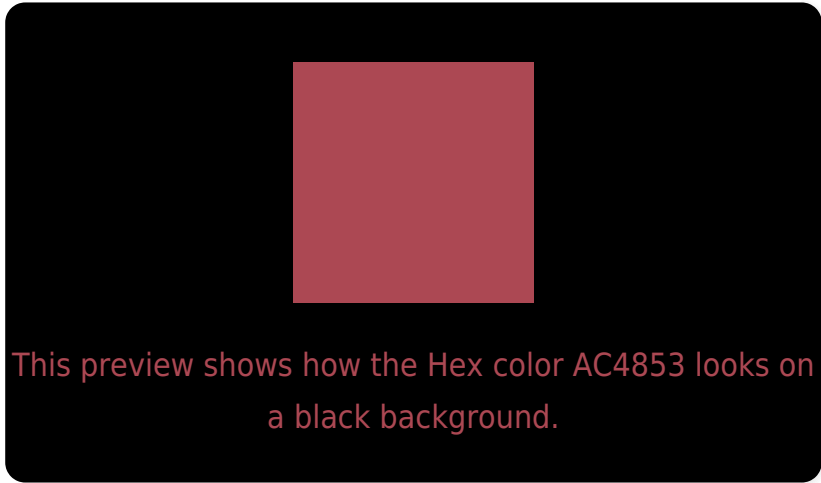
Large Text (above 18pt) WCAG AA ✓ Pass

Any Text WCAG AA ✓ Pass

Large Text (above 18pt) WCAG AAA ✓ Pass

Any Text WCAG AAA × Fail

# Black Background



## Color Contrast Check

Large Text (above 18pt) WCAG AA ✓ Pass

Any Text WCAG AA × Fail

Large Text (above 18pt) WCAG AAA × Fail

Any Text WCAG AAA × Fail

If you want to check with other color combinations, try the [Color Contrast Checker](#).



## Hex AC4853 Background



This preview shows how black text looks on a background with the Hex color AC4853.

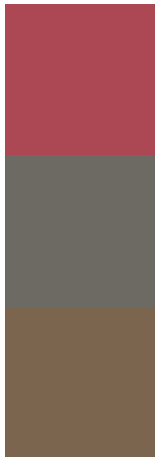


This preview shows how white text looks on a background with the Hex color AC4853.

# Color Blindness Simulation

Color vision deficiency is a very complex topic, and I could not describe the different causes any better than Wikipedia does, so if you want to learn more, you should check out their [article about color blindness](#).

## Dichromacy



**Original Color**  
AC4853

**Protanopia**  
6D6963

**Deuteranopia**  
7C654E



# Trichromacy



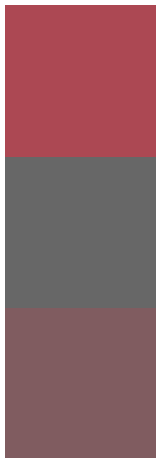
**Original Color**  
AC4853

**Protanomaly**  
845D5D

**Deuteranomaly**  
8D5A50

**Tritanomaly**  
AC4950

# Monochromacy



**Original Color**  
AC4853

**Achromatopsia**  
676767

**Achromatomaly**  
805C60

# CSS Examples

## Text

The CSS property to change the color of the text to Hex AC4853 is called "color". The color property can be set on classes, ids or directly on the HTML element.

This example shows how text in the color #AC4853 looks like.

```
.text, #text, p{  
    color:#AC4853  
}
```

If you want to add a text shadow in that color use the text-shadow property, you can generate a text shadow directly with our [CSS Text Shadow Generator](#).

Here you see how black text with a 4 pixel #AC4853 colored shadow looks like.

```
.shadow{ text-shadow: 4px 4px 2px #AC4853
}
```

## Border

The CSS property to change the border of an element to Hex AC4853 is called "border". The border property can be set on classes, ids or directly on the HTML element.

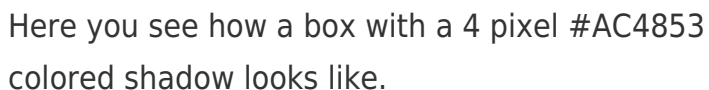
This example shows the color as border, it can be applied via the CSS property "border" or "border-color".

```
.border, #border, table{ border:4px solid
#AC4853 }
```

If only the border color should be changed use the property `border-color`.

```
.border{ border-color:#AC4853 }
```

If you want to add a box shadow in that color use:



Here you see how a box with a 4 pixel `#AC4853` colored shadow looks like.

```
.boxshadow{ -moz-box-shadow:4px 4px 4px  
4px #AC4853; -webkit-box-shadow:4px 4px  
4px 4px #AC4853; box-shadow:4px 4px 4px  
4px #AC4853 }
```

# Background

The CSS property to change the background color of an element to Hex AC4853 is called "background". The background property can be set on classes, ids or directly on the HTML element.

```
.background, #background, body{  
background:#AC4853 }
```

If only the background color should be changed can be used:

```
.background{ background-color:#AC4853 }
```

This example shows the color as background, it is applied via the CSS property "background".

To optimize and compress your CSS code, you can use our [online CSS compressor and optimizer](#) based on csstidy. If you want to create a linear or radial gradient as background or border, check our [CSS Gradient Generator](#).



Hey! You found this booklet  
interesting? Support Converting  
Colors with the new Membership  
Option!

The pro membership hides all ads, plus gives you  
double the colors in the color bucket, and more  
awesome pro features!

**[Learn more, Memberships starting at \\$2.50/m!](#)**

**Follow me  
on Twitter!**

@ConvertingColor