

Converting Colors

Hex(AC6844)

Have a look what the booklet for
Hex(AC6844) contains.

Hex(AC6844)	3
<i>Conversions</i>	4
<i>Details</i>	6
<i>Harmonies</i>	11
<i>Previews</i>	23
<i>Color Blindness Simulation</i>	26
<i>CSS Examples</i>	29

Color

Hex(AC6844)

Conversions

Conversions Part 1

Format	Color
Hex	AC6844
RGB	172, 104, 68
RGB Percent	67%, 41%, 27%
CMY	0.3255, 0.5922, 0.7333
CMYK	0.00, 0.40, 0.60, 0.33
HSL	21°, 43%, 47%
HSV	21°, 60%, 67%
XYZ	23.0070, 19.0886, 7.9407
YIQ	120.2280, 52.0840, 3.2200

Conversions

Conversions Part 2

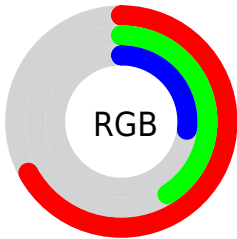
Format	Color
R_{YB}	172, 123, 68
Decimal	11298884
CIE Lab	50.79, 23.72, 31.60
CIE LCh	51, 39.508, 53.106
Yxy	19.0886, 0.4598, 0.3815
Android (android.graphics.Color)	4289488964 (0xFFAC6844)
YUV	120.2280, -25.7484, 45.4040
Hunter-Lab	43.6905, 17.5377, 19.8075

Details

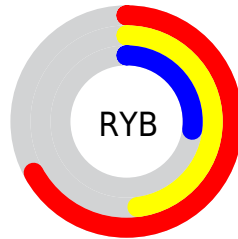
The Hex color **AC6844** is a dark color, and the websafe version is hex **996633**. A complement of this color would be **4488AC**, and the grayscale version is **787878**.

A 20% lighter version of the original color is **E79C75**, and **743817** is the 20% darker color. If you saturate the color by 10%, you get **AC5D33**, and if you desaturate by 10%, it is **AC7355**.

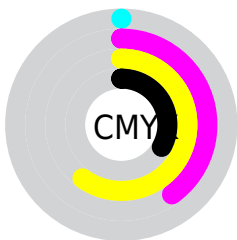
Distribution



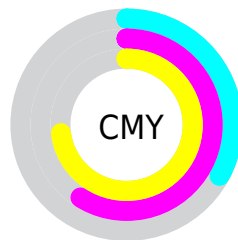
- Red (67%)
- Green (41%)
- Blue (27%)



- Red (67%)
- Yellow (48%)
- Blue (27%)



- Cyan (0%)
- Magenta (40%)
- Yellow (60%)
- Black (33%)



- Cyan (33%)
- Magenta (59%)
- Yellow (73%)

Brightness & Saturation Gradients

These gradients show how the Hex color AC6844 changes by changing the brightness by 10 percent. The first figure shows a shift by +10% for each color and the second figure -10%.

Similar to the brightness gradients but the following saturation gradients show a change of the Hex color AC6844 by changing the saturation by 10% instead.

 AC6844

 AC6844

FFFFFF

 904F2D

 E79C75

 743817

 FF78F

 592100

 FFD3A9

 3E0B00

 FFEFC5

 270001

 FFFFE1

 000000

FFFFFFE

 AC6844

 AC6844

 AC5D33

 AC7355

 AC5222

 AC7E66

 AC4610

 AC8A78

 AC3C00

 AC9589

 ACA09A

 ACABAB

 ACB7BC

 ACC2CE

 ACCDDF

Harmonies

Analogous

The Analogous color harmony consists of three colors that are next to each other on the color wheel.



B85E60



AC6844



947434

Triad

The Triadic color harmony groups three colors that are evenly spaced from another and form a triangle on the color wheel.



AC6844



008A70



6F73B7

Complementary

The Complementary color scheme is a pair of colors which are on the opposite of each other on the color wheel.



AC6844



4488AC

Split Complementary

Split-complementary colors differ from the complementary color scheme. The scheme consists of three colors, the original color and two neighbors of the complement color.



227FBC



AC6844



008A92

Square

The Square scheme is like the rectangle color scheme, but the four colors are evenly spaced on the color wheel.



AC6844



4B864F



0086AE



9B66A2

Rectangle

The Rectangle color scheme consists of four colors that form a rectangle on the color wheel.



AC6844



7F7C35



0086AE



5B77BA

Sweetspot

The Sweet Spot groups the original color and five complimentary colors.



AC6844



E0C6B8



AC4489



706058



F0F0F0



707070

Same Dimension

The Same Dimension uses a secret algorithm to generate beautiful new colors.



AC6844



E0753D



AC9B44



57514E



963400



170800

Inverse Universe

The Inverse Universe completely reimagines the original color for something new.



4488AC



3DA8E0



4455AC



4E5457



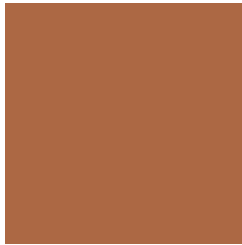
006296



000F17

Previews

White Background



This preview shows how the Hex color AC6844 looks on a white background.

Color Contrast Check

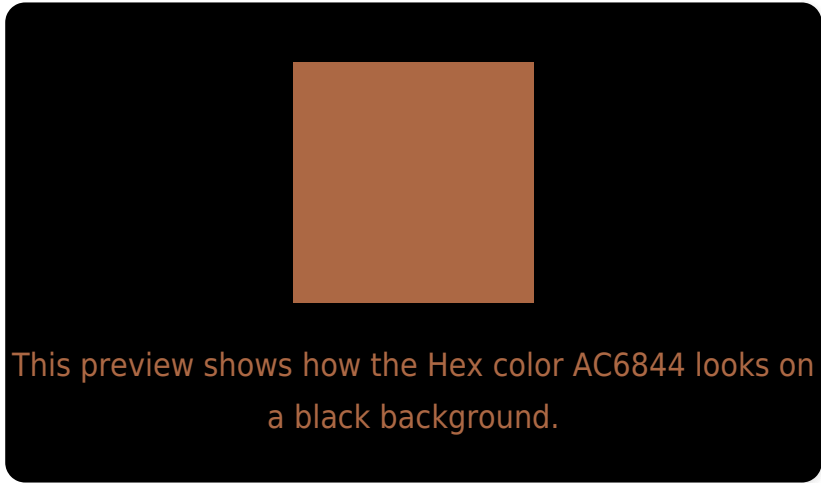
Large Text (above 18pt) WCAG AA ✓ Pass

Any Text WCAG AA ✗ Fail

Large Text (above 18pt) WCAG AAA ✗ Fail

Any Text WCAG AAA ✗ Fail

Black Background



Color Contrast Check

Large Text (above 18pt) WCAG AA ✓ Pass

Any Text WCAG AA ✓ Pass

Large Text (above 18pt) WCAG AAA ✓ Pass

Any Text WCAG AAA × Fail

If you want to check with other color combinations, try the [Color Contrast Checker](#).

Hex AC6844 Background



This preview shows how black text looks on a background with the Hex color AC6844.




This preview shows how white text looks on a background with the Hex color AC6844.

Color Blindness Simulation

Color vision deficiency is a very complex topic, and I could not describe the different causes any better than Wikipedia does, so if you want to learn more, you should check out their [article about color blindness](#).

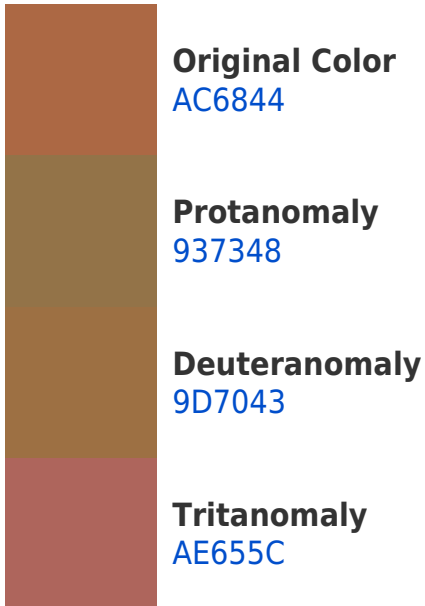
Dichromacy



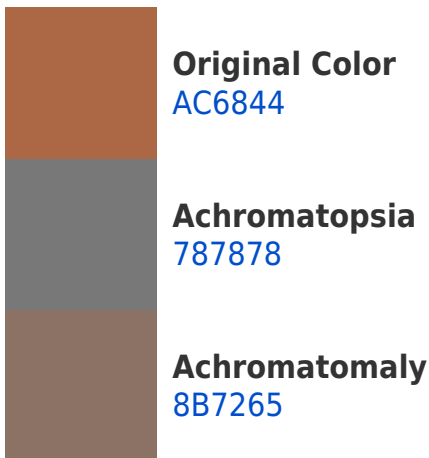


Tritanopia
AF636A

Trichromacy



Monochromacy



CSS Examples

Text

The CSS property to change the color of the text to Hex AC6844 is called "color". The color property can be set on classes, ids or directly on the HTML element.

This example shows how text in the color #AC6844 looks like.

```
.text, #text, p{  
    color:#AC6844  
}
```

If you want to add a text shadow in that color use the text-shadow property, you can generate a text shadow directly with our [CSS Text Shadow Generator](#).

Here you see how black text with a 4 pixel #AC6844 colored shadow looks like.

```
.shadow{ text-shadow: 4px 4px 2px #AC6844  
}
```

Border

The CSS property to change the border of an element to Hex AC6844 is called "border". The border property can be set on classes, ids or directly on the HTML element.

This example shows the color as border, it can be applied via the CSS property "border" or "border-color".

```
.border, #border, table{ border:4px solid  
#AC6844 }
```

If only the border color should be changed use the property `border-color`.

```
.border{ border-color:#AC6844 }
```

If you want to add a box shadow in that color use:

Here you see how a box with a 4 pixel #AC6844 colored shadow looks like.

```
.boxshadow{ -moz-box-shadow:4px 4px 4px  
4px #AC6844; -webkit-box-shadow:4px 4px  
4px 4px #AC6844; box-shadow:4px 4px 4px  
4px #AC6844 }
```

Background

The CSS property to change the background color of an element to Hex AC6844 is called "background". The background property can be set on classes, ids or directly on the HTML element.

```
.background, #background, body{  
background:#AC6844 }
```

If only the background color should be changed can be used:

```
.background{ background-color:#AC6844 }
```

This example shows the color as background, it is applied via the CSS property "background".

To optimize and compress your CSS code, you can use our [online CSS compressor and optimizer](#) based on csstidy. If you want to create a linear or radial gradient as background or border, check our [CSS Gradient Generator](#).

Hey! You found this booklet interesting? Support Converting Colors with the new Membership Option!

The pro membership hides all ads, plus gives you double the colors in the color bucket, and more awesome pro features!

[Learn more, Memberships starting at \\$2.50/m!](#)

**Follow me
on Twitter!**

@ConvertingColor