

# Converting Colors

Hex(AC6F6D)

Have a look what the booklet for  
Hex(AC6F6D) contains.

<b>Hex(AC6F6D)</b> .....	3
<b><i>Conversions</i></b> .....	4
<b><i>Details</i></b> .....	6
<b><i>Harmonies</i></b> .....	11
<b><i>Previews</i></b> .....	23
<b><i>Color Blindness Simulation</i></b> .....	26
<b><i>CSS Examples</i></b> .....	29

# Color

**Hex(AC6F6D)**

# Conversions

## Conversions Part 1

<b>Format</b>	<b>Color</b>
Hex	AC6F6D
RGB	172, 111, 109
RGB Percent	67%, 44%, 43%
CMY	0.3255, 0.5647, 0.5725
CMYK	0.00, 0.35, 0.37, 0.33
HSL	2°, 28%, 55%
HSV	2°, 37%, 67%
XYZ	25.4580, 21.2437, 17.2267
YIQ	129.0110, 36.9980, 12.3100

# Conversions

## Conversions Part 2

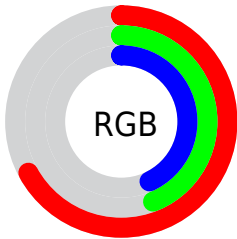
Format	Color
R <sub>Y</sub> B	172, 111, 109
Decimal	11300717
CIE Lab	53.22, 23.96, 11.17
CIE LCh	53, 26.436, 24.984
Yxy	21.2437, 0.3982, 0.3323
Android (android.graphics.Color)	4289490797 (0xFFAC6F6D)
YUV	129.0110, -9.8654, 37.7014
Hunter-Lab	46.0908, 17.9345, 10.1037

# Details

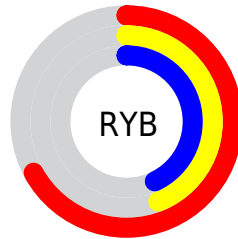
The Hex color **AC6F6D** is a dark color, and the websafe version is hex **996666**. A complement of this color would be **6DAAAC**, and the grayscale version is **818181**.

A 20% lighter version of the original color is **E5A3A0**, and **763E3E** is the 20% darker color. If you saturate the color by 10%, you get **AC5E5C**, and if you desaturate by 10%, it is **AC807E**.

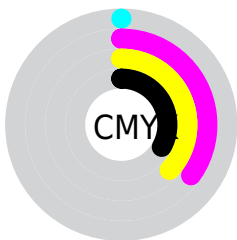
# Distribution



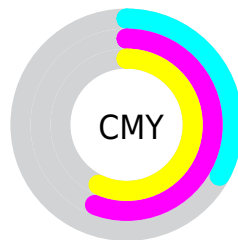
- Red (67%)
- Green (44%)
- Blue (43%)



- Red (67%)
- Yellow (44%)
- Blue (43%)



- Cyan (0%)
- Magenta (35%)
- Yellow (37%)
- Black (33%)



- Cyan (33%)
- Magenta (56%)
- Yellow (57%)

# Brightness & Saturation Gradients

These gradients show how the Hex color AC6F6D changes by changing the brightness by 10 percent. The first figure shows a shift by +10% for each color and the second figure -10%.

Similar to the brightness gradients but the following saturation gradients show a change of the Hex color AC6F6D by changing the saturation by 10% instead.



 AC6F6D

 AC6F6D

FFFFFF

 905655

 E5A3A0

 763E3E

 FFBFBB

 5B2728

 FFDBD7

 421114

 FFF7F4

 2B0000

 000000

 AC6F6D

 AC6F6D

 AC5E5C

 AC807E

 AC4E4B

 AC908F

 AC3D39

 ACA1A1

 AC2C28

 ACB2B2

 AC1C17

 ACC2C3

 AC0B06

 ACD3D4

 AC0500

 ACE4E5

 ACF4F7

 ACFFFF

# Harmonies

## Analogous

The Analogous color harmony consists of three colors that are next to each other on the color wheel.



A96E84



AC6F6D



A4755B

# Triad

The Triadic color harmony groups three colors that are evenly spaced from another and form a triangle on the color wheel.



AC6F6D



618964



5A82AC

# Complementary

The Complementary color scheme is a pair of colors which are on the opposite of each other on the color wheel.



AC6F6D



6DAAAC

# Split Complementary

Split-complementary colors differ from the complementary color scheme. The scheme consists of three colors, the original color and two neighbors of the complement color.



3A88A4



AC6F6D



468B7A

# Square

The Square scheme is like the rectangle color scheme, but the four colors are evenly spaced on the color wheel.



AC6F6D



7B8455



328B91



7D7BA8

# Rectangle

The Rectangle color scheme consists of four colors that form a rectangle on the color wheel.



AC6F6D



997A53



328B91



4F85AA



# Sweetspot

The Sweet Spot groups the original color and five complimentary colors.



AC6F6D



E0C8C8



AC6DAB



706262



F0F0F0



707070



# Same Dimension

The Same Dimension uses a secret algorithm to generate beautiful new colors.



AC6F6D



E0817E



AC8E6D



574E4E



960500



170100



# Inverse Universe

The Inverse Universe completely reimagines the original color for something new.



6DAAAC



7EDDE0



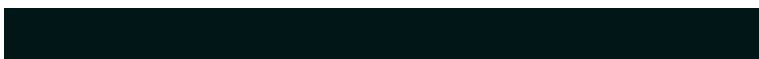
6D8BAC



4E5657



009296

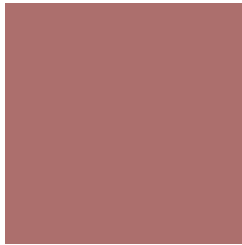


001617



# Previews

## White Background



This preview shows how the Hex color AC6F6D looks on a white background.

## Color Contrast Check

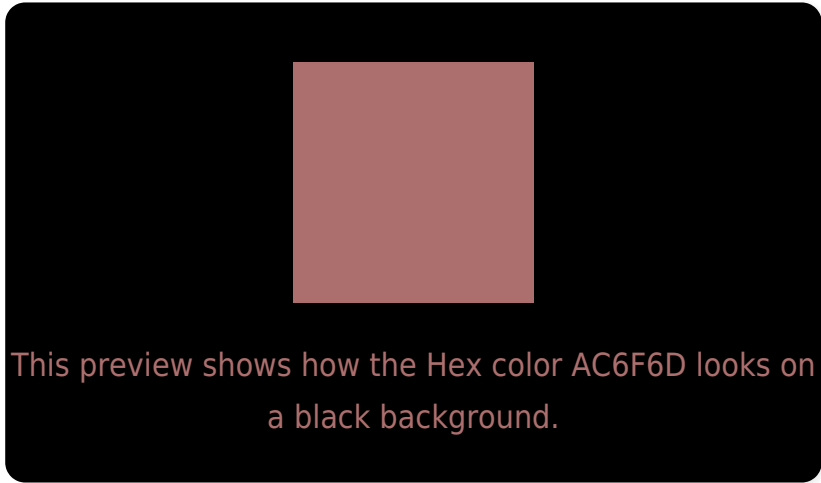
Large Text (above 18pt) WCAG AA ✓ Pass

Any Text WCAG AA ✗ Fail

Large Text (above 18pt) WCAG AAA ✗ Fail

Any Text WCAG AAA ✗ Fail

# Black Background



## Color Contrast Check

Large Text (above 18pt) WCAG AA ✓ Pass

Any Text WCAG AA ✓ Pass

Large Text (above 18pt) WCAG AAA ✓ Pass

Any Text WCAG AAA × Fail

If you want to check with other color combinations, try the [Color Contrast Checker](#).



## Hex AC6F6D Background



This preview shows how black text looks on a background with the Hex color AC6F6D.

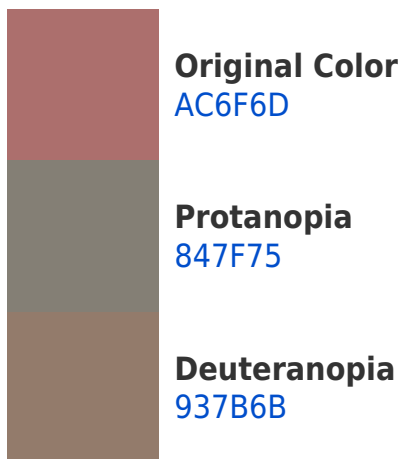


This preview shows how white text looks on a background with the Hex color AC6F6D.

# Color Blindness Simulation

Color vision deficiency is a very complex topic, and I could not describe the different causes any better than Wikipedia does, so if you want to learn more, you should check out their [article about color blindness](#).

## Dichromacy





**Tritanopia**  
AD6E76

# Trichromacy



**Original Color**  
AC6F6D

**Protanomaly**  
937972

**Deuteranomaly**  
9C776C

**Tritanomaly**  
AD6E73

# Monochromacy



**Original Color**  
AC6F6D

**Achromatopsia**  
818181

**Achromatomaly**  
917A7A

# CSS Examples

## Text

The CSS property to change the color of the text to Hex AC6F6D is called "color". The color property can be set on classes, ids or directly on the HTML element.

This example shows how text in the color #AC6F6D looks like.

```
.text, #text, p{  
    color:#AC6F6D  
}
```

If you want to add a text shadow in that color use the text-shadow property, you can generate a text shadow directly with our [CSS Text Shadow Generator](#).

Here you see how black text with a 4 pixel #AC6F6D colored shadow looks like.

```
.shadow{ text-shadow: 4px 4px 2px #AC6F6D
}
```

## Border

The CSS property to change the border of an element to Hex AC6F6D is called "border". The border property can be set on classes, ids or directly on the HTML element.

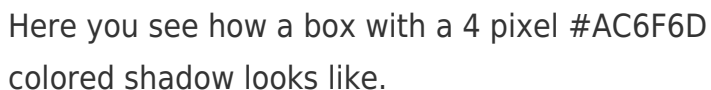
This example shows the color as border, it can be applied via the CSS property "border" or "border-color".

```
.border, #border, table{ border:4px solid
#AC6F6D }
```

If only the border color should be changed use the property `border-color`.

```
.border{ border-color:#AC6F6D }
```

If you want to add a box shadow in that color use:



Here you see how a box with a 4 pixel `#AC6F6D` colored shadow looks like.

```
.boxshadow{ -moz-box-shadow:4px 4px 4px  
4px #AC6F6D; -webkit-box-shadow:4px 4px  
4px 4px #AC6F6D; box-shadow:4px 4px 4px  
4px #AC6F6D }
```

# Background

The CSS property to change the background color of an element to Hex AC6F6D is called "background". The background property can be set on classes, ids or directly on the HTML element.

```
.background, #background, body{  
background:#AC6F6D }
```

If only the background color should be changed can be used:

```
.background{ background-color:#AC6F6D }
```

This example shows the color as background, it is applied via the CSS property "background".

To optimize and compress your CSS code, you can use our [online CSS compressor and optimizer](#) based on csstidy. If you want to create a linear or radial gradient as background or border, check our [CSS Gradient Generator](#).



Hey! You found this booklet interesting? Support Converting Colors with the new Membership Option!

The pro membership hides all ads, plus gives you double the colors in the color bucket, and more awesome pro features!

**[Learn more, Memberships starting at \\$2.50/m!](#)**

**Follow me  
on Twitter!**

@ConvertingColor