

Converting Colors

Hex(AC774D)

Have a look what the booklet for
Hex(AC774D) contains.

Hex(AC774D)	3
<i>Conversions</i>	4
<i>Details</i>	6
<i>Harmonies</i>	11
<i>Previews</i>	23
<i>Color Blindness Simulation</i>	26
<i>CSS Examples</i>	29

Color

Hex(AC774D)

Conversions

Conversions Part 1

Format	Color
Hex	AC774D
RGB	172, 119, 77
RGB Percent	67%, 47%, 30%
CMY	0.3255, 0.5333, 0.6980
CMYK	0.00, 0.31, 0.55, 0.33
HSL	27°, 38%, 49%
HSV	27°, 55%, 67%
XYZ	24.9496, 22.5001, 10.0491
YIQ	130.0590, 45.0700, -1.8260

Conversions

Conversions Part 2

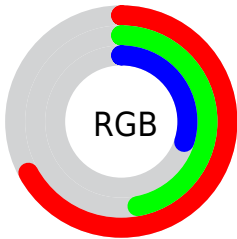
Format	Color
R_{YB}	172, 152, 77
Decimal	11302733
CIE _{Lab}	54.55, 16.03, 31.26
CIE _{LCh}	55, 35.133, 62.848
Yxy	22.5001, 0.4339, 0.3913
Android (android.graphics.Color)	4289492813 (0xFFAC774D)
YUV	130.0590, -26.1581, 36.7823
Hunter-Lab	47.4343, 10.8779, 20.6432

Details

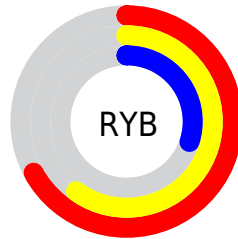
The Hex color **AC774D** is a dark color, and the websafe version is hex **996633**. A complement of this color would be **4D82AC**, and the grayscale version is **828282**.

A 20% lighter version of the original color is **E6AB7F**, and **75461F** is the 20% darker color. If you saturate the color by 10%, you get **AC6D3C**, and if you desaturate by 10%, it is **AC815E**.

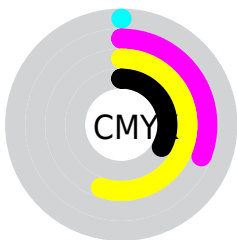
Distribution



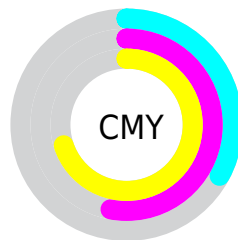
- Red (67%)
- Green (47%)
- Blue (30%)



- Red (67%)
- Yellow (60%)
- Blue (30%)



- Cyan (0%)
- Magenta (31%)
- Yellow (55%)
- Black (33%)



- Cyan (33%)
- Magenta (53%)
- Yellow (70%)

Brightness & Saturation Gradients

These gradients show how the Hex color AC774D changes by changing the brightness by 10 percent. The first figure shows a shift by +10% for each color and the second figure -10%.

Similar to the brightness gradients but the following saturation gradients show a change of the Hex color AC774D by changing the saturation by 10% instead.

 AC774D

 AC774D

FFFFFF

 905E36

 E6AB7F

 75461F

 FFC799

 5A3008

 FFE3B4

 401A00

 FFFFD0

 270300

 FFFFEC

 000000

 AC774D

 AC774D

 AC6D3C

 AC815E

 AC642B

 AC8A6F

■ AC5A19

■ AC9481

■ AC5108

■ AC9D92

■ AC4C00

■ ACA7A3

■ ACB1B4

■ ACBAC5

■ ACC4D7

■ ACCDE8

Harmonies

Analogous

The Analogous color harmony consists of three colors that are next to each other on the color wheel.



BB6E63



AC774D



938245

Triad

The Triadic color harmony groups three colors that are evenly spaced from another and form a triangle on the color wheel.



AC774D



139284



897AB6

Complementary

The Complementary color scheme is a pair of colors which are on the opposite of each other on the color wheel.



AC774D



4D82AC

Split Complementary

Split-complementary colors differ from the complementary color scheme. The scheme consists of three colors, the original color and two neighbors of the complement color.



5885BF



AC774D



0091A2

Square

The Square scheme is like the rectangle color scheme, but the four colors are evenly spaced on the color wheel.



AC774D



4D9066



028DB8



AB6F9F

Rectangle

The Rectangle color scheme consists of four colors that form a rectangle on the color wheel.



AC774D



7E8849



028DB8



7B7DBA

Sweetspot

The Sweet Spot groups the original color and five complimentary colors.



AC774D



E0CBBA



AC4D83



70645A



F0F0F0



707070

Same Dimension

The Same Dimension uses a secret algorithm to generate beautiful new colors.



AC774D



E08E4C



ACA64D



57524E



964300



170A00

Inverse Universe

The Inverse Universe completely reimagines the original color for something new.



4D82AC



4C9FE0



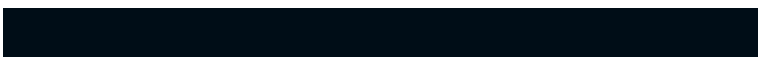
4D53AC



4E5357



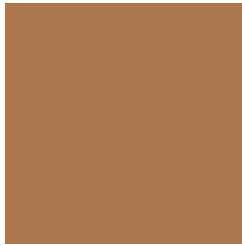
005496



000D17

Previews

White Background



This preview shows how the Hex color AC774D looks on a white background.

Color Contrast Check

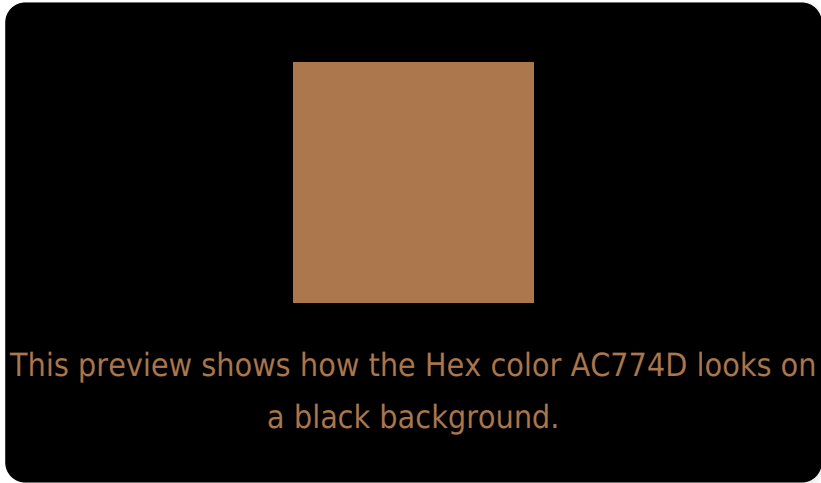
Large Text (above 18pt) WCAG AA ✓ Pass

Any Text WCAG AA × Fail

Large Text (above 18pt) WCAG AAA × Fail

Any Text WCAG AAA × Fail

Black Background



Color Contrast Check

Large Text (above 18pt) WCAG AA ✓ Pass

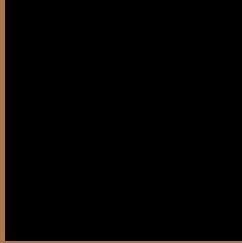
Any Text WCAG AA ✓ Pass

Large Text (above 18pt) WCAG AAA ✓ Pass

Any Text WCAG AAA × Fail

If you want to check with other color combinations, try the [Color Contrast Checker](#).

Hex AC774D Background



This preview shows how black text looks on a background with the Hex color AC774D.



This preview shows how white text looks on a background with the Hex color AC774D.

Color Blindness Simulation

Color vision deficiency is a very complex topic, and I could not describe the different causes any better than Wikipedia does, so if you want to learn more, you should check out their [article about color blindness](#).

Dichromacy



Original Color
AC774D

Protanopia
8F8351

Deuteranopia
9F7D4C



Tritanopia
B0717A

Trichromacy



Original Color
AC774D

Protanomaly
9A7F50

Deuteranomaly
A47B4C

Tritanomaly
AF736A

Monochromacy



Original Color
AC774D

Achromatopsia
828282

Achromatomaly
917E6F

CSS Examples

Text

The CSS property to change the color of the text to Hex AC774D is called "color". The color property can be set on classes, ids or directly on the HTML element.

This example shows how text in the color #AC774D looks like.

```
.text, #text, p{  
    color:#AC774D  
}
```

If you want to add a text shadow in that color use the text-shadow property, you can generate a text shadow directly with our [CSS Text Shadow Generator](#).

Here you see how black text with a 4 pixel #AC774D colored shadow looks like.

```
.shadow{ text-shadow: 4px 4px 2px #AC774D
}
```

Border

The CSS property to change the border of an element to Hex AC774D is called "border". The border property can be set on classes, ids or directly on the HTML element.

This example shows the color as border, it can be applied via the CSS property "border" or "border-color".

```
.border, #border, table{ border:4px solid
#AC774D }
```

If only the border color should be changed use the property `border-color`.

```
.border{ border-color:#AC774D }
```

If you want to add a box shadow in that color use:

Here you see how a box with a 4 pixel #AC774D colored shadow looks like.

```
.boxshadow{ -moz-box-shadow:4px 4px 4px  
4px #AC774D; -webkit-box-shadow:4px 4px  
4px 4px #AC774D; box-shadow:4px 4px 4px  
4px #AC774D }
```

Background

The CSS property to change the background color of an element to Hex AC774D is called "background". The background property can be set on classes, ids or directly on the HTML element.

```
.background, #background, body{  
background:#AC774D }
```

If only the background color should be changed can be used:

```
.background{ background-color:#AC774D }
```

This example shows the color as background, it is applied via the CSS property "background".

To optimize and compress your CSS code, you can use our [online CSS compressor and optimizer](#) based on csstidy. If you want to create a linear or radial gradient as background or border, check our [CSS Gradient Generator](#).

Hey! You found this booklet interesting? Support Converting Colors with the new Membership Option!

The pro membership hides all ads, plus gives you double the colors in the color bucket, and more awesome pro features!

[Learn more, Memberships starting at \\$2.50/m!](#)

**Follow me
on Twitter!**

@ConvertingColor