

# Converting Colors

Hex(AC7D4E)

Have a look what the booklet for  
Hex(AC7D4E) contains.

<b>Hex(AC7D4E)</b> .....	3
<i><b>Conversions</b></i> .....	4
<i><b>Details</b></i> .....	6
<i><b>Harmonies</b></i> .....	11
<i><b>Previews</b></i> .....	23
<i><b>Color Blindness Simulation</b></i> .....	26
<i><b>CSS Examples</b></i> .....	29

# Color

Hex(AC7D4E)

# Conversions

## Conversions Part 1

<b>Format</b>	<b>Color</b>
Hex	AC7D4E
RGB	172, 125, 78
RGB Percent	67%, 49%, 31%
CMY	0.3255, 0.5098, 0.6941
CMYK	0.00, 0.27, 0.55, 0.33
HSL	30°, 38%, 49%
HSV	30°, 55%, 67%
XYZ	25.7220, 23.9879, 10.4822
YIQ	133.6950, 43.0990, -4.6530

# Conversions

## Conversions Part 2

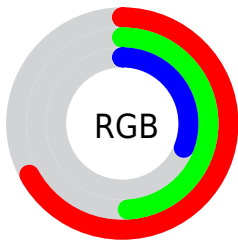
<b>Format</b>	<b>Color</b>
R <sub>YB</sub>	172, 172, 78
Decimal	11304270
CIE Lab	56.08, 12.74, 32.61
CIE LCh	56, 35.007, 68.654
Yxy	23.9879, 0.4273, 0.3985
Android (android.graphics.Color)	4289494350 (0xFFAC7D4E)
YUV	133.6950, -27.4576, 33.5935
Hunter-Lab	48.9775, 8.0341, 21.5950

# Details

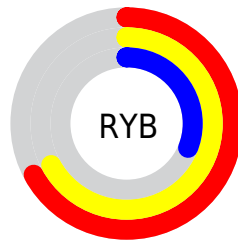
The Hex color **AC7D4E** is a dark color, and the websafe version is hex **996633**. A complement of this color would be **4E7DAC**, and the grayscale version is **868686**.

A 20% lighter version of the original color is **E6B280**, and **754C20** is the 20% darker color. If you saturate the color by 10%, you get **AC743D**, and if you desaturate by 10%, it is **AC865F**.

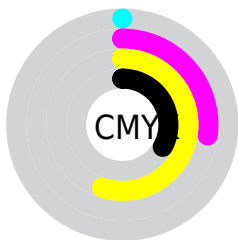
# Distribution



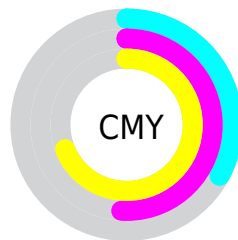
- Red (67%)
- Green (49%)
- Blue (31%)



- Red (67%)
- Yellow (67%)
- Blue (31%)



- Cyan (0%)
- Magenta (27%)
- Yellow (55%)
- Black (33%)



- Cyan (33%)
- Magenta (51%)
- Yellow (69%)

# Brightness & Saturation Gradients

These gradients show how the Hex color AC7D4E changes by changing the brightness by 10 percent. The first figure shows a shift by +10% for each color and the second figure -10%.

Similar to the brightness gradients but the following saturation gradients show a change of the Hex color AC7D4E by changing the saturation by 10% instead.



 AC7D4E

 AC7D4E

FFFFFF

 906436

 E6B280

 754C20

 FFCD9A

 5A3508

 FFE9B5

 412000

 FFFFD1

 270B00

 FFFFEE

 000000

 AC7D4E

 AC7D4E

 AC743D

 AC865F

 AC6C2C

 AC8E70

 AC631A

 AC9782

 AC5B09

 AC9F93

 AC5600

 ACA8A4

 ACB1B5

 ACB9C6

 ACC2D8

 ACCAE9

# Harmonies

## Analogous

The Analogous color harmony consists of three colors that are next to each other on the color wheel.



BD7362



AC7D4E



918749

# Triad

The Triadic color harmony groups three colors that are evenly spaced from another and form a triangle on the color wheel.



AC7D4E



07978F



957BB6

# Complementary

The Complementary color scheme is a pair of colors which are on the opposite of each other on the color wheel.



AC7D4E



4E7DAC

# Split Complementary

Split-complementary colors differ from the complementary color scheme. The scheme consists of three colors, the original color and two neighbors of the complement color.



6786C2



AC7D4E



0095AB

# Square

The Square scheme is like the rectangle color scheme, but the four colors are evenly spaced on the color wheel.



AC7D4E



49956F



2890BE



B3719D

# Rectangle

The Rectangle color scheme consists of four colors that form a rectangle on the color wheel.



AC7D4E



7C8D50



2890BE



877FBC



# Sweetspot

The Sweet Spot groups the original color and five complimentary colors.



AC7D4E



E0CEBC



AC4E7D



70665B



F0F0F0



707070



# Same Dimension

The Same Dimension uses a secret algorithm to generate beautiful new colors.



AC7D4E



E0964C



ACAA4E



57524E



964B00



170B00



# Inverse Universe

The Inverse Universe completely reimagines the original color for something new.



4E7DAC



4C96E0



4E4EAC



4E5257



004B96

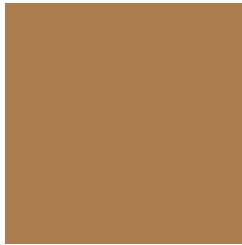


000B17



# Previews

## White Background



This preview shows how the Hex color AC7D4E looks on a white background.

## Color Contrast Check

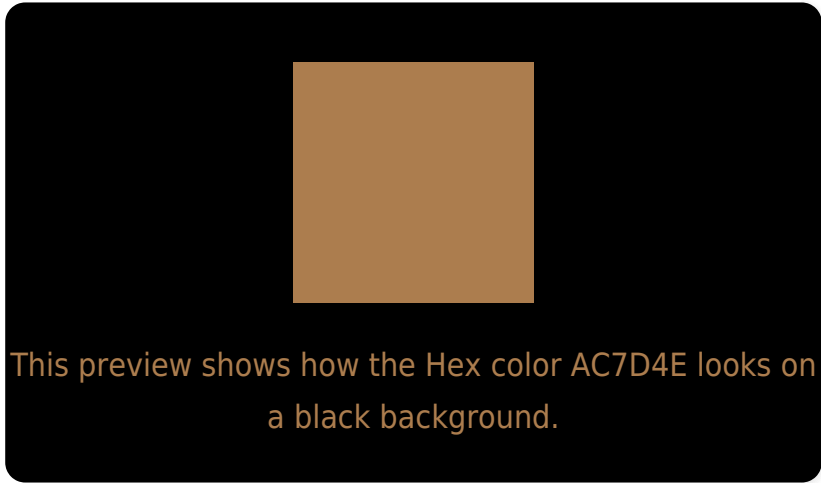
Large Text (above 18pt) WCAG AA ✓ Pass

Any Text WCAG AA × Fail

Large Text (above 18pt) WCAG AAA × Fail

Any Text WCAG AAA × Fail

# Black Background



## Color Contrast Check

Large Text (above 18pt) WCAG AA ✓ Pass

Any Text WCAG AA ✓ Pass

Large Text (above 18pt) WCAG AAA ✓ Pass

Any Text WCAG AAA × Fail

If you want to check with other color combinations, try the [Color Contrast Checker](#).



## Hex AC7D4E Background



This preview shows how black text looks on a background with the Hex color AC7D4E.



This preview shows how white text looks on a background with the Hex color AC7D4E.

# Color Blindness Simulation

Color vision deficiency is a very complex topic, and I could not describe the different causes any better than Wikipedia does, so if you want to learn more, you should check out their [article about color blindness](#).

## Dichromacy



**Original Color**  
AC7D4E

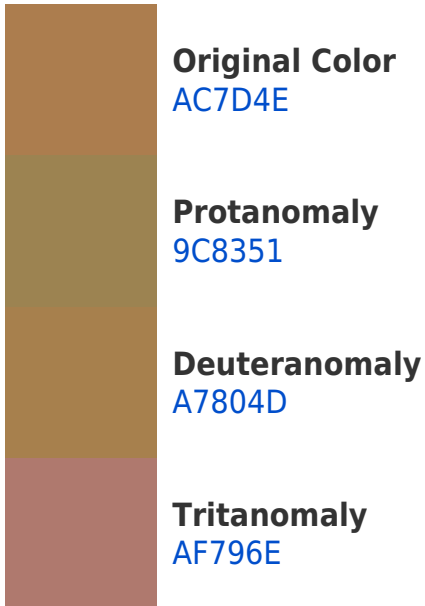
**Protanopia**  
938752

**Deuteranopia**  
A4814D

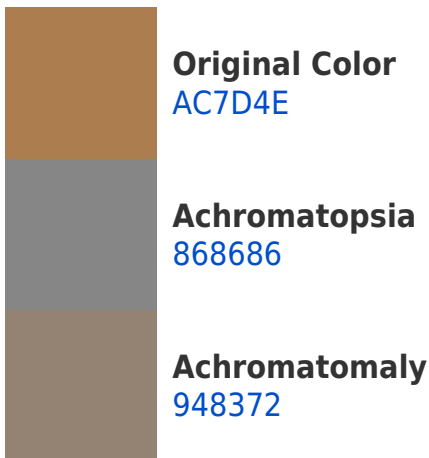


**Tritanopia**  
B07780

# Trichromacy



# Monochromacy



# CSS Examples

## Text

The CSS property to change the color of the text to Hex AC7D4E is called "color". The color property can be set on classes, ids or directly on the HTML element.

This example shows how text in the color #AC7D4E looks like.

```
.text, #text, p{  
    color:#AC7D4E  
}
```

If you want to add a text shadow in that color use the text-shadow property, you can generate a text shadow directly with our [CSS Text Shadow Generator](#).

Here you see how black text with a 4 pixel #AC7D4E colored shadow looks like.

```
.shadow{ text-shadow: 4px 4px 2px #AC7D4E
}
```

## Border

The CSS property to change the border of an element to Hex AC7D4E is called "border". The border property can be set on classes, ids or directly on the HTML element.

This example shows the color as border, it can be applied via the CSS property "border" or "border-color".

```
.border, #border, table{ border:4px solid
#AC7D4E }
```

If only the border color should be changed use the property `border-color`.

```
.border{ border-color:#AC7D4E }
```

If you want to add a box shadow in that color use:

Here you see how a box with a 4 pixel #AC7D4E colored shadow looks like.

```
.boxshadow{ -moz-box-shadow:4px 4px 4px  
4px #AC7D4E; -webkit-box-shadow:4px 4px  
4px 4px #AC7D4E; box-shadow:4px 4px 4px  
4px #AC7D4E }
```

# Background

The CSS property to change the background color of an element to Hex AC7D4E is called "background". The background property can be set on classes, ids or directly on the HTML element.

```
.background, #background, body{  
background:#AC7D4E }
```

If only the background color should be changed can be used:

```
.background{ background-color:#AC7D4E }
```

This example shows the color as background, it is applied via the CSS property "background".

To optimize and compress your CSS code, you can use our [online CSS compressor and optimizer](#) based on csstidy. If you want to create a linear or radial gradient as background or border, check our [CSS Gradient Generator](#).



Hey! You found this booklet interesting? Support Converting Colors with the new Membership Option!

The pro membership hides all ads, plus gives you double the colors in the color bucket, and more awesome pro features!

**[Learn more, Memberships starting at \\$2.50/m!](#)**

**Follow me  
on Twitter!**

@ConvertingColor