

Converting Colors

Hex(AC7F7F)

Have a look what the booklet for
Hex(AC7F7F) contains.

Hex(AC7F7F)	3
<i>Conversions</i>	4
<i>Details</i>	6
<i>Harmonies</i>	11
<i>Previews</i>	23
<i>Color Blindness Simulation</i>	26
<i>CSS Examples</i>	29

Color

Hex(AC7F7F)

Conversions

Conversions Part 1

Format	Color
Hex	AC7F7F
RGB	172, 127, 127
RGB Percent	67%, 50%, 50%
CMY	0.3255, 0.5020, 0.5020
CMYK	0.00, 0.26, 0.26, 0.33
HSL	0°, 21%, 59%
HSV	0°, 26%, 67%
XYZ	28.4334, 25.4817, 23.4985
YIQ	140.4550, 26.8200, 9.5400

Conversions

Conversions Part 2

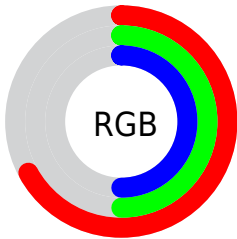
Format	Color
R_{YB}	172, 127, 127
Decimal	11304831
CIE _{Lab}	57.54, 17.41, 6.83
CIE _{LCh}	58, 18.702, 21.422
Yxy	25.4817, 0.3673, 0.3292
Android (android.graphics.Color)	4289494911 (0xFFAC7F7F)
YUV	140.4550, -6.6333, 27.6650
Hunter-Lab	50.4794, 12.2042, 7.7357

Details

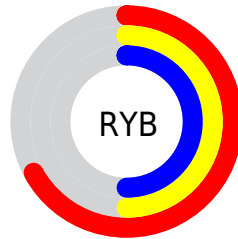
The Hex color **AC7F7F** is a dark color, and the websafe version is hex **996666**. A complement of this color would be **7FACAC**, and the grayscale version is **8D8D8D**.

A 20% lighter version of the original color is **E4B4B4**, and **774E4E** is the 20% darker color. If you saturate the color by 10%, you get **AC6E6E**, and if you desaturate by 10%, it is **AC9090**.

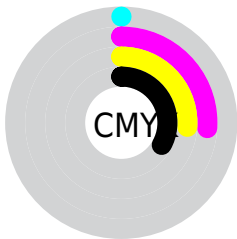
Distribution



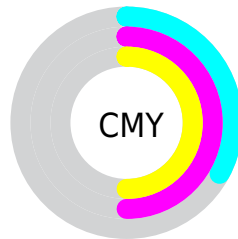
- Red (67%)
- Green (50%)
- Blue (50%)



- Red (67%)
- Yellow (50%)
- Blue (50%)



- Cyan (0%)
- Magenta (26%)
- Yellow (26%)
- Black (33%)



- Cyan (33%)
- Magenta (50%)
- Yellow (50%)

Brightness & Saturation Gradients

These gradients show how the Hex color AC7F7F changes by changing the brightness by 10 percent. The first figure shows a shift by +10% for each color and the second figure -10%.

Similar to the brightness gradients but the following saturation gradients show a change of the Hex color AC7F7F by changing the saturation by 10% instead.

 AC7F7F

 AC7F7F

FFFFFF

 916666

 E4B4B4

 774E4E

 FFD0CF

 5D3637

 FFECEB

 442022

 2D0B0C

 100000

 000000

 AC7F7F

 AC7F7F

 AC6E6E

 AC9090

 AC5D5D

 ACA1A1

 AC4B4B

 ACB3B3

 AC3A3A

 ACC4C4

 AC2929

 ACD5D5

 AC1818

 ACE6E6

 AC0707

 ACF7F7

 AC0000

 ACFFFF

Harmonies

Analogous

The Analogous color harmony consists of three colors that are next to each other on the color wheel.



A87F90



AC7F7F



A78271

Triad

The Triadic color harmony groups three colors that are evenly spaced from another and form a triangle on the color wheel.



AC7F7F



779175



718DAA

Complementary

The Complementary color scheme is a pair of colors which are on the opposite of each other on the color wheel.



AC7F7F



7FACAC

Split Complementary

Split-complementary colors differ from the complementary color scheme. The scheme consists of three colors, the original color and two neighbors of the complement color.



6091A3



AC7F7F



669385

Square

The Square scheme is like the rectangle color scheme, but the four colors are evenly spaced on the color wheel.



AC7F7F



8A8D6C



5D9395



8788A8

Rectangle

The Rectangle color scheme consists of four colors that form a rectangle on the color wheel.



AC7F7F



A0866C



5D9395



6A8FA9

Sweetspot

The Sweet Spot groups the original color and five complimentary colors.



AC7F7F



E0CECE



AC7FAC



706565



F0F0F0



707070

Same Dimension

The Same Dimension uses a secret algorithm to generate beautiful new colors.



AC7F7F



E09B9B



AC967F



574E4E



960000



170000

Inverse Universe

The Inverse Universe completely reimagines the original color for something new.



7FACAC



9BE0E0



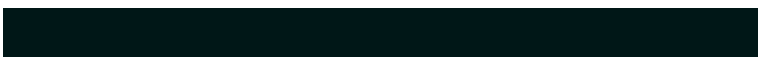
7F96AC



4E5757



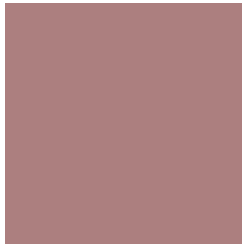
009696



001717

Previews

White Background



This preview shows how the Hex color AC7F7F looks on a white background.

Color Contrast Check

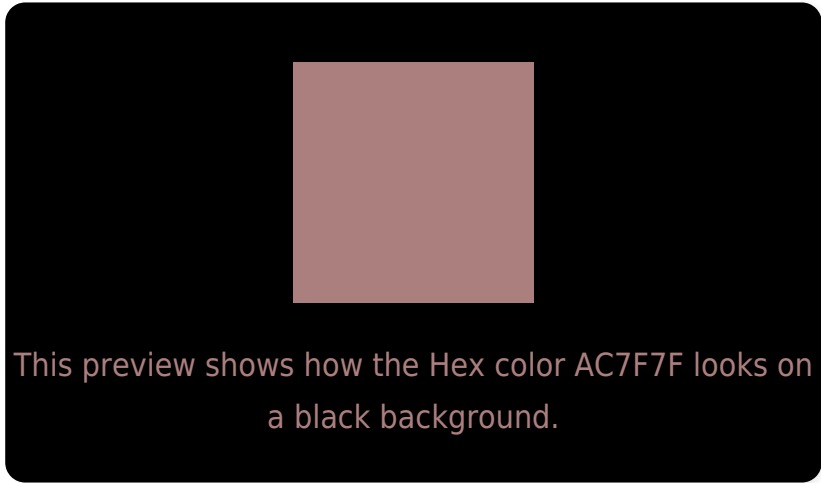
Large Text (above 18pt) WCAG AA ✓ Pass

Any Text WCAG AA × Fail

Large Text (above 18pt) WCAG AAA × Fail

Any Text WCAG AAA × Fail

Black Background



Color Contrast Check

Large Text (above 18pt) WCAG AA ✓ Pass

Any Text WCAG AA ✓ Pass

Large Text (above 18pt) WCAG AAA ✓ Pass

Any Text WCAG AAA × Fail

If you want to check with other color combinations, try the [Color Contrast Checker](#).

Hex AC7F7F Background



This preview shows how black text looks on a background with the Hex color AC7F7F.



This preview shows how white text looks on a background with the Hex color AC7F7F.

Color Blindness Simulation

Color vision deficiency is a very complex topic, and I could not describe the different causes any better than Wikipedia does, so if you want to learn more, you should check out their [article about color blindness](#).

Dichromacy



Original Color
AC7F7F

Protanopia
8E8A85

Deuteranopia
9D867E



Tritanopia
AD7E87

Trichromacy



Original Color
AC7F7F

Protanomaly
998683

Deuteranomaly
A2837E

Tritanomaly
AD7E84

Monochromacy



Original Color
AC7F7F

Achromatopsia
8C8C8C

Achromatomaly
988787

CSS Examples

Text

The CSS property to change the color of the text to Hex AC7F7F is called "color". The color property can be set on classes, ids or directly on the HTML element.

This example shows how text in the color #AC7F7F looks like.

```
.text, #text, p{  
    color:#AC7F7F  
}
```

If you want to add a text shadow in that color use the text-shadow property, you can generate a text shadow directly with our [CSS Text Shadow Generator](#).

Here you see how black text with a 4 pixel #AC7F7F colored shadow looks like.

```
.shadow{ text-shadow: 4px 4px 2px #AC7F7F
}
```

Border

The CSS property to change the border of an element to Hex AC7F7F is called "border". The border property can be set on classes, ids or directly on the HTML element.

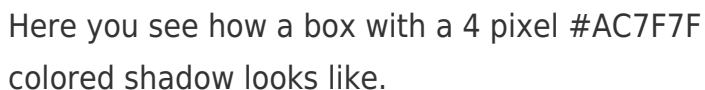
This example shows the color as border, it can be applied via the CSS property "border" or "border-color".

```
.border, #border, table{ border:4px solid
#AC7F7F }
```

If only the border color should be changed use the property `border-color`.

```
.border{ border-color:#AC7F7F }
```

If you want to add a box shadow in that color use:



Here you see how a box with a 4 pixel `#AC7F7F` colored shadow looks like.

```
.boxshadow{ -moz-box-shadow:4px 4px 4px  
4px #AC7F7F; -webkit-box-shadow:4px 4px  
4px 4px #AC7F7F; box-shadow:4px 4px 4px  
4px #AC7F7F }
```

Background

The CSS property to change the background color of an element to Hex AC7F7F is called "background". The background property can be set on classes, ids or directly on the HTML element.

```
.background, #background, body{  
background:#AC7F7F }
```

If only the background color should be changed can be used:

```
.background{ background-color:#AC7F7F }
```

This example shows the color as background, it is applied via the CSS property "background".

To optimize and compress your CSS code, you can use our [online CSS compressor and optimizer](#) based on csstidy. If you want to create a linear or radial gradient as background or border, check our [CSS Gradient Generator](#).

Hey! You found this booklet interesting? Support Converting Colors with the new Membership Option!

The pro membership hides all ads, plus gives you double the colors in the color bucket, and more awesome pro features!

[Learn more, Memberships starting at \\$2.50/m!](#)

**Follow me
on Twitter!**

@ConvertingColor