

# Converting Colors

Hex(AC7F94)

Have a look what the booklet for  
Hex(AC7F94) contains.

<b>Hex(AC7F94)</b> .....	3
<i><b>Conversions</b></i> .....	4
<i><b>Details</b></i> .....	6
<i><b>Harmonies</b></i> .....	11
<i><b>Previews</b></i> .....	23
<i><b>Color Blindness Simulation</b></i> .....	26
<i><b>CSS Examples</b></i> .....	29

**Color**

**Hex(AC7F94)**

# Conversions

## Conversions Part 1

<b>Format</b>	<b>Color</b>
Hex	AC7F94
RGB	172, 127, 148
RGB Percent	67%, 50%, 58%
CMY	0.3255, 0.5020, 0.4196
CMYK	0.00, 0.26, 0.14, 0.33
HSL	332°, 21%, 59%
HSV	332°, 26%, 67%
XYZ	29.9479, 26.0875, 31.4739
YIQ	142.8490, 20.0790, 16.0710

# Conversions

## Conversions Part 2

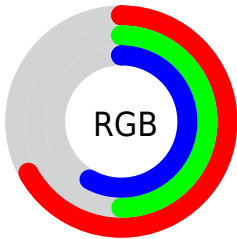
<b>Format</b>	<b>Color</b>
R <sub>Y</sub> B	172, 127, 148
Decimal	11304852
CIE Lab	58.12, 20.75, -4.45
CIE LCh	58, 21.223, 347.908
Yxy	26.0875, 0.3422, 0.2981
Android (android.graphics.Color)	4289494932 (0xFFAC7F94)
YUV	142.8490, 2.5394, 25.5654
Hunter-Lab	51.0759, 15.2790, -0.7824

# Details

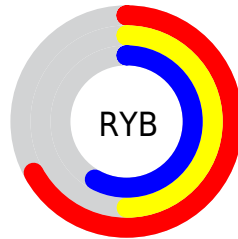
The Hex color **AC7F94** is a dark color, and the websafe version is hex **CC9999**. A complement of this color would be **7FAC97**, and the grayscale version is **8F8F8F**.

A 20% lighter version of the original color is **E4B4CA**, and **774D61** is the 20% darker color. If you saturate the color by 10%, you get **AC6E8B**, and if you desaturate by 10%, it is **AC909D**.

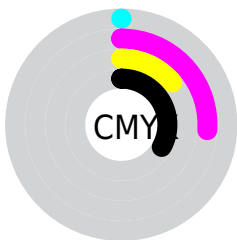
# Distribution



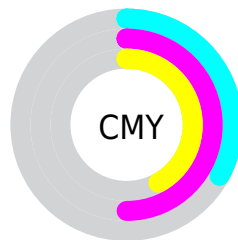
- Red (67%)
- Green (50%)
- Blue (58%)



- Red (67%)
- Yellow (50%)
- Blue (58%)



- Cyan (0%)
- Magenta (26%)
- Yellow (14%)
- Black (33%)



- Cyan (33%)
- Magenta (50%)
- Yellow (42%)

# Brightness & Saturation Gradients

These gradients show how the Hex color AC7F94 changes by changing the brightness by 10 percent. The first figure shows a shift by +10% for each color and the second figure -10%.

Similar to the brightness gradients but the following saturation gradients show a change of the Hex color AC7F94 by changing the saturation by 10% instead.



AC7F94

AC7F94

FFFFFF

91667A

E4B4CA

774D61

FFD0E6

5E364A

FFECFF

452033

2E0A1E

190003

000000

AC7F94

AC7F94

AC6E8B

AC909D

■ AC5D82

■ ACA1A6

■ AC4B78

■ ACB3B0

■ AC3A6F

■ ACC4B9

■ AC2966

■ ACD5C2

■ AC185D

■ ACE6CB

■ AC0754

■ ACF7D4

■ AC0050

■ ACFFDD

■ ACFFE7

# Harmonies

## Analogous

The Analogous color harmony consists of three colors that are next to each other on the color wheel.



9C83A5



AC7F94



B27F81

# Triad

The Triadic color harmony groups three colors that are evenly spaced from another and form a triangle on the color wheel.



AC7F94



8E8E68



5994A7

# Complementary

The Complementary color scheme is a pair of colors which are on the opposite of each other on the color wheel.



AC7F94



7FAC97

# Split Complementary

Split-complementary colors differ from the complementary color scheme. The scheme consists of three colors, the original color and two neighbors of the complement color.



579696



AC7F94



799372

# Square

The Square scheme is like the rectangle color scheme, but the four colors are evenly spaced on the color wheel.



AC7F94



A08868



649683



6B90B0

# Rectangle

The Rectangle color scheme consists of four colors that form a rectangle on the color wheel.



AC7F94



B08176



649683



5695A2



# Sweetspot

The Sweet Spot groups the original color and five complimentary colors.



AC7F94



E0CED7



977FAC



70656A



F0F0F0



707070



# Same Dimension

The Same Dimension uses a secret algorithm to generate beautiful new colors.



AC7F94



E09BBB



AC817F



574E52



960046



17000B



# Inverse Universe

The Inverse Universe completely reimagines the original color for something new.



AC7F94



E09BBB



7FABAC



574E52



960046

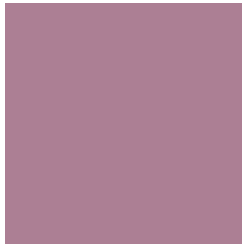


17000B



# Previews

## White Background



This preview shows how the Hex color AC7F94 looks on a white background.

## Color Contrast Check

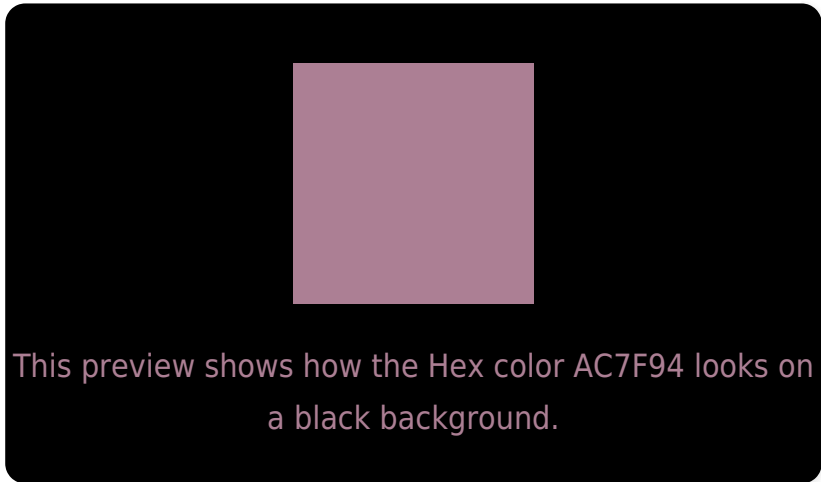
Large Text (above 18pt) WCAG AA ✓ Pass

Any Text WCAG AA × Fail

Large Text (above 18pt) WCAG AAA × Fail

Any Text WCAG AAA × Fail

# Black Background



## Color Contrast Check

Large Text (above 18pt) WCAG AA ✓ Pass

Any Text WCAG AA ✓ Pass

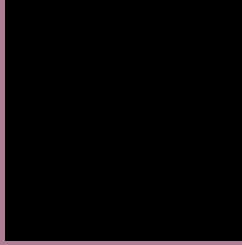
Large Text (above 18pt) WCAG AAA ✓ Pass

Any Text WCAG AAA × Fail

If you want to check with other color combinations, try the [Color Contrast Checker](#).



## Hex AC7F94 Background



This preview shows how black text looks on a background with the Hex color AC7F94.



This preview shows how white text looks on a background with the Hex color AC7F94.

# Color Blindness Simulation

Color vision deficiency is a very complex topic, and I could not describe the different causes any better than Wikipedia does, so if you want to learn more, you should check out their [article about color blindness](#).

## Dichromacy





**Tritanopia**  
AB818B

# Trichromacy



**Original Color**  
AC7F94

**Protanomaly**  
968798

**Deuteranomaly**  
9F8593

**Tritanomaly**  
AB808E

# Monochromacy



**Original Color**  
AC7F94

**Achromatopsia**  
8F8F8F

**Achromatomaly**  
9A8991

# CSS Examples

## Text

The CSS property to change the color of the text to Hex AC7F94 is called "color". The color property can be set on classes, ids or directly on the HTML element.

This example shows how text in the color #AC7F94 looks like.

```
.text, #text, p{  
    color:#AC7F94  
}
```

If you want to add a text shadow in that color use the text-shadow property, you can generate a text shadow directly with our [CSS Text Shadow Generator](#).

Here you see how black text with a 4 pixel #AC7F94 colored shadow looks like.

```
.shadow{ text-shadow: 4px 4px 2px #AC7F94
}
```

## Border

The CSS property to change the border of an element to Hex AC7F94 is called "border". The border property can be set on classes, ids or directly on the HTML element.

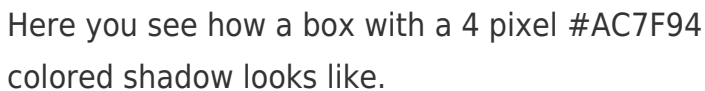
This example shows the color as border, it can be applied via the CSS property "border" or "border-color".

```
.border, #border, table{ border:4px solid
#AC7F94 }
```

If only the border color should be changed use the property `border-color`.

```
.border{ border-color:#AC7F94 }
```

If you want to add a box shadow in that color use:



Here you see how a box with a 4 pixel `#AC7F94` colored shadow looks like.

```
.boxshadow{ -moz-box-shadow:4px 4px 4px  
4px #AC7F94; -webkit-box-shadow:4px 4px  
4px 4px #AC7F94; box-shadow:4px 4px 4px  
4px #AC7F94 }
```

# Background

The CSS property to change the background color of an element to Hex AC7F94 is called "background". The background property can be set on classes, ids or directly on the HTML element.

```
.background, #background, body{  
background:#AC7F94 }
```

If only the background color should be changed can be used:

```
.background{ background-color:#AC7F94 }
```

This example shows the color as background, it is applied via the CSS property "background".

To optimize and compress your CSS code, you can use our [online CSS compressor and optimizer](#) based on csstidy. If you want to create a linear or radial gradient as background or border, check our [CSS Gradient Generator](#).



Hey! You found this booklet interesting? Support Converting Colors with the new Membership Option!

The pro membership hides all ads, plus gives you double the colors in the color bucket, and more awesome pro features!

**[Learn more, Memberships starting at \\$2.50/m!](#)**

**Follow me  
on Twitter!**

@ConvertingColor