

# Converting Colors

Hex(AC805D)

Have a look what the booklet for  
Hex(AC805D) contains.

<b>Hex(AC805D)</b> .....	3
<i><b>Conversions</b></i> .....	4
<i><b>Details</b></i> .....	6
<i><b>Harmonies</b></i> .....	11
<i><b>Previews</b></i> .....	23
<i><b>Color Blindness Simulation</b></i> .....	26
<i><b>CSS Examples</b></i> .....	29

**Color**

**Hex(AC805D)**

# Conversions

## Conversions Part 1

<b>Format</b>	<b>Color</b>
Hex	AC805D
RGB	172, 128, 93
RGB Percent	67%, 50%, 36%
CMY	0.3255, 0.4980, 0.6353
CMYK	0.00, 0.26, 0.46, 0.33
HSL	27°, 32%, 52%
HSV	27°, 46%, 67%
XYZ	26.7082, 24.9993, 13.7736
YIQ	137.1660, 37.4590, -1.5570

# Conversions

## Conversions Part 2

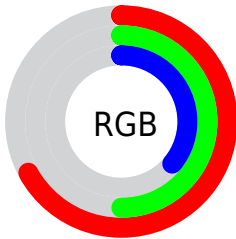
<b>Format</b>	<b>Color</b>
<b>R<sub>YB</sub></b>	172, 156, 93
Decimal	11305053
CIE <sub>Lab</sub>	57.07, 12.52, 25.59
CIE <sub>LCh</sub>	57, 28.490, 63.935
Yxy	24.9993, 0.4079, 0.3818
Android (android.graphics.Color)	4289495133 (0xFFAC805D)
YUV	137.1660, -21.7738, 30.5494
Hunter-Lab	49.9993, 7.8508, 18.6666

# Details

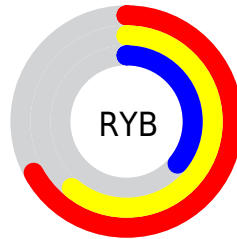
The Hex color **AC805D** is a dark color, and the websafe version is hex **CC9966**. A complement of this color would be **5D89AC**, and the grayscale version is **898989**.

A 20% lighter version of the original color is **E5B590**, and **754F2E** is the 20% darker color. If you saturate the color by 10%, you get **AC764C**, and if you desaturate by 10%, it is **AC8A6E**.

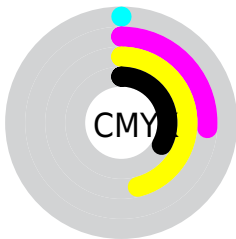
# Distribution



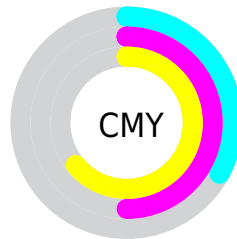
- Red (67%)
- Green (50%)
- Blue (36%)



- Red (67%)
- Yellow (61%)
- Blue (36%)



- Cyan (0%)
- Magenta (26%)
- Yellow (46%)
- Black (33%)



- Cyan (33%)
- Magenta (50%)
- Yellow (64%)

# Brightness & Saturation Gradients

These gradients show how the Hex color AC805D changes by changing the brightness by 10 percent. The first figure shows a shift by +10% for each color and the second figure -10%.

Similar to the brightness gradients but the following saturation gradients show a change of the Hex color AC805D by changing the saturation by 10% instead.



 AC805D

 AC805D

FFFFFF

 906745

 E5B590

 754F2E

 FFD0AA

 5B3819

 FFEDC6

 422200

 FFFFE2

 290E00

 000000

 AC805D

 AC805D

 AC764C

 AC8A6E

 AC6D3B

 AC937F

 AC6329

 AC9D91

 AC5A18

 ACA6A2

 AC5007

 ACB0B3

 AC4C00

 ACB9C4

 ACC3D5

 ACCDE7

 ACD6F8

# Harmonies

## Analogous

The Analogous color harmony consists of three colors that are next to each other on the color wheel.



B8796E



AC805D



978957

# Triad

The Triadic color harmony groups three colors that are evenly spaced from another and form a triangle on the color wheel.



AC805D



41978C



9081B2

# Complementary

The Complementary color scheme is a pair of colors which are on the opposite of each other on the color wheel.



AC805D



5D89AC

# Split Complementary

Split-complementary colors differ from the complementary color scheme. The scheme consists of three colors, the original color and two neighbors of the complement color.



6C8ABA



AC805D



3196A4

# Square

The Square scheme is like the rectangle color scheme, but the four colors are evenly spaced on the color wheel.



AC805D



5F9572



4691B5



AB7A9F

# Rectangle

The Rectangle color scheme consists of four colors that form a rectangle on the color wheel.



AC805D



858E5B



4691B5



8584B6



# Sweetspot

The Sweet Spot groups the original color and five complimentary colors.



AC805D



E0CFC1



AC5D8A



70665D



F0F0F0



707070



# Same Dimension

The Same Dimension uses a secret algorithm to generate beautiful new colors.



AC805D



E09C65



ACA75D



57524E



964300



170A00



# Inverse Universe

The Inverse Universe completely reimagines the original color for something new.



5D89AC



65AAE0



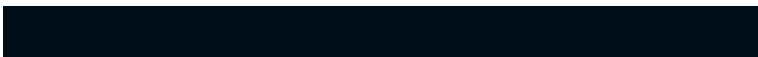
5D62AC



4E5357



005496

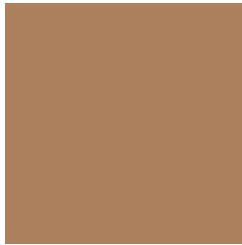


000D17



# Previews

## White Background



This preview shows how the Hex color AC805D looks on a white background.

## Color Contrast Check

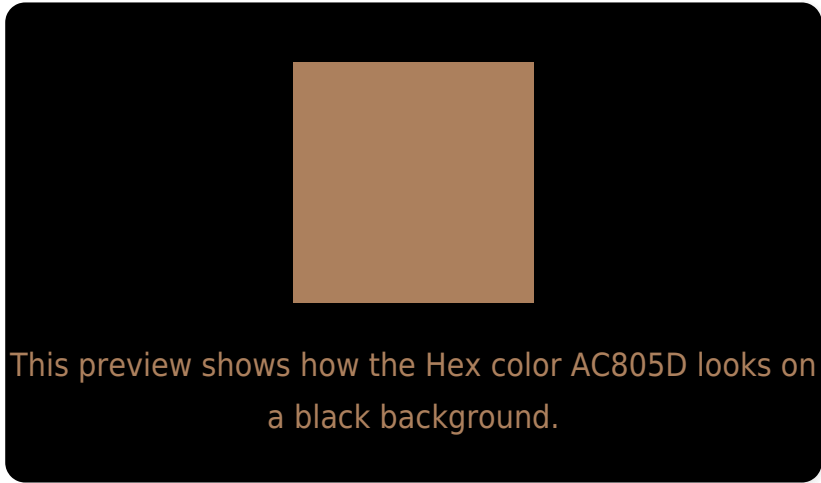
Large Text (above 18pt) WCAG AA ✓ Pass

Any Text WCAG AA × Fail

Large Text (above 18pt) WCAG AAA × Fail

Any Text WCAG AAA × Fail

# Black Background



## Color Contrast Check

Large Text (above 18pt) WCAG AA ✓ Pass

Any Text WCAG AA ✓ Pass

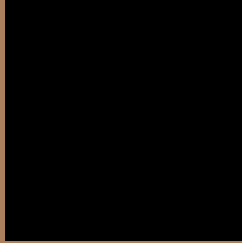
Large Text (above 18pt) WCAG AAA ✓ Pass

Any Text WCAG AAA × Fail

If you want to check with other color combinations, try the [Color Contrast Checker](#).



## Hex AC805D Background



This preview shows how black text looks on a background with the Hex color AC805D.



This preview shows how white text looks on a background with the Hex color AC805D.

# Color Blindness Simulation

Color vision deficiency is a very complex topic, and I could not describe the different causes any better than Wikipedia does, so if you want to learn more, you should check out their [article about color blindness](#).

## Dichromacy



**Original Color**  
AC805D

**Protanopia**  
948961

**Deuteranopia**  
A4835C



**Tritanopia**  
B07B84

# Trichromacy



**Original Color**  
AC805D

**Protanomaly**  
9D8660

**Deuteranomaly**  
A7825C

**Tritanomaly**  
AF7D76

# Monochromacy



**Original Color**  
AC805D

**Achromatopsia**  
898989

**Achromatomaly**  
968679

# CSS Examples

## Text

The CSS property to change the color of the text to Hex AC805D is called "color". The color property can be set on classes, ids or directly on the HTML element.

This example shows how text in the color #AC805D looks like.

```
.text, #text, p{  
    color:#AC805D  
}
```

If you want to add a text shadow in that color use the text-shadow property, you can generate a text shadow directly with our [CSS Text Shadow Generator](#).

Here you see how black text with a 4 pixel #AC805D colored shadow looks like.

```
.shadow{ text-shadow: 4px 4px 2px #AC805D
}
```

## Border

The CSS property to change the border of an element to Hex AC805D is called "border". The border property can be set on classes, ids or directly on the HTML element.

This example shows the color as border, it can be applied via the CSS property "border" or "border-color".

```
.border, #border, table{ border:4px solid
#AC805D }
```

If only the border color should be changed use the property `border-color`.

```
.border{ border-color:#AC805D }
```

If you want to add a box shadow in that color use:

Here you see how a box with a 4 pixel #AC805D colored shadow looks like.

```
.boxshadow{ -moz-box-shadow:4px 4px 4px  
4px #AC805D; -webkit-box-shadow:4px 4px  
4px 4px #AC805D; box-shadow:4px 4px 4px  
4px #AC805D }
```

# Background

The CSS property to change the background color of an element to Hex AC805D is called "background". The background property can be set on classes, ids or directly on the HTML element.

```
.background, #background, body{  
background:#AC805D }
```

If only the background color should be changed can be used:

```
.background{ background-color:#AC805D }
```

This example shows the color as background, it is applied via the CSS property "background".

To optimize and compress your CSS code, you can use our [online CSS compressor and optimizer](#) based on csstidy. If you want to create a linear or radial gradient as background or border, check our [CSS Gradient Generator](#).



Hey! You found this booklet interesting? Support Converting Colors with the new Membership Option!

The pro membership hides all ads, plus gives you double the colors in the color bucket, and more awesome pro features!

**[Learn more, Memberships starting at \\$2.50/m!](#)**

**Follow me  
on Twitter!**

@ConvertingColor