

Converting Colors

Hex(AC8356)

Have a look what the booklet for
Hex(AC8356) contains.

Hex(AC8356)	3
<i>Conversions</i>	4
<i>Details</i>	6
<i>Harmonies</i>	11
<i>Previews</i>	23
<i>Color Blindness Simulation</i>	26
<i>CSS Examples</i>	29

Color

Hex(AC8356)

Conversions

Conversions Part 1

Format	Color
Hex	AC8356
RGB	172, 131, 86
RGB Percent	67%, 51%, 34%
CMY	0.3255, 0.4863, 0.6627
CMYK	0.00, 0.24, 0.50, 0.33
HSL	31°, 34%, 51%
HSV	31°, 50%, 67%
XYZ	26.8093, 25.6751, 12.3469
YIQ	138.1290, 38.8810, -5.3030

Conversions

Conversions Part 2

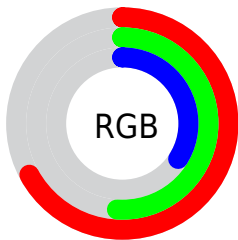
Format	Color
RYB	164, 172, 86
Decimal	11305814
CIELab	57.73, 10.12, 30.31
CIElCh	58, 31.956, 71.542
Yxy	25.6751, 0.4135, 0.3960
Android (android.graphics.Color)	4289495894 (0xFFAC8356)
YUV	138.1290, -25.6996, 29.7049
Hunter-Lab	50.6706, 5.7687, 21.0223

Details

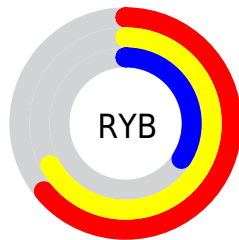
The Hex color **AC8356** is a dark color, and the websafe version is hex **CC9966**. A complement of this color would be **567FAC**, and the grayscale version is **8A8A8A**.

A 20% lighter version of the original color is **E5B888**, and **755227** is the 20% darker color. If you saturate the color by 10%, you get **AC7B45**, and if you desaturate by 10%, it is **AC8B67**.

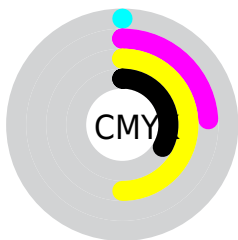
Distribution



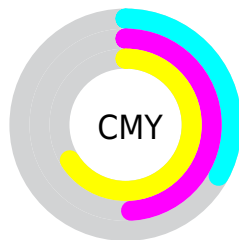
- Red (67%)
- Green (51%)
- Blue (34%)



- Red (64%)
- Yellow (67%)
- Blue (34%)



- Cyan (0%)
- Magenta (24%)
- Yellow (50%)
- Black (33%)



- Cyan (33%)
- Magenta (49%)
- Yellow (66%)

Brightness & Saturation Gradients

These gradients show how the Hex color AC8356 changes by changing the brightness by 10 percent. The first figure shows a shift by +10% for each color and the second figure -10%.

Similar to the brightness gradients but the following saturation gradients show a change of the Hex color AC8356 by changing the saturation by 10% instead.

 AC8356

 AC8356

FFFFFF

 906A3E

 E5B888

 755227

 FFD4A3

 5B3B11

 FFF0BE

 422500

 FFFFDA

 291100

 FFFFF7

 010000

 000000

 AC8356

 AC8356

 AC7B45

 AC8B67

 AC7334

 AC9378

 AC6A22

 AC9C8A

 AC6211

 ACA49B

 AC5A00

 ACACAC

 ACB4BD

 ACBCCE

 ACC5E0

 ACCDF1

Harmonies

Analogous

The Analogous color harmony consists of three colors that are next to each other on the color wheel.



BD7A67



AC8356



938C53

Triad

The Triadic color harmony groups three colors that are evenly spaced from another and form a triangle on the color wheel.



AC8356



2A9A95



9C80B5

Complementary

The Complementary color scheme is a pair of colors which are on the opposite of each other on the color wheel.



AC8356



567FAC

Split Complementary

Split-complementary colors differ from the complementary color scheme. The scheme consists of three colors, the original color and two neighbors of the complement color.



748AC1



AC8356



1898AF

Square

The Square scheme is like the rectangle color scheme, but the four colors are evenly spaced on the color wheel.



AC8356



519878



4492BF



B6779D

Rectangle

The Rectangle color scheme consists of four colors that form a rectangle on the color wheel.



AC8356



7E925A



4492BF



9083BA

Sweetspot

The Sweet Spot groups the original color and five complimentary colors.



AC8356



E0D0BF



AC5680



70675C



F0F0F0



707070

Same Dimension

The Same Dimension uses a secret algorithm to generate beautiful new colors.



AC8356



E0A05A



ABAC56



57534E



964F00



170C00

Inverse Universe

The Inverse Universe completely reimagines the original color for something new.



567FAC



5A9AE0



5756AC



4E5257



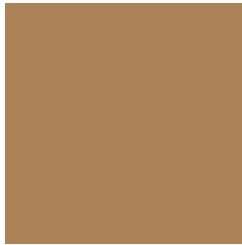
004896



000B17

Previews

White Background



This preview shows how the Hex color AC8356 looks on a white background.

Color Contrast Check

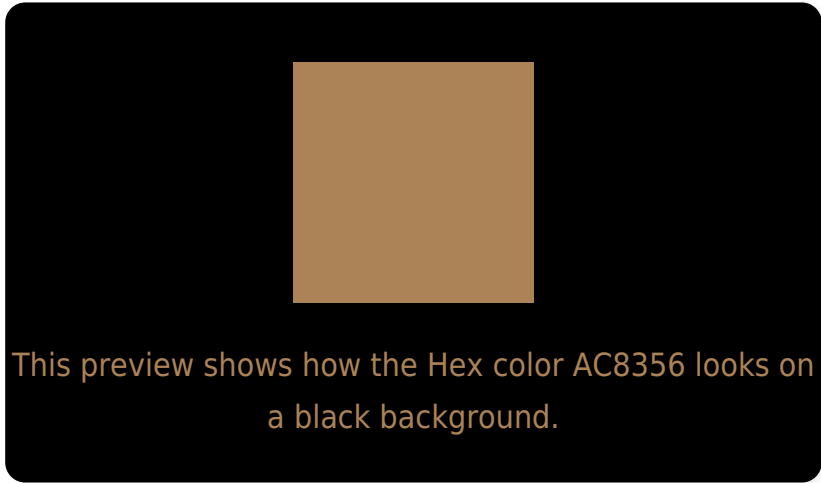
Large Text (above 18pt) WCAG AA ✓ Pass

Any Text WCAG AA × Fail

Large Text (above 18pt) WCAG AAA × Fail

Any Text WCAG AAA × Fail

Black Background



Color Contrast Check

Large Text (above 18pt) WCAG AA ✓ Pass

Any Text WCAG AA ✓ Pass

Large Text (above 18pt) WCAG AAA ✓ Pass

Any Text WCAG AAA × Fail

If you want to check with other color combinations, try the [Color Contrast Checker](#).

Hex AC8356 Background



This preview shows how black text looks on a background with the Hex color AC8356.



This preview shows how white text looks on a background with the Hex color AC8356.

Color Blindness Simulation

Color vision deficiency is a very complex topic, and I could not describe the different causes any better than Wikipedia does, so if you want to learn more, you should check out their [article about color blindness](#).


Dichromacy



Original Color
AC8356

Protanopia
978B59

Deuteranopia
A88556



Tritanopia
B07D87

Trichromacy



Original Color
AC8356

Protanomaly
9F8858

Deuteranomaly
A98456

Tritanomaly
AF7F75

Monochromacy



Original Color
AC8356

Achromatopsia
8A8A8A

Achromatomaly
968777

CSS Examples

Text

The CSS property to change the color of the text to Hex AC8356 is called "color". The color property can be set on classes, ids or directly on the HTML element.

This example shows how text in the color #AC8356 looks like.

```
.text, #text, p{  
    color:#AC8356  
}
```

If you want to add a text shadow in that color use the text-shadow property, you can generate a text shadow directly with our [CSS Text Shadow Generator](#).

Here you see how black text with a 4 pixel #AC8356 colored shadow looks like.

```
.shadow{ text-shadow: 4px 4px 2px #AC8356
}
```

Border

The CSS property to change the border of an element to Hex AC8356 is called "border". The border property can be set on classes, ids or directly on the HTML element.

This example shows the color as border, it can be applied via the CSS property "border" or "border-color".

```
.border, #border, table{ border:4px solid
#AC8356 }
```

If only the border color should be changed use the property `border-color`.

```
.border{ border-color:#AC8356 }
```

If you want to add a box shadow in that color use:

Here you see how a box with a 4 pixel #AC8356 colored shadow looks like.

```
.boxshadow{ -moz-box-shadow:4px 4px 4px  
4px #AC8356; -webkit-box-shadow:4px 4px  
4px 4px #AC8356; box-shadow:4px 4px 4px  
4px #AC8356 }
```

Background

The CSS property to change the background color of an element to Hex AC8356 is called "background". The background property can be set on classes, ids or directly on the HTML element.

```
.background, #background, body{  
background:#AC8356 }
```

If only the background color should be changed can be used:

```
.background{ background-color:#AC8356 }
```

This example shows the color as background, it is applied via the CSS property "background".

To optimize and compress your CSS code, you can use our [online CSS compressor and optimizer](#) based on csstidy. If you want to create a linear or radial gradient as background or border, check our [CSS Gradient Generator](#).

Hey! You found this booklet interesting? Support Converting Colors with the new Membership Option!

The pro membership hides all ads, plus gives you double the colors in the color bucket, and more awesome pro features!

[Learn more, Memberships starting at \\$2.50/m!](#)

**Follow me
on Twitter!**

@ConvertingColor