

Converting Colors

Hex(AC8655)

Have a look what the booklet for
Hex(AC8655) contains.

Hex(AC8655)	3
<i>Conversions</i>	4
<i>Details</i>	6
<i>Harmonies</i>	11
<i>Previews</i>	23
<i>Color Blindness Simulation</i>	26
<i>CSS Examples</i>	29

Color

Hex(AC8655)

Conversions

Conversions Part 1

Format	Color
Hex	AC8655
RGB	172, 134, 85
RGB Percent	67%, 53%, 33%
CMY	0.3255, 0.4745, 0.6667
CMYK	0.00, 0.22, 0.51, 0.33
HSL	34°, 34%, 50%
HSV	34°, 51%, 67%
XYZ	27.1780, 26.4767, 12.2724
YIQ	139.7760, 38.3770, -7.1830

Conversions

Conversions Part 2

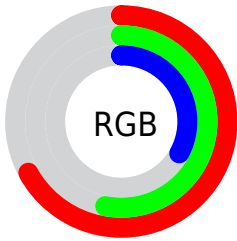
Format	Color
RYB	152, 172, 85
Decimal	11306581
CIELab	58.49, 8.34, 31.82
CIElCh	58, 32.891, 75.310
Yxy	26.4767, 0.4122, 0.4016
Android (android.graphics.Color)	4289496661 (0xFFAC8655)
YUV	139.7760, -27.0046, 28.2604
Hunter-Lab	51.4555, 4.2338, 21.8779

Details

The Hex color **AC8655** is a dark color, and the websafe version is hex **CC9966**. A complement of this color would be **557BAC**, and the grayscale version is **8C8C8C**.

A 20% lighter version of the original color is **E5BB88**, and **755526** is the 20% darker color. If you saturate the color by 10%, you get **AC7E44**, and if you desaturate by 10%, it is **AC8E66**.

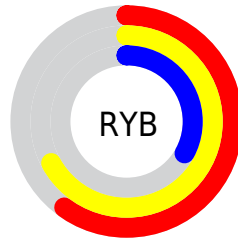
Distribution



Red (67%)

Green (53%)

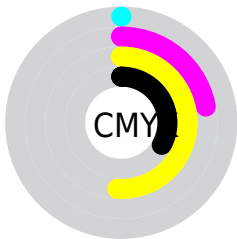
Blue (33%)



Red (60%)

Yellow (67%)

Blue (33%)

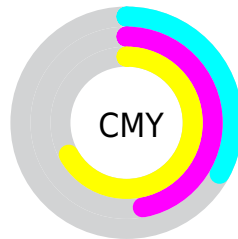


Cyan (0%)

Magenta (22%)

Yellow (51%)

Black (33%)



Cyan (33%)

Magenta (47%)

Yellow (67%)

Brightness & Saturation Gradients

These gradients show how the Hex color AC8655 changes by changing the brightness by 10 percent. The first figure shows a shift by +10% for each color and the second figure -10%.

Similar to the brightness gradients but the following saturation gradients show a change of the Hex color AC8655 by changing the saturation by 10% instead.

 AC8655

 AC8655

FFFFFF

 906D3D

 E5BB88

 755526

 FFD7A2

 5B3D0F

 FFF3BD

 422800

 FFFFD9

 291400

 FFFFF6

 050000

 000000

 AC8655

 AC8655

 AC7E44

 AC8E66

 AC7733

 AC9577

 AC6F21

 AC9D89

 AC6810

 ACA49A

 AC6100

 ACACAB

 ACB3BC

 ACBBCD

 ACC2DF

 ACCAF0

Harmonies

Analogous

The Analogous color harmony consists of three colors that are next to each other on the color wheel.



BF7C65



AC8655



919054

Triad

The Triadic color harmony groups three colors that are evenly spaced from another and form a triangle on the color wheel.



AC8655



219C9B



A280B5

Complementary

The Complementary color scheme is a pair of colors which are on the opposite of each other on the color wheel.



AC8655



557BAC

Split Complementary

Split-complementary colors differ from the complementary color scheme. The scheme consists of three colors, the original color and two neighbors of the complement color.



7B8AC4



AC8655



149AB5

Square

The Square scheme is like the rectangle color scheme, but the four colors are evenly spaced on the color wheel.



AC8655



4C9B7D



4994C4



BC789C

Rectangle

The Rectangle color scheme consists of four colors that form a rectangle on the color wheel.



AC8655



7C955D



4994C4



9783BC

Sweetspot

The Sweet Spot groups the original color and five complimentary colors.



AC8655



E0D2BF



AC557C



70675C



F0F0F0



707070

Same Dimension

The Same Dimension uses a secret algorithm to generate beautiful new colors.



AC8655



E0A558



A8AC55



57534E



965500



170D00

Inverse Universe

The Inverse Universe completely reimagines the original color for something new.



557BAC



5893E0



5955AC



4E5257



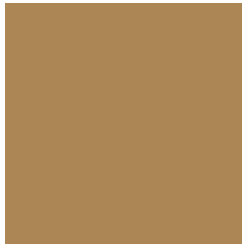
004296



000A17

Previews

White Background



This preview shows how the Hex color AC8655 looks on a white background.

Color Contrast Check

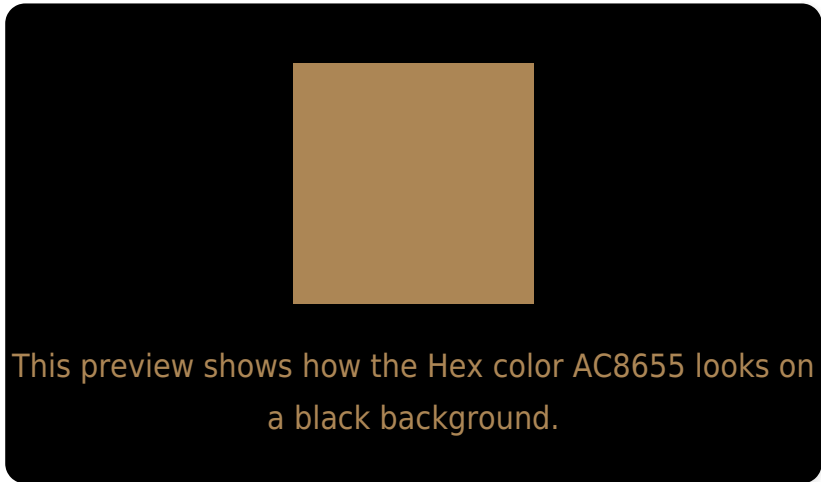
Large Text (above 18pt) WCAG AA ✓ Pass

Any Text WCAG AA × Fail

Large Text (above 18pt) WCAG AAA × Fail

Any Text WCAG AAA × Fail

Black Background



Color Contrast Check

Large Text (above 18pt) WCAG AA ✓ Pass

Any Text WCAG AA ✓ Pass

Large Text (above 18pt) WCAG AAA ✓ Pass

Any Text WCAG AAA × Fail

If you want to check with other color combinations, try the [Color Contrast Checker](#).

Hex AC8655 Background



This preview shows how black text looks on a background with the Hex color AC8655.



This preview shows how white text looks on a background with the Hex color AC8655.

Color Blindness Simulation

Color vision deficiency is a very complex topic, and I could not describe the different causes any better than Wikipedia does, so if you want to learn more, you should check out their [article about color blindness](#).

Dichromacy



Original Color
AC8655

Protanopia
9A8D58

Deuteranopia
AB8755

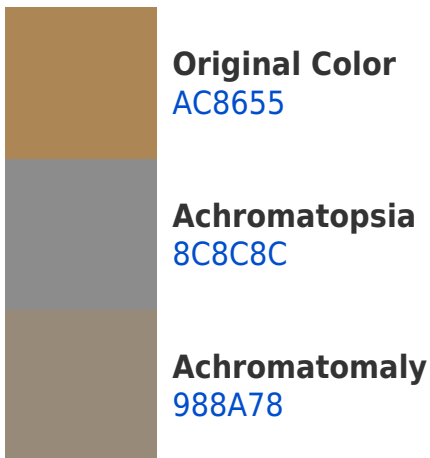


Tritanopia
B18089

Trichromacy



Monochromacy



CSS Examples

Text

The CSS property to change the color of the text to Hex AC8655 is called "color". The color property can be set on classes, ids or directly on the HTML element.

This example shows how text in the color #AC8655 looks like.

```
.text, #text, p{  
    color:#AC8655  
}
```

If you want to add a text shadow in that color use the text-shadow property, you can generate a text shadow directly with our [CSS Text Shadow Generator](#).

Here you see how black text with a 4 pixel #AC8655 colored shadow looks like.

```
.shadow{ text-shadow: 4px 4px 2px #AC8655
}
```

Border

The CSS property to change the border of an element to Hex AC8655 is called "border". The border property can be set on classes, ids or directly on the HTML element.

This example shows the color as border, it can be applied via the CSS property "border" or "border-color".

```
.border, #border, table{ border:4px solid
#AC8655 }
```

If only the border color should be changed use the property `border-color`.

```
.border{ border-color:#AC8655 }
```

If you want to add a box shadow in that color use:

Here you see how a box with a 4 pixel #AC8655 colored shadow looks like.

```
.boxshadow{ -moz-box-shadow:4px 4px 4px  
4px #AC8655; -webkit-box-shadow:4px 4px  
4px 4px #AC8655; box-shadow:4px 4px 4px  
4px #AC8655 }
```

Background

The CSS property to change the background color of an element to Hex AC8655 is called "background". The background property can be set on classes, ids or directly on the HTML element.

```
.background, #background, body{  
background:#AC8655 }
```

If only the background color should be changed can be used:

```
.background{ background-color:#AC8655 }
```

This example shows the color as background, it is applied via the CSS property "background".

To optimize and compress your CSS code, you can use our [online CSS compressor and optimizer](#) based on csstidy. If you want to create a linear or radial gradient as background or border, check our [CSS Gradient Generator](#).

Hey! You found this booklet interesting? Support Converting Colors with the new Membership Option!

The pro membership hides all ads, plus gives you double the colors in the color bucket, and more awesome pro features!

[Learn more, Memberships starting at \\$2.50/m!](#)

**Follow me
on Twitter!**

@ConvertingColor