

Converting Colors

Hex(AC8A66)

Have a look what the booklet for
Hex(AC8A66) contains.

Hex(AC8A66)	3
<i>Conversions</i>	4
<i>Details</i>	6
<i>Harmonies</i>	11
<i>Previews</i>	23
<i>Color Blindness Simulation</i>	26
<i>CSS Examples</i>	29

Color

Hex(AC8A66)

Conversions

Conversions Part 1

Format	Color
Hex	AC8A66
RGB	172, 138, 102
RGB Percent	67%, 54%, 40%
CMY	0.3255, 0.4588, 0.6000
CMYK	0.00, 0.20, 0.41, 0.33
HSL	31°, 30%, 54%
HSV	31°, 41%, 67%
XYZ	28.5000, 27.9069, 16.4548
YIQ	144.0620, 31.8200, -3.9880

Conversions

Conversions Part 2

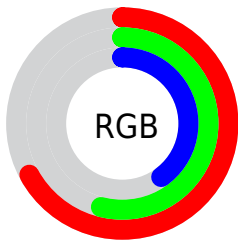
Format	Color
R_{YB}	168, 172, 102
Decimal	11307622
CIE _{Lab}	59.80, 7.92, 24.17
CIE _{LCh}	60, 25.431, 71.860
Yxy	27.9069, 0.3912, 0.3830
Android (android.graphics.Color)	4289497702 (0xFFAC8A66)
YUV	144.0620, -20.7366, 24.5016
Hunter-Lab	52.8270, 3.8530, 18.5109

Details

The Hex color **AC8A66** is a dark color, and the websafe version is hex **CC9966**. A complement of this color would be **6688AC**, and the grayscale version is **909090**.

A 20% lighter version of the original color is **E5BF99**, and **765837** is the 20% darker color. If you saturate the color by 10%, you get **AC8255**, and if you desaturate by 10%, it is **AC9277**.

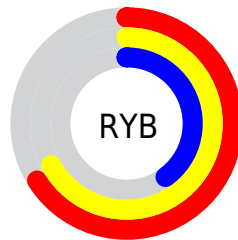
Distribution



Red (67%)

Green (54%)

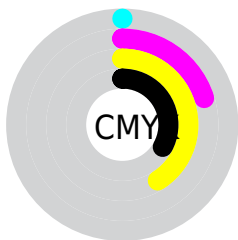
Blue (40%)



Red (66%)

Yellow (67%)

Blue (40%)

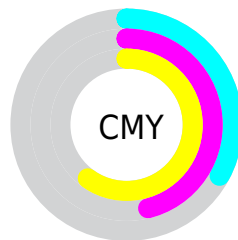


Cyan (0%)

Magenta (20%)

Yellow (41%)

Black (33%)



Cyan (33%)

Magenta (46%)

Yellow (60%)

Brightness & Saturation Gradients

These gradients show how the Hex color AC8A66 changes by changing the brightness by 10 percent. The first figure shows a shift by +10% for each color and the second figure -10%.

Similar to the brightness gradients but the following saturation gradients show a change of the Hex color AC8A66 by changing the saturation by 10% instead.

 AC8A66

 AC8A66

FFFFFF

 91714E

 E5BF99

 765837

 FFDBB4

 5C4120

 FFF8D0

 432B0A

 FFFFEC

 2C1600

 110000

 000000

 AC8A66

 AC8A66

 AC8255

 AC9277

■ AC7944

■ AC9B88

■ AC7132

■ ACA39A

■ AC6921

■ ACABAB

■ AC6010

■ ACB4BC

■ AC5800

■ ACBCCD

■ ACC4DE

■ ACCDF0

■ ACD5FF

Harmonies

Analogous

The Analogous color harmony consists of three colors that are next to each other on the color wheel.



BA8373



AC8A66



979264

Triad

The Triadic color harmony groups three colors that are evenly spaced from another and form a triangle on the color wheel.



AC8A66



4F9D98



9E87B1

Complementary

The Complementary color scheme is a pair of colors which are on the opposite of each other on the color wheel.



AC8A66



6688AC

Split Complementary

Split-complementary colors differ from the complementary color scheme. The scheme consists of three colors, the original color and two neighbors of the complement color.



808FBC



AC8A66



4B9BAD

Square

The Square scheme is like the rectangle color scheme, but the four colors are evenly spaced on the color wheel.



AC8A66



649B81



6096BA



B4819F

Rectangle

The Rectangle color scheme consists of four colors that form a rectangle on the color wheel.



AC8A66



87966A



6096BA



958AB6

Sweetspot

The Sweet Spot groups the original color and five complimentary colors.



AC8A66



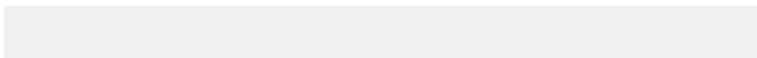
E0D3C5



AC6689



706960



F0F0F0



707070

Same Dimension

The Same Dimension uses a secret algorithm to generate beautiful new colors.



AC8A66



E0AB72



ACAC66



57524E



964D00



170C00

Inverse Universe

The Inverse Universe completely reimagines the original color for something new.



6688AC



72A8E0



6666AC



4E5257



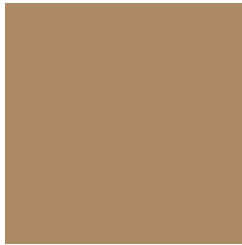
004996



000B17

Previews

White Background



This preview shows how the Hex color AC8A66 looks on a white background.

Color Contrast Check

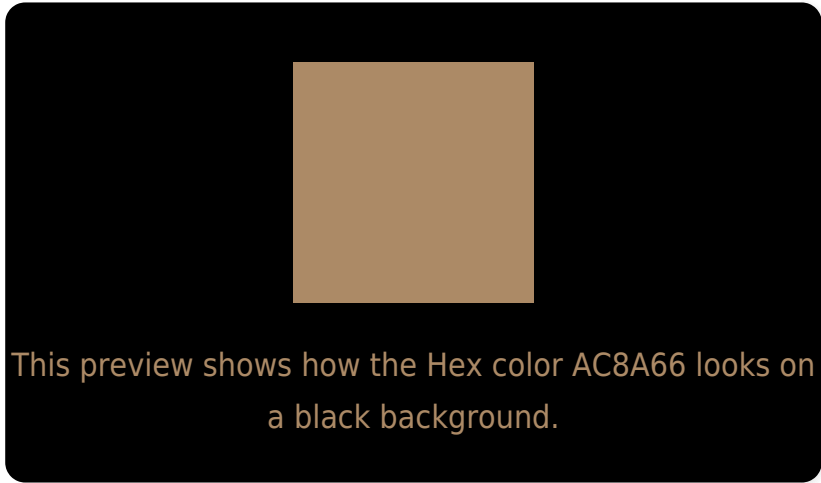
Large Text (above 18pt) WCAG AA ✓ Pass

Any Text WCAG AA × Fail

Large Text (above 18pt) WCAG AAA × Fail

Any Text WCAG AAA × Fail

Black Background



Color Contrast Check

Large Text (above 18pt) WCAG AA ✓ Pass

Any Text WCAG AA ✓ Pass

Large Text (above 18pt) WCAG AAA ✓ Pass

Any Text WCAG AAA × Fail

If you want to check with other color combinations, try the [Color Contrast Checker](#).

Hex AC8A66 Background



This preview shows how black text looks on a background with the Hex color AC8A66.



This preview shows how white text looks on a background with the Hex color AC8A66.

Color Blindness Simulation

Color vision deficiency is a very complex topic, and I could not describe the different causes any better than Wikipedia does, so if you want to learn more, you should check out their [article about color blindness](#).

Dichromacy



Original Color
AC8A66

Protanopia
9B9069

Deuteranopia
AC8A66

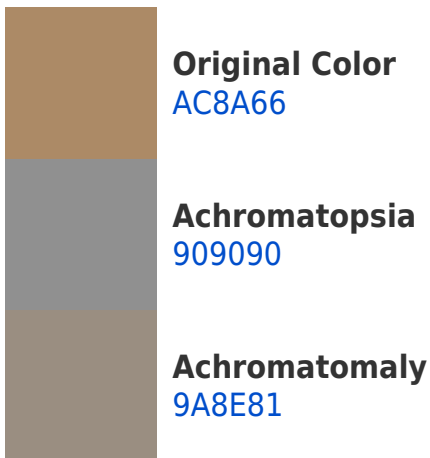


Tritanopia
B0858F

Trichromacy



Monochromacy



CSS Examples

Text

The CSS property to change the color of the text to Hex AC8A66 is called "color". The color property can be set on classes, ids or directly on the HTML element.

This example shows how text in the color #AC8A66 looks like.

```
.text, #text, p{  
    color:#AC8A66  
}
```

If you want to add a text shadow in that color use the text-shadow property, you can generate a text shadow directly with our [CSS Text Shadow Generator](#).

Here you see how black text with a 4 pixel #AC8A66 colored shadow looks like.

```
.shadow{ text-shadow: 4px 4px 2px #AC8A66  
}
```

Border

The CSS property to change the border of an element to Hex AC8A66 is called "border". The border property can be set on classes, ids or directly on the HTML element.

This example shows the color as border, it can be applied via the CSS property "border" or "border-color".

```
.border, #border, table{ border:4px solid  
#AC8A66 }
```

If only the border color should be changed use the property `border-color`.

```
.border{ border-color:#AC8A66 }
```

If you want to add a box shadow in that color use:

Here you see how a box with a 4 pixel #AC8A66 colored shadow looks like.

```
.boxshadow{ -moz-box-shadow:4px 4px 4px  
4px #AC8A66; -webkit-box-shadow:4px 4px  
4px 4px #AC8A66; box-shadow:4px 4px 4px  
4px #AC8A66 }
```

Background

The CSS property to change the background color of an element to Hex AC8A66 is called "background". The background property can be set on classes, ids or directly on the HTML element.

```
.background, #background, body{  
background:#AC8A66 }
```

If only the background color should be changed can be used:

```
.background{ background-color:#AC8A66 }
```

This example shows the color as background, it is applied via the CSS property "background".

To optimize and compress your CSS code, you can use our [online CSS compressor and optimizer](#) based on csstidy. If you want to create a linear or radial gradient as background or border, check our [CSS Gradient Generator](#).

Hey! You found this booklet interesting? Support Converting Colors with the new Membership Option!

The pro membership hides all ads, plus gives you double the colors in the color bucket, and more awesome pro features!

[Learn more, Memberships starting at \\$2.50/m!](#)

**Follow me
on Twitter!**

@ConvertingColor