

Converting Colors

Hex(AC8C6D)

Have a look what the booklet for
Hex(AC8C6D) contains.

Hex(AC8C6D)	3
<i>Conversions</i>	4
<i>Details</i>	6
<i>Harmonies</i>	11
<i>Previews</i>	23
<i>Color Blindness Simulation</i>	26
<i>CSS Examples</i>	29

Color

Hex(AC8C6D)

Conversions

Conversions Part 1

Format	Color
Hex	AC8C6D
RGB	172, 140, 109
RGB Percent	67%, 55%, 43%
CMY	0.3255, 0.4510, 0.5725
CMYK	0.00, 0.19, 0.37, 0.33
HSL	30°, 28%, 55%
HSV	30°, 37%, 67%
XYZ	29.1517, 28.6309, 18.4579
YIQ	146.0340, 29.0230, -2.8570

Conversions

Conversions Part 2

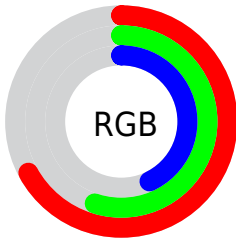
Format	Color
R_{YB}	172, 170, 109
Decimal	11308141
CIE Lab	60.45, 7.65, 21.13
CIE LCh	60, 22.471, 70.103
Yxy	28.6309, 0.3824, 0.3755
Android (android.graphics.Color)	4289498221 (0xFFAC8C6D)
YUV	146.0340, -18.2578, 22.7722
Hunter-Lab	53.5079, 3.6098, 17.0031

Details

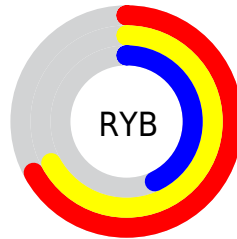
The Hex color **AC8C6D** is a dark color, and the websafe version is hex **CC9966**. A complement of this color would be **6D8DAC**, and the grayscale version is **929292**.

A 20% lighter version of the original color is **E4C2A1**, and **765A3D** is the 20% darker color. If you saturate the color by 10%, you get **AC835C**, and if you desaturate by 10%, it is **AC957E**.

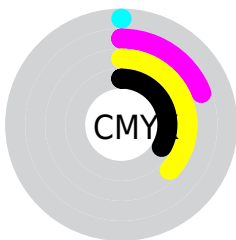
Distribution



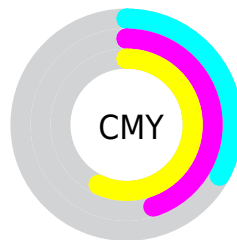
- Red (67%)
- Green (55%)
- Blue (43%)



- Red (67%)
- Yellow (67%)
- Blue (43%)



- Cyan (0%)
- Magenta (19%)
- Yellow (37%)
- Black (33%)



- Cyan (33%)
- Magenta (45%)
- Yellow (57%)

Brightness & Saturation Gradients

These gradients show how the Hex color AC8C6D changes by changing the brightness by 10 percent. The first figure shows a shift by +10% for each color and the second figure -10%.

Similar to the brightness gradients but the following saturation gradients show a change of the Hex color AC8C6D by changing the saturation by 10% instead.

 AC8C6D

 AC8C6D

FFFFFF

 917355

 E4C2A1

 765A3D

 FFDDBC

 5D4327

 FFFAD8

 442C12

 FFFFF4

 2D1800

 140000

 000000

 AC8C6D

 AC8C6D

 AC835C

 AC957E

 AC7B4B

 AC9D8F

 AC7239

 ACA6A1

 AC6928

 ACAFB2

 AC6017

 ACB8C3

 AC5806

 ACC0D4

 AC5500

 ACC9E5

 ACD2F7

 ACDBFF

Harmonies

Analogous

The Analogous color harmony consists of three colors that are next to each other on the color wheel.



B88679



AC8C6D



9A936B

Triad

The Triadic color harmony groups three colors that are evenly spaced from another and form a triangle on the color wheel.



AC8C6D



5C9D98



9D8AB0

Complementary

The Complementary color scheme is a pair of colors which are on the opposite of each other on the color wheel.



AC8C6D



6D8DAC

Split Complementary

Split-complementary colors differ from the complementary color scheme. The scheme consists of three colors, the original color and two neighbors of the complement color.



8391B8



AC8C6D



589CAB

Square

The Square scheme is like the rectangle color scheme, but the four colors are evenly spaced on the color wheel.



AC8C6D



6D9C84



6897B6



B185A0

Rectangle

The Rectangle color scheme consists of four colors that form a rectangle on the color wheel.



AC8C6D



8B976F



6897B6



958DB4

Sweetspot

The Sweet Spot groups the original color and five complimentary colors.



AC8C6D



E0D4C8



AC6D8E



706962



F0F0F0



707070

Same Dimension

The Same Dimension uses a secret algorithm to generate beautiful new colors.



AC8C6D



E0AE7E



ACAB6D



57524E



964A00



170B00

Inverse Universe

The Inverse Universe completely reimagines the original color for something new.



6D8DAC



7EB0E0



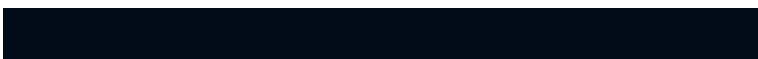
6D6EAC



4E5257



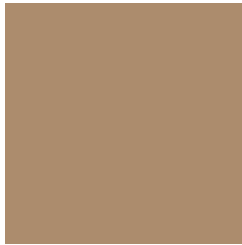
004C96



000C17

Previews

White Background



This preview shows how the Hex color AC8C6D looks on a white background.

Color Contrast Check

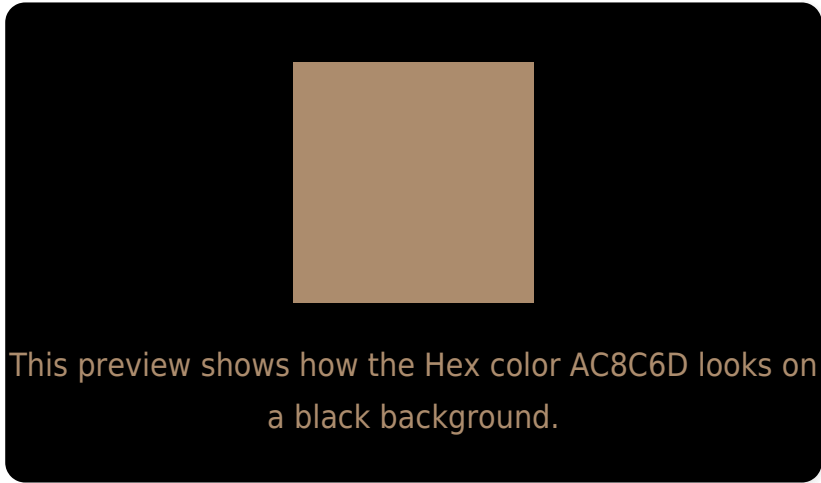
Large Text (above 18pt) WCAG AA ✓ Pass

Any Text WCAG AA × Fail

Large Text (above 18pt) WCAG AAA × Fail

Any Text WCAG AAA × Fail

Black Background



Color Contrast Check

Large Text (above 18pt) WCAG AA ✓ Pass

Any Text WCAG AA ✓ Pass

Large Text (above 18pt) WCAG AAA ✓ Pass

Any Text WCAG AAA × Fail

If you want to check with other color combinations, try the [Color Contrast Checker](#).

Hex AC8C6D Background



This preview shows how black text looks on a background with the Hex color AC8C6D.



This preview shows how white text looks on a background with the Hex color AC8C6D.

Color Blindness Simulation

Color vision deficiency is a very complex topic, and I could not describe the different causes any better than Wikipedia does, so if you want to learn more, you should check out their [article about color blindness](#).

Dichromacy





Tritanopia
B08791

Trichromacy



Original Color
AC8C6D

Protanomaly
A2906F

Deuteranomaly
AC8C6D

Tritanomaly
AF8984

Monochromacy



Original Color
AC8C6D

Achromatopsia
929292

Achromatomaly
9B9085

CSS Examples

Text

The CSS property to change the color of the text to Hex AC8C6D is called "color". The color property can be set on classes, ids or directly on the HTML element.

This example shows how text in the color #AC8C6D looks like.

```
.text, #text, p{  
    color:#AC8C6D  
}
```

If you want to add a text shadow in that color use the text-shadow property, you can generate a text shadow directly with our [CSS Text Shadow Generator](#).

Here you see how black text with a 4 pixel #AC8C6D colored shadow looks like.

```
.shadow{ text-shadow: 4px 4px 2px #AC8C6D
}
```

Border

The CSS property to change the border of an element to Hex AC8C6D is called "border". The border property can be set on classes, ids or directly on the HTML element.

This example shows the color as border, it can be applied via the CSS property "border" or "border-color".

```
.border, #border, table{ border:4px solid
#AC8C6D }
```

If only the border color should be changed use the property `border-color`.

```
.border{ border-color:#AC8C6D }
```

If you want to add a box shadow in that color use:

Here you see how a box with a 4 pixel #AC8C6D colored shadow looks like.

```
.boxshadow{ -moz-box-shadow:4px 4px 4px  
4px #AC8C6D; -webkit-box-shadow:4px 4px  
4px 4px #AC8C6D; box-shadow:4px 4px 4px  
4px #AC8C6D }
```

Background

The CSS property to change the background color of an element to Hex AC8C6D is called "background". The background property can be set on classes, ids or directly on the HTML element.

```
.background, #background, body{  
background:#AC8C6D }
```

If only the background color should be changed can be used:

```
.background{ background-color:#AC8C6D }
```

This example shows the color as background, it is applied via the CSS property "background".

To optimize and compress your CSS code, you can use our [online CSS compressor and optimizer](#) based on csstidy. If you want to create a linear or radial gradient as background or border, check our [CSS Gradient Generator](#).

Hey! You found this booklet interesting? Support Converting Colors with the new Membership Option!

The pro membership hides all ads, plus gives you double the colors in the color bucket, and more awesome pro features!

[Learn more, Memberships starting at \\$2.50/m!](#)

**Follow me
on Twitter!**

@ConvertingColor