

Converting Colors

Hex(AC927C)

Have a look what the booklet for
Hex(AC927C) contains.

Hex(AC927C)	3
<i>Conversions</i>	4
<i>Details</i>	6
<i>Harmonies</i>	11
<i>Previews</i>	23
<i>Color Blindness Simulation</i>	26
<i>CSS Examples</i>	29

Color

Hex(AC927C)

Conversions

Conversions Part 1

Format	Color
Hex	AC927C
RGB	172, 146, 124
RGB Percent	67%, 57%, 49%
CMY	0.3255, 0.4275, 0.5137
CMYK	0.00, 0.15, 0.28, 0.33
HSL	27°, 22%, 58%
HSV	27°, 28%, 67%
XYZ	30.9302, 30.7837, 23.3804
YIQ	151.2660, 22.5580, -1.3300

Conversions

Conversions Part 2

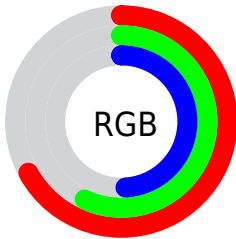
Format	Color
RYB	172, 165, 124
Decimal	11309692
CIELab	62.32, 6.31, 15.28
CIElCh	62, 16.530, 67.561
Yxy	30.7837, 0.3635, 0.3618
Android (android.graphics.Color)	4289499772 (0xFFAC927C)
YUV	151.2660, -13.4421, 18.1837
Hunter-Lab	55.4830, 2.4135, 13.8534

Details

The Hex color **AC927C** is a dark color, and the websafe version is hex **CC9999**. A complement of this color would be **7C96AC**, and the grayscale version is **979797**.

A 20% lighter version of the original color is **E4C8B1**, and **77604B** is the 20% darker color. If you saturate the color by 10%, you get **AC896B**, and if you desaturate by 10%, it is **AC9B8D**.

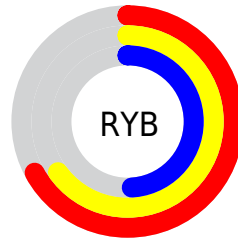
Distribution



Red (67%)

Green (57%)

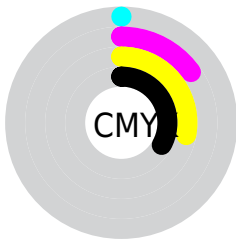
Blue (49%)



Red (67%)

Yellow (65%)

Blue (49%)

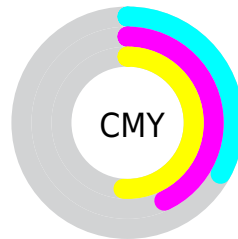


Cyan (0%)

Magenta (15%)

Yellow (28%)

Black (33%)



Cyan (33%)

Magenta (43%)

Yellow (51%)

Brightness & Saturation Gradients

These gradients show how the Hex color AC927C changes by changing the brightness by 10 percent. The first figure shows a shift by +10% for each color and the second figure -10%.

Similar to the brightness gradients but the following saturation gradients show a change of the Hex color AC927C by changing the saturation by 10% instead.

 AC927C

 AC927C

FFFFFF

 917863

 E4C8B1

 77604B

 FFE4CC

 5E4834

 FFFFE8

 45311F

 2E1C08

 180300

 000000

 AC927C

 AC927C

 AC896B

 AC9B8D

 AC7F5A

 ACA59E

 AC7648

 ACAEB0

 AC6D37

 ACB7C1

 AC6326

 ACC1D2

 AC5A15

 ACCAE3

 AC5104

 ACD3F4

 AC4F00

 ACDDFF

 ACE6FF

Harmonies

Analogous

The Analogous color harmony consists of three colors that are next to each other on the color wheel.



B48E85



AC927C



9E977A

Triad

The Triadic color harmony groups three colors that are evenly spaced from another and form a triangle on the color wheel.



AC927C



729F9A



9E92AE

Complementary

The Complementary color scheme is a pair of colors which are on the opposite of each other on the color wheel.



AC927C



7C96AC

Split Complementary

Split-complementary colors differ from the complementary color scheme. The scheme consists of three colors, the original color and two neighbors of the complement color.



8B97B3



AC927C



709EA8

Square

The Square scheme is like the rectangle color scheme, but the four colors are evenly spaced on the color wheel.



AC927C



7E9E8B



799BB1



AD8EA2

Rectangle

The Rectangle color scheme consists of four colors that form a rectangle on the color wheel.



AC927C



939A7D



799BB1



9893B1

Sweetspot

The Sweet Spot groups the original color and five complimentary colors.



AC927C



E0D7CE



AC7C96



706A65



F0F0F0



707070

Same Dimension

The Same Dimension uses a secret algorithm to generate beautiful new colors.



AC927C



E0B896



ACAA7C



57524E



964500



170B00

Inverse Universe

The Inverse Universe completely reimagines the original color for something new.



7C96AC



96BEE0



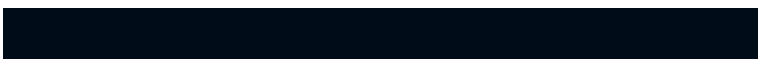
7C7EAC



4E5357



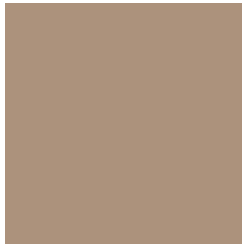
005196



000C17

Previews

White Background



This preview shows how the Hex color AC927C looks on a white background.

Color Contrast Check

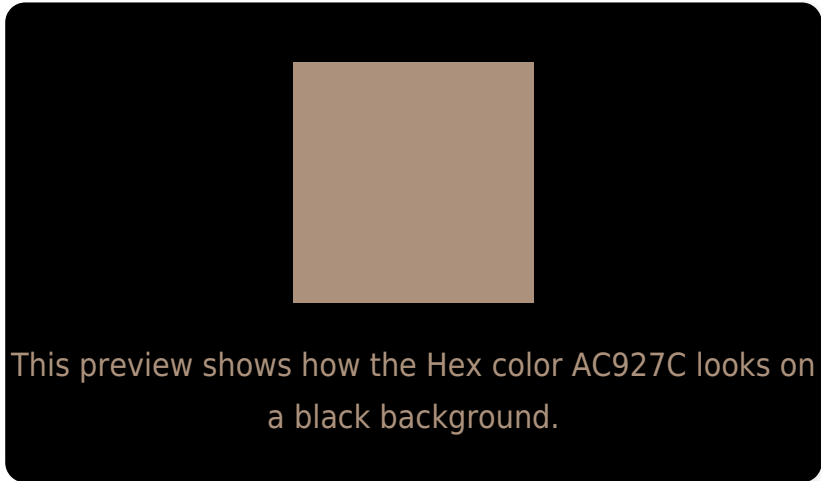
Large Text (above 18pt) WCAG AA × Fail

Any Text WCAG AA × Fail

Large Text (above 18pt) WCAG AAA × Fail

Any Text WCAG AAA × Fail

Black Background



Color Contrast Check

Large Text (above 18pt) WCAG AA ✓ Pass

Any Text WCAG AA ✓ Pass

Large Text (above 18pt) WCAG AAA ✓ Pass

Any Text WCAG AAA ✓ Pass

If you want to check with other color combinations, try the [Color Contrast Checker](#).

Hex AC927C Background



This preview shows how black text looks on a background with the Hex color AC927C.



This preview shows how white text looks on a background with the Hex color AC927C.

Color Blindness Simulation

Color vision deficiency is a very complex topic, and I could not describe the different causes any better than Wikipedia does, so if you want to learn more, you should check out their [article about color blindness](#).

Dichromacy



Original Color
AC927C

Protanopia
9F967E

Deuteranopia
AF917C



Tritanopia
AF8E99

Trichromacy



Original Color
AC927C

Protanomaly
A4957D

Deuteranomaly
AE917C

Tritanomaly
AE8F8E

Monochromacy



Original Color
AC927C

Achromatopsia
979797

Achromatomaly
9F958D

CSS Examples

Text

The CSS property to change the color of the text to Hex AC927C is called "color". The color property can be set on classes, ids or directly on the HTML element.

This example shows how text in the color #AC927C looks like.

```
.text, #text, p{  
    color:#AC927C  
}
```

If you want to add a text shadow in that color use the text-shadow property, you can generate a text shadow directly with our [CSS Text Shadow Generator](#).

Here you see how black text with a 4 pixel #AC927C colored shadow looks like.

```
.shadow{ text-shadow: 4px 4px 2px #AC927C
}
```

Border

The CSS property to change the border of an element to Hex AC927C is called "border". The border property can be set on classes, ids or directly on the HTML element.

This example shows the color as border, it can be applied via the CSS property "border" or "border-color".

```
.border, #border, table{ border:4px solid
#AC927C }
```

If only the border color should be changed use the property `border-color`.

```
.border{ border-color:#AC927C }
```

If you want to add a box shadow in that color use:

Here you see how a box with a 4 pixel #AC927C colored shadow looks like.

```
.boxshadow{ -moz-box-shadow:4px 4px 4px  
4px #AC927C; -webkit-box-shadow:4px 4px  
4px 4px #AC927C; box-shadow:4px 4px 4px  
4px #AC927C }
```

Background

The CSS property to change the background color of an element to Hex AC927C is called "background". The background property can be set on classes, ids or directly on the HTML element.

```
.background, #background, body{  
background:#AC927C }
```

If only the background color should be changed can be used:

```
.background{ background-color:#AC927C }
```

This example shows the color as background, it is applied via the CSS property "background".

To optimize and compress your CSS code, you can use our [online CSS compressor and optimizer](#) based on csstidy. If you want to create a linear or radial gradient as background or border, check our [CSS Gradient Generator](#).

Hey! You found this booklet interesting? Support Converting Colors with the new Membership Option!

The pro membership hides all ads, plus gives you double the colors in the color bucket, and more awesome pro features!

[Learn more, Memberships starting at \\$2.50/m!](#)

**Follow me
on Twitter!**

@ConvertingColor