

# Converting Colors

Hex(AC9399)

Have a look what the booklet for  
Hex(AC9399) contains.

<b>Hex(AC9399)</b> .....	3
<b><i>Conversions</i></b> .....	4
<b><i>Details</i></b> .....	6
<b><i>Harmonies</i></b> .....	11
<b><i>Previews</i></b> .....	23
<b><i>Color Blindness Simulation</i></b> .....	26
<b><i>CSS Examples</i></b> .....	29

# **Color**

**Hex(AC9399)**

# Conversions

## Conversions Part 1

<b>Format</b>	<b>Color</b>
Hex	AC9399
RGB	172, 147, 153
RGB Percent	67%, 58%, 60%
CMY	0.3255, 0.4235, 0.4000
CMYK	0.00, 0.15, 0.11, 0.33
HSL	346°, 13%, 63%
HSV	346°, 15%, 67%
XYZ	33.1967, 31.9380, 34.5520
YIQ	155.1590, 12.9740, 7.1660

# Conversions

## Conversions Part 2

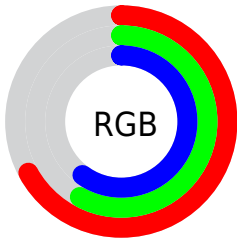
<b>Format</b>	<b>Color</b>
<b>RYB</b>	172, 147, 153
Decimal	11309977
CIELab	63.29, 10.34, 0.29
CIElCh	63, 10.349, 1.622
Yxy	31.9380, 0.3330, 0.3204
Android (android.graphics.Color)	4289500057 (0xFFAC9399)
YUV	155.1590, -1.0644, 14.7696
Hunter-Lab	56.5137, 5.9538, 3.3102

# Details

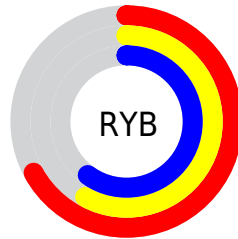
The Hex color **AC9399** is a light color, and the websafe version is hex **999999**. A complement of this color would be **93ACA6**, and the grayscale version is **9B9B9B**.

A 20% lighter version of the original color is **E4C9CF**, and **786066** is the 20% darker color. If you saturate the color by 10%, you get **AC828C**, and if you desaturate by 10%, it is **ACA4A6**.

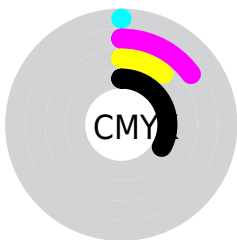
# Distribution



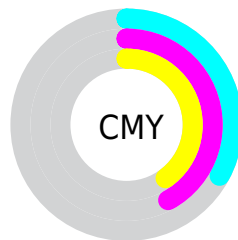
- Red (67%)
- Green (58%)
- Blue (60%)



- Red (67%)
- Yellow (58%)
- Blue (60%)



- Cyan (0%)
- Magenta (15%)
- Yellow (11%)
- Black (33%)



- Cyan (33%)
- Magenta (42%)
- Yellow (40%)

# Brightness & Saturation Gradients

These gradients show how the Hex color AC9399 changes by changing the brightness by 10 percent. The first figure shows a shift by +10% for each color and the second figure -10%.

Similar to the brightness gradients but the following saturation gradients show a change of the Hex color AC9399 by changing the saturation by 10% instead.



 AC9399

 AC9399

FFFFFF

 91797F

 E4C9CF

 786066

 FFE5EB

 5F494E

 473237

 301D22

 1C040C

 000000

 AC9399

 AC9399

 AC828C

 ACA4A6

■ AC717F

■ ACB5B3

■ AC5F72

■ ACC7C0

■ AC4E65

■ ACD8CD

■ AC3D58

■ ACE9DA

■ AC2C4B

■ ACFAE7

■ AC1B3D

■ ACFFF5

■ AC0930

■ ACFFFF

■ AC0029

# Harmonies

## Analogous

The Analogous color harmony consists of three colors that are next to each other on the color wheel.



A694A2



AC9399



AD9490

# Triad

The Triadic color harmony groups three colors that are evenly spaced from another and form a triangle on the color wheel.



AC9399



969C89



879DA9

# Complementary

The Complementary color scheme is a pair of colors which are on the opposite of each other on the color wheel.



AC9399



93ACA6

# Split Complementary

Split-complementary colors differ from the complementary color scheme. The scheme consists of three colors, the original color and two neighbors of the complement color.



829EA2



AC9399



8C9E90

# Square

The Square scheme is like the rectangle color scheme, but the four colors are evenly spaced on the color wheel.



AC9399



A09987



849F99



909AAB

# Rectangle

The Rectangle color scheme consists of four colors that form a rectangle on the color wheel.



AC9399



AB958B



849F99



849DA7



# Sweetspot

The Sweet Spot groups the original color and five complimentary colors.



AC9399



E0D7DA



A693AC



706B6C



F0F0F0



707070



# Same Dimension

The Same Dimension uses a secret algorithm to generate beautiful new colors.



AC9399



E0BAC3



AC9993



574E50



960024



170006



# Inverse Universe

The Inverse Universe completely reimagines the original color for something new.



AC9399



E0BAC3



93A6AC



574E50



960024

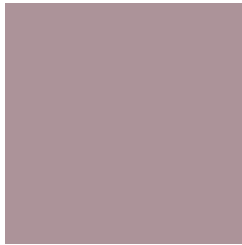


170006



# Previews

## White Background



This preview shows how the Hex color AC9399 looks on a white background.

## Color Contrast Check

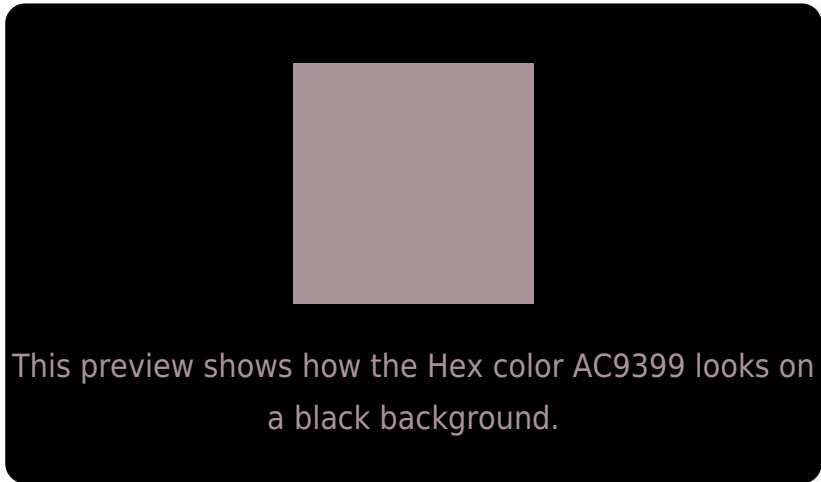
Large Text (above 18pt) WCAG AA × Fail

Any Text WCAG AA × Fail

Large Text (above 18pt) WCAG AAA × Fail

Any Text WCAG AAA × Fail

# Black Background



## Color Contrast Check

Large Text (above 18pt) WCAG AA ✓ Pass

Any Text WCAG AA ✓ Pass

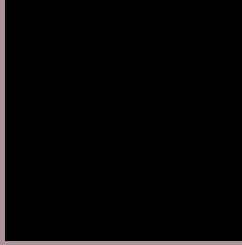
Large Text (above 18pt) WCAG AAA ✓ Pass

Any Text WCAG AAA ✓ Pass

If you want to check with other color combinations, try the [Color Contrast Checker](#).



## Hex AC9399 Background



This preview shows how black text looks on a background with the Hex color AC9399.



This preview shows how white text looks on a background with the Hex color AC9399.

# Color Blindness Simulation

Color vision deficiency is a very complex topic, and I could not describe the different causes any better than Wikipedia does, so if you want to learn more, you should check out their [article about color blindness](#).

## Dichromacy



**Original Color**  
AC9399

**Protanopia**  
9B999C

**Deuteranopia**  
A89499



**Tritanopia**  
AD929E

# Trichromacy



**Original Color**  
AC9399

**Protanomaly**  
A1979B

**Deuteranomaly**  
A99499

**Tritanomaly**  
AD929C

# Monochromacy



**Original Color**  
AC9399

**Achromatopsia**  
9B9B9B

**Achromatomaly**  
A1989A

# CSS Examples

## Text

The CSS property to change the color of the text to Hex AC9399 is called "color". The color property can be set on classes, ids or directly on the HTML element.

This example shows how text in the color #AC9399 looks like.

```
.text, #text, p{  
    color:#AC9399  
}
```

If you want to add a text shadow in that color use the text-shadow property, you can generate a text shadow directly with our [CSS Text Shadow Generator](#).

Here you see how black text with a 4 pixel #AC9399 colored shadow looks like.

```
.shadow{ text-shadow: 4px 4px 2px #AC9399
}
```

## Border

The CSS property to change the border of an element to Hex AC9399 is called "border". The border property can be set on classes, ids or directly on the HTML element.

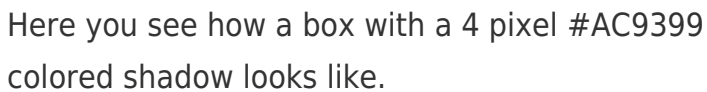
This example shows the color as border, it can be applied via the CSS property "border" or "border-color".

```
.border, #border, table{ border:4px solid
#AC9399 }
```

If only the border color should be changed use the property `border-color`.

```
.border{ border-color:#AC9399 }
```

If you want to add a box shadow in that color use:



Here you see how a box with a 4 pixel `#AC9399` colored shadow looks like.

```
.boxshadow{ -moz-box-shadow:4px 4px 4px  
4px #AC9399; -webkit-box-shadow:4px 4px  
4px 4px #AC9399; box-shadow:4px 4px 4px  
4px #AC9399 }
```

# Background

The CSS property to change the background color of an element to Hex AC9399 is called "background". The background property can be set on classes, ids or directly on the HTML element.

```
.background, #background, body{  
background:#AC9399 }
```

If only the background color should be changed can be used:

```
.background{ background-color:#AC9399 }
```

This example shows the color as background, it is applied via the CSS property "background".

To optimize and compress your CSS code, you can use our [online CSS compressor and optimizer](#) based on csstidy. If you want to create a linear or radial gradient as background or border, check our [CSS Gradient Generator](#).



Hey! You found this booklet interesting? Support Converting Colors with the new Membership Option!

The pro membership hides all ads, plus gives you double the colors in the color bucket, and more awesome pro features!

**[Learn more, Memberships starting at \\$2.50/m!](#)**

**Follow me  
on Twitter!**

@ConvertingColor