

# Converting Colors

Hex(AC9AA5)

Have a look what the booklet for  
Hex(AC9AA5) contains.

|  |    |
|--|----|
| <b>Hex(AC9AA5)</b> .....                       | 3  |
| <i><b>Conversions</b></i> .....                | 4  |
| <i><b>Details</b></i> .....                    | 6  |
| <i><b>Harmonies</b></i> .....                  | 11 |
| <i><b>Previews</b></i> .....                   | 23 |
| <i><b>Color Blindness Simulation</b></i> ..... | 26 |
| <i><b>CSS Examples</b></i> .....               | 29 |

# **Color**

**Hex(AC9AA5)**

# Conversions

## Conversions Part 1

| <b>Format</b> | <b>Color</b>              |
|---------------|---------------------------|
| Hex           | AC9AA5                    |
| RGB           | 172, 154, 165             |
| RGB Percent   | 67%, 60%, 65%             |
| CMY           | 0.3255, 0.3961, 0.3529    |
| CMYK          | 0.00, 0.10, 0.04, 0.33    |
| HSL           | 323°, 10%, 64%            |
| HSV           | 323°, 10%, 67%            |
| XYZ           | 35.3604, 34.5985, 40.4118 |
| YIQ           | 160.6360, 7.1970, 7.2370  |

# Conversions

## Conversions Part 2

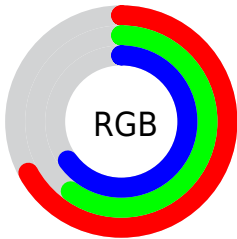
| Format                              | Color  |
|-------------------------------------|--|
| <a href="#">RYB</a>                 | <a href="#">172, 154, 165</a>                                |
| Decimal                             | <a href="#">11311781</a>                                     |
| CIELab                              | <a href="#">65.43, 8.60, -3.32</a>                           |
| CIELCh                              | <a href="#">65, 9.216, 338.855</a>                           |
| Yxy                                 | <a href="#">34.5985, 0.3204, 0.3135</a>                      |
| Android<br>(android.graphics.Color) | <a href="#">4289501861</a><br>( <a href="#">0xFFAC9AA5</a> ) |
| YUV                                 | <a href="#">160.6360, 2.1515, 9.9662</a>                     |
| Hunter-Lab                          | <a href="#">58.8205, 4.3709, 0.4399</a>                      |

# Details

The Hex color **AC9AA5** is a light color, and the websafe version is hex **999999**. A complement of this color would be **9AACA1**, and the grayscale version is **A1A1A1**.

A 20% lighter version of the original color is **E3D0DC**, and **786771** is the 20% darker color. If you saturate the color by 10%, you get **AC899E**, and if you desaturate by 10%, it is **ACABAC**.

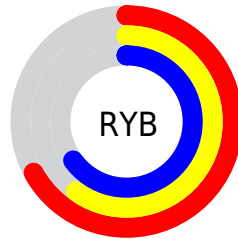
# Distribution



Red (67%)

Green (60%)

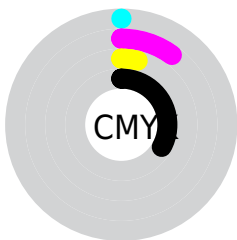
Blue (65%)



Red (67%)

Yellow (60%)

Blue (65%)

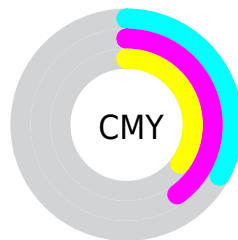


Cyan (0%)

Magenta (10%)

Yellow (4%)

Black (33%)



Cyan (33%)

Magenta (40%)

Yellow (35%)

# Brightness & Saturation Gradients

These gradients show how the Hex color AC9AA5 changes by changing the brightness by 10 percent. The first figure shows a shift by +10% for each color and the second figure -10%.

Similar to the brightness gradients but the following saturation gradients show a change of the Hex color AC9AA5 by changing the saturation by 10% instead.



■ AC9AA5

■ AC9AA5

FFFFFF

■ 91808B

■ E3D0DC

■ 786771

■ FFEDF8

■ 5F4F59

■ 473841

■ 31222B

■ 1C0D17

■ 000000

■ AC9AA5

■ AC9AA5

■ AC899E

■ ACABAC

 AC7898

 ACBCB2

 AC6691

 ACCEB9

 AC558A

 ACDFC0

 AC4484

 ACF0C6

 AC337D

 ACFFCD

 AC2276

 ACFFD4

 AC106F

 ACFFDB

 AC0069

 ACFFE1

# Harmonies

## Analogous

The Analogous color harmony consists of three colors that are next to each other on the color wheel.



A49CAC



AC9AA5



B0999D

# Triad

The Triadic color harmony groups three colors that are evenly spaced from another and form a triangle on the color wheel.



AC9AA5



A39F8F



8BA3A9

# Complementary

The Complementary color scheme is a pair of colors which are on the opposite of each other on the color wheel.



AC9AA5



9AACA1

# Split Complementary

Split-complementary colors differ from the complementary color scheme. The scheme consists of three colors, the original color and two neighbors of the complement color.



8BA4A1



AC9AA5



9AA292

# Square

The Square scheme is like the rectangle color scheme, but the four colors are evenly spaced on the color wheel.



AC9AA5



AB9C90



91A399



90A1AE

# Rectangle

The Rectangle color scheme consists of four colors that form a rectangle on the color wheel.



AC9AA5



B19A97



91A399



8AA4A6



# Sweetspot

The Sweet Spot groups the original color and five complimentary colors.



AC9AA5



E0DADE



A19AAC



706C6E



F0F0F0



707070



# Same Dimension

The Same Dimension uses a secret algorithm to generate beautiful new colors.



AC9AA5



E0C3D5



AC9A9C



574E53



96005C



17000E



# Inverse Universe

The Inverse Universe completely reimagines the original color for something new.



AC9AA5



E0C3D5



9AACAA



574E53



96005C

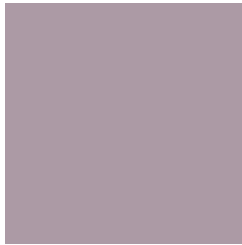


17000E



# Previews

## White Background



This preview shows how the Hex color AC9AA5 looks on a white background.

## Color Contrast Check

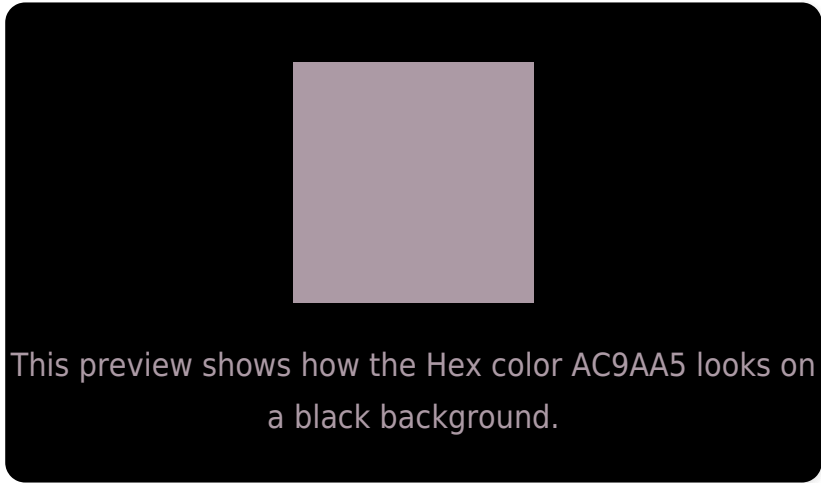
Large Text (above 18pt) WCAG AA × Fail

Any Text WCAG AA × Fail

Large Text (above 18pt) WCAG AAA × Fail

Any Text WCAG AAA × Fail

# Black Background



## Color Contrast Check

Large Text (above 18pt) WCAG AA ✓ Pass

Any Text WCAG AA ✓ Pass

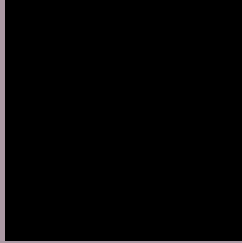
Large Text (above 18pt) WCAG AAA ✓ Pass

Any Text WCAG AAA ✓ Pass

If you want to check with other color combinations, try the [Color Contrast Checker](#).



## Hex AC9AA5 Background



This preview shows how black text looks on a background with the Hex color AC9AA5.



This preview shows how white text looks on a background with the Hex color AC9AA5.

# Color Blindness Simulation

Color vision deficiency is a very complex topic, and I could not describe the different causes any better than Wikipedia does, so if you want to learn more, you should check out their [article about color blindness](#).

## Dichromacy



**Original Color**  
AC9AA5

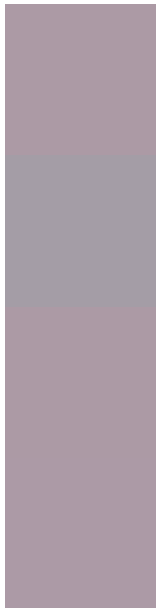
**Protanopia**  
9F9EA7

**Deuteranopia**  
AC9AA5



**Tritanopia**  
AC9AA6

# Trichromacy



**Original Color**

AC9AA5

**Protanomaly**

A49DA6

**Deuteranomaly**

AC9AA5

**Tritanomaly**

AC9AA6

# Monochromacy



**Original Color**

AC9AA5

**Achromatopsia**

A1A1A1

**Achromatomaly**

A59EA2

# CSS Examples

## Text

The CSS property to change the color of the text to Hex AC9AA5 is called "color". The color property can be set on classes, ids or directly on the HTML element.

This example shows how text in the color #AC9AA5 looks like.

```
.text, #text, p{  
    color:#AC9AA5  
}
```

If you want to add a text shadow in that color use the text-shadow property, you can generate a text shadow directly with our [CSS Text Shadow Generator](#).

Here you see how black text with a 4 pixel #AC9AA5 colored shadow looks like.

```
.shadow{ text-shadow: 4px 4px 2px #AC9AA5  
}
```

## Border

The CSS property to change the border of an element to Hex AC9AA5 is called "border". The border property can be set on classes, ids or directly on the HTML element.

This example shows the color as border, it can be applied via the CSS property "border" or "border-color".

```
.border, #border, table{ border:4px solid  
#AC9AA5 }
```

If only the border color should be changed use the property `border-color`.

```
.border{ border-color:#AC9AA5 }
```

If you want to add a box shadow in that color use:

Here you see how a box with a 4 pixel #AC9AA5 colored shadow looks like.

```
.boxshadow{ -moz-box-shadow:4px 4px 4px  
4px #AC9AA5; -webkit-box-shadow:4px 4px  
4px 4px #AC9AA5; box-shadow:4px 4px 4px  
4px #AC9AA5 }
```

# Background

The CSS property to change the background color of an element to Hex AC9AA5 is called "background". The background property can be set on classes, ids or directly on the HTML element.

```
.background, #background, body{  
background:#AC9AA5 }
```

If only the background color should be changed can be used:

```
.background{ background-color:#AC9AA5 }
```

This example shows the color as background, it is applied via the CSS property "background".

To optimize and compress your CSS code, you can use our [online CSS compressor and optimizer](#) based on csstidy. If you want to create a linear or radial gradient as background or border, check our [CSS Gradient Generator](#).



Hey! You found this booklet interesting? Support Converting Colors with the new Membership Option!

The pro membership hides all ads, plus gives you double the colors in the color bucket, and more awesome pro features!

**[Learn more, Memberships starting at \\$2.50/m!](#)**

**Follow me  
on Twitter!**

@ConvertingColor