

Converting Colors

Hex(AC9BA1)

Have a look what the booklet for
Hex(AC9BA1) contains.

Hex(AC9BA1)	3
<i>Conversions</i>	4
<i>Details</i>	6
<i>Harmonies</i>	11
<i>Previews</i>	23
<i>Color Blindness Simulation</i>	26
<i>CSS Examples</i>	29

Color

Hex(AC9BA1)

Conversions

Conversions Part 1

Format	Color
Hex	AC9BA1
RGB	172, 155, 161
RGB Percent	67%, 61%, 63%
CMY	0.3255, 0.3922, 0.3686
CMYK	0.00, 0.10, 0.06, 0.33
HSL	339°, 9%, 64%
HSV	339°, 10%, 67%
XYZ	35.1676, 34.7866, 38.5792
YIQ	160.7670, 8.2060, 5.4700

Conversions

Conversions Part 2

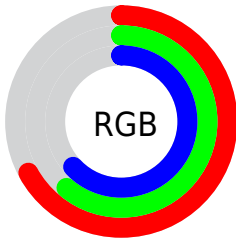
Format	Color
RYB	172, 155, 161
Decimal	11312033
CIELab	65.58, 7.31, -0.86
CIELCh	66, 7.357, 353.254
Yxy	34.7866, 0.3240, 0.3205
Android (android.graphics.Color)	4289502113 (0xFFAC9BA1)
YUV	160.7670, 0.1149, 9.8513
Hunter-Lab	58.9801, 3.2176, 2.5042

Details

The Hex color **AC9BA1** is a light color, and the websafe version is hex **999999**. A complement of this color would be **9BACA6**, and the grayscale version is **A1A1A1**.

A 20% lighter version of the original color is **E3D1D8**, and **78686E** is the 20% darker color. If you saturate the color by 10%, you get **AC8A96**, and if you desaturate by 10%, it is **ACACAC**.

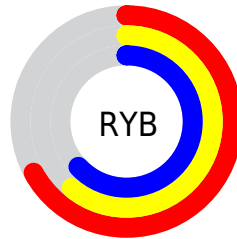
Distribution



Red (67%)

Green (61%)

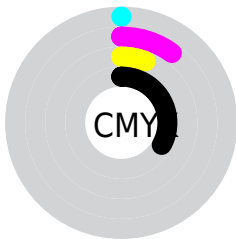
Blue (63%)



Red (67%)

Yellow (61%)

Blue (63%)

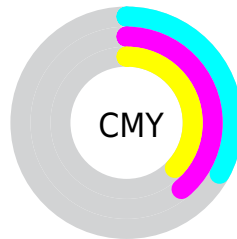


Cyan (0%)

Magenta (10%)

Yellow (6%)

Black (33%)



Cyan (33%)

Magenta (39%)

Yellow (37%)

Brightness & Saturation Gradients

These gradients show how the Hex color AC9BA1 changes by changing the brightness by 10 percent. The first figure shows a shift by +10% for each color and the second figure -10%.

Similar to the brightness gradients but the following saturation gradients show a change of the Hex color AC9BA1 by changing the saturation by 10% instead.

■ AC9BA1

■ AC9BA1

FFFFFF

■ 918187

■ E3D1D8

■ 78686E

■ FFEEF4

■ 5F5055

■ 47393E

■ 312328

■ 1C0E14

■ 000000

■ AC9BA1

■ AC9BA1

■ AC8A96

■ ACACAC

 AC798B

 ACBDB7

 AC6780

 ACCFC2

 AC5674

 ACE0CE

 AC4569

 ACF1D9

 AC345E

 ACFFE4

 AC2353

 ACFFEF

 AC1148

 ACFFFA

 AC003D

 ACFFFF

Harmonies

Analogous

The Analogous color harmony consists of three colors that are next to each other on the color wheel.



A79CA7



AC9BA1



AE9B9A

Triad

The Triadic color harmony groups three colors that are evenly spaced from another and form a triangle on the color wheel.



AC9BA1



9FA093



91A2AA

Complementary

The Complementary color scheme is a pair of colors which are on the opposite of each other on the color wheel.



AC9BA1



9BACA6

Split Complementary

Split-complementary colors differ from the complementary color scheme. The scheme consists of three colors, the original color and two neighbors of the complement color.



8FA3A4



AC9BA1



98A297

Square

The Square scheme is like the rectangle color scheme, but the four colors are evenly spaced on the color wheel.



AC9BA1



A69E92



92A39D



97A0AC

Rectangle

The Rectangle color scheme consists of four colors that form a rectangle on the color wheel.



AC9BA1



AD9C96



92A39D



90A3A8

Sweetspot

The Sweet Spot groups the original color and five complimentary colors.



AC9BA1



E0DADC



A69BAC



706C6D



F0F0F0



707070

Same Dimension

The Same Dimension uses a secret algorithm to generate beautiful new colors.



AC9BA1



E0C5CF



AC9D9B



574E51



960035



170008

Inverse Universe

The Inverse Universe completely reimagines the original color for something new.



AC9BA1



E0C5CF



9BAAAC



574E51



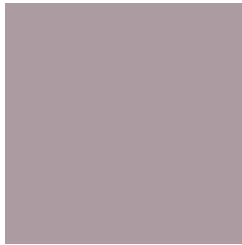
960035



170008

Previews

White Background



This preview shows how the Hex color AC9BA1 looks on a white background.

Color Contrast Check

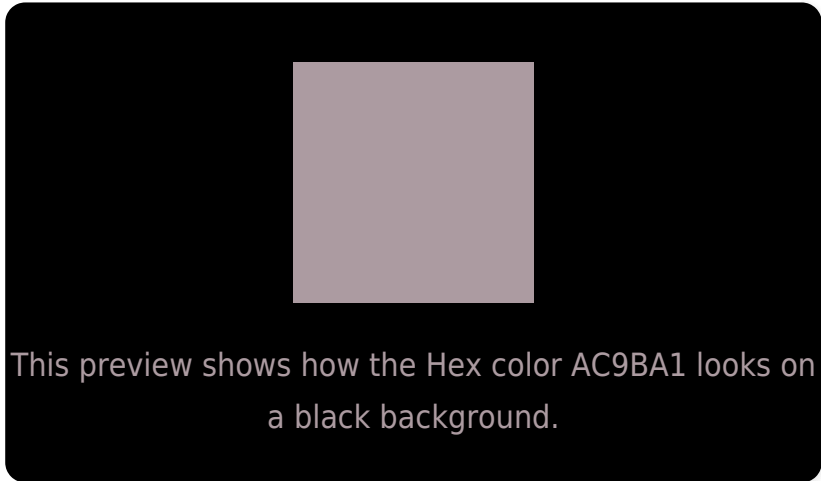
Large Text (above 18pt) WCAG AA × Fail

Any Text WCAG AA × Fail

Large Text (above 18pt) WCAG AAA × Fail

Any Text WCAG AAA × Fail

Black Background



Color Contrast Check

Large Text (above 18pt) WCAG AA ✓ Pass

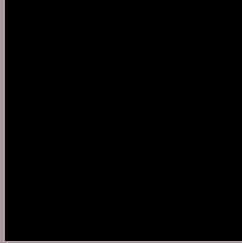
Any Text WCAG AA ✓ Pass

Large Text (above 18pt) WCAG AAA ✓ Pass

Any Text WCAG AAA ✓ Pass

If you want to check with other color combinations, try the [Color Contrast Checker](#).

Hex AC9BA1 Background



This preview shows how black text looks on a background with the Hex color AC9BA1.



This preview shows how white text looks on a background with the Hex color AC9BA1.

Color Blindness Simulation

Color vision deficiency is a very complex topic, and I could not describe the different causes any better than Wikipedia does, so if you want to learn more, you should check out their [article about color blindness](#).


Dichromacy



Original Color
AC9BA1

Protanopia
A19EA3

Deuteranopia
AE9AA1



Tritanopia
AD9AA6

Trichromacy



Original Color
AC9BA1

Protanomaly
A59DA2

Deuteranomaly
AD9AA1

Tritanomaly
AD9AA4

Monochromacy



Original Color
AC9BA1

Achromatopsia
A1A1A1

Achromatomaly
A59FA1

CSS Examples

Text

The CSS property to change the color of the text to Hex AC9BA1 is called "color". The color property can be set on classes, ids or directly on the HTML element.

This example shows how text in the color #AC9BA1 looks like.

```
.text, #text, p{  
    color:#AC9BA1  
}
```

If you want to add a text shadow in that color use the text-shadow property, you can generate a text shadow directly with our [CSS Text Shadow Generator](#).

Here you see how black text with a 4 pixel #AC9BA1 colored shadow looks like.

```
.shadow{ text-shadow: 4px 4px 2px #AC9BA1
}
```

Border

The CSS property to change the border of an element to Hex AC9BA1 is called "border". The border property can be set on classes, ids or directly on the HTML element.

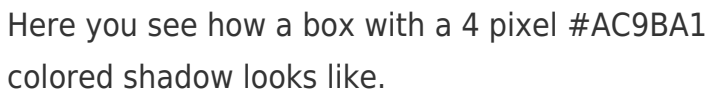
This example shows the color as border, it can be applied via the CSS property "border" or "border-color".

```
.border, #border, table{ border:4px solid
#AC9BA1 }
```

If only the border color should be changed use the property `border-color`.

```
.border{ border-color:#AC9BA1 }
```

If you want to add a box shadow in that color use:



Here you see how a box with a 4 pixel #AC9BA1 colored shadow looks like.

```
.boxshadow{ -moz-box-shadow:4px 4px 4px  
4px #AC9BA1; -webkit-box-shadow:4px 4px  
4px 4px #AC9BA1; box-shadow:4px 4px 4px  
4px #AC9BA1 }
```

Background

The CSS property to change the background color of an element to Hex AC9BA1 is called "background". The background property can be set on classes, ids or directly on the HTML element.

```
.background, #background, body{  
background:#AC9BA1 }
```

If only the background color should be changed can be used:

```
.background{ background-color:#AC9BA1 }
```

This example shows the color as background, it is applied via the CSS property "background".

To optimize and compress your CSS code, you can use our [online CSS compressor and optimizer](#) based on csstidy. If you want to create a linear or radial gradient as background or border, check our [CSS Gradient Generator](#).

Hey! You found this booklet interesting? Support Converting Colors with the new Membership Option!

The pro membership hides all ads, plus gives you double the colors in the color bucket, and more awesome pro features!

[Learn more, Memberships starting at \\$2.50/m!](#)

**Follow me
on Twitter!**

@ConvertingColor