

Converting Colors

Hex(ACBE57)

Have a look what the booklet for
Hex(ACBE57) contains.

Hex(ACBE57)	3
<i>Conversions</i>	4
<i>Details</i>	6
<i>Harmonies</i>	11
<i>Previews</i>	23
<i>Color Blindness Simulation</i>	26
<i>CSS Examples</i>	29

Color

Hex(ACBE57)

Conversions

Conversions Part 1

Format	Color
Hex	ACBE57
RGB	172, 190, 87
RGB Percent	67%, 75%, 34%
CMY	0.3255, 0.2549, 0.6588
CMYK	0.09, 0.00, 0.54, 0.25
HSL	70°, 44%, 54%
HSV	70°, 54%, 75%
XYZ	37.1470, 46.2857, 15.9930
YIQ	172.8760, 22.3350, -35.8490

Conversions

Conversions Part 2

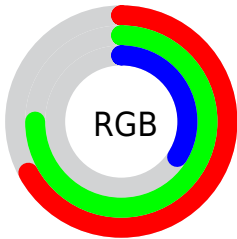
Format	Color
RYB	87, 190, 105
Decimal	11320919
CIELab	73.73, -21.20, 49.18
CIELCh	74, 53.559, 113.322
Yxy	46.2857, 0.3736, 0.4655
Android (android.graphics.Color)	4289510999 (0xFFACBE57)
YUV	172.8760, -42.3369, -0.7683
Hunter-Lab	68.0336, -21.5960, 33.6859

Details

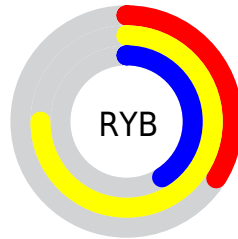
The Hex color **ACBE57** is a dark color, and the websafe version is hex **CCCC66**. A complement of this color would be **6957BE**, and the grayscale version is **ADADAD**.

A 20% lighter version of the original color is **E5F68C**, and **758923** is the 20% darker color. If you saturate the color by 10%, you get **A9BE44**, and if you desaturate by 10%, it is **AFBE6A**.

Distribution



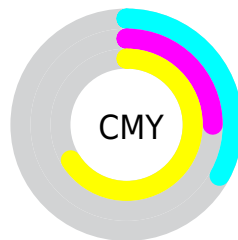
- Red (67%)
- Green (75%)
- Blue (34%)



- Red (34%)
- Yellow (75%)
- Blue (41%)



- Cyan (9%)
- Magenta (0%)
- Yellow (54%)
- Black (25%)



- Cyan (33%)
- Magenta (25%)
- Yellow (66%)

Brightness & Saturation Gradients

These gradients show how the Hex color ACBE57 changes by changing the brightness by 10 percent. The first figure shows a shift by +10% for each color and the second figure -10%.

Similar to the brightness gradients but the following saturation gradients show a change of the Hex color ACBE57 by changing the saturation by 10% instead.

 ACBE57

 ACBE57

FFFFFF

 90A33D

 E5F68C

 758923

 FFFFA7

 5B6F00

 FFFFC3

 415700

 FFFFDF

 283F00

 FFFFFC

 0E2900

 001500

 000000

 ACBE57

 ACBE57

 A9BE44

 AFBE6A

 A5BE31

 B3BE7D

 A2BE1E

 B6BE90

 9FBE0B

 B9BEA3

 9DBE00

 BDBEB6

 C0BEC9

 C3BEDC

 C7BEEF

 CABEFF

Harmonies

Analogous

The Analogous color harmony consists of three colors that are next to each other on the color wheel.



DCAF51



ACBE57



71C878

Triad

The Triadic color harmony groups three colors that are evenly spaced from another and form a triangle on the color wheel.



ACBE57



00C9FF



FF8DC2

Complementary

The Complementary color scheme is a pair of colors which are on the opposite of each other on the color wheel.



ACBE57



6957BE

Split Complementary

Split-complementary colors differ from the complementary color scheme. The scheme consists of three colors, the original color and two neighbors of the complement color.



E799F0



ACBE57



36BEFF

Square

The Square scheme is like the rectangle color scheme, but the four colors are evenly spaced on the color wheel.



ACBE57



00CEDB



A7ADFF



FF8E91

Rectangle

The Rectangle color scheme consists of four colors that form a rectangle on the color wheel.



ACBE57



35CC97



A7ADFF



FF8FD3

Sweetspot

The Sweet Spot groups the original color and five complimentary colors.



ACBE57



F0F7D0



BE6857



797D65



FCFCFC



7D7D7D

Same Dimension

The Same Dimension uses a secret algorithm to generate beautiful new colors.



ACBE57



DBF757



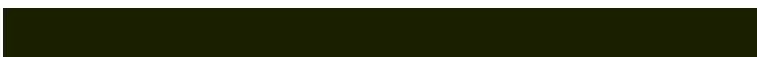
79BE57



5D5E55



829E00



191F00

Inverse Universe

The Inverse Universe completely reimagines the original color for something new.



6957BE



7357F7



9C57BE



57555E



1C009E



05001F

Previews

White Background



This preview shows how the Hex color ACBE57 looks on a white background.

Color Contrast Check

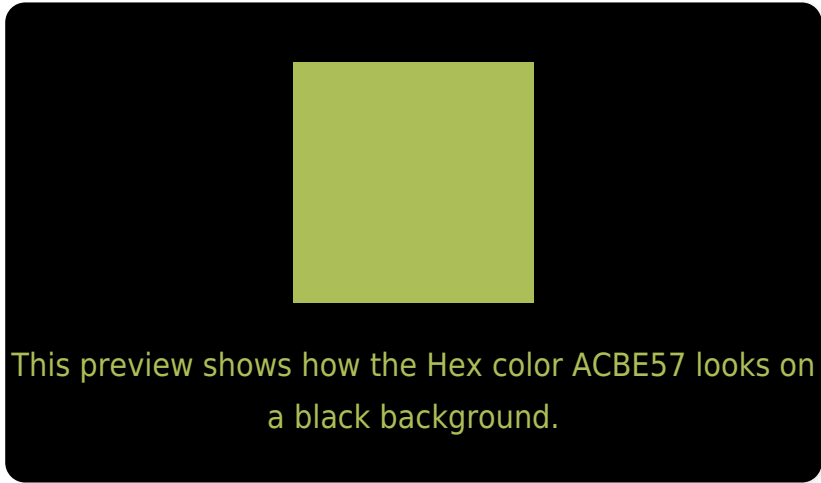
Large Text (above 18pt) WCAG AA × Fail

Any Text WCAG AA × Fail

Large Text (above 18pt) WCAG AAA × Fail

Any Text WCAG AAA × Fail

Black Background



Color Contrast Check

Large Text (above 18pt) WCAG AA ✓ Pass

Any Text WCAG AA ✓ Pass

Large Text (above 18pt) WCAG AAA ✓ Pass

Any Text WCAG AAA ✓ Pass

If you want to check with other color combinations, try the [Color Contrast Checker](#).

Hex ACBE57 Background



This preview shows how black text looks on a background with the Hex color ACBE57.

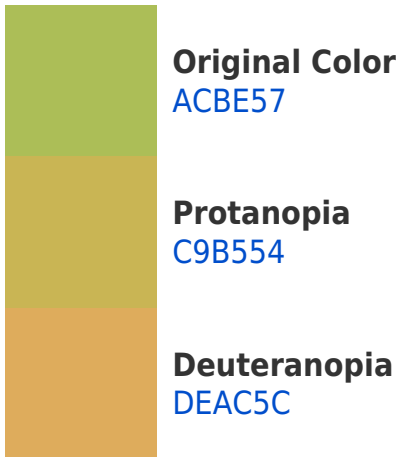


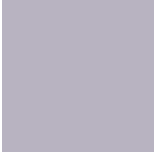
This preview shows how white text looks on a background with the Hex color ACBE57.

Color Blindness Simulation

Color vision deficiency is a very complex topic, and I could not describe the different causes any better than Wikipedia does, so if you want to learn more, you should check out their [article about color blindness](#).

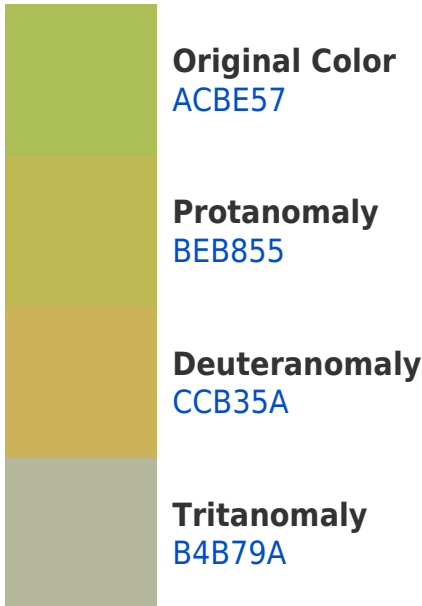
Dichromacy



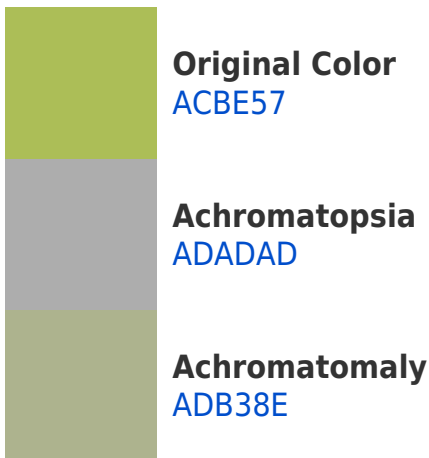


Tritanopia
B8B3C1

Trichromacy



Monochromacy



CSS Examples

Text

The CSS property to change the color of the text to Hex ACBE57 is called "color". The color property can be set on classes, ids or directly on the HTML element.

This example shows how text in the color #ACBE57 looks like.

```
.text, #text, p{  
    color:#ACBE57  
}
```

If you want to add a text shadow in that color use the text-shadow property, you can generate a text shadow directly with our [CSS Text Shadow Generator](#).

Here you see how black text with a 4 pixel #ACBE57 colored shadow looks like.

```
.shadow{ text-shadow: 4px 4px 2px #ACBE57
}
```

Border

The CSS property to change the border of an element to Hex ACBE57 is called "border". The border property can be set on classes, ids or directly on the HTML element.

This example shows the color as border, it can be applied via the CSS property "border" or "border-color".

```
.border, #border, table{ border:4px solid
#ACBE57 }
```

If only the border color should be changed use the property `border-color`.

```
.border{ border-color:#ACBE57 }
```

If you want to add a box shadow in that color use:

Here you see how a box with a 4 pixel #ACBE57 colored shadow looks like.

```
.boxshadow{ -moz-box-shadow:4px 4px 4px  
4px #ACBE57; -webkit-box-shadow:4px 4px  
4px 4px #ACBE57; box-shadow:4px 4px 4px  
4px #ACBE57 }
```

Background

The CSS property to change the background color of an element to Hex ACBE57 is called "background". The background property can be set on classes, ids or directly on the HTML element.

```
.background, #background, body{  
background:#ACBE57 }
```

If only the background color should be changed can be used:

```
.background{ background-color:#ACBE57 }
```

This example shows the color as background, it is applied via the CSS property "background".

To optimize and compress your CSS code, you can use our [online CSS compressor and optimizer](#) based on csstidy. If you want to create a linear or radial gradient as background or border, check our [CSS Gradient Generator](#).

Hey! You found this booklet interesting? Support Converting Colors with the new Membership Option!

The pro membership hides all ads, plus gives you double the colors in the color bucket, and more awesome pro features!

[Learn more, Memberships starting at \\$2.50/m!](#)

**Follow me
on Twitter!**

@ConvertingColor