

Converting Colors

Hex(AD713D)

Have a look what the booklet for
Hex(AD713D) contains.

Hex(AD713D)	3
<i>Conversions</i>	4
<i>Details</i>	6
<i>Harmonies</i>	11
<i>Previews</i>	23
<i>Color Blindness Simulation</i>	26
<i>CSS Examples</i>	29

Color

Hex(AD713D)

Conversions

Conversions Part 1

Format	Color
Hex	AD713D
RGB	173, 113, 61
RGB Percent	68%, 44%, 24%
CMY	0.3216, 0.5569, 0.7608
CMYK	0.00, 0.35, 0.65, 0.32
HSL	28°, 48%, 46%
HSV	28°, 65%, 68%
XYZ	23.9810, 21.0314, 7.2104
YIQ	125.0120, 52.4520, -3.4520

Conversions

Conversions Part 2

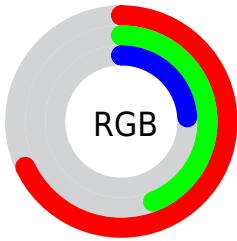
Format	Color
RYB	173, 158, 61
Decimal	11366717
CIELab	52.98, 18.60, 38.02
CIELCh	53, 42.329, 63.931
Yxy	21.0314, 0.4592, 0.4027
Android (android.graphics.Color)	4289556797 (0xFFAD713D)
YUV	125.0120, -31.5579, 42.0855
Hunter-Lab	45.8600, 13.0858, 22.7801

Details

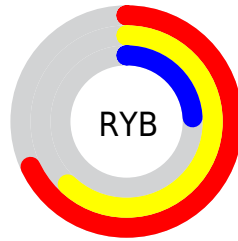
The Hex color **AD713D** is a dark color, and the websafe version is hex **996633**. A complement of this color would be **3D79AD**, and the grayscale version is **7D7D7D**.

A 20% lighter version of the original color is **E8A56E**, and **74410D** is the 20% darker color. If you saturate the color by 10%, you get **AD682C**, and if you desaturate by 10%, it is **AD7A4E**.

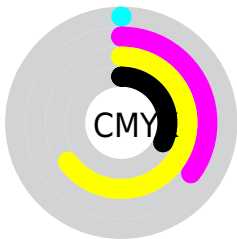
Distribution



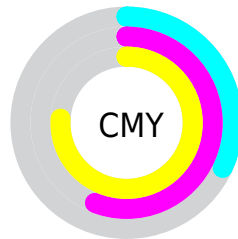
- Red (68%)
- Green (44%)
- Blue (24%)



- Red (68%)
- Yellow (62%)
- Blue (24%)



- Cyan (0%)
- Magenta (35%)
- Yellow (65%)
- Black (32%)



- Cyan (32%)
- Magenta (56%)
- Yellow (76%)

Brightness & Saturation Gradients

These gradients show how the Hex color AD713D changes by changing the brightness by 10 percent. The first figure shows a shift by +10% for each color and the second figure -10%.

Similar to the brightness gradients but the following saturation gradients show a change of the Hex color AD713D by changing the saturation by 10% instead.

 AD713D

 AD713D

FFFFFF

 905825

 E8A56E

 74410D

 FFC088

 5A2A00

 FFDC A3

 3E1500

 FFF9BE

 260000

 FFFFDA

 000000

 FFFFF7

 AD713D

 AD713D

 AD682C

 AD7A4E

■ AD5E1A

■ AD8460

■ AD5509

■ AD8D71

■ AD5000

■ AD9682

■ AD9F93

■ ADA9A5

■ ADB2B6

■ ADBBC7

■ ADC4D9

Harmonies

Analogous

The Analogous color harmony consists of three colors that are next to each other on the color wheel.



BF6458



AD713D



8F7E33

Triad

The Triadic color harmony groups three colors that are evenly spaced from another and form a triangle on the color wheel.



AD713D



009182



8773BB

Complementary

The Complementary color scheme is a pair of colors which are on the opposite of each other on the color wheel.



AD713D



3D79AD

Split Complementary

Split-complementary colors differ from the complementary color scheme. The scheme consists of three colors, the original color and two neighbors of the complement color.



4581C7



AD713D



0090A6

Square

The Square scheme is like the rectangle color scheme, but the four colors are evenly spaced on the color wheel.



AD713D



378E5D



008BBF



AF659F

Rectangle

The Rectangle color scheme consists of four colors that form a rectangle on the color wheel.



AD713D



778539



008BBF



7578C1

Sweetspot

The Sweet Spot groups the original color and five complimentary colors.



AD713D



E0CAB6



AD3D7B



706256



F0F0F0



707070

Same Dimension

The Same Dimension uses a secret algorithm to generate beautiful new colors.



AD713D



E08331



ADA73D



57524E



964600



170B00

Inverse Universe

The Inverse Universe completely reimagines the original color for something new.



3D79AD



318FE0



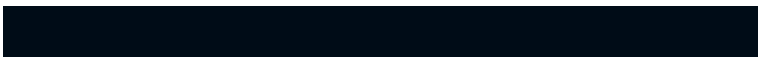
3D43AD



4E5357



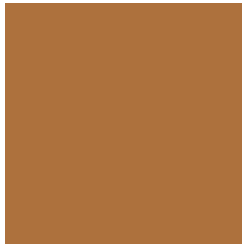
005196



000C17

Previews

White Background



This preview shows how the Hex color AD713D looks on a white background.

Color Contrast Check

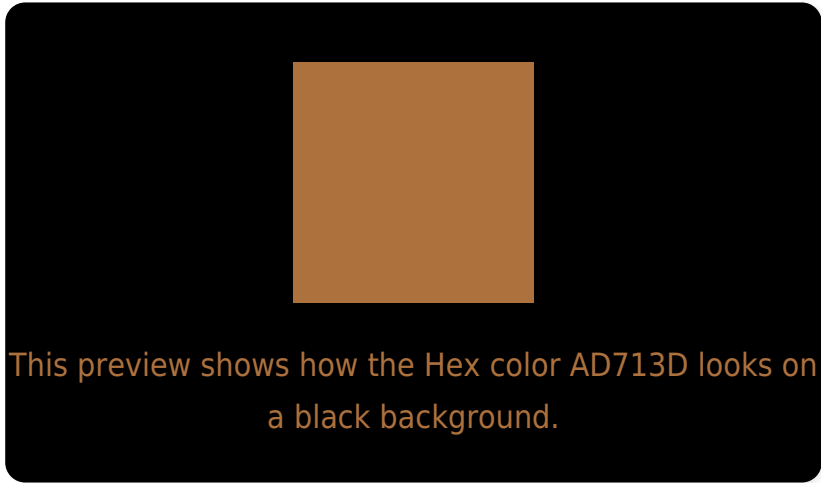
Large Text (above 18pt) WCAG AA ✓ Pass

Any Text WCAG AA × Fail

Large Text (above 18pt) WCAG AAA × Fail

Any Text WCAG AAA × Fail

Black Background



Color Contrast Check

Large Text (above 18pt) WCAG AA ✓ Pass

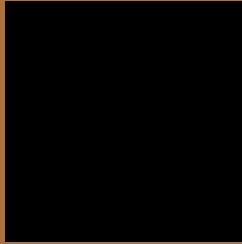
Any Text WCAG AA ✓ Pass

Large Text (above 18pt) WCAG AAA ✓ Pass

Any Text WCAG AAA × Fail

If you want to check with other color combinations, try the [Color Contrast Checker](#).

Hex AD713D Background



This preview shows how black text looks on a background with the Hex color AD713D.



This preview shows how white text looks on a background with the Hex color AD713D.

Color Blindness Simulation

Color vision deficiency is a very complex topic, and I could not describe the different causes any better than Wikipedia does, so if you want to learn more, you should check out their [article about color blindness](#).


Dichromacy



Original Color
AD713D

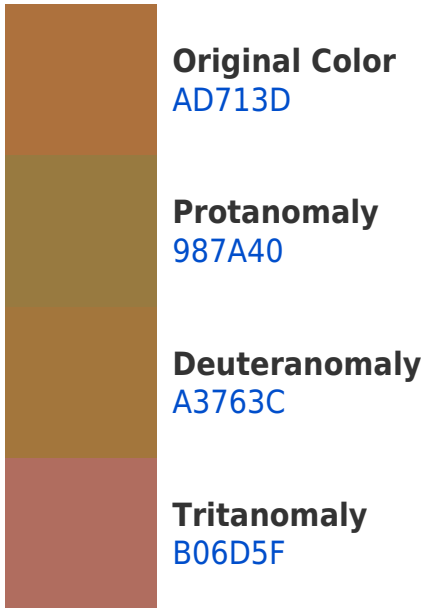
Protanopia
8C7F42

Deuteranopia
9D793B



Tritanopia
B16B73

Trichromacy



Monochromacy



CSS Examples

Text

The CSS property to change the color of the text to Hex AD713D is called "color". The color property can be set on classes, ids or directly on the HTML element.

This example shows how text in the color #AD713D looks like.

```
.text, #text, p{  
    color:#AD713D  
}
```

If you want to add a text shadow in that color use the text-shadow property, you can generate a text shadow directly with our [CSS Text Shadow Generator](#).

Here you see how black text with a 4 pixel #AD713D colored shadow looks like.

```
.shadow{ text-shadow: 4px 4px 2px #AD713D
}
```

Border

The CSS property to change the border of an element to Hex AD713D is called "border". The border property can be set on classes, ids or directly on the HTML element.

This example shows the color as border, it can be applied via the CSS property "border" or "border-color".

```
.border, #border, table{ border:4px solid
#AD713D }
```

If only the border color should be changed use the property border-color.

```
.border{ border-color:#AD713D }
```

If you want to add a box shadow in that color use:

Here you see how a box with a 4 pixel #AD713D colored shadow looks like.

```
.boxshadow{ -moz-box-shadow:4px 4px 4px  
4px #AD713D; -webkit-box-shadow:4px 4px  
4px 4px #AD713D; box-shadow:4px 4px 4px  
4px #AD713D }
```

Background

The CSS property to change the background color of an element to Hex AD713D is called "background". The background property can be set on classes, ids or directly on the HTML element.

```
.background, #background, body{  
background:#AD713D }
```

If only the background color should be changed can be used:

```
.background{ background-color:#AD713D }
```

This example shows the color as background, it is applied via the CSS property "background".

To optimize and compress your CSS code, you can use our [online CSS compressor and optimizer](#) based on csstidy. If you want to create a linear or radial gradient as background or border, check our [CSS Gradient Generator](#).

Hey! You found this booklet interesting? Support Converting Colors with the new Membership Option!

The pro membership hides all ads, plus gives you double the colors in the color bucket, and more awesome pro features!

[Learn more, Memberships starting at \\$2.50/m!](#)

**Follow me
on Twitter!**

@ConvertingColor