

Converting Colors

Hex(AD7D4E)

Have a look what the booklet for
Hex(AD7D4E) contains.

Hex(AD7D4E)	3
<i>Conversions</i>	4
<i>Details</i>	6
<i>Harmonies</i>	11
<i>Previews</i>	23
<i>Color Blindness Simulation</i>	26
<i>CSS Examples</i>	29

Color

Hex(AD7D4E)

Conversions

Conversions Part 1

Format	Color
Hex	AD7D4E
RGB	173, 125, 78
RGB Percent	68%, 49%, 31%
CMY	0.3216, 0.5098, 0.6941
CMYK	0.00, 0.28, 0.55, 0.32
HSL	30°, 38%, 49%
HSV	30°, 55%, 68%
XYZ	25.9423, 24.1015, 10.4925
YIQ	133.9940, 43.6950, -4.4410

Conversions

Conversions Part 2

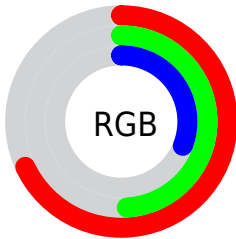
Format	Color
R_{YB}	173, 171, 78
Decimal	11369806
CIE _{Lab}	56.19, 13.17, 32.77
CIE _{LCh}	56, 35.320, 68.100
Yxy	24.1015, 0.4285, 0.3981
Android (android.graphics.Color)	4289559886 (0xFFAD7D4E)
YUV	133.9940, -27.6050, 34.2083
Hunter-Lab	49.0933, 8.4113, 21.6935

Details

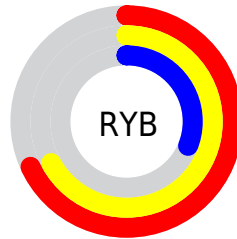
The Hex color **AD7D4E** is a dark color, and the websafe version is hex **996633**. A complement of this color would be **4E7EAD**, and the grayscale version is **868686**.

A 20% lighter version of the original color is **E7B280**, and **764C20** is the 20% darker color. If you saturate the color by 10%, you get **AD743D**, and if you desaturate by 10%, it is **AD865F**.

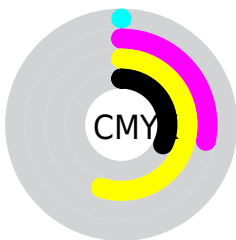
Distribution



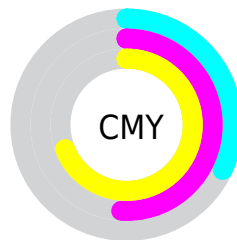
- Red (68%)
- Green (49%)
- Blue (31%)



- Red (68%)
- Yellow (67%)
- Blue (31%)



- Cyan (0%)
- Magenta (28%)
- Yellow (55%)
- Black (32%)



- Cyan (32%)
- Magenta (51%)
- Yellow (69%)

Brightness & Saturation Gradients


These gradients show how the Hex color AD7D4E changes by changing the brightness by 10 percent. The first figure shows a shift by +10% for each color and the second figure -10%.

Similar to the brightness gradients but the following saturation gradients show a change of the Hex color AD7D4E by changing the saturation by 10% instead.

 AD7D4E

 AD7D4E

FFFFFF

 916436

 E7B280

 764C20

 FFCD9A

 5B3508

 FFE9B5

 412000

 FFFFD1

 280B00

 FFFFEE

 000000

 AD7D4E

 AD7D4E

 AD743D

 AD865F

 AD6C2B

 AD8E71

 AD631A

 AD9782

 AD5A09

 ADA093

 AD5600

 ADA9A5

 ADB1B6

 ADBAC7

 ADC3D8

 ADCCEA

Harmonies

Analogous

The Analogous color harmony consists of three colors that are next to each other on the color wheel.



BE7362



AD7D4E



928849

Triad

The Triadic color harmony groups three colors that are evenly spaced from another and form a triangle on the color wheel.



AD7D4E



05978E



957CB7

Complementary

The Complementary color scheme is a pair of colors which are on the opposite of each other on the color wheel.



AD7D4E



4E7EAD

Split Complementary

Split-complementary colors differ from the complementary color scheme. The scheme consists of three colors, the original color and two neighbors of the complement color.



6687C3



AD7D4E



0095AC

Square

The Square scheme is like the rectangle color scheme, but the four colors are evenly spaced on the color wheel.



AD7D4E



4A956F



2490BF



B4729E

Rectangle

The Rectangle color scheme consists of four colors that form a rectangle on the color wheel.



AD7D4E



7D8E4F



2490BF



877FBD

Sweetspot

The Sweet Spot groups the original color and five complimentary colors.



AD7D4E



E0CEBC



AD4E7F



70655B



F0F0F0



707070

Same Dimension

The Same Dimension uses a secret algorithm to generate beautiful new colors.



AD7D4E



E0964C



ADAB4E



57524E



964A00



170B00

Inverse Universe

The Inverse Universe completely reimagines the original color for something new.



4E7EAD



4C97E0



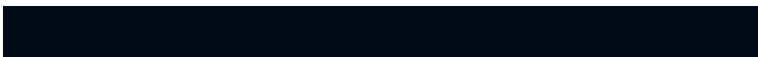
4E50AD



4E5257



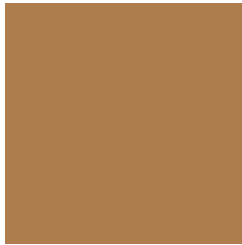
004C96



000C17

Previews

White Background



This preview shows how the Hex color AD7D4E looks on a white background.

Color Contrast Check

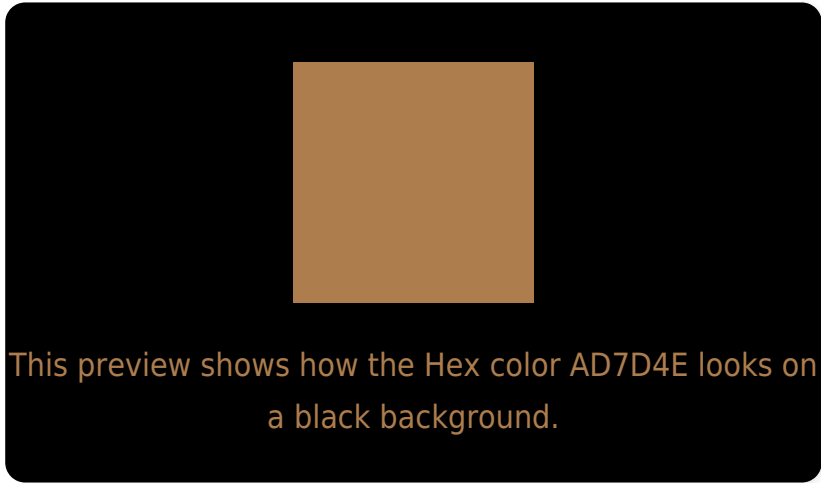
Large Text (above 18pt) WCAG AA ✓ Pass

Any Text WCAG AA × Fail

Large Text (above 18pt) WCAG AAA × Fail

Any Text WCAG AAA × Fail

Black Background



Color Contrast Check

Large Text (above 18pt) WCAG AA ✓ Pass

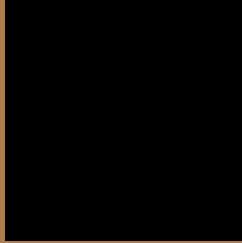
Any Text WCAG AA ✓ Pass

Large Text (above 18pt) WCAG AAA ✓ Pass

Any Text WCAG AAA × Fail

If you want to check with other color combinations, try the [Color Contrast Checker](#).

Hex AD7D4E Background



This preview shows how black text looks on a background with the Hex color AD7D4E.



This preview shows how white text looks on a background with the Hex color AD7D4E.

Color Blindness Simulation

Color vision deficiency is a very complex topic, and I could not describe the different causes any better than Wikipedia does, so if you want to learn more, you should check out their [article about color blindness](#).

Dichromacy



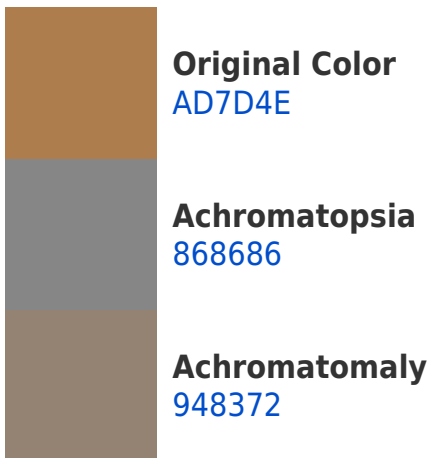


Tritanopia
B17780

Trichromacy



Monochromacy



CSS Examples

Text

The CSS property to change the color of the text to Hex AD7D4E is called "color". The color property can be set on classes, ids or directly on the HTML element.

This example shows how text in the color #AD7D4E looks like.

```
.text, #text, p{  
    color:#AD7D4E  
}
```

If you want to add a text shadow in that color use the text-shadow property, you can generate a text shadow directly with our [CSS Text Shadow Generator](#).

Here you see how black text with a 4 pixel #AD7D4E colored shadow looks like.

```
.shadow{ text-shadow: 4px 4px 2px #AD7D4E
}
```

Border

The CSS property to change the border of an element to Hex AD7D4E is called "border". The border property can be set on classes, ids or directly on the HTML element.

This example shows the color as border, it can be applied via the CSS property "border" or "border-color".

```
.border, #border, table{ border:4px solid
#AD7D4E }
```

If only the border color should be changed use the property `border-color`.

```
.border{ border-color:#AD7D4E }
```

If you want to add a box shadow in that color use:

Here you see how a box with a 4 pixel #AD7D4E colored shadow looks like.

```
.boxshadow{ -moz-box-shadow:4px 4px 4px  
4px #AD7D4E; -webkit-box-shadow:4px 4px  
4px 4px #AD7D4E; box-shadow:4px 4px 4px  
4px #AD7D4E }
```

Background

The CSS property to change the background color of an element to Hex AD7D4E is called "background". The background property can be set on classes, ids or directly on the HTML element.

```
.background, #background, body{  
background:#AD7D4E }
```

If only the background color should be changed can be used:

```
.background{ background-color:#AD7D4E }
```

This example shows the color as background, it is applied via the CSS property "background".

To optimize and compress your CSS code, you can use our [online CSS compressor and optimizer](#) based on csstidy. If you want to create a linear or radial gradient as background or border, check our [CSS Gradient Generator](#).

Hey! You found this booklet interesting? Support Converting Colors with the new Membership Option!

The pro membership hides all ads, plus gives you double the colors in the color bucket, and more awesome pro features!

[Learn more, Memberships starting at \\$2.50/m!](#)

**Follow me
on Twitter!**

@ConvertingColor