

Converting Colors

Hex(AD7D5C)

Have a look what the booklet for
Hex(AD7D5C) contains.

Hex(AD7D5C)	3
<i>Conversions</i>	4
<i>Details</i>	6
<i>Harmonies</i>	11
<i>Previews</i>	23
<i>Color Blindness Simulation</i>	26
<i>CSS Examples</i>	29

Color

Hex(AD7D5C)

Conversions

Conversions Part 1

Format	Color
Hex	AD7D5C
RGB	173, 125, 92
RGB Percent	68%, 49%, 36%
CMY	0.3216, 0.5098, 0.6392
CMYK	0.00, 0.28, 0.47, 0.32
HSL	24°, 33%, 52%
HSV	24°, 47%, 68%
XYZ	26.4990, 24.3242, 13.4236
YIQ	135.5900, 39.2010, -0.0870

Conversions

Conversions Part 2

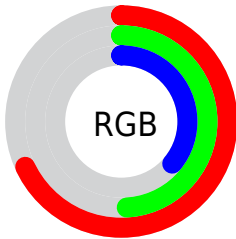
Format	Color
RYB	173, 148, 92
Decimal	11369820
CIELab	56.41, 14.52, 25.31
CIELCh	56, 29.177, 60.150
Yxy	24.3242, 0.4125, 0.3786
Android (android.graphics.Color)	4289559900 (0xFFAD7D5C)
YUV	135.5900, -21.4899, 32.8086
Hunter-Lab	49.3195, 9.5973, 18.3864

Details

The Hex color **AD7D5C** is a dark color, and the websafe version is hex **CC9966**. A complement of this color would be **5C8CAD**, and the grayscale version is **888888**.

A 20% lighter version of the original color is **E6B28F**, and **764C2D** is the 20% darker color. If you saturate the color by 10%, you get **AD734B**, and if you desaturate by 10%, it is **AD876D**.

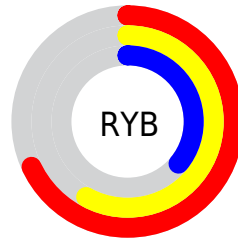
Distribution



Red (68%)

Green (49%)

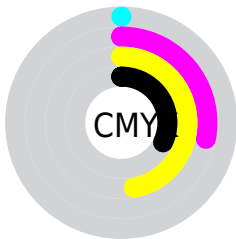
Blue (36%)



Red (68%)

Yellow (58%)

Blue (36%)

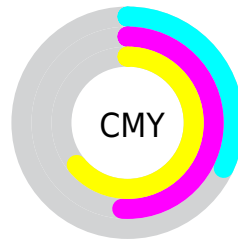


Cyan (0%)

Magenta (28%)

Yellow (47%)

Black (32%)



Cyan (32%)

Magenta (51%)

Yellow (64%)

Brightness & Saturation Gradients

These gradients show how the Hex color AD7D5C changes by changing the brightness by 10 percent. The first figure shows a shift by +10% for each color and the second figure -10%.

Similar to the brightness gradients but the following saturation gradients show a change of the Hex color AD7D5C by changing the saturation by 10% instead.

 AD7D5C

 AD7D5C

FFFFFF

 916444

 E6B28F

 764C2D

 FFCDA9

 5C3518

 FFE9C5

 431F00

 FFFFE1

 2A0B00

FFFFFFD

 000000

 AD7D5C

 AD7D5C

 AD734B

 AD876D

 AD6839

 AD927F

 AD5E28

 AD9C90

 AD5417

 ADA6A1

 AD4A05

 ADB0B3

 AD4600

 ADBBC4

 ADC5D5

 ADCFE6

 ADD9F8

Harmonies

Analogous

The Analogous color harmony consists of three colors that are next to each other on the color wheel.



B8766F



AD7D5C



988654

Triad

The Triadic color harmony groups three colors that are evenly spaced from another and form a triangle on the color wheel.



AD7D5C



409587



8B81B3

Complementary

The Complementary color scheme is a pair of colors which are on the opposite of each other on the color wheel.



AD7D5C



5C8CAD

Split Complementary

Split-complementary colors differ from the complementary color scheme. The scheme consists of three colors, the original color and two neighbors of the complement color.



648ABA



AD7D5C



2B94A0

Square

The Square scheme is like the rectangle color scheme, but the four colors are evenly spaced on the color wheel.



AD7D5C



60936D



3C91B3



A878A1

Rectangle

The Rectangle color scheme consists of four colors that form a rectangle on the color wheel.



AD7D5C



878B57



3C91B3



7F84B7

Sweetspot

The Sweet Spot groups the original color and five complimentary colors.



AD7D5C



E0CEC1



AD5C8D



70655D



F0F0F0



707070

Same Dimension

The Same Dimension uses a secret algorithm to generate beautiful new colors.



AD7D5C



E09663



ADA55C



57524E



963D00



170900

Inverse Universe

The Inverse Universe completely reimagines the original color for something new.



5C8CAD



63ADE0



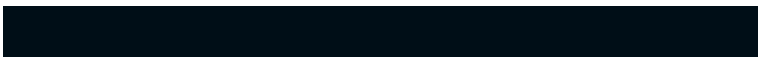
5C64AD



4E5357



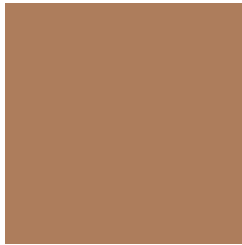
005996



000E17

Previews

White Background



This preview shows how the Hex color AD7D5C looks on a white background.

Color Contrast Check

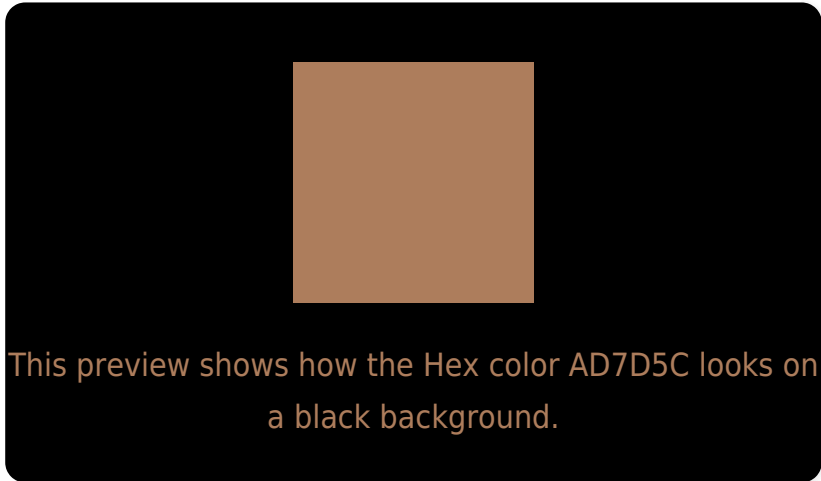
Large Text (above 18pt) WCAG AA ✓ Pass

Any Text WCAG AA × Fail

Large Text (above 18pt) WCAG AAA × Fail

Any Text WCAG AAA × Fail

Black Background



Color Contrast Check

Large Text (above 18pt) WCAG AA ✓ Pass

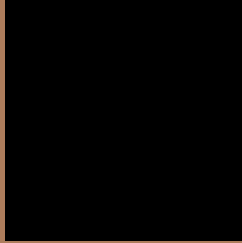
Any Text WCAG AA ✓ Pass

Large Text (above 18pt) WCAG AAA ✓ Pass

Any Text WCAG AAA × Fail

If you want to check with other color combinations, try the [Color Contrast Checker](#).

Hex AD7D5C Background



This preview shows how black text looks on a background with the Hex color AD7D5C.



This preview shows how white text looks on a background with the Hex color AD7D5C.

Color Blindness Simulation

Color vision deficiency is a very complex topic, and I could not describe the different causes any better than Wikipedia does, so if you want to learn more, you should check out their [article about color blindness](#).

Dichromacy



Original Color
AD7D5C

Protanopia
928760

Deuteranopia
A2825B



Tritanopia
B07881

Trichromacy



Original Color
AD7D5C

Protanomaly
9C835F

Deuteranomaly
A6805B

Tritanomaly
AF7A74

Monochromacy



Original Color
AD7D5C

Achromatopsia
888888

Achromatomaly
958478

CSS Examples

Text

The CSS property to change the color of the text to Hex AD7D5C is called "color". The color property can be set on classes, ids or directly on the HTML element.

This example shows how text in the color #AD7D5C looks like.

```
.text, #text, p{  
    color:#AD7D5C  
}
```

If you want to add a text shadow in that color use the text-shadow property, you can generate a text shadow directly with our [CSS Text Shadow Generator](#).

Here you see how black text with a 4 pixel #AD7D5C colored shadow looks like.

```
.shadow{ text-shadow: 4px 4px 2px #AD7D5C  
}
```

Border

The CSS property to change the border of an element to Hex AD7D5C is called "border". The border property can be set on classes, ids or directly on the HTML element.

This example shows the color as border, it can be applied via the CSS property "border" or "border-color".

```
.border, #border, table{ border:4px solid  
#AD7D5C }
```

If only the border color should be changed use the property `border-color`.

```
.border{ border-color:#AD7D5C }
```

If you want to add a box shadow in that color use:

Here you see how a box with a 4 pixel #AD7D5C colored shadow looks like.

```
.boxshadow{ -moz-box-shadow:4px 4px 4px  
4px #AD7D5C; -webkit-box-shadow:4px 4px  
4px 4px #AD7D5C; box-shadow:4px 4px 4px  
4px #AD7D5C }
```

Background

The CSS property to change the background color of an element to Hex AD7D5C is called "background". The background property can be set on classes, ids or directly on the HTML element.

```
.background, #background, body{  
background:#AD7D5C }
```

If only the background color should be changed can be used:

```
.background{ background-color:#AD7D5C }
```

This example shows the color as background, it is applied via the CSS property "background".

To optimize and compress your CSS code, you can use our [online CSS compressor and optimizer](#) based on csstidy. If you want to create a linear or radial gradient as background or border, check our [CSS Gradient Generator](#).

Hey! You found this booklet interesting? Support Converting Colors with the new Membership Option!

The pro membership hides all ads, plus gives you double the colors in the color bucket, and more awesome pro features!

[Learn more, Memberships starting at \\$2.50/m!](#)

**Follow me
on Twitter!**

@ConvertingColor