

Converting Colors

Hex(AD8356)

Have a look what the booklet for
Hex(AD8356) contains.

Hex(AD8356)	3
<i>Conversions</i>	4
<i>Details</i>	6
<i>Harmonies</i>	11
<i>Previews</i>	23
<i>Color Blindness Simulation</i>	26
<i>CSS Examples</i>	29

Color

Hex(AD8356)

Conversions

Conversions Part 1

Format	Color
Hex	AD8356
RGB	173, 131, 86
RGB Percent	68%, 51%, 34%
CMY	0.3216, 0.4863, 0.6627
CMYK	0.00, 0.24, 0.50, 0.32
HSL	31°, 35%, 51%
HSV	31°, 50%, 68%
XYZ	27.0296, 25.7887, 12.3572
YIQ	138.4280, 39.4770, -5.0910

Conversions

Conversions Part 2

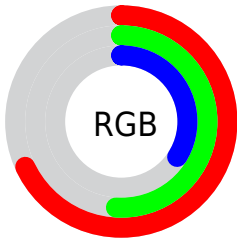
Format	Color
RYB	167, 173, 86
Decimal	11371350
CIELab	57.84, 10.55, 30.47
CIELCh	58, 32.245, 70.911
Yxy	25.7887, 0.4147, 0.3957
Android (android.graphics.Color)	4289561430 (0xFFAD8356)
YUV	138.4280, -25.8470, 30.3196
Hunter-Lab	50.7826, 6.1390, 21.1205

Details

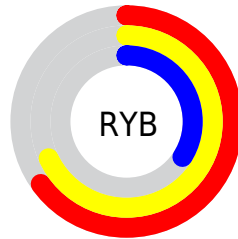
The Hex color **AD8356** is a dark color, and the websafe version is hex **CC9966**. A complement of this color would be **5680AD**, and the grayscale version is **8B8B8B**.

A 20% lighter version of the original color is **E6B888**, and **765227** is the 20% darker color. If you saturate the color by 10%, you get **AD7B45**, and if you desaturate by 10%, it is **AD8B67**.

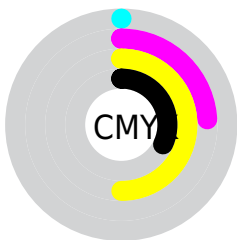
Distribution



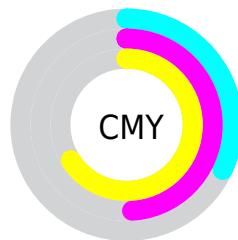
- Red (68%)
- Green (51%)
- Blue (34%)



- Red (65%)
- Yellow (68%)
- Blue (34%)



- Cyan (0%)
- Magenta (24%)
- Yellow (50%)
- Black (32%)



- Cyan (32%)
- Magenta (49%)
- Yellow (66%)

Brightness & Saturation Gradients

These gradients show how the Hex color AD8356 changes by changing the brightness by 10 percent. The first figure shows a shift by +10% for each color and the second figure -10%.

Similar to the brightness gradients but the following saturation gradients show a change of the Hex color AD8356 by changing the saturation by 10% instead.

 AD8356

 AD8356

FFFFFF

 916A3E

 E6B888

 765227

 FFD4A3

 5C3B11

 FFF0BE

 432500

 FFFFDA

 291100

 FFFFF7

 030000

 000000

 AD8356

 AD8356

 AD7B45

 AD8B67

 AD7233

 AD9479

 AD6A22

 AD9C8A

 AD6211

 ADA49B

 AD5900

 ADADAD

 ADB5BE

 ADBDCF

 ADC6E0

 ADCEF2

Harmonies

Analogous

The Analogous color harmony consists of three colors that are next to each other on the color wheel.



BE7A67



AD8356



938D53

Triad

The Triadic color harmony groups three colors that are evenly spaced from another and form a triangle on the color wheel.



AD8356



299A95



9B80B6

Complementary

The Complementary color scheme is a pair of colors which are on the opposite of each other on the color wheel.



AD8356



5680AD

Split Complementary

Split-complementary colors differ from the complementary color scheme. The scheme consists of three colors, the original color and two neighbors of the complement color.



738AC2



AD8356



1498AF

Square

The Square scheme is like the rectangle color scheme, but the four colors are evenly spaced on the color wheel.



AD8356



519978



4293C0



B7779E

Rectangle

The Rectangle color scheme consists of four colors that form a rectangle on the color wheel.



AD8356



7F925A



4293C0



8F83BB

Sweetspot

The Sweet Spot groups the original color and five complimentary colors.



AD8356



E0D0BF



AD5680



70665C



F0F0F0



707070

Same Dimension

The Same Dimension uses a secret algorithm to generate beautiful new colors.



AD8356



E09F5A



ACAD56



57534E



964E00



170C00

Inverse Universe

The Inverse Universe completely reimagines the original color for something new.



5680AD



5A9BE0



5756AD



4E5257



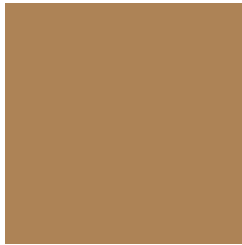
004996



000B17

Previews

White Background



This preview shows how the Hex color AD8356 looks on a white background.

Color Contrast Check

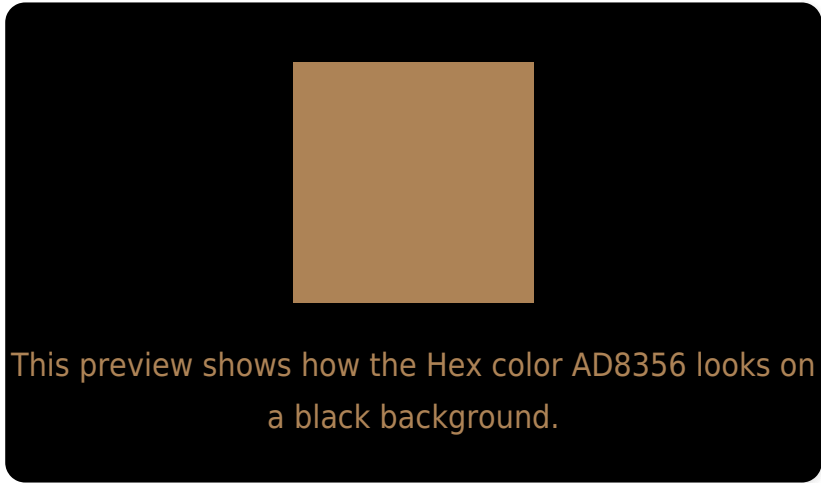
Large Text (above 18pt) WCAG AA ✓ Pass

Any Text WCAG AA × Fail

Large Text (above 18pt) WCAG AAA × Fail

Any Text WCAG AAA × Fail

Black Background



Color Contrast Check

Large Text (above 18pt) WCAG AA ✓ Pass

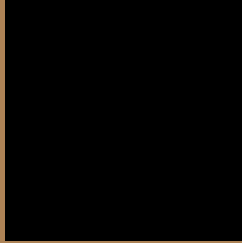
Any Text WCAG AA ✓ Pass

Large Text (above 18pt) WCAG AAA ✓ Pass

Any Text WCAG AAA × Fail

If you want to check with other color combinations, try the [Color Contrast Checker](#).

Hex AD8356 Background



This preview shows how black text looks on a background with the Hex color AD8356.



This preview shows how white text looks on a background with the Hex color AD8356.

Color Blindness Simulation

Color vision deficiency is a very complex topic, and I could not describe the different causes any better than Wikipedia does, so if you want to learn more, you should check out their [article about color blindness](#).


Dichromacy



Original Color
AD8356

Protanopia
988B59

Deuteranopia
A88556

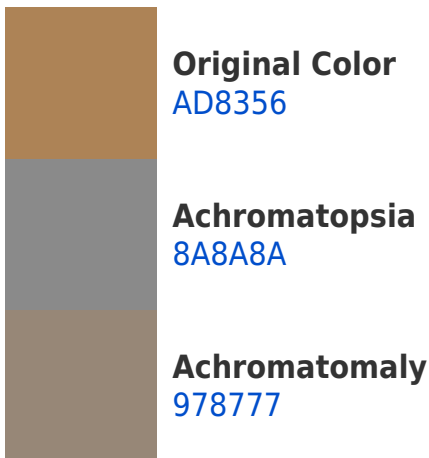


Tritanopia
B17D87

Trichromacy



Monochromacy



CSS Examples

Text

The CSS property to change the color of the text to Hex AD8356 is called "color". The color property can be set on classes, ids or directly on the HTML element.

This example shows how text in the color #AD8356 looks like.

```
.text, #text, p{  
    color:#AD8356  
}
```

If you want to add a text shadow in that color use the text-shadow property, you can generate a text shadow directly with our [CSS Text Shadow Generator](#).

Here you see how black text with a 4 pixel #AD8356 colored shadow looks like.

```
.shadow{ text-shadow: 4px 4px 2px #AD8356
}
```

Border

The CSS property to change the border of an element to Hex AD8356 is called "border". The border property can be set on classes, ids or directly on the HTML element.

This example shows the color as border, it can be applied via the CSS property "border" or "border-color".

```
.border, #border, table{ border:4px solid
#AD8356 }
```

If only the border color should be changed use the property `border-color`.

```
.border{ border-color:#AD8356 }
```

If you want to add a box shadow in that color use:

Here you see how a box with a 4 pixel #AD8356 colored shadow looks like.

```
.boxshadow{ -moz-box-shadow:4px 4px 4px  
4px #AD8356; -webkit-box-shadow:4px 4px  
4px 4px #AD8356; box-shadow:4px 4px 4px  
4px #AD8356 }
```

Background

The CSS property to change the background color of an element to Hex AD8356 is called "background". The background property can be set on classes, ids or directly on the HTML element.

```
.background, #background, body{  
background:#AD8356 }
```

If only the background color should be changed can be used:

```
.background{ background-color:#AD8356 }
```

This example shows the color as background, it is applied via the CSS property "background".

To optimize and compress your CSS code, you can use our [online CSS compressor and optimizer](#) based on csstidy. If you want to create a linear or radial gradient as background or border, check our [CSS Gradient Generator](#).

Hey! You found this booklet interesting? Support Converting Colors with the new Membership Option!

The pro membership hides all ads, plus gives you double the colors in the color bucket, and more awesome pro features!

[Learn more, Memberships starting at \\$2.50/m!](#)

**Follow me
on Twitter!**

@ConvertingColor